



*Free Spirit* 

## Splendor Patchwork Pillow

Featuring Splendor by Amy Butler

**Collection:** Splendor by Amy Butler

**Technique:** Piecing

**Skill Level:** Advanced Beginner

**Crafting Time:** Evening\*

**Finished Size:** 18", 20", 22" or 24" square

*\*Crafting time based on Advanced Beginner skill level*

## Materials List (makes 1 pillow)

**Note:** Allow extra yardage for matching or centering a design on your fabric.

	Fabrics Required	Pillow Size	Yardage Required
<b>Splendor Patchwork Pillow 44" wide Quilting Cotton</b>	Five coordinating prints and solids for the patchwork piecing on the Pillow Front	18" or 20" square	$\frac{3}{8}$ yard of each fabric
		22" or 24" square	$\frac{1}{2}$ yard of each fabric
	One coordinating print for the Pillow Back	18" square	$\frac{5}{8}$ yard
		20", 22" or 24" square	$\frac{3}{4}$ yard
	Cotton muslin for foundation piecing	18" square	$\frac{3}{8}$ yard
		20", 22" or 24" square	$\frac{3}{4}$ yard

## Tools Needed

- Scissors
- Seam ripper
- Rotary cutter, mat & ruler
- Straight pins
- 1 spool of coordinating all-purpose thread
- Iron, ironing board and pressing cloth
- Fabric marking pen/pencil
- 18", 20", 22" or 24" pillow form – (I use Soft n Crafty® by Fairfield®)

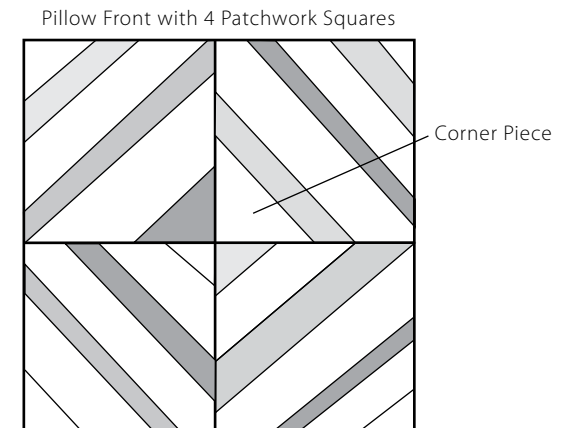
## Step 1

### Cut out all your fabric pieces

#### Pillow Front

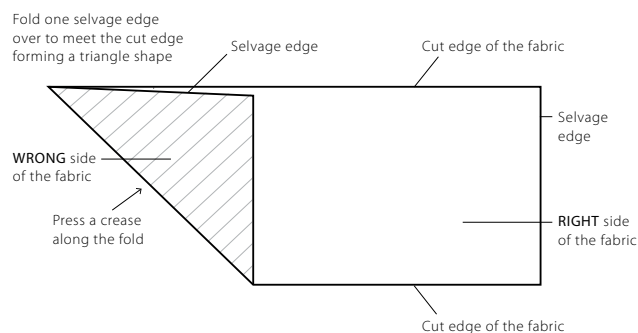
**Note:** The Splendor Patchwork Pillow Front is made up of 4 squares of bias strips cut in different sizes and then sewn together in a random order. Each square has a corner piece that will be placed in the center of the Pillow Front to form a center focal point. Select 4 of the 5 prints to be used as your corner pieces.

**Fig. 1**



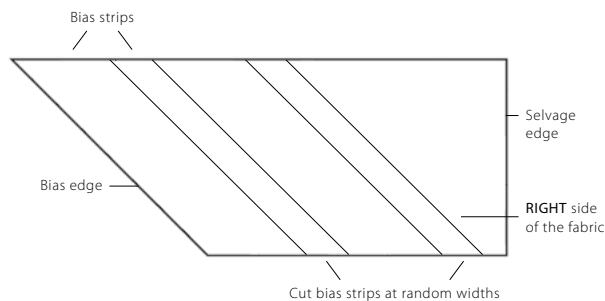
- A.** Place the first fabric on your rotary mat with the RIGHT side facing up. Fold one selvage\* edge over to meet the cut edge forming a triangle, and press\* a crease along the fold. Open the fabric and cut along the crease. Set the remaining triangle piece aside to use as a corner piece

Fig. 2



- B.** Starting at one end of the bias\* edge and using your ruler and rotary cutter, start to measure and cut 6-8 bias strips parallel to the bias cut edge. Cut these strips in random widths between 1" and 4". Repeat Steps 1A and 1B with the remaining 4 fabrics.

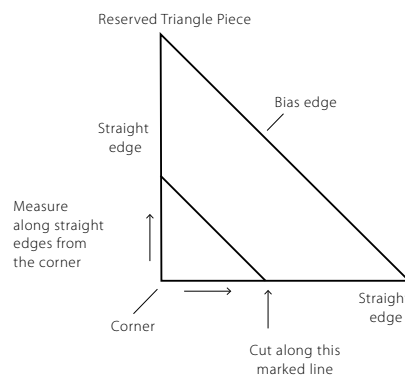
Fig. 3



- C.** To make the corner pieces, first remove the selvage edges from the reserved triangle pieces.
- D.** With the first corner piece, use your ruler and measure from the corner along one straight edge a distance between 2" and 6" and make a mark. Repeat along the other straight edge with the same measurement from the corner and make a mark. Then reposition your ruler and draw a 45° line from one straight edge to the other at these marks. Cut along this line. Repeat with the other 3 reserved triangle pieces to be used as the corners.

**Note:** Vary the measurements on each of the corner pieces for more variety in each of your squares.

Fig. 4



## Muslin

- E.** Cut 4 squares using the following measurements according to which size pillow you are making:
- 18" pillow – 10" squares
  - 20" pillow – 11" squares
  - 22" pillow – 12" squares
  - 24" pillow – 13" squares

## Pillow Back

- F.** Cut 1 square using the following measurements according to which size pillow you are making:
- 18" pillow – 19" square
  - 20" pillow – 21" square
  - 22" pillow – 22" square
  - 24" pillow – 25" square

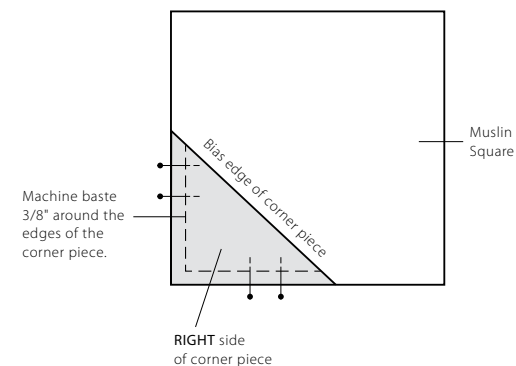
## Step 2

### Construct the patchwork squares for the pillow front

- A.** Place the first muslin square in front of you on a flat surface.
- B.** Next place the WRONG side of the first corner piece in the lower left corner of the muslin square and pin in place. Machine baste\* 3/8" around the outside edges to hold.

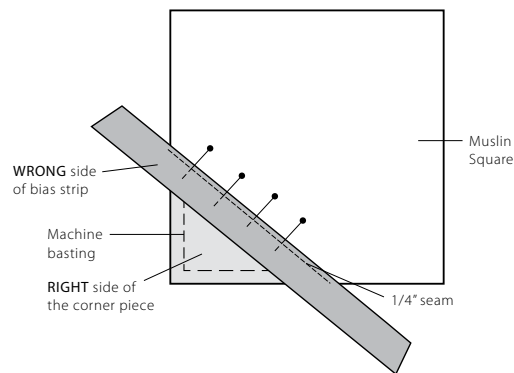
**Note:** Sew the bias strips to the muslin square in a random pattern mixing the prints and the sizes. Make sure that each strip will fully cover the muslin foundation when flipped and pressed RIGHT side out.

Fig. 5



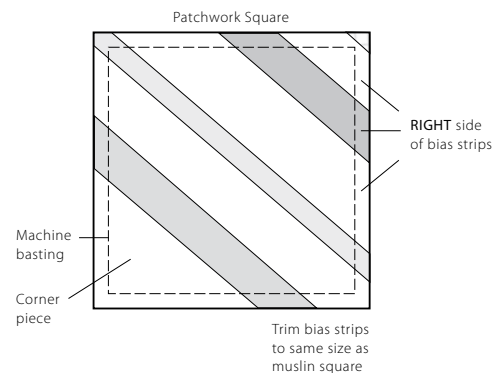
- C. Now lay the RIGHT side of a bias strip onto the RIGHT side of corner piece matching one long edge of the bias strip to the long, unsewn edge of the corner piece, and pin together. Sew a  $\frac{1}{4}$ " seam through all layers, backstitching at each end. Press\* the seam flat.

Fig. 6



- D. Now turn the bias strip so that the RIGHT side is facing up. Press the strip smooth along the seam, making sure there are no pleats. Pin the raw edge of the bias strip to the muslin. Then trim off any excess overhang of the bias strip and save to use in another section on the same block or another block.

Fig. 7

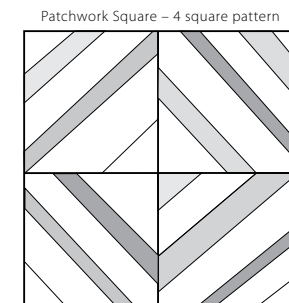


- E. Repeat these steps to pin and sew the next bias strip to the previous bias strip using a  $\frac{1}{4}$ " seam allowance. Press in the same manner. Continue this process until you have covered the muslin square with bias strips.
- F. Use your rotary cutter, mat and ruler to trim off any remaining fabric hanging over the edges of the muslin square. Do not trim any of the muslin. Machine baste  $\frac{3}{8}$ " around the outside edges of the square to hold the fabrics in place.
- G. Repeat Steps 2A through 2F to complete the remaining 3 patchwork squares

## Step 3 Construct the pillow front

- A. Lay the patchwork squares out in front of you on a flat surface in a 4 square design. Rotate each square so the corner piece is in the center.

Fig. 8



- B. Bring the RIGHT sides together of the top two patchwork squares matching the edges where the corner pieces connect and pin. Sew a  $\frac{1}{2}$ " seam across these pinned edges, backstitching at each end. Press the seam allowances to one side. Repeat with the bottom two squares. Press the seam allowances in the opposite direction.
- C. Now bring the top and bottom sections RIGHT sides together along the two long edges where the corner pieces connect, being careful to match the center seams, and pin. Sew a  $\frac{1}{2}$ " seam across the pinned edges backstitching at each end. Press the seam allowances to one side. Turn the Pillow Front so that the RIGHT side is facing up and press smooth.

## Step 4 Finish your pillow

- A. With the RIGHT sides together pin the Pillow Back to the Pillow Front, matching all edges and corners.
- B. Using a 1/2" seam allowance, sew the Pillow Back to the Front, backstitching and leaving a 16" opening on one side. Trim\* the corners being careful not to cut the stitching.

- C. Turn the cover RIGHT side out, gently pushing out the corners with a turning tool\* and press.
- D. Insert the pillow form through the opening of the cover.
- E. Fold each side of the opening 1/2" under and pin the edges together. Slipstitch\* along the pinned edges to close the opening.
- F. Have fun making more of these pillows - each one will have it's own unique personality!

Fig. 9

Stitch a 1/2" seam around the pinned edges, leaving a 16" opening centered along the bottom. Backstitch at each end.

