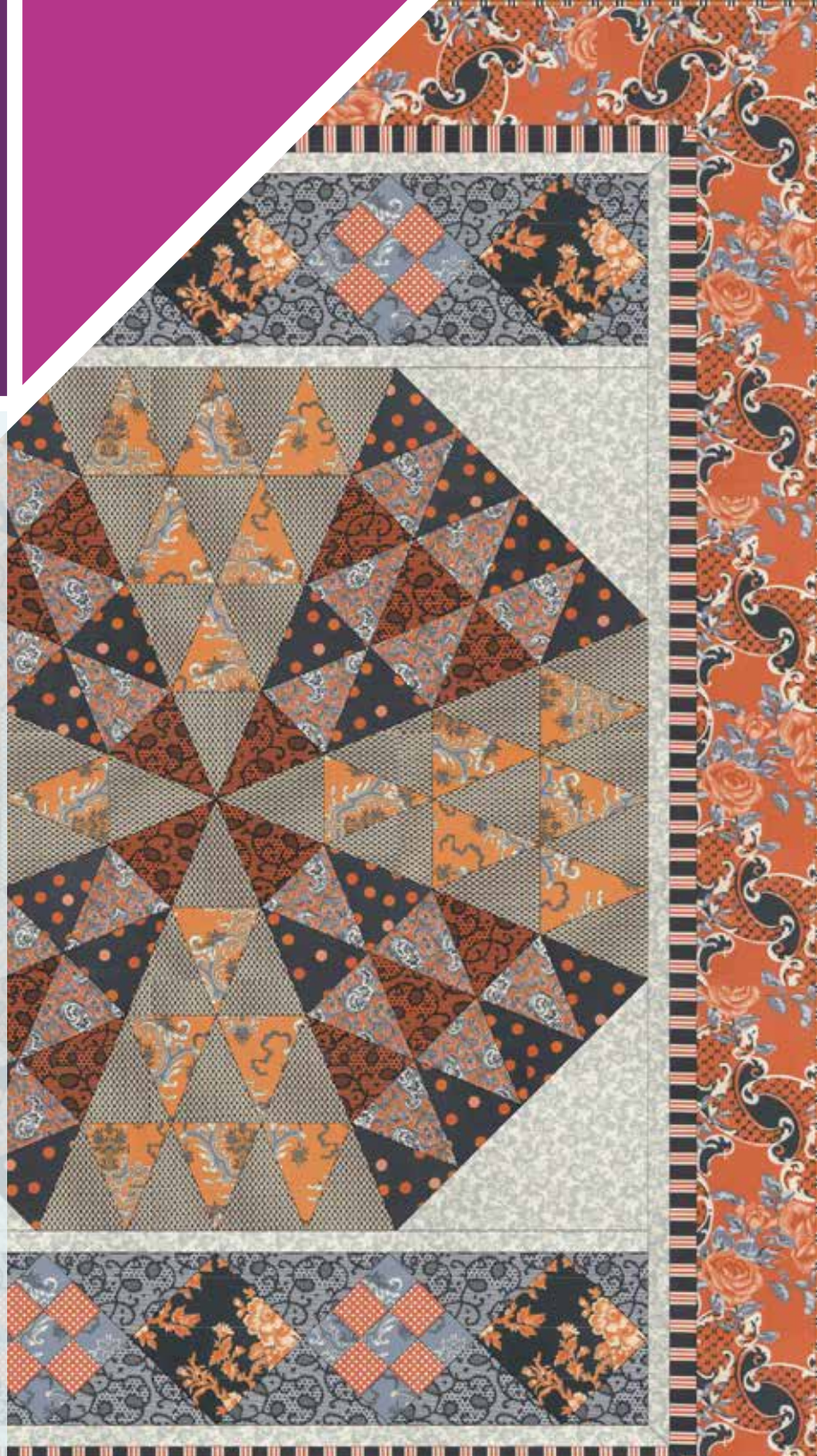


FreeSpirit

# Candelabra Quilt

**Skill Level:**  
Intermediate

**FreeSpirit  
presents:**  
Candelabra  
by  
Verna Mosquera



<b>Technique:</b>	Piecing, Quilting
<b>Designed By:</b>	Verna Mosquera and Kerri Thomson
<b>Brand:</b>	FreeSpirit Fabric
<b>Crafting Time:</b>	Longer Term

Inspired by the scariest holiday of the year, the oranges, yellows, blacks, and shades of gray in this fabric collection evoke pumpkins, harvest moons, and illuminated candles, as well as cauldrons, bats, and spooky shadows. As spirited as a night of trick or treating, or as bewitching as an enchanted garden on a foggy Halloween's Eve, the shadow roses, eerie toile, midnight lace, paisley potion, playful dots, and candy stripe fabrics blend together to make a perfect quilt for autumn.

**Finished Size:** 55 1/2" x 73 1/2" (141cm x 186.7cm)

### Fabric Requirements:

(A) PWVM157.0CLOU	7/8 yard (0.80m)
(B) PWVM152.0CROW	2/3 yard (0.61m)
(C) PWVM150.0ORAN	1/2 yard (0.46m)
(D) PWVM154.0ORAN	1/2 yard (0.46m)
(E) PWVM151.0ORAN	1/2 yard (0.46m)
(F) PWVM149.0ORAN	1/2 yard (0.46m)
(G) PWVM148.0CROW	3/8 yard (0.34m)
(H) PWVM150.0CROW	1/4 yard (0.23m)
(I) PWVM156.0ORAN	1/4 yard (0.23m)
(J) PWVM151.0CLOU	1/2 yard (0.46m)
(K) PWVM153.0CROW	3/8 yard (0.34m)
(L) PWVM147.0ORAN	2 1/4 yards (2.1m)
(M) PWVM148.0ORAN	3 3/8 yards (3.31m), for backing
(N) PWVM153.0ORAN	5/8 yard (0.57m), for binding

### Additional Requirements:

Sewing machine, 64" x 82" (162.6cm x 208.3cm) quilt batting, Coats Dual Duty XP All Purpose Thread in colors to match fabrics, Template plastic, Rotary cutter, ruler, and mat, Basic sewing and pressing supplies

[makeitcoats.com](http://makeitcoats.com)

[freespiritfabric.com](http://freespiritfabric.com)

FS0588VM

Page 1 of 7

Make it  
COATS

## Cutting:

**Notes:** WOF - Width of Fabric, LOF – Length of fabric  
Trace the triangle 1 and 2 patterns onto template plastic and cut out neatly. Refer to Fig. 1 for template placement on fabric when cutting.

### Fabric A cut:

- (1) 12 1/2" x WOF (31.8cm x WOF); re-cut into
- (2) 12 1/2" x 12 1/2" (31.8cm x 31.8cm)
- (8) 1 1/2" x WOF (3.8cm x WOF); re-cut (2) strips into (2) 1 1/2" x 40 1/2" (3.8cm x 102.9cm)

### Fabric B cut:

- (3) 5 1/2" x WOF (14cm x WOF); re-cut into (40) triangle 1's

### Fabric C cut:

- (2) 5 1/2" x WOF (14cm x WOF); re-cut into (24) triangle 1's

### Fabric D cut:

- (2) 5 1/2" x WOF (14cm x WOF); re-cut into (24) triangle 2's

### Fabric E cut:

- (2) 5 1/2" x WOF (14cm x WOF); re-cut into (16) triangle 2's

### Fabric F cut:

- (2) 5 1/2" x WOF (14cm x WOF); re-cut into (24) triangle 2's

### Fabric G cut:

- (1) 6 1/8" x WOF (15.6cm x WOF); re-cut into
- (6) 6 1/8" x 6 1/8" (15.6cm x 15.6cm)

### Fabric H cut:

- (2) 2 3/8" x WOF (6cm x WOF); re-cut into
- (20) 2 3/8" x 2 3/8" (6cm x 6cm)

### Fabric I cut:

- (1) 2 3/8" x WOF (6cm x WOF); re-cut into
- (16) 2 3/8" x 2 3/8" (6cm x 6cm)

### Fabric J cut:

- (1) 9 1/4" x WOF (23.5cm x WOF); re-cut into
- (4) 9 1/4" x 9 1/4" (23.5cm x 23.5cm)
- (1) 4 7/8" x WOF (12.4cm x WOF); re-cut into
- (4) 4 7/8" x 4 7/8" (12.4cm x 12.4cm)

### Fabric K cut:

- (6) 1 3/4" x WOF (4.4cm x WOF)

### Fabric L cut:

- (4) 6" x LOF (15.2cm x LOF)

### Fabric M, cut:

- (2) 64" x WOF (162.6cm x WOF)

### Fabric N, cut:

- (7) 2 1/2" x WOF (6.4cm x WOF), for binding

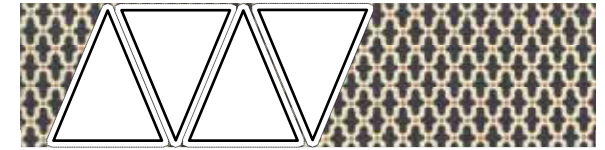


Fig. 1

## Sewing:

**Note:** Use a 1/4" (0.64cm) seam allowance throughout. Sew all pieces with right sides together and raw edges even using matching thread.

### Quilt Center:

1. Lay out (10) Fabric B and (6) Fabric C triangles (Fig.2). Sew the triangles together into horizontal rows and then sew the rows together to complete (1) triangle section. Make a total of (4) B/C sections.



Fig. 2

2. Lay out (6) Fabric **D**, (4) Fabric **E** and (6) Fabric **F** triangles (Fig. 3). Sew the triangles together into horizontal rows and then sew the rows together to complete (1) triangle section. Make a total of (4) **D/E/F** sections.

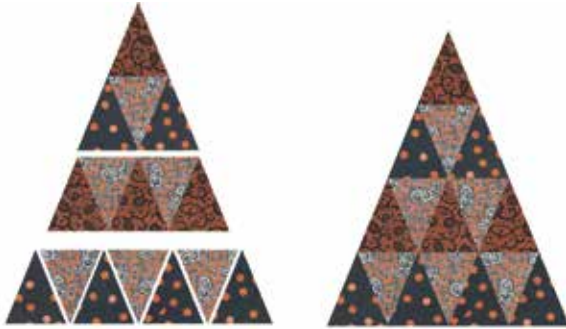


Fig. 3

3. Sew the triangle sections assembled in steps 1 and 2 together into (4) pairs. Sew the pairs together to make (2) half octagons, then sew the half octagons together. Press all of the seams in one direction. (Fig. 4)



Fig. 4

4. Cut the 12 1/2" (31.8cm) Fabric **A** squares on one diagonal to make (4) half-square triangles total. Sew to the corners of the octagon. Square up the section to measure 40 1/2" x 40 1/2" (102.9cm x 102.9cm) (Fig. 5).



Fig. 5

5. Lay out (5) Fabric **H** and (4) Fabric **I** squares (Fig. 6). Sew together in rows, press towards Fabric **H**, and then sew the rows together to complete (1) 6 1/8" x 6 1/8" (15.6cm x 15.6cm) nine patch. Make a total of (4).



Fig. 6

6. Cut the 9 1/4" (23.5cm) Fabric **J** squares on both diagonals to make (16) quarter-square triangles total.

7. Cut the 4 7/8" (12.4cm) Fabric **J** squares on one diagonal to make (8) half-square triangles total.

8. Lay out (3) 6 1/8" (15.6cm) Fabric **G** squares, (2) nine patches, (8) Fabric **J** quarter-square triangles, and (4) Fabric **J** half-square triangles (Fig. 7). Sew together in diagonal rows and then sew the rows together to complete (1) nine-patch strip unit. Make (2) strip units total.



Fig. 7

9. Sew a 1 1/2" x 40 1/2" (3.8cm x 102.9cm) Fabric **A** strip to the top and bottom of the quilt center, then sew a nine-patch strip unit to the Fabric **A** strips to complete the quilt center.

## Assembly:

*(Follow the Quilt Layout while assembling the quilt.)*

10. Sew the (6) 1 1/2" (3.8cm) Fabric **A** strips together and cut (2) side borders measuring 1 1/2" x 64" (3.8cm x 162.6cm) and (2) top/bottom borders measuring 1 1/2" x 46" (3.8cm x 116.8cm).

11. Sew the (6) 1 3/4" (4.4cm) Fabric **K** strips together and cut (2) side borders measuring 1 3/4" x 68" (4.4cm x 172.7cm) and (2) top/bottom borders measuring 1 3/4" x 49" (4.4cm x 124.5cm).

12. From the (4) 6" (15.2cm) x LOF Fabric **L** strips, cut (2) side borders measuring 6" x 79" (15.2cm x 200.6cm) and (2) top/bottom borders measuring 6" x 65" (15.2cm x 165cm).

13. Sew the Fabric **A**, **K** and **L** side borders together to make (2) strip units with the shorter strips centered on the longer strips. Press towards Fabric **L**. Repeat this process to make (2) top/bottom borders, pressing seam allowances toward Fabric **A**.

14. Center the side borders on the quilt center and pin (the borders will be longer than the quilt center on both ends). Sew along the pinned edge starting and stopping  $\frac{1}{4}$ " (0.64cm) away from the edge of the quilt center. Repeat to attach the top/bottom borders.

15. Fold the top of the quilt center to meet the left side to form a point at the top left corner. Lay flat and adjust the top and left borders so they lay flat and the seams nest, pin. Draw a line continuing the 45 degree fold from the corner of the quilt center across the borders. Sew along the draw line stopping at the border/quilt center seam. Check to see that the miter lays flat and trim the seam allowance to  $\frac{1}{4}$ " (0.64cm), press open. Repeat this process to miter the other 3 corners.



Quilt Layout

## Finishing:

16. Remove the selvages from the backing panels and sew together on one long edge. Trim to measure 64" x 82" (162.6cm x 208.3cm).

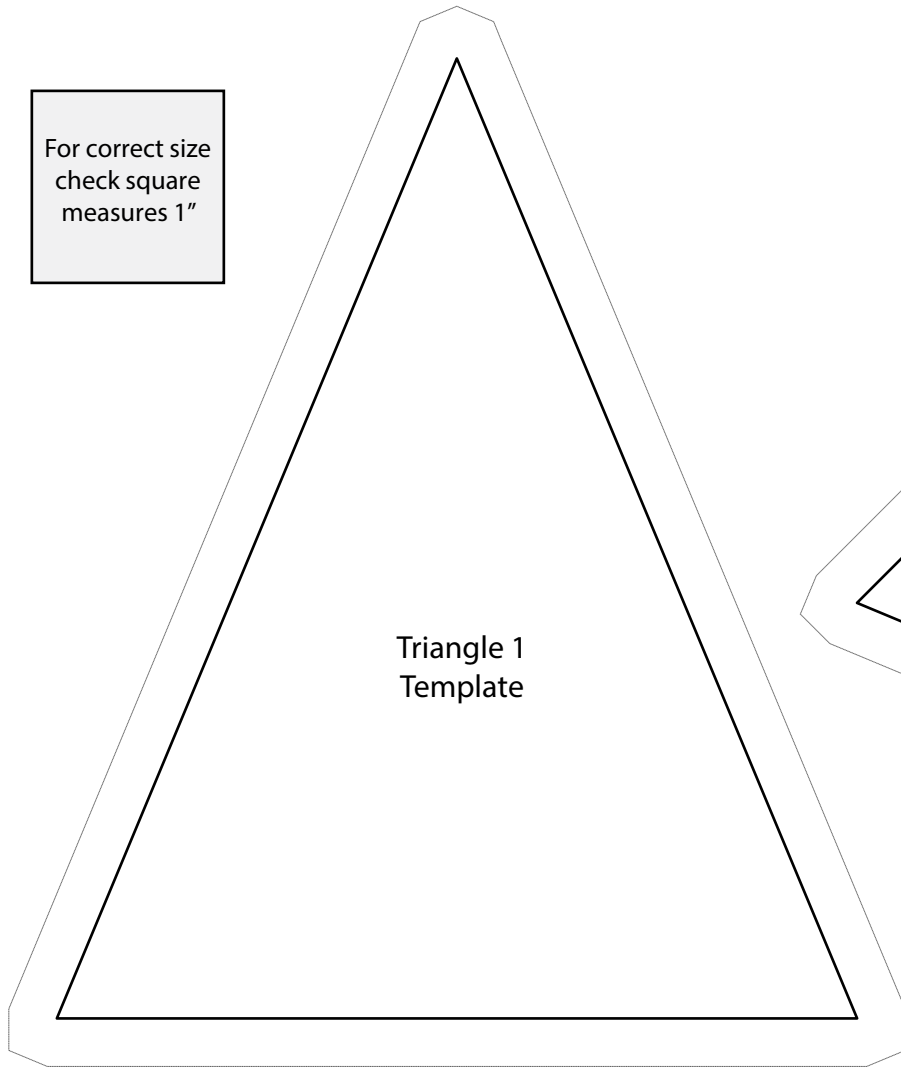
17. Layer backing right side down, batting, and quilt top right side up. Baste the layers together and quilt as desired. Trim excess batting and backing even with the quilt top.

18. Sew the (7) 2 1/2" x WOF (6.4cm x WOF) Fabric **N** strips into one continuous binding strip. Press seams open. Press the strip in half lengthwise with wrong sides together.

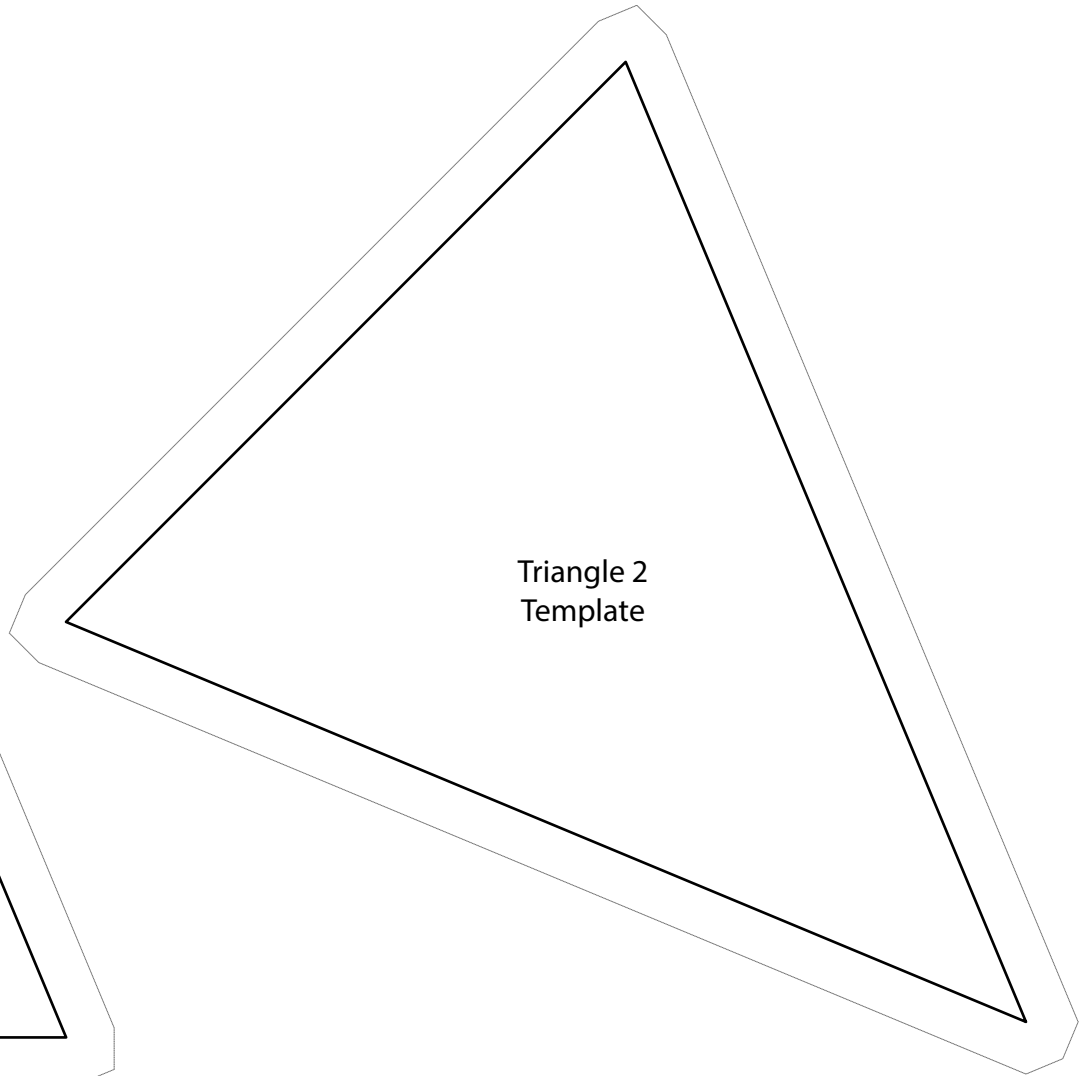
19. Leaving an 8" (20.3cm) tail, sew the binding to the top of the quilt through all layers with raw edges matching. Miter corners. Stop approximately 12" (30.5cm) from where you started. Lay both loose ends of binding flat along the quilt edge. Where the loose ends meet, fold them back on themselves and press to form a crease. Using this crease as your stitching line, sew the two open ends of the binding right sides together. Trim seam to 1/4" (0.64cm) and press open. Finish sewing binding to quilt.

20. Turn binding to back of quilt and blind stitch in place.

For correct size  
check square  
measures 1"



Triangle 1  
Template



Triangle 2  
Template

**Fabric Key**

- (A) PWVM157.0CLOU
- (B) PWVM152.0CROW
- (C) PWVM150.0ORAN
- (D) PWVM154.0ORAN
- (E) PWVM151.0ORAN
- (F) PWVM149.0ORAN
- (G) PWVM148.0CROW
- (H) PWVM150.0CROW
- (I) PWVM156.0ORAN
- (J) PWVM151.0CLOU
- (K) PWVM153.0CROW
- (L) PWVM147.0ORAN
- (M) PWVM148.0ORAN
- (N) PWVM153.0ORAN



(A)



(B)



(C)



(D)



(E)



(F)



(G)



(H)



(I)



(J)



(K)



(L)



(M)



(N)