

FreeSpirit

Mosaic Stripe

Skill Level:
Advanced

**FreeSpirit
presents:**
True Colors by
Heather Bailey



Technique:	Piecing and Quilting
Designed By:	Carl Hentsch of 3 Dog Design Company
Brand:	FreeSpirit Fabric
Crafting Time:	Longer Term

Give any room a pop of True Color with this beautiful mosaic quilt; fabrics are an array of bright colors and modern designs!

Finished Size:

42" x 63" (107cm x 160cm)

Finished Block Size:

10 1/2" x 10 1/2" (26.67cm x 26.67cm)

Fabric Requirements:

See Page 2 for Fabric Requirements.

Additional Requirements:

See Page 2 for Additional Requirements.

makeitcoats.com

freespiritfabric.com

FS0727HB

Page 1 of 11

Make it
COATS

Fabric Requirements:

(A) Smash Tag	PWTC035.GOLDX	1/3 yard (0.30m)
(B) Smash Tag	PWTC035.OCEAN	1/4 yard (0.23m)
(C) Smash Tag	PWTC035.ONYXX	1/4 yard (0.23m)
(D) Smash Tag	PWTC035.REDXX	1/4 yard (0.23m)
(E) Divvy Dot	PWTC036.NAVYX	1/3 yard (0.30m)
(F) Divvy Dot	PWTC036.ORANG	1/4 yard (0.23m)
(G) Divvy Dot	PWTC036.POPPY	1/4 yard (0.23m)
(H) Divvy Dot	PWTC036.VIOLE	3/8 yard (0.34m)
(I) Spark	PWTC037.CLOVE	1/3 yard (0.30m)
(J) Spark	PWTC037.SAPPH	5/8 yard (0.57m)
(K) Spark	PWTC037.SCARL	1/3 yard (0.30m)
(L) Spark	PWTC037.SUNSH	3/8 yard (0.34m)
(M) Checkerbone	PWTC038.SILVE	1/4 yard (0.23m)
(N) Checkerbone	PWTC038.TWILI	5/8 yard (0.57m)
(O) Checkerbone	PWTC038.VERDI	3/8 yard (0.34m)
(P) Checkerbone	PWTC038.WATER	3/8 yard (0.34m)
(Q) Zen Dot	PWTC039.LICOR	1 yard (0.90m)*
(R) Zen Dot	PWTC039.COBAL	1/2 yard (0.46m)
(S) Zen Dot	PWTC039.GREEN	1/4 yard (0.23m)
(T) Zen Dot	PWTC039.PINKX	3/8 yard (0.34m)
(Backing)	PWTC037.SAPPH	3 yards (2.74m)

*For Binding

Additional Requirements:

Sewing machine

Quilt batting, 51" x 71" (130cm x 180cm)

Coats Dual Duty XP® Thread in colors to match fabrics

Rotary cutter, ruler, and mat

Basic sewing and pressing supplies

Cutting:

Notes: WOF - Width of Fabric, LOF – Length of fabric

Fabrics A and K, cut from each:

- (2) 2 $\frac{3}{8}$ " x WOF (6cm x WOF), for Strip Sets C and A
- (11) 3 $\frac{1}{2}$ " x 3 $\frac{1}{2}$ " (8.9cm x 8.9cm)

Fabric B, cut:

- (4) 3 $\frac{1}{2}$ " x 3 $\frac{1}{2}$ " (8.9cm x 8.9cm)
- (12) 3 $\frac{3}{8}$ " x 3 $\frac{3}{8}$ " (8.6cm x 8.6cm); cut on the diagonal once, for Blocks 3 and 5

Fabric C, D, and M, cut from each:

- (3) 3 $\frac{1}{2}$ " x 3 $\frac{1}{2}$ " (8.9cm x 8.9cm)

Fabric E, cut:

- (3) 2 $\frac{3}{8}$ " x WOF (6cm x WOF), for Strip Set B

Fabric F and G, cut from each:

- (6) 3 $\frac{1}{2}$ " x 3 $\frac{1}{2}$ " (8.9cm x 8.9cm)

Fabric H, cut:

- (2) 2 $\frac{3}{8}$ " x WOF (6cm x WOF), for Strip Set A
- (5) 3 $\frac{1}{2}$ " x 3 $\frac{1}{2}$ " (8.9cm x 8.9cm)
- (12) 3 $\frac{3}{8}$ " x 3 $\frac{3}{8}$ " (8.6cm x 8.6cm); cut on the diagonal once, for Blocks 1 and 2

Fabric I, cut:

- (2) 2 $\frac{3}{8}$ " x WOF (6cm x WOF), for Strip Set C
- (8) 3 $\frac{1}{2}$ " x 3 $\frac{1}{2}$ " (8.9cm x 8.9cm)

Fabric J, cut:

- (3) 2 $\frac{3}{8}$ " x WOF (6cm x WOF), for Strip Set B
- (18) 3 $\frac{1}{2}$ " x 3 $\frac{1}{2}$ " (8.9cm x 8.9cm)

Fabric L, O, P, and T, cut from each:

- (2) 2 $\frac{3}{8}$ " x WOF (6cm x WOF), for Strip Sets A and C
- (14) 3 $\frac{1}{2}$ " x 3 $\frac{1}{2}$ " (8.9cm x 8.9cm)

Fabric N, cut:

- (3) 2 $\frac{3}{8}$ " x WOF (6cm x WOF), for Strip Set B
- (16) 3 $\frac{1}{2}$ " x 3 $\frac{1}{2}$ " (8.9cm x 8.9cm)

Fabric Q, cut:

- (6) 2 $\frac{1}{2}$ " x WOF (6.35cm x WOF) or enough 2 $\frac{1}{2}$ " (6.35cm) wide bias strips to equal at least 230" (584cm) when sewn together, for binding

Fabric R, cut:

- (3) 2 $\frac{3}{8}$ " x WOF (6cm x WOF), for Strip Set B
- (4) 3 $\frac{1}{2}$ " x 3 $\frac{1}{2}$ " (8.9cm x 8.9cm)
- (12) 3 $\frac{3}{8}$ " x 3 $\frac{3}{8}$ " (8.6cm x 8.6cm); cut on the diagonal once, for Blocks 4 and 6

Fabric S, cut:

- (12) 3 $\frac{3}{8}$ " x 3 $\frac{3}{8}$ " (8.9cm x 8.9cm); cut on the diagonal once, for Blocks 7 and 8

Backing Fabric, cut:

- (2) 51" x WOF (130cm x WOF)

Sewing:

Note: All seam allowances are $\frac{1}{4}$ " (0.64cm) unless otherwise noted.

Half-Square Triangle (HST) Units

1. Pair two 3 $\frac{1}{2}$ " (8.9cm) squares right sides together and draw a diagonal line on the wrong side of the lightest square (Fig. 1).
2. Stitch $\frac{1}{4}$ " (0.64cm) away from each side of the line.
3. Cut on the drawn line to yield two 3 $\frac{1}{8}$ " x 3 $\frac{1}{8}$ " (7.9cm x 7.9cm) HST units. Press all seams open.



Fig. 1

4. Following steps 1–3, make the HST units as instructed in steps 5 through 8.

5. Blocks 1 and 2. Sew nine Fabric **P** squares and nine Fabric **T** squares together and cut apart to make (18) 3 1/8" (7.9cm) Fabric **P/T** HST units. Sew six Fabric **G** squares and six Fabric **K** squares together and cut apart to make (12) 3 1/8" (7.9cm) Fabric **G/K** HST units. Sew three Fabric **M** squares and three Fabric **D** squares together and cut apart to make (6) 3 1/8" (7.9cm) Fabric **M/D** HST units. There are (36) HST units total for three Block 1 and three Block 2 (Fig. 2).



Fig. 2

6. Blocks 3 and 4. In the same manner, using two pairs of Fabric **R** squares and Fabric **P** squares, make (4) 3 1/8" (7.9cm) Fabric **R/P** HST units. Using three pairs of Fabric **N** squares and Fabric **H** squares, make (6) 3 1/8" (7.9cm) Fabric **N/H** HST units. Using five pairs of Fabric **J** squares and Fabric **T** squares, make (10) 3 1/8" (7.9cm) Fabric **J/T** HST units. With two pairs of Fabric **B** squares and Fabric **H** squares, make (4) 3 1/8" (7.9cm) Fabric **B/H** HST units. With three pairs of Fabric **J** squares and Fabric **P** squares, make (6) 3 1/8" (7.9cm) Fabric **J/P** HST units. Using five pairs of Fabric **N** squares and Fabric **K** squares, make (10) 3 1/8" (7.9cm) Fabric **N/K** HST units. (36) HST units will be used to make three Block 3 and three Block 4 (Fig. 3).

(7.9cm) Fabric **N/K** HST units. (36) HST units will be used to make three Block 3 and three Block 4 (Fig. 3).
Note: There will be a few assorted units left over from the different combinations.

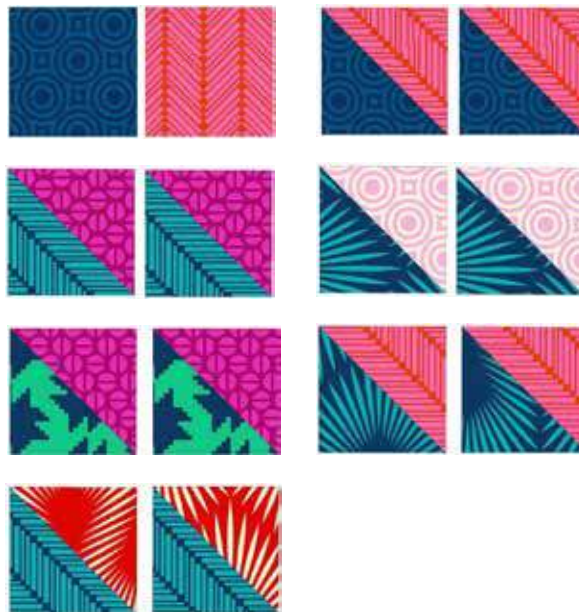


Fig. 3

7. Blocks 5 and 6. Sew two pairs of Fabric **R** squares and Fabric **A** squares together and cut apart to make (4) 3 1/8" (7.9cm) Fabric **R/A** HST units. In the same manner, use three pairs of Fabric **N** squares and Fabric **O** squares to make (6) 3 1/8" (7.9cm) Fabric **N/O** HST units. With five pairs of Fabric **J** squares and Fabric **L** squares, make (10) 3 1/8" (7.9cm) Fabric **J/L** HST units. Using two pairs of Fabric **B** squares and Fabric **O** squares, make (4) 3 1/8" (7.9cm) Fabric **B/O** HST units. Sew three pairs of Fabric **J** squares and Fabric **A** squares together and cut apart to yield (6) 3 1/8" (7.9cm) Fabric **J/A** HST units. Using five pairs of Fabric **N** squares and Fabric **I** squares, make (10) 3 1/8" (7.9cm) Fabric **N/I** HST units. (36) HST units total will be used to make three Block 5 and three Block 6 (Fig. 4).

(7.9cm) Fabric **B/O** HST units. Sew three pairs of Fabric **J** squares and Fabric **A** squares together and cut apart to yield (6) 3 1/8" (7.9cm) Fabric **J/A** HST units. Using five pairs of Fabric **N** squares and Fabric **I** squares, make (10) 3 1/8" (7.9cm) Fabric **N/I** HST units. (36) HST units total will be used to make three Block 5 and three Block 6 (Fig. 4).

Note: There will be a few assorted units left over from the different combinations.

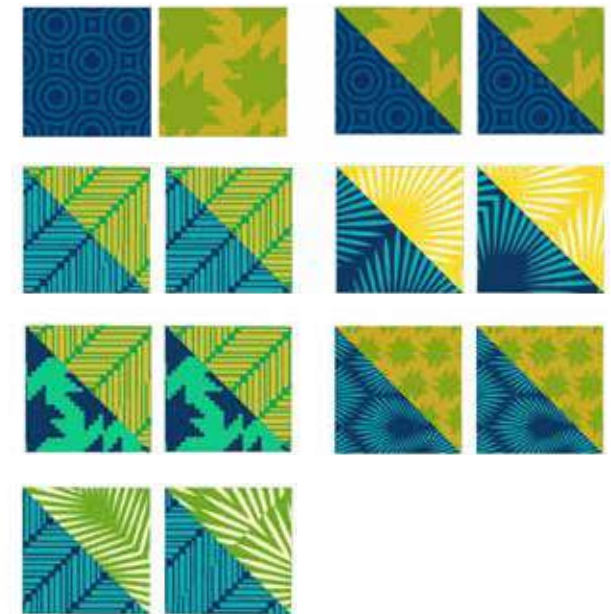


Fig. 4

8. Blocks 7 and 8. Sew nine pairs of Fabric **O** squares and Fabric **L** squares together and cut apart to yield (18) $3\frac{1}{8}$ " (7.9cm) Fabric **O/L** HST units. Using six pairs of Fabric **A** squares and Fabric **F** squares, make (12) $3\frac{1}{8}$ " (7.9cm) Fabric **A/F** HST units. With three pairs of Fabric **C** squares and **I** squares, make (6) $3\frac{1}{8}$ " (7.9cm) Fabric **C/I** HST units. (36) HST units will be used to make three Block 7 and three Block 8 (Fig. 5).



Fig. 5

Striped Half-Square Triangles (HSTs)

9. Strip Set **A**. Sew one each of the following $2\frac{3}{8}$ " (6cm) x WOF strips lengthwise together in the order given to make one Strip Set **A – T, H, P,** and **K**. Make two strip sets in total.

10. Align the 45-degree line of the clear rotary-cutting ruler with the bottom of the strip set and trim on the left side of the ruler (Fig. 6).

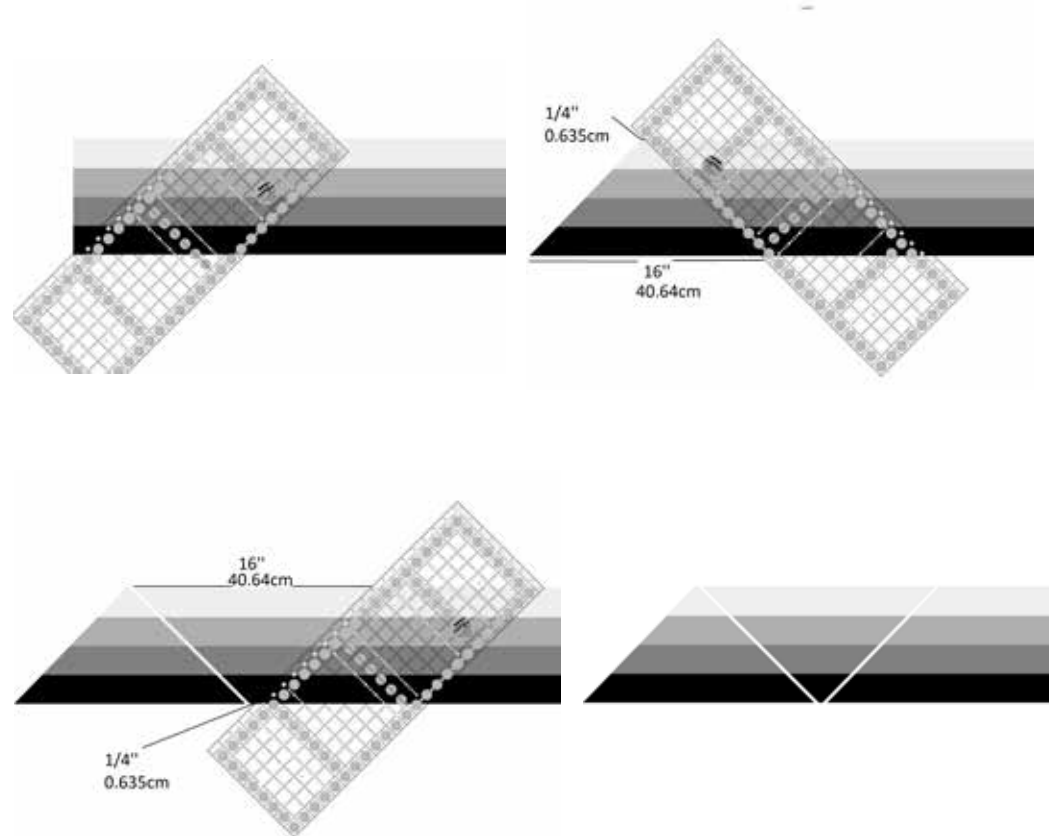


Fig. 6

Mosaic Stripe

11. Measure 16" (40.6cm) along the bottom of the strip set and make a mark. Place the left edge of the ruler on that mark and the 45-degree line on the bottom of the strip set.

Note: There will be a ¼" (0.64cm) space along the top edge. Trim along left edge of the ruler to make a Stripe **A** HST.

12. Measure 16" (40.6cm) along the top of the strip set and make a mark. Trim the left edge of the ruler to make a Reverse Stripe **A** HST (Fig. 7).



Strip Set A



Strip A HST



Reverse Strip A HST

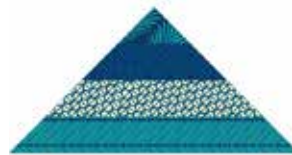
Fig. 7

13. From the two strip sets, cut a total of (3) Stripe **A** HSTs and (3) Reverse Stripe **A** HSTs.

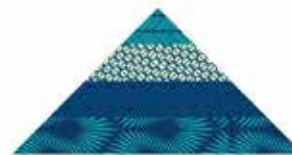
14. Strip Set **B**. Sew one each of the following 2 ¾" (6cm) x WOF strips lengthwise together in the order given to make one Strip Set **B** – **J**, **R**, **E**, and **N**. Make three strip sets in total. Repeat steps 10-12. From the three strip sets, cut a total of (6) Stripe **B** HSTs and (6) Reverse Stripe **B** HSTs (Fig. 8).



Strip Set B



Strip B HST



Reverse Strip B HST

Fig. 8

15. Strip Set **C**. Sew one each of the following 2 ¾" (6cm) x WOF strips lengthwise together in the order given to make one strip set – **L**, **A**, **O**, **I**. Make two strip sets in total. Repeat steps 10-12. From the two strip sets, cut a total of (3) Stripe **C** HSTs and (3) Reverse Stripe **C** HSTs (Fig. 9).



Strip Set C



Strip C HST



Reverse Strip C HST

Fig. 9

Blocks 1 and 2 Assembly

16. Gather the **P/T**, **G/K**, and **M/D** $3\frac{1}{8}$ " (7.9cm) HST units assembled in step 5. Using six HST units and four $3\frac{3}{8}$ " (8.6cm) Fabric **H** triangles, sew the units into rows, noting orientation of the fabrics; then sew the rows together to make one $11\frac{3}{8}$ " (28.9cm) HST block section. (Fig. 10) Center and sew one Stripe **A** HST to the block section (Fig. 11). Align the clear rotary cutting ruler with the left and bottom edges of Block 1 and square up the block to measure $11" \times 11"$ (27.9cm x 27.9cm). Make a total of three Block 1.

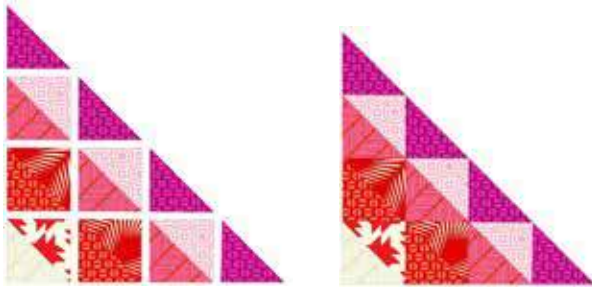


Fig. 10

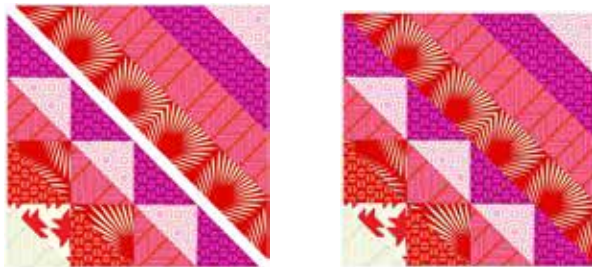


Fig. 11

17. In the same manner, use the Reverse Stripe **A** HSTs to make a total of three Block 2 (Fig. 12).



Fig. 12

Blocks 3 and 4 Assembly

18. Gather the **R/P**, **N/H**, and **J/T** HST units assembled in step 6. Using a total of six HST units and four $3\frac{3}{8}$ " (8.6cm) Fabric **B** triangles, sew the units into rows, noting orientation of the fabrics; then sew the rows together to make one $11\frac{3}{8}$ " (28.9cm) HST block section. (Fig. 13) Center and sew one Stripe **B** HST to the block section. Align the clear rotary cutting ruler with the left and bottom edges of Block 3 and square up the block to measure $11" \times 11"$ (27.9cm x 27.9cm). Make a total of three Block 3.



Fig. 13

19. Gather the **B/H**, **J/P**, and **N/K** HST units assembled in step 6. Using a total of six HST units and four $3 \frac{3}{8}$ " (8.6cm) Fabric **R** triangles, sew the units into rows, noting orientation of the fabrics; then sew the rows together to make one $11 \frac{3}{8}$ " (28.9cm) HST block section. (Fig. 14) Center and sew one Reverse Stripe **B** HST to the block section. Align the clear rotary cutting ruler with the left and bottom edges of Block 4 and square up the block to measure $11" \times 11"$ (27.9cm x 27.9cm). Make a total of three Block 4.

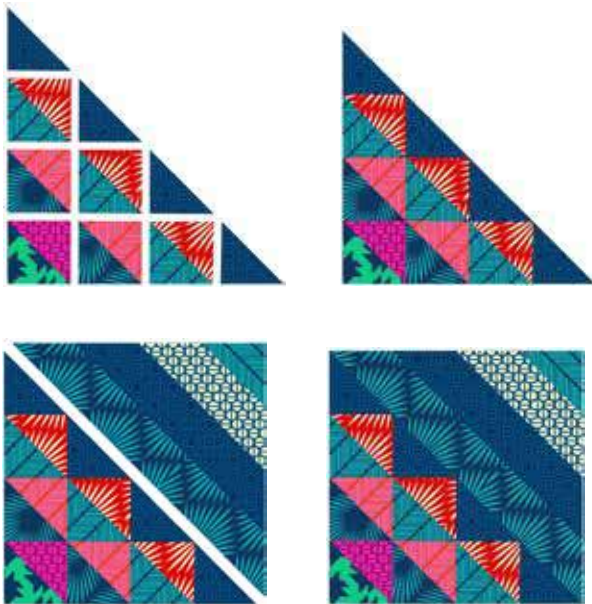


Fig. 14

Blocks 5 and 6 Assembly

20. Gather the **R/A**, **N/O**, and **J/L** HST units assembled in step 7. Using a total of six HST units and four $3 \frac{3}{8}$ " (8.6cm) Fabric **B** triangles, sew the units into rows, noting orientation of the fabrics; then sew the rows together to make one $11 \frac{3}{8}$ " (28.9cm) HST block section. (Fig. 15) Center and sew one Stripe **B** HST to the block section. Align the clear rotary cutting ruler with the left and bottom edges of Block 5 and square up the block to measure $11" \times 11"$ (27.9cm x 27.9cm). Make a total of three Block 5.

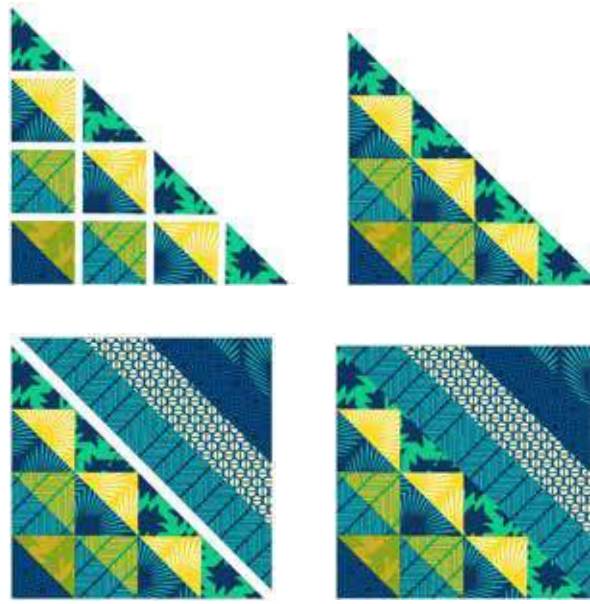


Fig. 15

21. Gather the **B/O** and **N/I** HST units assembled in step 7. Using a total of six HST units and four $3 \frac{3}{8}$ " (8.6cm) Fabric **R** triangles, sew the units into rows, noting orientation of the fabrics; then sew the rows together to make one $11 \frac{3}{8}$ " (28.9cm) HST block section. (Fig. 16) Center and sew one Reverse Stripe **B** HST to the block section. Align the clear rotary cutting ruler with the left and bottom edges of Block 6 and square up the block to measure $11" \times 11"$ (27.9cm x 27.9cm). Make a total of three Block 6.

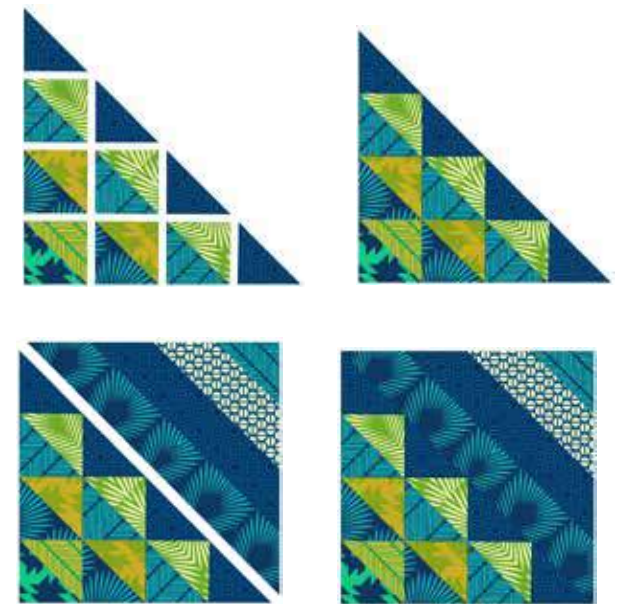


Fig. 16

Blocks 7 and 8 Assembly

22. Gather the **O/L**, **A/F**, and **C/I** HST units assembled in step 8. Using a total of six HST units and four $3\frac{3}{8}$ " Fabric **S** triangles, sew the units into rows, noting orientation of the fabrics; then sew the rows together to make one $11\frac{3}{8}$ " (28.9cm) HST block section. (Fig. 17) Center and sew one Stripe **C** HST to the block section. Align the clear rotary cutting ruler with the left and bottom edges of Block 7 and square up the block to measure $11" \times 11"$ (27.9cm x 27.9cm). Make a total of three Block 7. In the same manner, use the Reverse Stripe **C** HSTs to make three Block 8. (Fig. 18)

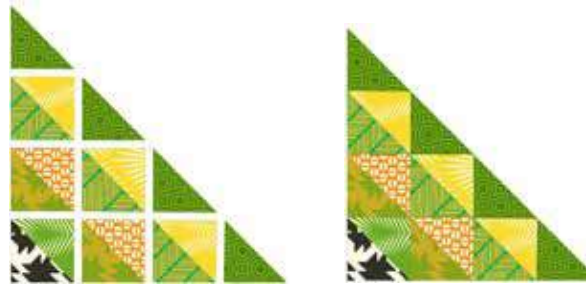


Fig. 17

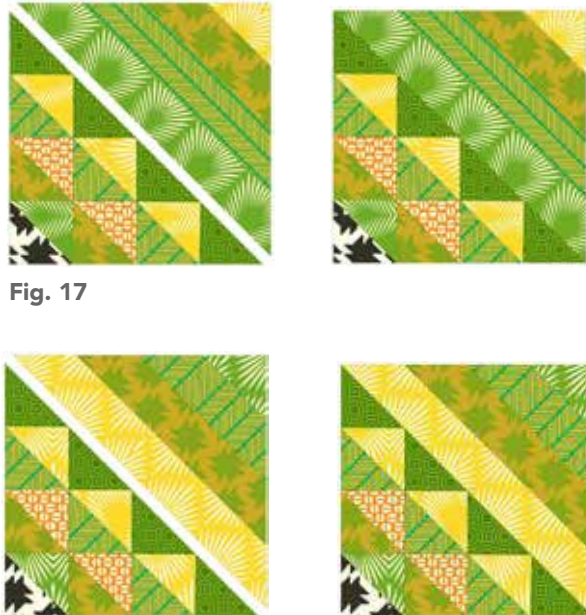


Fig. 18

Assembly:

Note: The quilt is assembled in four vertical columns.

23. Column 1. Noting orientation of the blocks, sew six blocks together in the following order – Block 1, Block 2, Block 2, Block 1, Block 1, Block 2. Column should measure $11" \times 63\frac{1}{2}"$ (27.9cm x 161.3cm).

24. Column 2. Noting orientation of the blocks, sew six blocks together in the following order – Block 3, Block 4, Block 4, Block 3, Block 3, Block 4. Column should measure $11" \times 63\frac{1}{2}"$ (27.9cm x 161.3cm).

25. Column 3. Noting orientation of the blocks, sew six blocks together in the following order – Block 5, Block 6, Block 6, Block 5, Block 5, Block 6. Column should measure $11" \times 63\frac{1}{2}"$ (27.9cm x 161.3cm).

26. Column 4. Noting orientation of the blocks, sew six blocks together in the following order – Block 7, Block 8, Block 8, Block 7, Block 7, Block 8. Column should measure $11" \times 63\frac{1}{2}"$ (27.9cm x 161.3cm).

27. Noting orientation of the columns, sew Columns 1-4 together to complete the quilt top. Quilt top should measure $42\frac{1}{2}" \times 63\frac{1}{2}"$ (108cm x 161.3cm).

Finishing:

28. Sew the backing pieces together and trim to measure 51" x 71" (130cm x 180cm).

29. Layer the backing right side down, batting, and center the quilt top right side up. Hand or machine quilt the quilt as desired. Trim the backing and batting even with the top.

30. Sew the (6) 2 1/2" x WOF (6.35cm x WOF) wide Fabric Q strips together using 45-degree seams to make a continuous strip. Fold strip in half lengthwise (with wrong sides together) and press.

31. Leaving an 8" (20.32cm) tail of binding, sew the binding to the top of the quilt through all layers, matching raw edges of the binding and quilt top. Miter corners. Stop sewing approximately 12" (30.5cm) from beginning. Lay both loose ends of binding flat along the quilt edge. Where the loose ends meet, fold ends back on themselves and press to form a crease. Using this crease as the stitching line, sew the two open ends of the binding with right sides together. Trim seam to 1/4" (0.64cm) and press seam open. Finish sewing binding to the quilt top.

32. Turn binding to the back of the quilt and blind stitch in place.



Quilt Layout

Fabric Key

- (A) Smash Tag
- (B) Smash Tag
- (C) Smash Tag
- (D) Smash Tag
- (E) Divvy Dot
- (F) Divvy Dot
- (G) Divvy Dot
- (H) Divvy Dot
- (I) Spark
- (J) Spark
- (K) Spark
- (L) Spark
- (M) Checkerbone
- (N) Checkerbone
- (O) Checkerbone
- (P) Checkerbone
- (Q) Zen Dot
- (R) Zen Dot
- (S) Zen Dot
- (T) Zen Dot
- (Backing)

- PWTC035.GOLDX
- PWTC035.OCEAN
- PWTC035.ONYXX
- PWTC035.REDXX
- PWTC036.NAVYX
- PWTC036.ORANG
- PWTC036.POPPY
- PWTC036.VIOLE
- PWTC037.CLOVE
- PWTC037.SAPPH
- PWTC037.SCARL
- PWTC037.SUNSH
- PWTC038.SILVE
- PWTC038.TWILI
- PWTC038.VERDI
- PWTC039.LICOR
- PWTC039.COBAL
- PWTC039.GREEN
- PWTC039.PINKX
- PWTC037.SAPPH



(A)



(B)



(C)



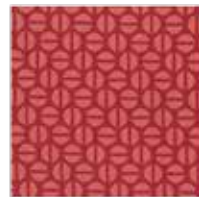
(D)



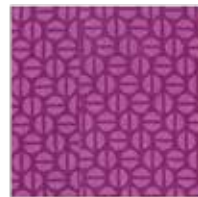
(E)



(F)



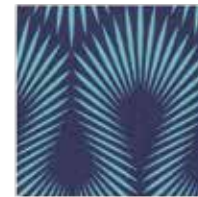
(G)



(H)



(I)



(J)



(K)



(L)



(M)



(N)



(O)



(P)



(Q)



(R)



(S)



(T)



(Backing)