

Featuring Stannie & Lloyd and Petite Prints by August Ellery

Spin Cycle Quilt

Finished Size: 75" x 75" (1.91m x 1.91m)

Project designed by Cluck Cluck Sew - Re-Colored by FreeSpirit Fabrics

Purchase pattern at cluckclucksew.com

Technique: Pieced | Skill Level: Advanced Beginner

Fabric Requirements

DESIGN	COLOR	ITEM ID	YARDAGE
(A) Curtsey & Clover	Dusk	PWAE005.DUSK	¼ yard (0.23m)
(B) Emma's Garden	Bloom	PWAE006.BLOOM	¼ yard (0.23m)
(C) Chaperone's Gingham	Basil	PWAE007.BASIL*	1 yard (0.91m)
(D) Spilled Tea	Delft	PWAE008.DELFT	¼ yard (0.23m)
(E) Cucumber Sandwich	Basil	PWAE010.BASIL	¼ yard (0.23m)
(F) Ditsy	Bloom	PWAE001.BLOOM	¼ yard (0.23m)
(G) Ditsy	Brambleberry	PWAE001.BRAMBLEBERRY	¼ yard (0.23m)
(H) Ditsy	Chamomile	PWAE001.CHAMOMILE	¼ yard (0.23m)
(I) Ditsy	Julep	PWAE001.JULEP	¼ yard (0.23m)
(J) Ditsy	Mint	PWAE001.MINT	¼ yard (0.23m)
(K) Ditsy	Periwinkle	PWAE001.PERIWINKLE	¼ yard (0.23m)
(L) Ditsy	Rosehip	PWAE001.ROSEHIP	¼ yard (0.23m)
(M) Ditsy	Watermelon	PWAE001.WATERMELON	¼ yard (0.23m)
(N) Vibe	Mellow	PWSK030.MELLOW	3 yards (2.74m)
(O) Caning	Mellow	PWSK036.MELLOW	⅞ yard (0.80m)

* includes binding

Backing (Purchased Separately)

44" (1.12m) wide

Mrs. Bennet's Bouquet

Sun

PWAE003.SUN

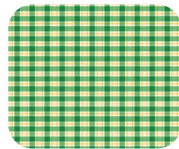
5 yards (4.57m)



(A)



(B)



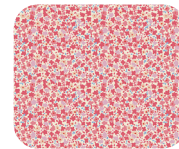
(C)



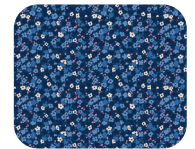
(D)



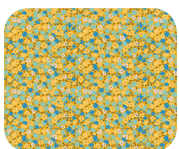
(E)



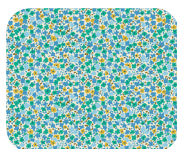
(F)



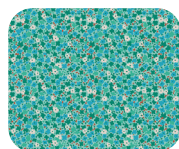
(G)



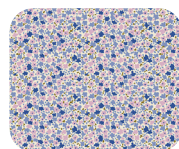
(H)



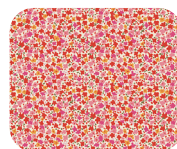
(I)



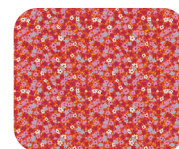
(J)



(K)



(L)



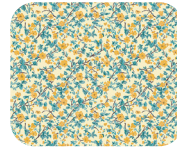
(M)



(N)



(O)



Backing
44"

If kitting, refer to the final pattern for yardage amounts, it is recommended that a sample is made to confirm accuracy.