



Free Spirit 

Bird Cage Mirror Mirror

Featuring *New Vintage* by Kathy Doughty

Frames of English paper pieced hexagons create windows to showcase the large-scale prints of *New Vintage* by Kathy Doughty. Two edge finishes offer options, so pick your pleasure.

Collection:	New Vintage by Kathy Doughty
Technique:	English Paper Piecing, Hand Appliqué
Skill Level:	Intermediate
Finished Size:	59" x 72" (149.86cm x 182.88cm)

All possible care has been taken to assure the accuracy of this pattern. We are not responsible for printing errors or the manner in which individual work varies. Please read the instructions carefully before starting this project. If kitting it is recommended a sample is made to confirm accuracy.

Project designed by Kathy Doughty

Tech edited by Linda Turner Griepentrog

Fabric Requirements

DESIGN	COLOR	ARTICLE CODE	YARDAGE
(A) L'oiseau	Azure	PWMO038.AZURE	$\frac{3}{4}$ yard (0.69m)
(B) L'oiseau	Puff	PWMO038.PUFF	$\frac{3}{4}$ yard (0.69m)
(C) L'oiseau	Currant	PWMO038.CURRANT	$\frac{3}{4}$ yard (0.69m)
(D) Plaid	Chartreuse	PWMO039.CHARTREUSE	$\frac{3}{4}$ yard (0.69m)
(E) Plaid	Marmalade	PWMO039.MARMALADE	$\frac{3}{4}$ yard (0.69m)
(F) Plaid	Tiffany	PWMO039.TIFFANY	$\frac{3}{4}$ yard (0.69m)
(G) Charmed	Jade	PWMO040.JADE	$\frac{2}{3}$ yard (0.61m)
(H) Charmed	Lilac	PWMO040.LILAC	$\frac{2}{3}$ yard (0.61m)
(I) Vintage Rose	Macaron	PWMO041.MACARON	$2\frac{3}{8}$ yards (2.17m)
(J) Mini Charm	Ganache	PWMO042.GANACHE	2 yards (1.83m)
(K) Tapestry Stripe	Fete	PWMO045.FETE	$\frac{3}{4}$ yard (0.69m)
(L) Tapestry Stripe	Gala	PWMO045.GALA	$\frac{3}{4}$ yard (0.69m)
(M) Tapestry Stripe	Gala	PWMO045.GALA*	$\frac{5}{8}$ yard (0.57m)

* optional binding

Backing (Purchased Separately)

44" (111.76cm) wide

Vintage Rose Citron PWMO041.CITRON $4\frac{1}{2}$ yards (4.11m)

OR

108" (274.32cm) wide

$2\frac{1}{4}$ yards (2.06m)

Additional Requirements

- 100% cotton thread in a color to match
- (218) 2" (5.08cm) hexagon papers
- Acrylic template with $\frac{3}{8}$ " (.95cm) seam allowance for 2" (5.08cm) hexagons (optional)
- Fabric glue stick
- Embroidery and/or Milliners needles
- 67" x 80" (170.18cm x 203.20cm) batting (optional for bound finish)
- Freezer paper (optional)



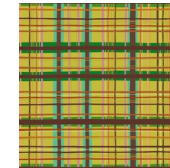
(A)



(B)



(C)



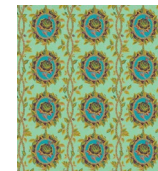
(D)



(E)



(F)



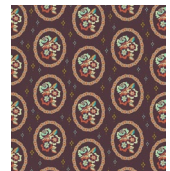
(G)



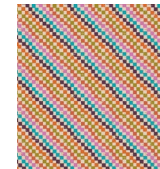
(H)



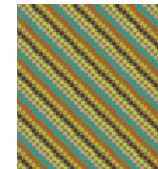
(I)



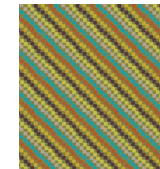
(J)



(K)



(L)



(M)



Backing
44"
(111.76cm)

Cutting:

WOF = Width of Fabric

LOF = Length of Fabric

Cutting diagrams have been provided for fussy-cutting fabric pieces for the quilt. *These diagrams are only to be used as a guide.* The fabric requirements specified are cut straight from the bolt and the beginning and ending points of the repeat may differ from the diagrams. There has been extra yardage allowed in the fabric requirements to ensure that all of the fussy-cut pieces can be cut no matter where the print repeat begins.

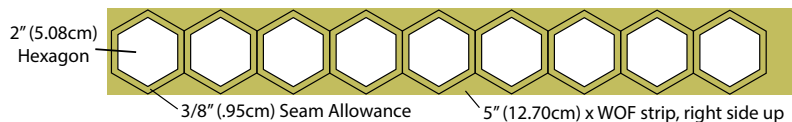
To Cut Hexagons for English Paper Piecing:

Fussy Cutting: Center a hexagon paper over the desired design on the right side of a single layer of fabric. Cut around the template adding a $\frac{3}{8}$ " (.95cm) seam allowance to all sides.

Optional Acrylic Template: Center the template over the desired design on the right side of a single layer of fabric and cut around.

Non-Fussy Cutting: Place a hexagon paper, with points on the top and bottom, on the right side of a 5" (12.70cm) strip of fabric. Cut around the template adding a $\frac{3}{8}$ " (.95cm) seam allowance to all sides. Work across the strip for the maximum number of hexagons per strip.

Hexagon Strip Cutting



Optional Acrylic Template: Place the template, with points on the top and bottom, on the right side of a 5" (12.70cm) strip of fabric and cut around.

Fabrics A, B, and C, fussy-cut from each:

(2) 14" x 18" (35.56cm x 45.72cm) rectangles, centered over the bird motifs

Fabric A, B, and C Cutting



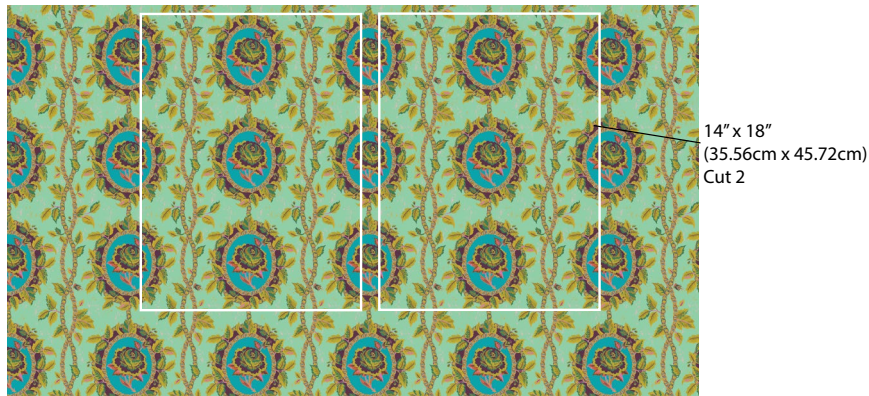
Fabrics D, E, and F, cut from each:

(4) 5" x WOF (12.70cm x WOF); sub-cut (32) hexagons

Fabrics G and H, fussy-cut from each:

(2) 14" x 18" (35.56cm x 45.72cm) rectangles, centered over the floral cameos

Fabric G and H Cutting



Fabric I, fussy-cut:

(4) 18" x WOF (45.72cm x WOF), so there are 2 sets of 2 strips over the same repeat in the print

Fabric J, fussy-cut:

(64) hexagons, centered over the floral cameos (shown right)

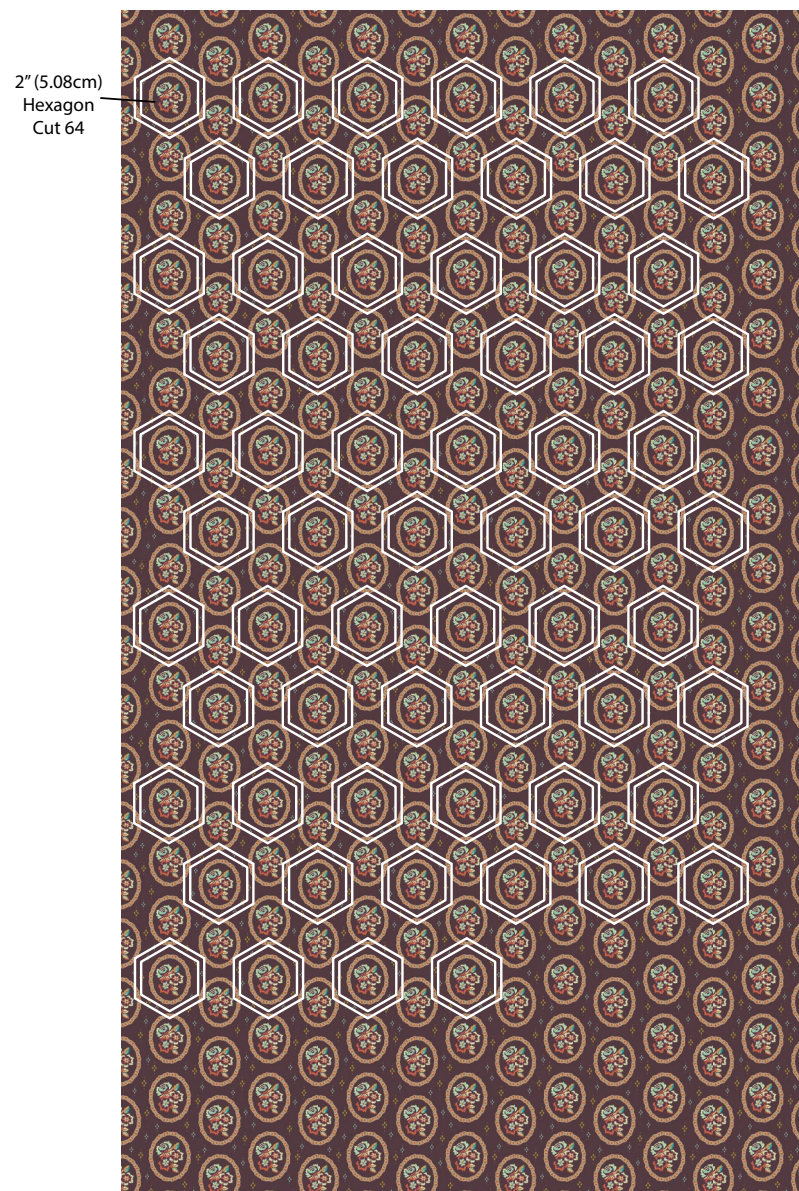
Fabric K and L, cut from each:

(4) 5" x WOF (12.70cm x WOF); sub-cut (29) hexagons

Fabric M, cut: (Optional Binding)

(7) 2½" x WOF (6.35cm x WOF)

Fabric J Cutting



Instructions

Pieces are sewn right sides together. Some knowledge of English Paper Piecing is assumed.

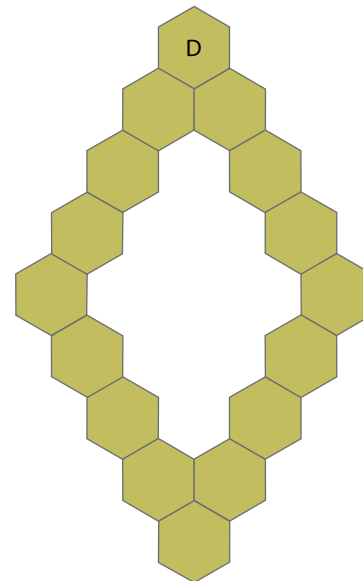
Baste Hexagon Edges

1. Center a 2" (5.08cm) hexagon paper template on the wrong side of a **Fabric D** hexagon. Use a fabric glue stick to apply glue around the outside edge of the paper. Working around the paper, one side at a time, fold the $\frac{3}{8}$ " (.95cm) seam allowance of the **Fabric D** Hexagon over the paper template and finger-press to adhere to the glue.
2. Repeat Step 1 to baste the edges of (32) **Fabric D, E, and F**; (64) **Fabric J** and (29) **Fabric K** and **L** hexagons.

Hexagon Frames

3. Lay out (16) **Fabric D** hexagons, in a frame as shown in **Fig. 1**. **Tip:** Use a square piece of cardboard or foam core to lay out the hexagons in the frame shape. Sew the hexagons together along the adjoining edges using the flat backstitch or your favorite method. Repeat to make (2) **Fabric D** Frames.

Fig. 1



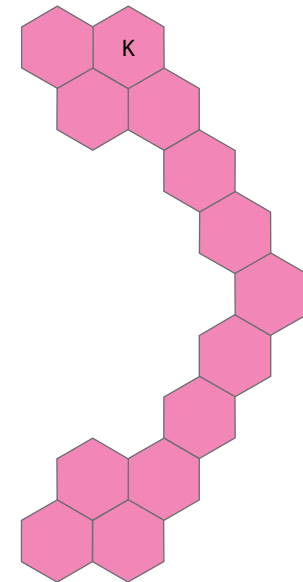
Fabric D Frame
Make 2

Flat Backstitch: Position two hexagons flat, wrong side up, aligning the edges to be sewn. Start stitching a short distance in from the corner and make three stitches back to the corner gliding the needle across the flat edge over the join of the seam to make invisible stitches. Reverse at the end and stitch across the joining edges.

4. Repeat Step 3 to make (2) **Fabric E** and **F**, and (1) **Fabric K** and **L** frames.

5. Lay out (13) **Fabric K** hexagons, in a half frame as shown in **Fig. 2**. Sew the hexagons together along the adjoining edges.

Fig. 2



Fabric K Half Frame
Make 1

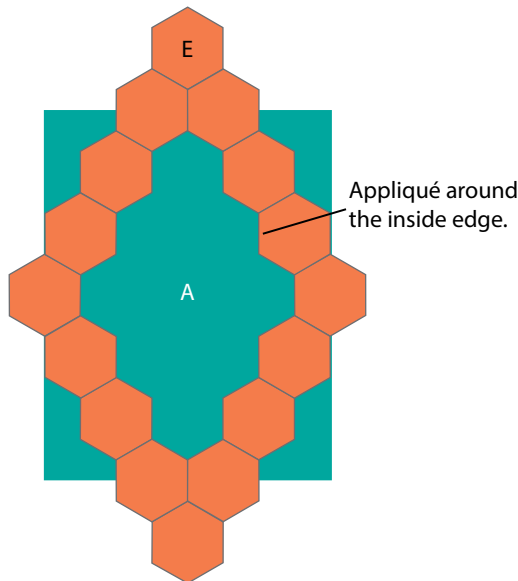
6. Repeat Step 5 to make (1) **Fabric L** half frame.

Frame Centers

Note: Follow the **Quilt Layout** diagram for the placement of the frame center print designs.

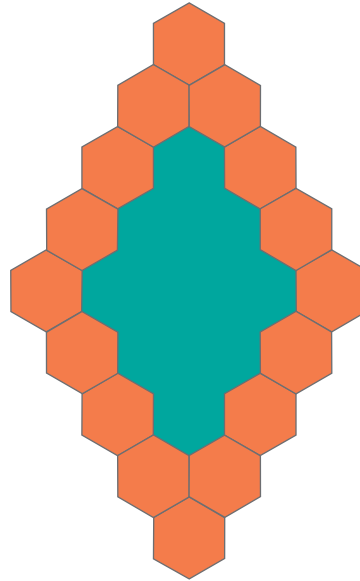
7. Place a **Fabric E** frame on top of a **Fabric A** rectangle, centering the frame over the bird motif and pin. (**Fig. 3**) Appliqué the inside edge of the frame to **Fabric A**.

Fig. 3



8. Carefully trim the excess **Fabric A** behind the frame to leave a $\frac{1}{2}$ " (1.27cm) seam allowance beyond the appliqué stitches. (**Fig. 4**)

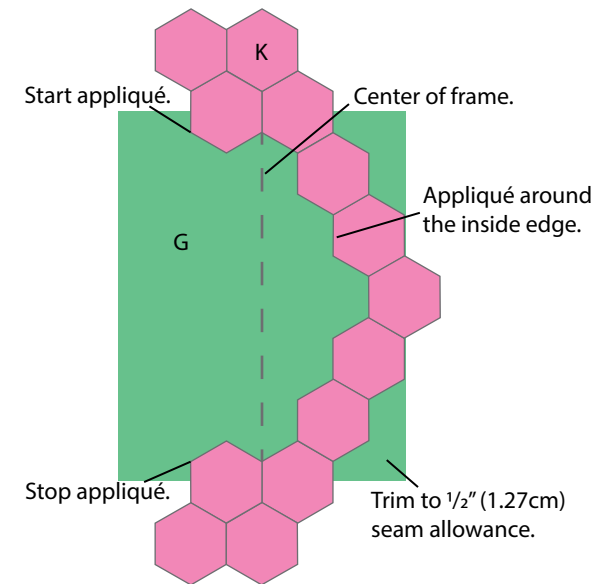
Fig. 4



9. Repeat Steps 7 and 8 to add centers to the frames to make (1) of each of the following combinations (center fabric/frame fabric): **Fabric C/D, B/F, C/F, B/E, D/A, G/K, and H/L**. **Tip:** To repeat the exact placement, iron freezer paper onto the first bird. Trace a few critical elements and remove the paper. Use the freezer paper for the second medallion and iron onto the fabric matching the elements.

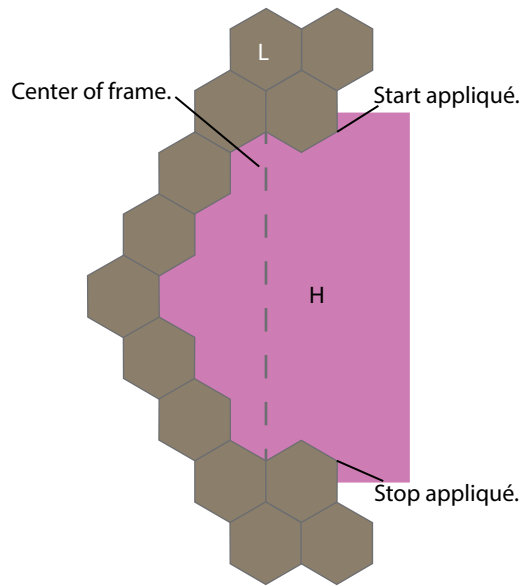
10. Place the **Fabric K** half frame on the right side of a **Fabric G** rectangle, lining up the floral cameos with what would be the center of the frame if it was complete, and pin. (**Fig. 5**) Appliqué the inside edge of the half frame to **Fabric G**, starting and stopping where shown. Carefully trim the excess **Fabric G** behind the frame to leave a $\frac{1}{2}$ " (1.27cm) seam allowance.

Fig. 5



11. Place the **Fabric L** half frame on the left side of a **Fabric H** rectangle, lining up the floral cameos with what would be the center of the frame if it was complete, and pin. (**Fig. 6**) Appliqué the inside edge of the half frame to **Fabric H**, starting and stopping where shown. Carefully trim the excess **Fabric H** behind the frame to leave a $\frac{1}{2}$ " (1.27cm) seam allowance.

Fig. 6



Quilt Top Assembly

Note: Follow the **Quilt Layout** diagram on page 9 while assembling the quilt. Pay close attention to the orientation of directional prints.

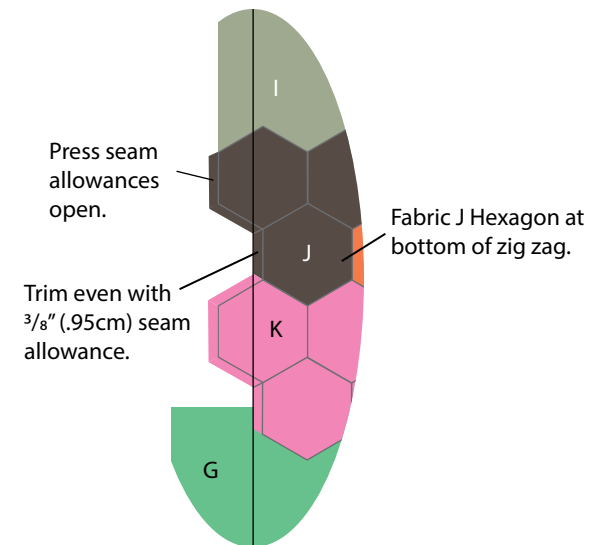
12. Lay out the (8) frames and (2) half frames and sew together along the adjoining edges.
13. Sew (32) **Fabric J** hexagons along the top edge of the frames. Repeat to sew **Fabric J** hexagons along the bottom edge of the frames to complete the quilt center.
14. Remove the papers from all of the hexagons except for the outside edges.
15. Sew together the (2) 18" x WOF (45.72cm x WOF) **Fabric I** strips, end to end, matching the print. Repeat to make (2) long strips. Cut (2) 18" x 62" (45.72cm x 157.48cm) top/bottom border strips, centered on the floral stripe.
16. Lay out the top border strip, right side up. Center the quilt center on top of the border strip, so the points of the top **Fabric J** hexagons are $4\frac{1}{4}$ " (10.80cm) from the border top edge. Removing the paper pieces as you go, pin and baste the top edge of the quilt center in place.
17. Appliqué the top edge of the quilt center to the top border. Remove the basting stitches and trim the excess border strip behind the quilt center leaving $\frac{1}{2}$ " (1.27cm) seam allowance.

18. Repeat Steps 16 and 17 to attach the bottom border to complete the quilt top.

Finishing

19. Remove the remaining hexagon papers from the side edges. Press the hexagon side seam allowances open.
20. Trim the side edges of the quilt even with the $\frac{3}{8}$ " (.95cm) seam allowance of the full **Fabric J** hexagons at the bottom of the zigzag as shown in **Fig. 7**.

Fig. 7



Left edge of Quilt Top

Note: The original quilt was finished using the pillowcase finish method with no batting. Instructions for pillowcase finish, with or without batting, or optional binding with batting are included.

Pillowcase Finish

21. Prepare the backing and lay out right side up (on batting, if using).
22. Position the quilt top on the back, right sides together and pin. Trim the backing and batting (if using) to match the quilt top.
23. Sew a $\frac{3}{8}$ " (.95cm) seam around the outside of the quilt leaving an opening for turning on one edge. Check to ensure all of the hexagon seam allowances on the sides are caught in the seam. Press the seams flat, then open.
24. Turn the quilt right side out and press flat. Slipstitch the opening closed and topstitch $\frac{1}{2}$ " (1.27cm) around the quilt edge.

(Optional) Binding Finish

25. Sew together the $2\frac{1}{2}$ " (6.35cm) **Fabric M** binding strips end to end using diagonal seams and a $\frac{1}{4}$ " (.64cm) seam allowance. Press seams open. Press the binding strip in half wrong sides together.
26. Layer backing (wrong side up), batting, and quilt top (right side up). Baste the layers together and quilt as desired. Trim excess batting and backing even with the top after quilting is completed.

27. Leaving an 8" (20.32cm) tail of binding, sew the binding to the top of the quilt through all layers matching all raw edges, using a $\frac{3}{8}$ " (.95cm) seam allowance. Miter corners. Stop approximately 12" (30.48cm) from where you started. Lay both loose ends of binding flat along quilt edge. Where the loose ends meet, fold them back on themselves and press to form a crease. Using this crease as your stitching line, sew the two open ends of the binding right sides together. Trim seam to $\frac{1}{4}$ " (.64cm) and press open. Finish sewing binding to quilt.
28. Turn the binding to the back of quilt and hand-stitch in place.

Quilt Layout

