



Gallery Quilt

Featuring Pompadours in Pink by Carolyn Gavin

Technique: Pieced

Skill Level: Advanced Beginner

Finished Size of Project:

62 $\frac{1}{2}$ " x 68 $\frac{1}{2}$ " (1.59m x 1.74m)

Finished Block Size:

7" x 8" (17.78cm x 20.32cm)

Project designed by: Stacey Day

Notes:

- Please note that the cover photo is a digital image. Due to variations in individual fussy cutting, your quilt top may not look identical.
- All possible care has been taken to ensure the accuracy of this pattern. We are not responsible for printing errors or the manner in which individual work varies. Please read the instructions carefully before starting this project. If kitting, it is recommended a sample is made to confirm accuracy.



FABRIC REQUIREMENTS (Tech edited by: Julie Kentner)

	Design	Color	Item ID	Yardage
A	Daisy Stripe	Black	PWCG029.BLACK*	1½ yard (1.03m)
B	Color Riot	Rainbow	PWCG030.RAINBOW	⅝ yards (0.57m)
C	Red Song	Multi	PWCG031.MULTI	⅜ yards (0.34m)
D	Anemones	Mint	PWCG032.MINT	2 yards (1.83m)
E	Mini Pompadours	Multi	PWCG033.MULTI	⅜ yards (0.34m)
F	Pompadours	Panel	PWCG035.PANEL	1 Panel
G	Summer Bouquet	Pink	PWCG036.PINK	⅔ yards (0.61m)
H	Daisy Chain	Navy	PWCG037.NAVY	2¼ yards (2.06m)
I	Anemones on Pink	Pink	PWCG038.PINK	⅝ yards (0.57m)

* includes binding

Backing (Purchased Separately)

44" (1.12m) wide

Daisy Check	Orange	PWCG034.ORANGE	4 yards (3.66m)
-------------	--------	----------------	-----------------

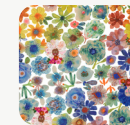
ADDITIONAL REQUIREMENTS

- 100% Cotton Thread
- 71" x 77" (1.80m x 1.96m) Batting

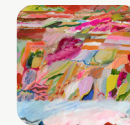
Swatches



A



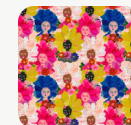
B



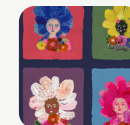
C



D



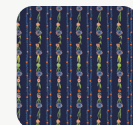
E



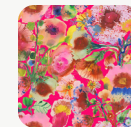
F



G



H



I



44"

CUTTING

WOF = Width of Fabric

LOF = Length of Fabric

Note: Label cut pieces with fabric letter identifier for easier piecing.

Fabric A, cut:

(8) 2" x WOF; sub-cut

(144) 2" squares

(8) 2½" x WOF for straight striped binding, or enough 2½" bias strips to make 275" bias binding

Fabrics B and I, cut from each:

(2) 8½" x WOF; sub-cut

(6) 7½" x 8½" rectangles

Fabrics C and E, cut from each:

(1) 8½" x WOF; sub-cut

(4) 7½" x 8½" rectangles

Fabric D, fussy cut:

(4) 5½" x LOF, cutting the outside edge of the border ⅜" from the edge of the floral stripe to create the cream edge inside of the border, sub-cut

(2) 5½" x 63"

(2) 5½" x 69"

Fabric F, fussy cut:

(8) 7½" x 8½" rectangles centered over the portraits

Fabric G, fussy cut:

(8) 7½" x 8½" rectangles centered over the bouquets

Fabric H, fussy cut:

(3) 8½" x WOF; sub-cut

(42) 2" x 8½" strips centered over the large floral

(1) 53" x WOF; sub-cut

(7) 2" x 53" strips centered over the large floral

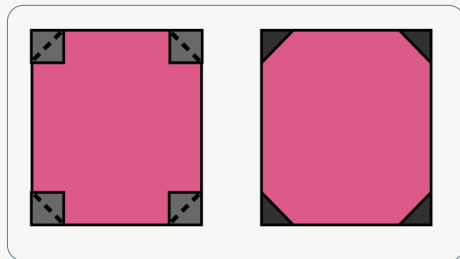
SEWING

Notes:

- All seam allowances are $\frac{1}{4}$ " (0.64cm) unless otherwise noted.
- Sew pieces right sides together (RST) using neutral or coordinating thread.
- Press seams open unless otherwise indicated.

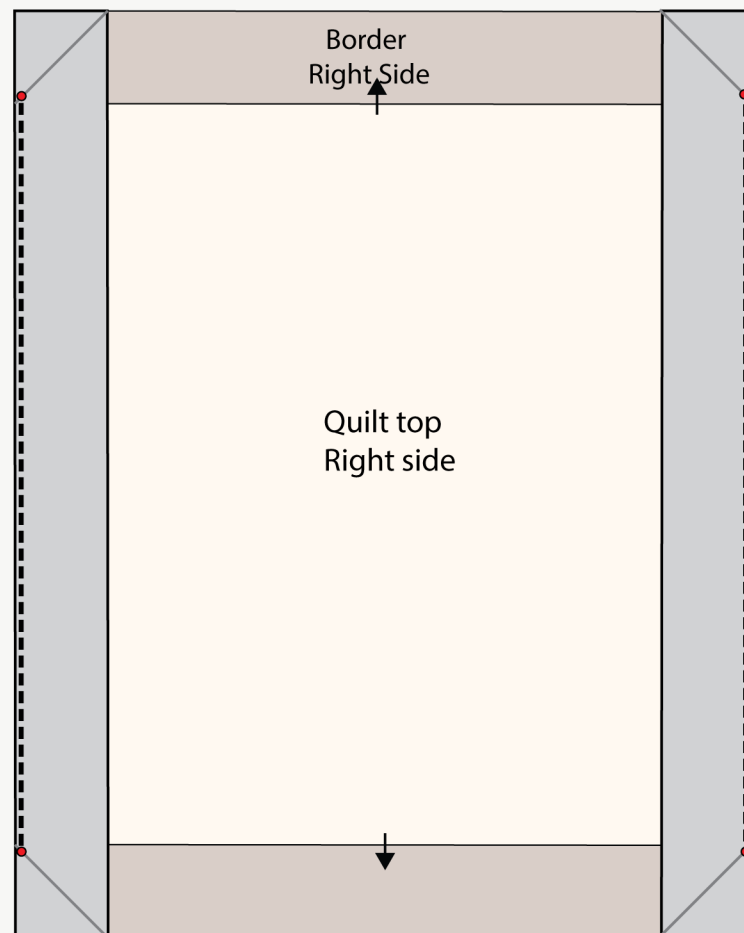
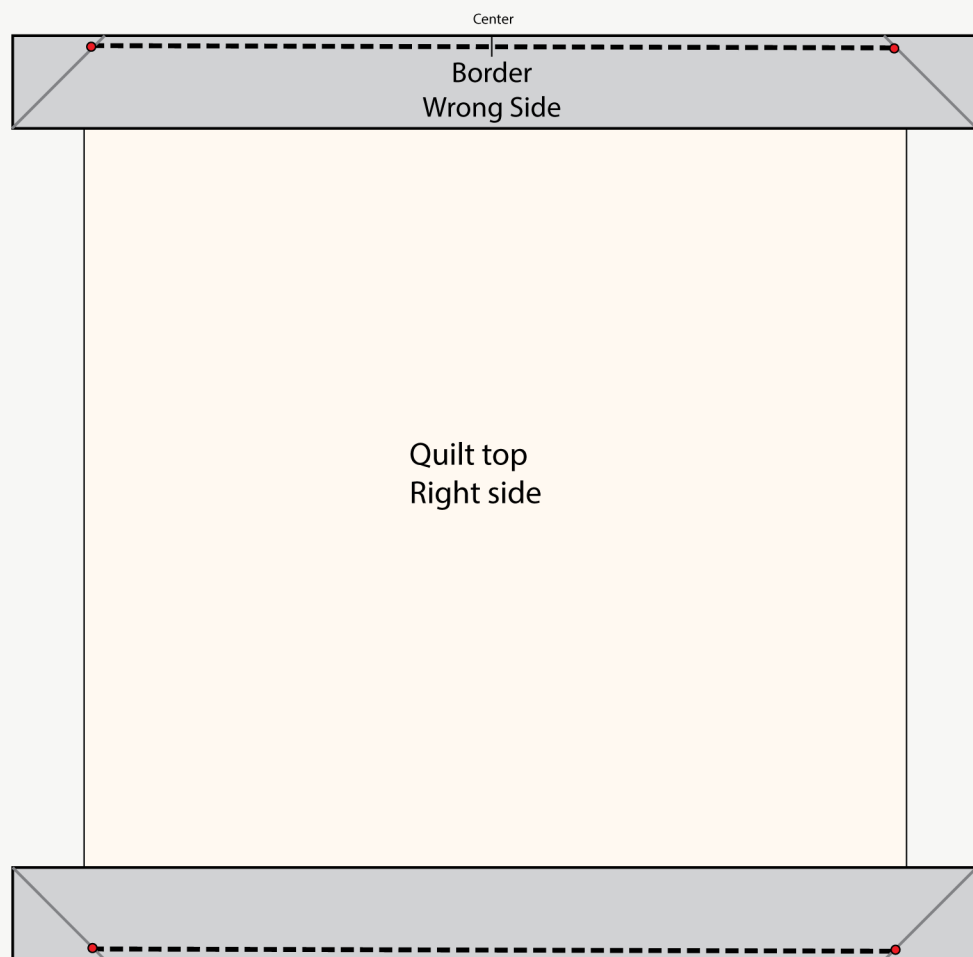
- 1 Draw a diagonal line across the wrong side of all (144) 2" **Fabric A** squares.
- 2 Pin (1) 2" **Fabric A** square in each corner of the (36) $7\frac{1}{2}$ " x $8\frac{1}{2}$ " **Fabric B, C, E, F, G,** and **I** rectangles as shown (**Fig. 1**). Stitch on the line, trim the seam allowance to $\frac{1}{4}$ ", and press out the **Fabric A** corners. Trim and square to $7\frac{1}{2}$ " x $8\frac{1}{2}$ " (if needed).

Fig. 1



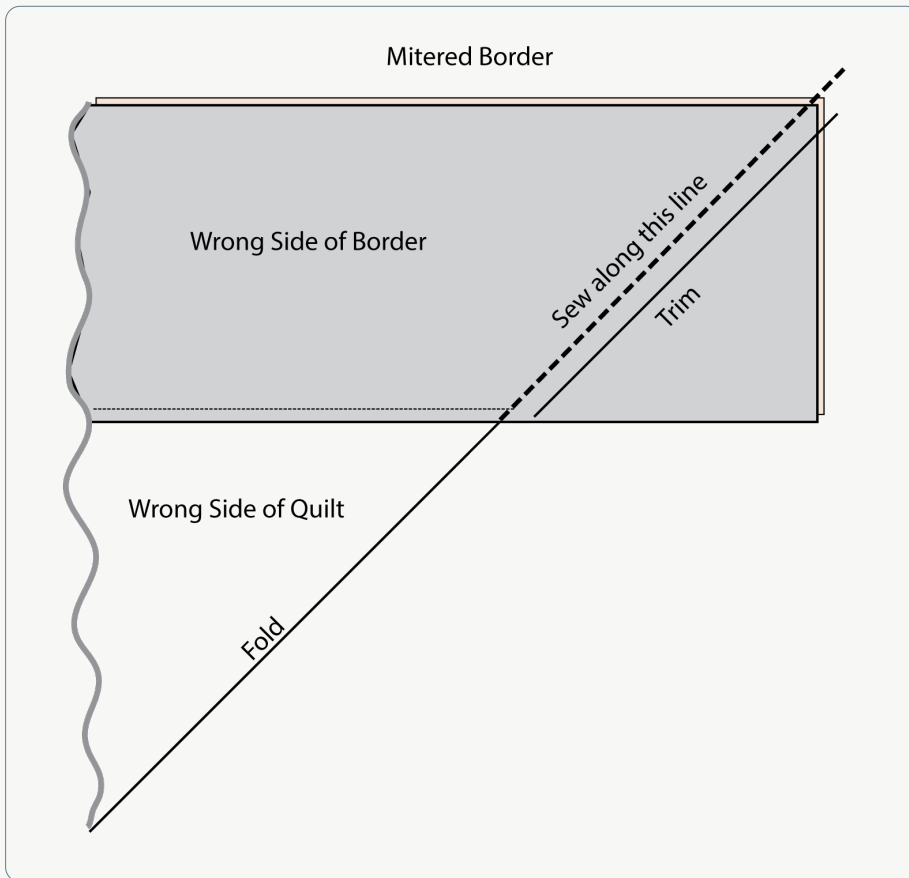
- 3 Referring to the **Quilt Layout** Diagram (page 8) for block placement and orientation, sew blocks together into (6) rows of (6) blocks each, with (1) 2" x $8\frac{1}{2}$ " **Fabric H** strip between each block and on either end of each row. Press towards **Fabric H**.
- 4 Sew rows together with (1) 2" x 53" **Fabric H** strip between each row, and on the top and bottom of the quilt top. Press towards **Fabric H**.
- 5 Draw a 45° diagonal line from the outside corner to the inside raw edge on each $5\frac{1}{2}$ " x 63" **Fabric D** strip as shown (**Fig. 2** on page 5). Mark the $\frac{1}{4}$ " seam allowance with a dot in each corner of the quilt top. Pin to the top and bottom, matching centers, and pinning at the seam allowance of the drawn line/quilt top corners. Sew from dot to dot, stopping and starting on each. Do not sew past the dot. Repeat with (2) $5\frac{1}{2}$ " x 69" **Fabric D** side borders.

Fig. 2



- 6 Fold the quilt in half right sides together, on the diagonal, so that the drawn lines on one set of adjacent border strips line up (**Fig. 3**). Pin and sew on the line. Trim the seam allowance to $\frac{1}{4}$ " and press open. Repeat for all four corners.

Fig. 3



FINISHING

- 7 Sew together the $2\frac{1}{2}$ " **Fabric A** binding strips end to end using diagonal seams. Press seams open. Press the binding strip in half, wrong sides together, and set aside until quilt is ready for binding.
- 8 Once the top is complete it is ready for quilting! Quilts can be sent out for longarm quilting or you can quilt it yourself. If you are sending the quilt out, it is important to discuss backing and batting requirements with the quilter to ensure they have everything needed to properly finish the quilt.
- 9 If quilting yourself and using 44" fabric for backing, choose your favorite method for piecing (taking time to remove selvages), then layer, baste and quilt. Once finished, trim excess batting and backing and bind according to your favorite method.

- 10** To complete binding by hand, it must first be machine sewn to the quilt top. Leaving an 8" tail of binding, sew binding to top of quilt through all layers, matching raw edges. Miter corners. Stop approximately 12" from where you started. Lay both loose ends of binding flat along quilt edge. Where the two loose ends meet, fold each side back on themselves and press to form a crease. Using this crease as your stitching line, sew the two open ends of the binding together right sides together. Trim seam to ¼" and press seam open. The binding will naturally fold, wrong sides together, and lay along the quilt edge. Finish sewing binding to quilt. Turn and press the binding to the back of the quilt and hand stitch in place.
- 11** If machine binding, complete the steps above only attach the binding to the BACK of the quilt, turn and press to the front of the quilt and machine stitch in place.

Quilt Layout

