



KAFFE
FASSETT
COLLECTIVE
for

Free Spirit

Eclectic - Red

Featuring Artisan by Kaffe Fassett

The glorious colors and exciting patterns of Kaffe Fassett prints are shown off to perfection in this fun-to-piece quilt.

Collection:	Artisan by Kaffe Fassett
Technique:	Piecing
Skill Level:	Easy
Finished Size:	52" x 58½" (132.08cm x 148.59cm)

Project designed by Stacey Day

Tech edited by Kathryn Patterson

Fabric Requirements

DESIGN	COLOR	ARTICLE CODE	YARDAGE
(A) Folk Flower	Pink	PWKF007.PINKX	¼ yard (22.86cm)
(B) Embroidered Flower Border	Orange	PWKF001.ORANG	¼ yard (22.86cm)
(C) Raked	Pumpkin	PWKF004.PUMPK	¼ yard (22.86cm)
(D) Layered Stripe	Orange	PWKF003.ORANG	¼ yard (22.86cm)
(E) Embroidered Flower Border	Yellow	PWKF001.YELLO	¼ yard (22.86cm)
(F) Gerbera	Sunshine	PWKF006.SUNSH	¼ yard (22.86cm)
(G) Wiggle	Orange	BPKF001.0ORAN	¼ yard (22.86cm)
(H) Kyoto	Orange	PWKF008.ORANG	¼ yard (22.86cm)
(I) Painted Pots	Yellow	PWKF002.YELLO	¼ yard (22.86cm)
(J) Squiggle	Mauve	PWKF005.MAUVE	¼ yard (22.86cm)
(K) Peapods	Pink	BKKF010.0PINK	¼ yard (22.86cm)
(L) Bombay Mix	Magenta	BKKF008.0MAGE	¼ yard (22.86cm)
(M) Tumbling Leaf	Magenta	BKKF007.0MAGE	¼ yard (22.86cm)
(N) Kaffe Classic FQ Precut	Lipstick	FB1FQGP.LIPST	1 FQ bundle
(O) Raked	Pumpkin	PWKF004.PUMPK*	½ yard (45.72cm)

* includes binding

Backing (Purchased Separately)

44" (111.76cm) wide

Belle Epoch Red PWGP133.REDXX 3¾ yards (3.08m)

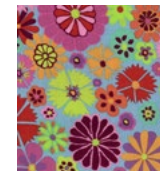
or

108" (274.32cm) wide

Fruit Mandala Pink QBGP003.2PINK 1½ yards (1.48m)

Additional Requirements

- 60" x 66" (152.4cm x 167.64cm) batting



(A)



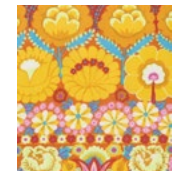
(B)



(C)



(D)



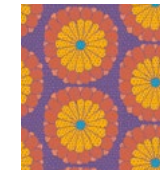
(E)



(F)



(G)



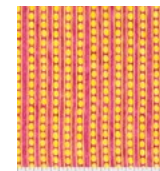
(H)



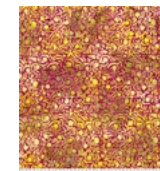
(I)



(J)



(K)



(L)



(M)



Fat Quarter

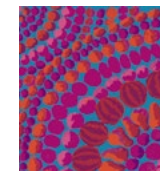
(N)



(O)



Backing
44"
(111.76cm)



Backing
108"
(274.32cm)

Cutting

WOF = Width of Fabric

From EACH $\frac{1}{4}$ yard, cut:

(6) $3\frac{1}{2}$ " x 10" (8.89cm x 25.4cm) strips

From EACH fat quarter, cut:

(4) $5\frac{1}{4}$ " (13.34cm) squares; cut once diagonally into (8) triangles

From binding fabric, cut:

(6) $2\frac{1}{2}$ " x WOF (6.35cm x WOF)

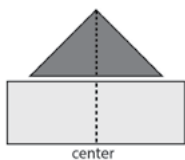
Sewing

Note: All seams allowances are $\frac{1}{4}$ " (.64cm). Pieces are sewn right sides together. Press all seams as indicated by arrows in the diagrams.

Blocks

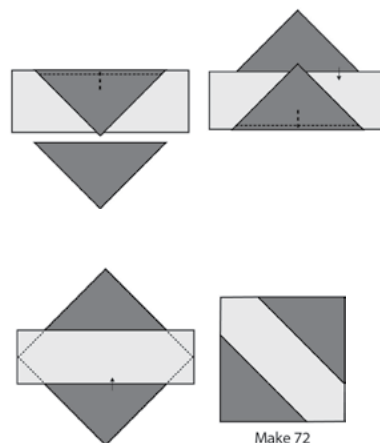
1. Mark the center of each $3\frac{1}{2}$ " x 10" (8.89cm x 25.4cm) strip and the diagonal side of each $5\frac{1}{4}$ " (13.34cm) triangle. (Fig. 1)

Fig. 1



2. Sew a matching pair of triangles to either side of a $3\frac{1}{2}$ " x 10" (8.89cm x 25.4cm) strip to make a block. Trim and square to 7" x 7" (17.78cm x 17.78cm). Make (72) blocks. There will be a few patches remaining. These can be pieced into the backing if desired. (Fig. 2)

Fig. 2



Quilt Top Assembly

3. Following the **Quilt Layout** diagram and paying close attention to orientation, sew the blocks together into (9) rows of (8) blocks each, matching seams. Alternate the direction of the pressing. Sew the rows together to complete the quilt top.

***Note:** The layout diagram showcases the Lipstick colorway.

Finishing

4. Cut and piece the backing to measure 60" x 66" (152.4cm x 167.64cm).
5. Sew together the (6) binding strips end to end using diagonal seams. Press the seams open. Press the binding strip in half wrong sides together.
6. Layer the backing (wrong side up), batting, and quilt top (right side up). Baste the layers together and quilt as desired. Trim excess batting and backing even with the top after quilting is completed.
7. Leaving an 8" (20.32cm) tail of binding, sew binding to top of quilt through all layers matching all raw edges. Miter corners. Stop approximately 12" (30.48cm) from where you started. Lay both loose ends of binding flat along quilt edge. Where these two loose ends meet, fold them back on themselves and press to form a crease. Using this crease as your stitching line, sew the two open ends of the binding right sides together. Trim seam to $\frac{1}{4}$ " (.64cm) and press open. Finish sewing binding to quilt.
8. Turn binding to back of quilt and hand-stitch in place.

