

Featuring Seeds and Seeds Collection 2 by Cori Dantini

Exploding Nine Patch Quilt

Finished Size: 60" x 80" (1.52m x 2.03m)

Project designed by Everyday Stitches

Purchase pattern at everydaystitches.com

Technique: Pieced | Skill Level: Advanced Beginner



Exploding Nine Patch Quilt

Fabric Requirements

DESIGN	COLOR	ITEM ID	YARDAGE
(A) Seeds	AMETHYST	PWCD012.XAMETHYST	$\frac{3}{4}$ yard (0.69m)
(B) Seeds	AQUAMARINE	PWCD012.XAQUAMARINE	$\frac{3}{4}$ yard (0.69m)
(C) Seeds	GRAPE	PWCD012.XGRAPE	$\frac{3}{4}$ yard (0.69m)
(D) Seeds	LAVENDER	PWCD012.XLAVENDER	$\frac{1}{2}$ yard (0.46m)
(E) Seeds	LIME	PWCD012.XLIME	$\frac{1}{4}$ yard (0.23m)
(F) Seeds	PEONY	PWCD012.XPEONY	$\frac{1}{4}$ yard (0.23m)
(G) Seeds	PERIWINKLE	PWCD012.XPERIWINKLE	$\frac{1}{2}$ yard (0.46m)
(H) Confetti Seeds	BLACK	PWCD043.XBLACK	$\frac{1}{4}$ yard (0.23m)
(I) Confetti Seeds	WHITE	PWCD043.XWHITE	$\frac{1}{4}$ yard (0.23m)
(J) Seeds	AZURE	PWCD012.XAZURE	$\frac{3}{4}$ yard (0.69m)
(K) Seeds	BUTTER	PWCD012.XBUTTER	$\frac{1}{2}$ yard (0.46m)
(L) Seeds	CARNATION	PWCD012.XCARNATION	$\frac{1}{2}$ yard (0.46m)
(M) Seeds	CHARCOAL	PWCD012.XCHARCOAL*	1 yard (0.91m)
(N) Seeds	CHERRY	PWCD012.XCHERRY	$\frac{1}{4}$ yard (0.23m)
(O) Seeds	COBALT	PWCD012.XCOBALT	$\frac{1}{2}$ yard (0.46m)
(P) Seeds	COTTONCANDY	PWCD012.XCOTTONCANDY	$\frac{1}{2}$ yard (0.46m)
(Q) Seeds	CRAFT	PWCD012.XCRAFT	$\frac{1}{4}$ yard (0.23m)
(R) Seeds	DOVE	PWCD012.XDOVE	$\frac{1}{4}$ yard (0.23m)
(S) Seeds	FERN	PWCD012.XFERN	$\frac{1}{2}$ yard (0.46m)
(T) Seeds	FOG	PWCD012.XFOG	$\frac{1}{2}$ yard (0.46m)
(U) Seeds	GRASS	PWCD012.XGRASS	$\frac{3}{4}$ yard (0.69m)
(V) Seeds	ICE	PWCD012.XICE	$\frac{1}{2}$ yard (0.46m)
(W) Seeds	ORANGE	PWCD012.XORANGE	$\frac{1}{4}$ yard (0.23m)
(X) Seeds	SKY	PWCD012.XSKY	$\frac{1}{4}$ yard (0.23m)
(Y) Seeds	SMOKE	PWCD012.XSMOKE	$\frac{1}{2}$ yard (0.46m)
(Z) Seeds	TANGERINE	PWCD012.XTANGERINE	$\frac{1}{4}$ yard (0.23m)
(AA) Seeds	WATERMELON	PWCD012.XWATERMELON	$\frac{1}{2}$ yard (0.46m)

* includes binding

Backing (Purchased Separately)

44" (1.12m) wide

Seeds	CHERRY	PWCD012.XCHERRY	4 $\frac{1}{2}$ yards (4.11m)
-------	--------	-----------------	-------------------------------

OR

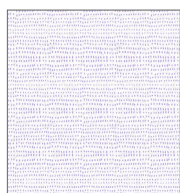
108" (2.74m) wide

Enchant	AQUA	QBFV001.AQUA	2 $\frac{1}{4}$ yards (2.06m)
---------	------	--------------	-------------------------------

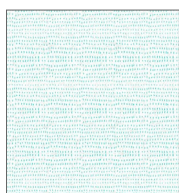
Fabric Swatches on next page...

*If kitting, refer to the final pattern for yardage amounts,
it is recommended that a sample is made to confirm accuracy.*

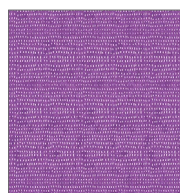
Fabric Swatches



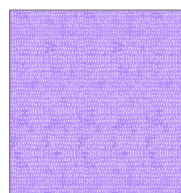
(A)



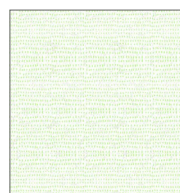
(B)



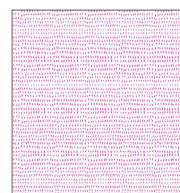
(C)



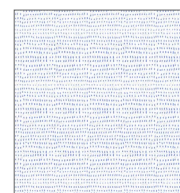
(D)



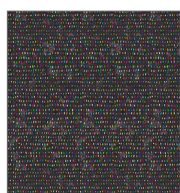
(E)



(F)



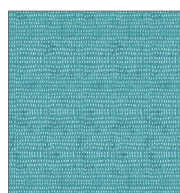
(G)



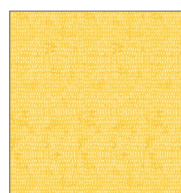
(H)



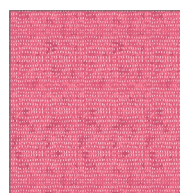
(I)



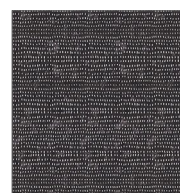
(J)



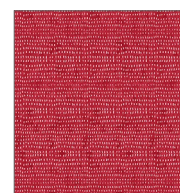
(K)



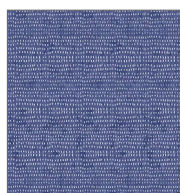
(L)



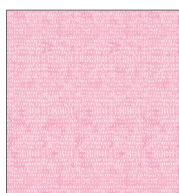
(M)



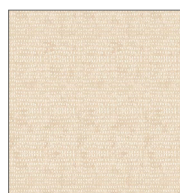
(N)



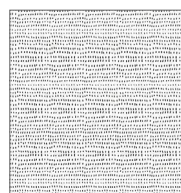
(O)



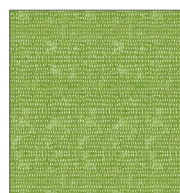
(P)



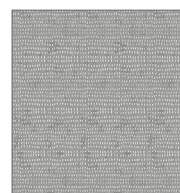
(Q)



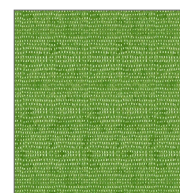
(R)



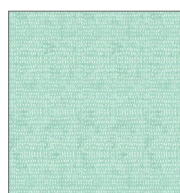
(S)



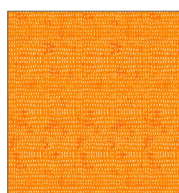
(T)



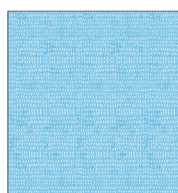
(U)



(V)



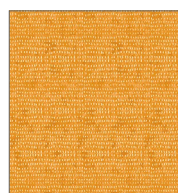
(W)



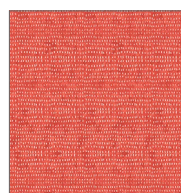
(X)



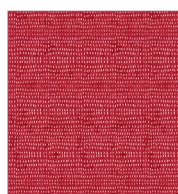
(Y)



(Z)



(AA)



**Backing
44"**



**Backing
108"**