



Featuring Spirit Winds by George Mendoza

Gateway Quilt

Finished Size: 64" x 75" (1.63m x 1.91m)

Project designed by Everyday Stitches

Purchase pattern at everydaystitches.com

Technique: Pieced | Skill Level: Advanced Beginner



Gateway Quilt

Fabric Requirements

DESIGN	COLOR	ITEM ID	YARDAGE
(A) Windows to the Soul	KALEIDO	PWGM001.KALEIDO	½ yard (0.46m)
(B) Star Dust	BLUE	PWGM002.BLUE	½ yard (0.46m)
(C) Maze of Mystery	BLACK	PWGM003.BLACK	½ yard (0.46m)
(D) Reflections	KALEIDO	PWGM004.KALEIDO	½ yard (0.46m)
(E) Sun Dancer	BLUE	PWGM005.BLUE	½ yard (0.46m)
(F) Starry, Starry Night	BLUE	PWGM006.BLUE	½ yard (0.46m)
(G) Twilight Dreams	KALEIDO	PWGM007.KALEIDO	½ yard (0.46m)
(H) Painted Bubbles	RED	PWGM008.RED	½ yard (0.46m)
(I) Colors of the Wind	KALEIDO	PWGM009.KALEIDO	½ yard (0.46m)
(J) Little Windows to the Soul	BLUE	PWGM010.BLUE	½ yard (0.46m)
(K) Designer Essential Solids	LICORICE	CSFSESS.LICOR*	⅝ yard (0.57m)
(L) Designer Essential Solids	MOJITO	CSFSESS.MOJIT	½ yard (0.46m)
(M) Designer Essential Solids	PINK	CSFSESS.PINKX	½ yard (0.46m)
(N) Designer Essential Solids	MESA	CSFSESS.MESAX	½ yard (0.46m)
(O) Designer Essential Solids	SHADOW	CSFSESS.SHADO	½ yard (0.46m)
(P) Designer Essential Solids	LEGENDARY	CSFSESS.LEGENDARY	½ yard (0.46m)
(Q) Designer Essential Solids	SNAPDRAGON	CSFSESS.SNAPDRAGON	½ yard (0.46m)
(R) Designer Essential Solids	HIBISCUS	CSFSESS.HIBIS	½ yard (0.46m)
(S) Designer Essential Solids	WISTERIA	CSFSESS.WISTE	½ yard (0.46m)
(T) Designer Essential Solids	PARROT BLUE	CSFSESS.PARBL	½ yard (0.46m)
(U) Designer Essential Solids	BLUE	CSFSESS.BLUEX	½ yard (0.46m)

* includes binding

Backing (Purchased Separately)

44" (1.12m) wide

Twilight Dreams	KALEIDO	PWGM007.KALEIDO	4¼ yards (3.89m)
-----------------	---------	-----------------	------------------

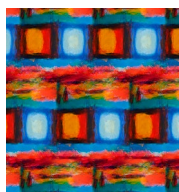
OR

108" (2.74m) wide			2⅞ yards (1.94m)
--------------------------	--	--	------------------

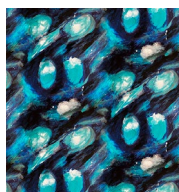
Fabric Swatches on next page...

*If kitting, refer to the final pattern for yardage amounts,
it is recommended that a sample is made to confirm accuracy.*

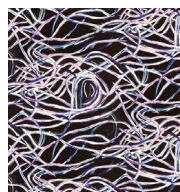
Fabric Swatches



(A)



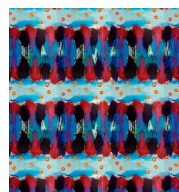
(B)



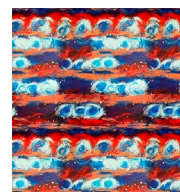
(C)



(D)



(E)



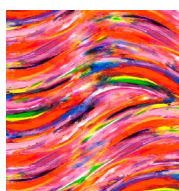
(F)



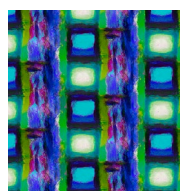
(G)



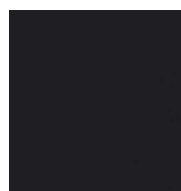
(H)



(I)



(J)



(K)



(L)



(M)



(N)



(O)



(P)



(Q)



(R)



(S)



(T)



(U)



Backing
44"