



Featuring Enrapture by Giucy Giuce

# Long Walk Quilt

Finished Size: 94" x 94" (2.39m x 2.39m)

*Project designed by Sew Kind of Wonderful*

*Purchase pattern at [sewkindofwonderful.com](http://sewkindofwonderful.com)*

**Technique:** Curve Piecing - Wonder Curve Ruler | **Skill Level:** Advanced Beginner



# Long Walk Quilt

## Fabric Requirements

| DESIGN        | COLOR       | ITEM ID             | YARDAGE          |
|---------------|-------------|---------------------|------------------|
| (A) Enrapture | Twilight    | PWGG001.TWILIGHT    | ½ yards (0.46m)  |
| (B) Covet     | Hush        | PWGG002.HUSH        | 1½ yard (1.37m)  |
| (C) Yearn     | Whisper     | PWGG003.WHISPER     | 2¼ yards (2.06m) |
| (D) Vining    | Cabernet    | PWGG004.CABERNET    | ⅝ yards (0.57m)  |
| (E) Vining    | Spice       | PWGG004.SPICE       | ⅜ yards (0.34m)  |
| (F) Vining    | Verdant     | PWGG004.VERDANT     | ⅜ yards (0.34m)  |
| (G) Entwined  | Canary      | PWGG005.CANARY      | ¼ yards (0.23m)  |
| (H) Entwined  | Winterberry | PWGG005.WINTERBERRY | ¼ yards (0.23m)  |
| (I) Amour     | Amethyst    | PWGG007.AMETHYST    | ¼ yards (0.23m)  |
| (J) Amour     | Spice       | PWGG007.SPICE       | ½ yards (0.46m)  |
| (K) Amour     | Turquoise   | PWGG007.TURQUOISE   | ⅜ yards (0.34m)  |
| (L) Flourish  | Amethyst    | PWGG008.AMETHYST    | ⅝ yards (0.57m)  |
| (M) Flourish  | Emerald     | PWGG008.EMERALD     | ⅜ yards (0.34m)  |
| (N) Flourish  | Garnet      | PWGG008.GARNET      | ¾ yards (0.69m)  |
| (O) Tiles     | Amethyst    | PWGG009.AMETHYST    | ¼ yards (0.23m)  |
| (P) Tiles     | Carnelian   | PWGG009.CARNELIAN   | ⅜ yards (0.34m)  |
| (Q) Tiles     | Emerald     | PWGG009.EMERALD     | ¼ yards (0.23m)  |
| (R) Particles | Ivory       | PWGG011.IVORY       | ⅔ yards (0.61m)  |
| (S) Particles | Onyx        | PWGG011.ONYX*       | ¾ yards (0.69m)  |

\* includes binding

## Backing (Purchased Separately)

### 44" (1.12m) wide

|       |      |              |                 |
|-------|------|--------------|-----------------|
| Covet | Hush | PWGG002.HUSH | 8 yards (7.32m) |
|-------|------|--------------|-----------------|

### OR

### 108" (2.74m) wide

|        |          |                  |                 |
|--------|----------|------------------|-----------------|
| Vining | Wisteria | QBGG001.WISTERIA | 3 yards (2.74m) |
|--------|----------|------------------|-----------------|

Fabric Swatches on next page...

*If kitting, refer to the final pattern for yardage amounts,  
it is recommended that a sample is made to confirm accuracy.*



## Fabric Swatches



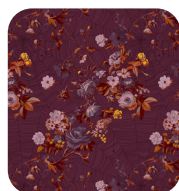
(A)



(B)



(C)



(D)



(E)



(F)



(G)



(H)



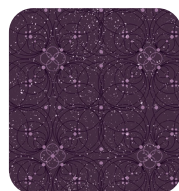
(I)



(J)



(K)



(L)



(M)



(N)



(O)



(P)



(Q)



(R)



(S)



Backing  
44"



Backing  
108"