

Thousand Mountains Quilt

Featuring Vegetable Patch by Jane Sassaman

Careful cuttings. Fussy-cut triangles transform into super-saturated garden rows in this Jane Sassaman design.

Techniques: Fussy Cutting, Pieced

Skill Level: Intermediate

Finished Size: 75" x 101" (1.91m x 2.57m)

Project designed by: Jane Sassaman

All possible care has been taken to ensure the accuracy of this pattern. We are not responsible for printing errors or the manner in which individual work varies. Please read the instructions carefully before starting this project. If kitting, it is recommended a sample is made to confirm accuracy.



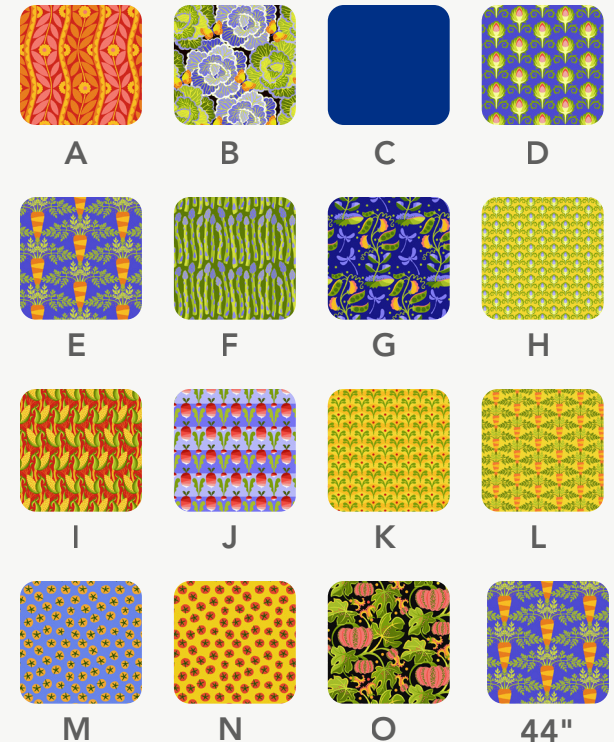
Thousand Mountains Quilt

FABRIC REQUIREMENTS (Tech edited by: Alison M. Schmidt)

	Design	Color	Item ID	Yardage
A	Brocade	Red	PWJS178.RED	4½ yards (4.11m)
B	Cabbage	Peri	PWJS179.PERI	1½ yard (1.37m)
C	Designer Essential Solid	Sapphire	CSFSESS.SAPPH*	1¼ yard (1.14m)
D	Artichoke	Blue	PWJS175.BLUE	1 yard (0.91m)
E	Carrot	Blue	PWJS181.BLUE	1⅞ yard (1.03m)
F	Asparagus	Green	PWJS177.GREEN	1 yard (0.91m)
G	Pea	Blue	PWJS185.BLUE	1 yard (0.91m)
H	SM Artichoke	Yellow	PWJS176.YELLOW	⅝ yards (0.57m)
I	SM Corn	Red	PWJS184.RED	⅝ yards (0.57m)
J	Radish	Red	PWJS187.RED	⅝ yards (0.57m)
K	Sprout	Yellow	PWJS188.YELLOW	⅝ yards (0.57m)
L	SM Carrot	Yellow	PWJS180.YELLOW	⅝ yards (0.57m)
M	Tomato	Blue	PWJS189.BLUE	⅜ yards (0.34m)
N	Tomato	Yellow	PWJS189.YELLOW	⅜ yards (0.34m)
O	Pumpkin	Pink	PWJS186.PINK	⅜ yards (0.34m)

* includes binding

Swatches



Backing (Purchased Separately)

44" (1.12m) wide

Carrot	Blue	PWJS181.BLUE	7⅞ yards (6.52m)
--------	------	--------------	------------------

ADDITIONAL REQUIREMENTS

- 100% Cotton Thread
- 83" x 109" (2.11m x 2.77m) batting
- **Optional:** Spray starch or starch alternative, template plastic, removable fabric marker

PREPARATION

Print 1 each of the Side Triangle 1 and Side Triangle 2 and 2 each of the Full Triangle template pattern pieces on pages 11-16. Tape the template sections together along the marked lines. If using template plastic, trace the templates onto the template plastic, transferring all markings. Cut out on the outermost line.

Tip and Base Note

The triangles are not equilateral triangles, so be certain to mark 'TIP' and 'BASE' on the templates for proper assembly. Once the fabrics are cut, refer to the quilt image for any fussy-cut prints, but it may also be helpful to also mark the tip and/or base on the non-fussy-cut triangles.

CUTTING

WOF = Width of Fabric

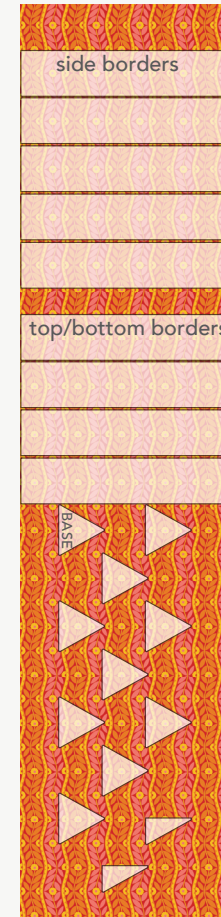
LOF = Length of Fabric

- For best use of fabric, cut pieces in the order given.
- For fussy-cut pieces, starch fabrics and let dry prior to cutting to reduce the possibility of stretching or distorting the bias-cut edges.
- Refer to the Thousand Mountains Quilt image on page 10 for motif placement, and position the templates right side up, on the right side of a right-reading single layer of fabric, over the desired motif. Using a removeable fabric pencil or marker, trace around all the needed fussy-cut pieces on the fabric, then plan out where to place any additional pieces. If the fabric moves while tracing, place a piece of fine grit sandpaper underneath the fabric to hold it secure. Cut the pieces after placement of all pieces has been determined.
- Label cut pieces with fabric letter identifier for easier assembly. See **Tip and Base Note** (shown left).

Fabric A, fussy-cut:

- (5) 9½" x WOF outer side borders, centering the 9½" width along the full flowers in the stripes with the pink leaves
- (4) 9½" x WOF outer top/bottom borders, centering the 9½" width along the full flowers in the stripes with the orange leaves
- (10) Full Triangles, centering each on a full flower motif within the orange-leaf stripe
- (2) Side Triangle 1, with the long side bisecting a full flower motif within the orange-leaf stripe

Fabric A Cutting Diagram

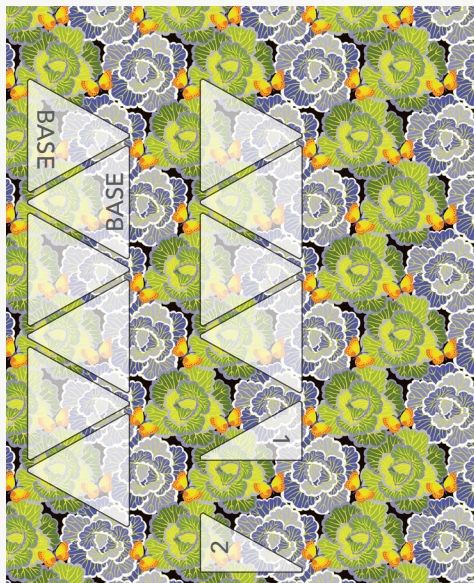


Thousand Mountains Quilt

Fabric B, fussy-cut, referring to the Fabric B Cutting Diagram:

(2) 9½" x LOF; sub-cut (10) Full Triangles, alternating the orientation of every-other triangle, and replicating placement to make two sets of five matching triangles, and (1) each of Side Triangle 1 and 2

Fabric B Cutting Diagram



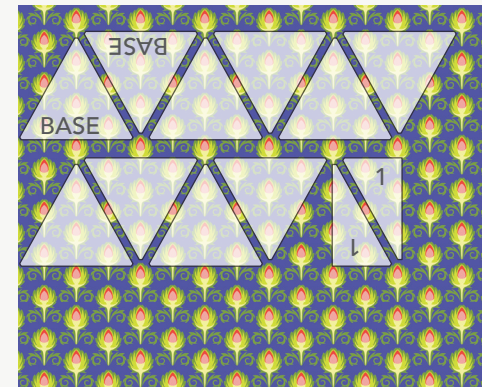
Fabric C, cut:

(8) 1½" x WOF for inner border
(10) 2½" x WOF for binding

Fabric D, fussy-cut:

(10) Full Triangles, centering the triangle over 2 artichoke motifs, and alternating the orientation of every other triangle
(2) Side Triangle 1, with the long straight side vertically bisecting 2 artichoke motifs, one Side Triangle tip up, and one tip down

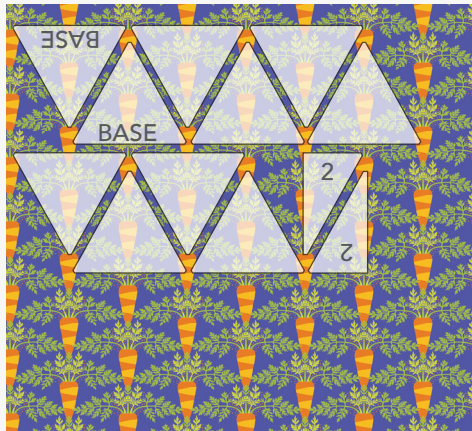
Fabric D Cutting Diagram



Fabric E, fussy-cut:

- (10) Full Triangles, centering the triangle center over a carrot motif, and alternating the orientation of every other triangle
- (2) Side Triangle 2, with the long straight side bisecting one carrot motif, one Side Triangle tip up, and one tip down

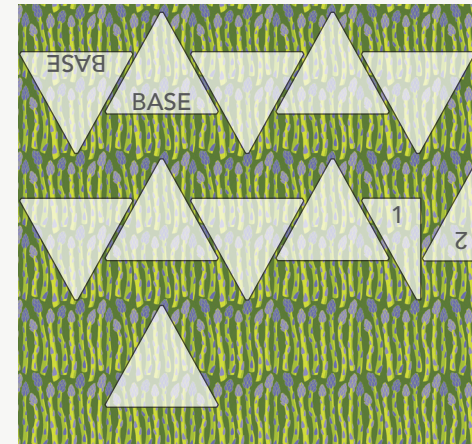
Fabric E Cutting Diagram



Fabric F, fussy-cut:

- (5) Full Triangles, and (1) Side Triangle 1, tip down, with purple asparagus tips running roughly 6½" from tip
- (5) Full Triangles, and (1) Side Triangle 2, tip up, with purple asparagus tips running roughly 1½" above triangle base

Fabric F Cutting Diagram



Fabric G, fussy-cut:

- (5) Full Triangles, tip down, centering over a vine motif
- (1) Side Triangle 1, tip down, bisecting a vine motif

Fabric G Cutting Diagram



Fabric H, cut:

- (5) Full Triangles, and (1) Side Triangle 1; all tip down

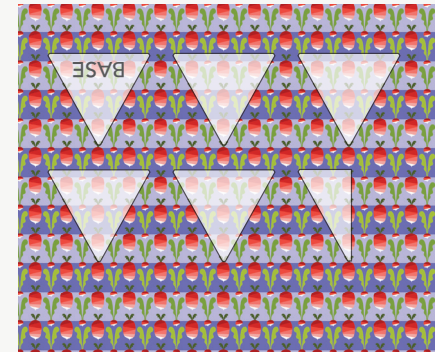
Fabrics I and L, cut from each:

- (5) Full Triangles, and (1) Side Triangle 2; all tip down

Fabric J, fussy-cut:

- (5) Full Triangles, centering on a column of 3 radishes, and (1) Side Triangle 1, bisecting a column of 3 radishes; all tip down

Fabric J Cutting Diagram



Fabric K, cut:

- (5) Full Triangles, and (1) Side Triangle 1, tip up

Fabrics M and N, cut from each:

- (5) Full Triangles, and (1) Side Triangle 2

Fabric O, cut:

- (1) 9½" x WOF; sub-cut
- (4) 9½" squares

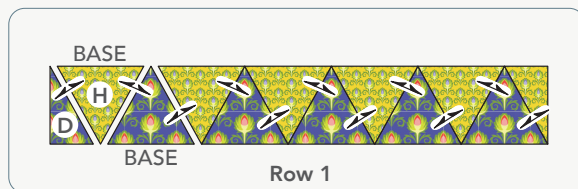
INSTRUCTIONS

Notes:

- All seam allowances are $\frac{1}{4}$ " unless otherwise noted.
- Sew pieces right sides together.
- Press seam allowances open unless otherwise indicated by arrows in the diagrams.

- 1 Arrange the **Fabric H** and **Fabric D** Full Triangles and Side 1 Triangles in a single row (**Fig. 1**). Note that the **Fabric H** triangles will be inverted, with tips down and the base at the top of the row, and that the artichoke motifs on the **Fabric D** triangles should all be oriented right-reading. Sew the Full Triangles and Side Triangles together along adjacent edges to complete Row 1. Press.

Fig. 1



- 2 Repeat step 1 to make Rows 2 through 9, referring to the Thousand Mountains **Quilt image** and **Quilt Layout** diagram (page 10) for triangle placement and motif orientation. Note that all even rows will use Side 2 Triangles and all odd rows will use Side 1 Triangles.

QUILT TOP ASSEMBLY

- 3 Sew the rows together along adjacent edges. Press the seam allowances in one direction.
- 4 Sew the $1\frac{1}{2}$ " **Fabric C** inner borders together end to end using diagonal seams. Press. Cut (2) $1\frac{1}{2}$ " x $81\frac{1}{2}$ " inner side borders. Sew one side border to either long side of the quilt top. Press the seam allowances toward the side borders. Cut (2) $1\frac{1}{2}$ " x $57\frac{1}{2}$ " top/bottom borders. Sew one top/bottom border to the upper edge, and the other to the lower edge of the quilt top. Press the seam allowances toward the top/bottom borders.

- 5 Sew all (5) **Fabric A** 9½" outer side borders together end to end, trimming as needed to match fabric prints. From the continuous strip, cut (2) matching 83½"-long side borders. Referring to the quilt image, and noting the fabric orientation, sew a border to the left and to the right sides of the quilt top. Press the seam allowances toward the outer borders.
- 6 Sew a pair of the remaining **Fabric A** 9½" outer top/bottom borders together end to end, matching fabric prints. Repeat with the final (2) **Fabric A** border strips. Trim each joined strip to make (2) matching 57½"-long top/bottom borders. Sew (1) 9½" **Fabric O** square to each end of the top/bottom borders. Press.
- 7 Sew one outer top/bottom border to the upper edge, and the other to the lower edge of the quilt top. Press the seam allowances toward the outer borders.

FINISHING

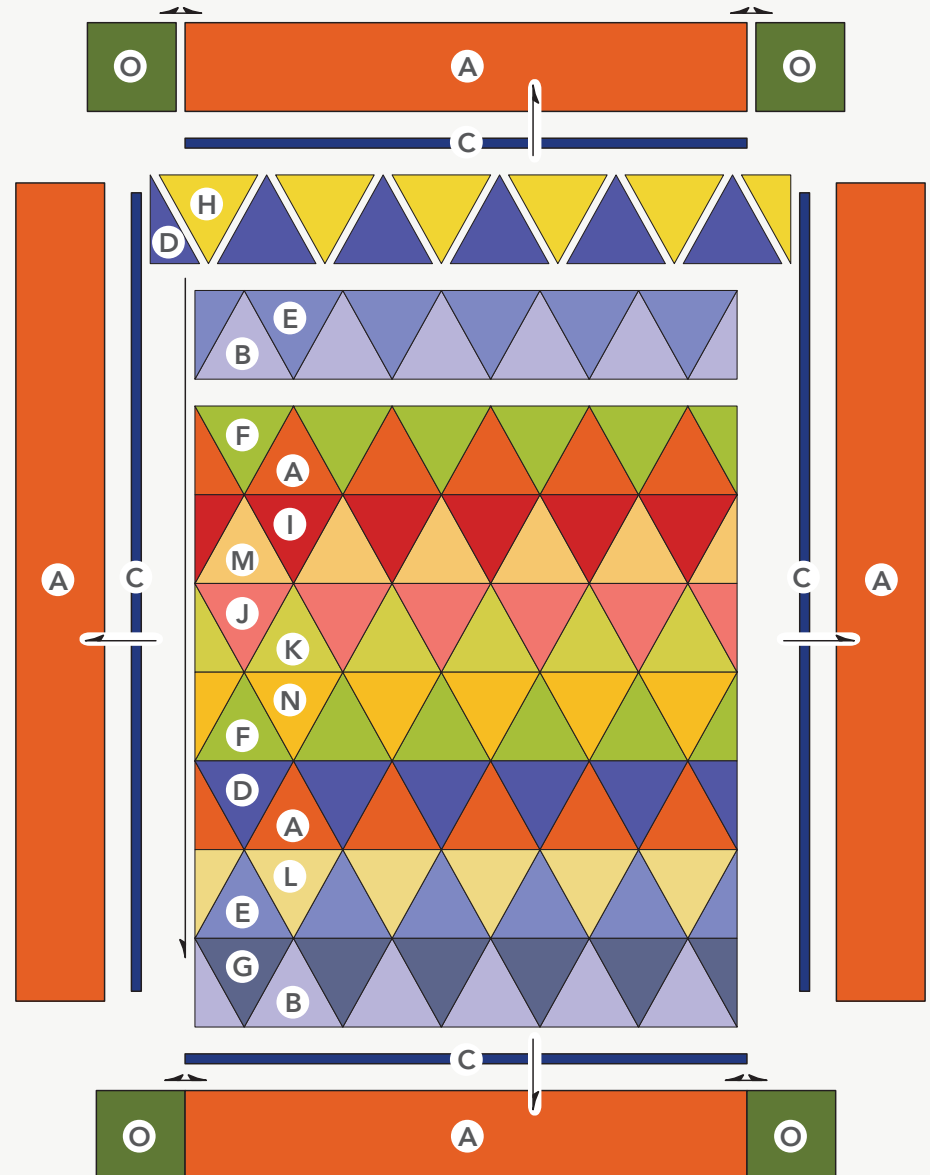
- 8 Sew together the (10) 2½" **Fabric C** binding strips end-to-end using diagonal seams. Press the seams open. Press the binding strip in half wrong sides together.
- 9 Layer the backing (wrong side up), batting, and quilt top (right side up). Baste the layers together and quilt as desired. Trim excess batting and backing even with the quilt top after quilting is completed.
- 10 Leaving an 8" tail of binding, sew binding to top of quilt through all layers matching all raw edges. Miter corners. Stop approximately 12" from where you started. Lay both loose ends of binding flat along quilt edge. Where these two loose ends meet, fold them back on themselves and press to form a crease. Using this crease as your stitching line, sew the two open ends of the binding together right sides together. Trim seam to ¼" and press open. Finish sewing binding to quilt.
- 11 Turn the binding to the back of the quilt and hand stitch in place.

Thousand Mountains Quilt

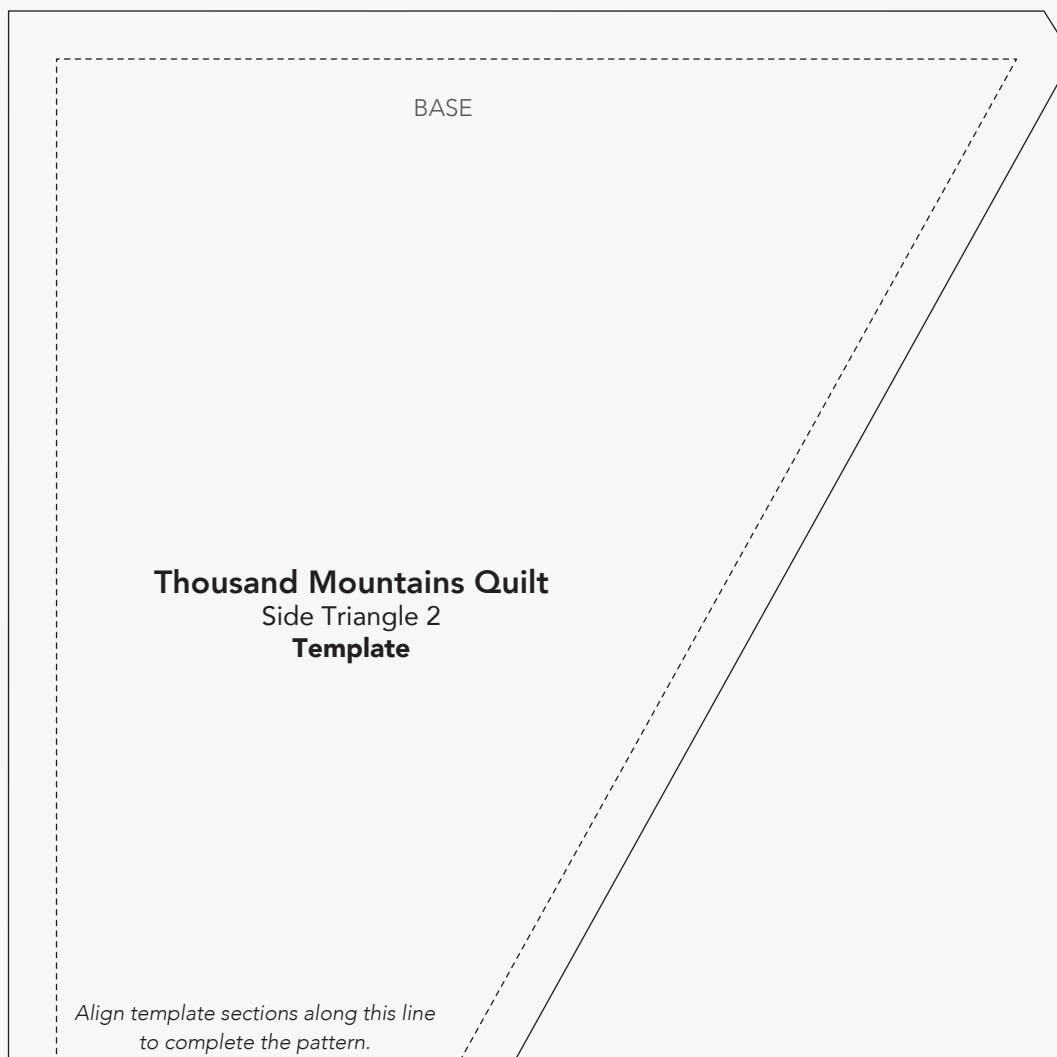
Quilt Image



Quilt Layout



Thousand Mountains Quilt



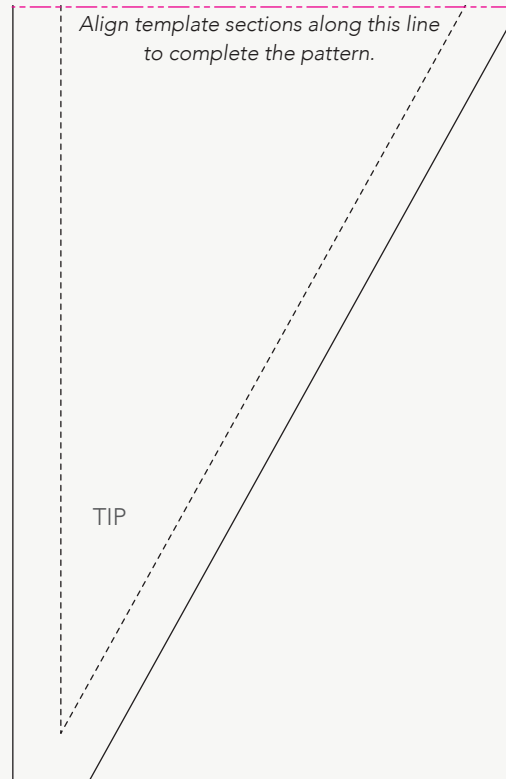
This square should measure 1" x 1" (2.54cm x 2.54cm) when printed.

***** Measure templates before cutting to confirm printing at 100%*****

All possible care has been taken to ensure the accuracy of this pattern. We are not responsible for printing errors or the manner in which individual work varies. Please read the instructions carefully before starting this project. If kitting it is recommended a sample is made to confirm accuracy.



Thousand Mountains Quilt



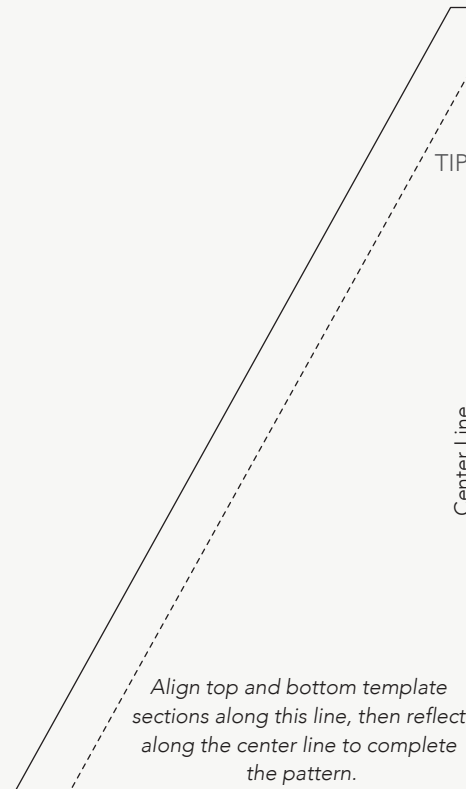
This square should measure 1" x 1" (2.54cm x 2.54cm) when printed.

***** Measure templates before cutting to confirm printing at 100%*****

All possible care has been taken to ensure the accuracy of this pattern. We are not responsible for printing errors or the manner in which individual work varies. Please read the instructions carefully before starting this project. If kitting it is recommended a sample is made to confirm accuracy.



Thousand Mountains Quilt



This square should
measure 1" x 1"
(2.54cm x 2.54cm)
when printed.

***** Measure templates before cutting to confirm printing at 100%*****

All possible care has been taken to ensure the accuracy of this pattern. We are not responsible for printing errors or the manner in which individual work varies. Please read the instructions carefully before starting this project. If kitting it is recommended a sample is made to confirm accuracy.



Thousand Mountains Quilt



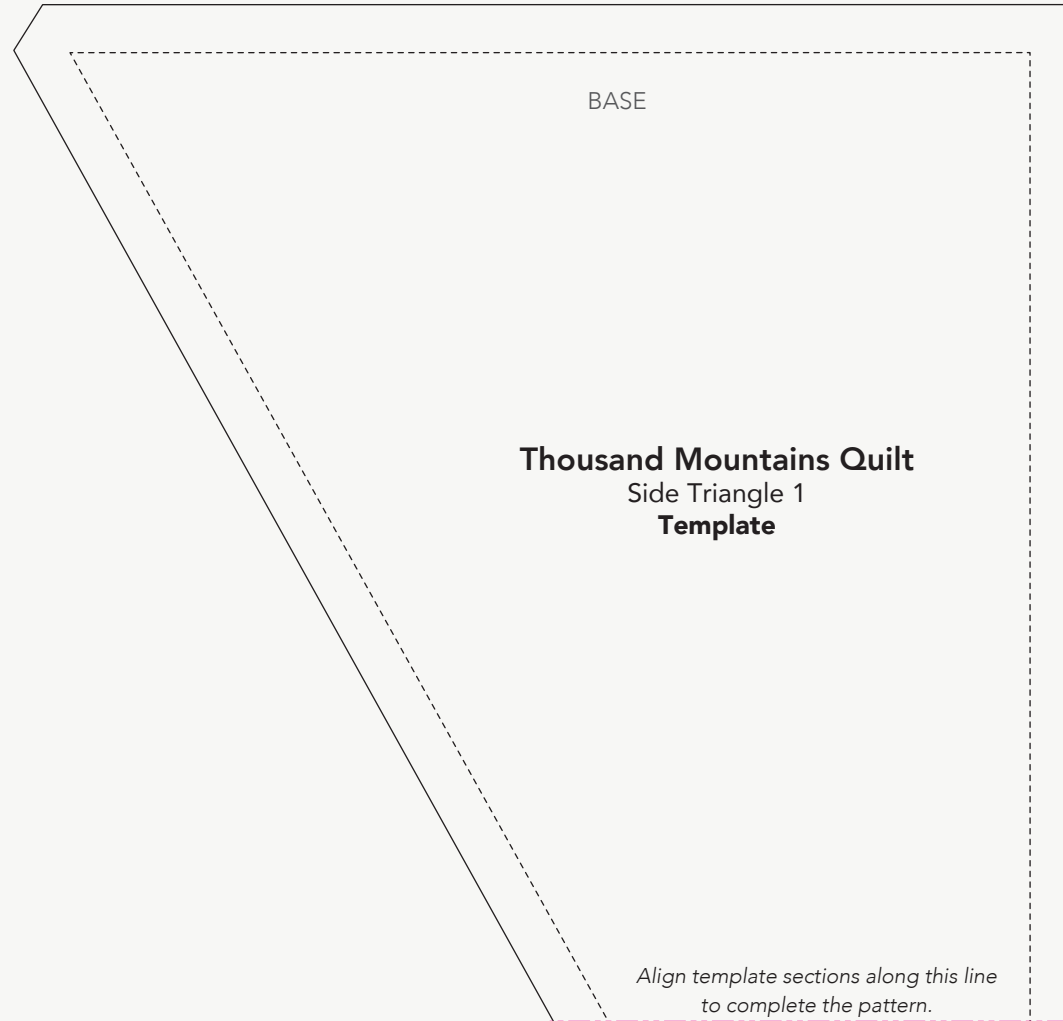
This square should
measure 1" x 1"
(2.54cm x 2.54cm)
when printed.

***** Measure templates before cutting to confirm printing at 100%*****

All possible care has been taken to ensure the accuracy of this pattern. We are not responsible for printing errors or the manner in which individual work varies. Please read the instructions carefully before starting this project. If kitting it is recommended a sample is made to confirm accuracy.



Thousand Mountains Quilt



This square should
measure 1" x 1"
(2.54cm x 2.54cm)
when printed.

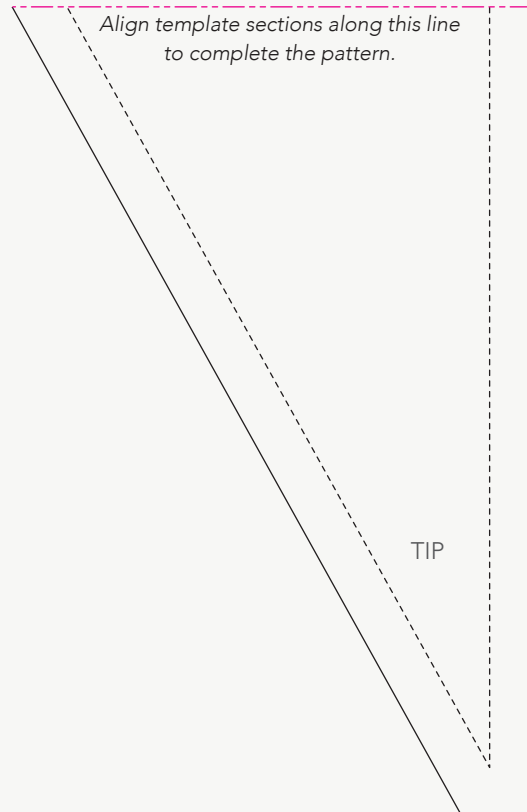
*Align template sections along this line
to complete the pattern.*

***** Measure templates before cutting to confirm printing at 100%*****

All possible care has been taken to ensure the accuracy of this pattern. We are not responsible for printing errors or the manner in which individual work varies. Please read the instructions carefully before starting this project. If kitting it is recommended a sample is made to confirm accuracy.



Thousand Mountains Quilt



This square should
measure 1" x 1"
(2.54cm x 2.54cm)
when printed.

***** Measure templates before cutting to confirm printing at 100%*****

All possible care has been taken to ensure the accuracy of this pattern. We are not responsible for printing errors or the manner in which individual work varies. Please read the instructions carefully before starting this project. If kitting it is recommended a sample is made to confirm accuracy.