



## Vegetable Quilt

**Featuring Vegetable Patch by  
Jane Sassaman**

*How does your garden grow?* With bold prints and big piecework in this fun quilt from Jane Sassaman. Fussy-cutting adds extra movement and captures the over-abundant energy of a garden at its peak!

**Techniques:** Fussy Cutting, Pieced

**Skill Level:** Intermediate

**Finished Size:** 46" x 46" (1.17m x 1.17m)

**Finished Block Sizes:**

12" x 12" (30.48cm x 30.48cm)

12" x 10" (30.48cm x 25.4cm)

**Project designed by:** Jane Sassaman

All possible care has been taken to ensure the accuracy of this pattern. We are not responsible for printing errors or the manner in which individual work varies. Please read the instructions carefully before starting this project. If kitting, it is recommended a sample is made to confirm accuracy.

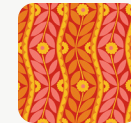


## FABRIC REQUIREMENTS (Tech edited by: Alison M. Schmidt)

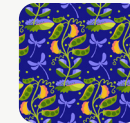
	Design	Color	Item ID	Yardage
A	Brocade	Red	PWJS178.RED*	1 $\frac{5}{8}$ yard (1.49m)
B	Pea	Blue	PWJS185.BLUE	1 $\frac{1}{3}$ yard (1.22m)
C	Cabbage	Peri	PWJS179.PERI	1 $\frac{1}{2}$ yard (1.37m)
D	Asparagus	Green	PWJS177.GREEN	$\frac{7}{8}$ yards (0.80m)
E	Pumpkin	Pink	PWJS186.PINK	$\frac{1}{2}$ yards (0.46m)
F	Tomato	Blue	PWJS189.BLUE	$\frac{1}{3}$ yards (0.31m)
G	Check	Green	PWJS182.GREEN	$\frac{1}{4}$ yards (0.23m)

\* includes binding

## Swatches



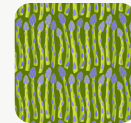
A



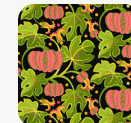
B



C



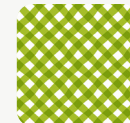
D



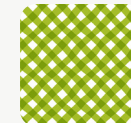
E



F



G



44"

## Backing (Purchased Separately)

**44" (1.12m) wide**

Check	Green	PWJS182.GREEN	2 $\frac{1}{4}$ yards (2.06m)
-------	-------	---------------	-------------------------------

## ADDITIONAL REQUIREMENTS

- 100% Cotton Thread
- 54" x 54" (1.37m x 1.37m) batting
- **Optional:** Spray starch or starch alternative, template plastic, removable fabric marker



## PREPARATION

Print (1) each of the Left and Right Star Point Triangle template patterns and (2) of the Center Triangle template pattern on pages 8-13. Tape the template sections together along the marked lines. If using template plastic, trace the templates onto the template plastic, transferring all markings. Cut out on the outermost line.

## CUTTING

WOF = Width of Fabric

LOF = Length of Fabric

- For best use of fabric, cut pieces in the order given.
- For fussy-cut pieces, starch fabrics and let dry prior to cutting to reduce the possibility of stretching or distorting the bias-cut edges.
- Refer to the Vegetable Quilt image on page 1 for motif placement, and position the templates right side up, on the right side of a single layer of fabric, over the desired motif, aligning motif guidelines where applicable. Using a removeable fabric pencil or marker, trace around all the needed fussy-cut pieces on the fabric, then plan out where to place any additional pieces. If the fabric moves while tracing, place a piece of fine grit sandpaper underneath the fabric to hold it secure. Cut the pieces after placement of all pieces has been determined.
- Label cut pieces with fabric letter identifier for easier assembly.

**Fabric A, fussy cut, referring to Fabric A Cutting Diagram:**

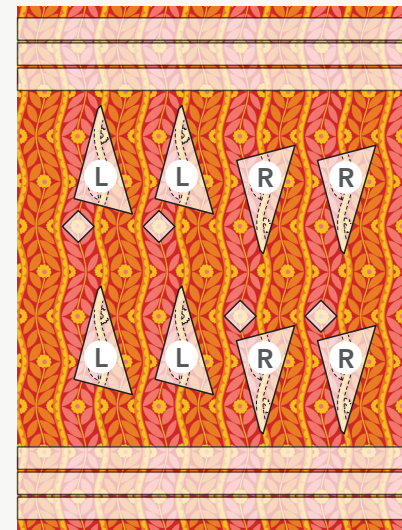
(4) Left and (4) Right Star Point Triangles, aligning the template guidelines with the fabric motifs

(4) 2½" on-point squares, centering on a complete yellow bloom on the red background, with the yellow vine running diagonally, corner to corner

*From remaining yardage, cut:*

(6) 2½" x WOF for binding

**Fabric A Cutting Diagram**



Template placement may vary depending on fabric yardage.

## Fabric B, fussy cut:

- (4) 10½" identical on-point squares, placing the pea motif corner to corner along one diagonal
- (4) 5½" identical on-point squares, placing the same section of the pea motif corner to corner along one diagonal

### Fabric B Cutting Diagram



Placement may vary  
depending on fabric yardage.

## Fabric C, fussy cut:

- (4) 5½" x LOF for outer borders, with one long edge of each border falling within the green cabbages, and the opposite long edge falling within the blue cabbages

## Fabric D, fussy cut:

- (4) 2½" x WOF, centering the strip within the green stalks of the motif, and avoiding the purple tops; for the middle borders

## Fabric E, fussy cut:

- (1) 10½" center square, showcasing the triple-pumpkin motif shown in the quilt image

## Fabric F, cut:

- (4) Center Triangles, using the Center Triangle template and alternating the triangle orientation for every other cut

## Fabric G, fussy cut:

- (2) 1½" x WOF, centering the darker green on-point squares within the strip; subcut
  - (2) 1½" x 10½" top/bottom inner borders
  - (2) 1½" x 12½" side inner borders

## INSTRUCTIONS

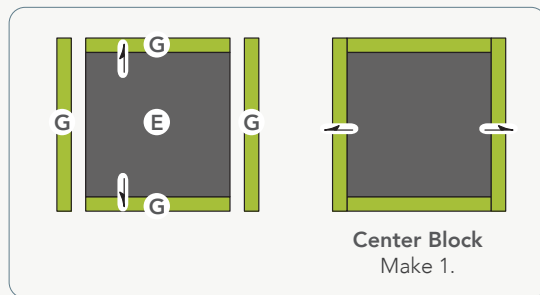
### Notes:

- All seam allowances are  $\frac{1}{4}$ " unless otherwise noted.
- Sew pieces right sides together.
- Press seam allowances open unless otherwise indicated by arrows in the diagrams.

### Block Construction

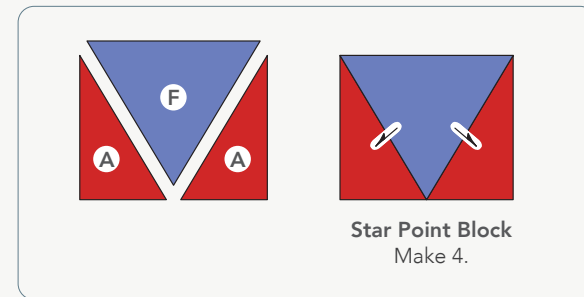
- 1 Sew the long edge of (1) **Fabric G**  $1\frac{1}{2}$ " x  $10\frac{1}{2}$ " inner border to the upper edge of the **Fabric E**  $10\frac{1}{2}$ " center square. Sew the remaining **Fabric G**  $1\frac{1}{2}$ " x  $10\frac{1}{2}$ " inner border to the lower edge of the square. Press.
- 2 Sew (1) **Fabric G**  $1\frac{1}{2}$ " x  $12\frac{1}{2}$ " inner border to each remaining side of the center square to complete the Center Block (**Fig. 1**). Press.

Fig. 1



- 3 Arrange (1) **Fabric A** Left and (1) **Fabric A** Right Star Point on opposite sides of a **Fabric F** Center Triangle, as shown (**Fig. 2**). Sew the long angled edge of each Star Point to the adjacent long angled edge of the Center Triangle. Press. Repeat to make a total of (4) Star Point Blocks.

Fig. 2



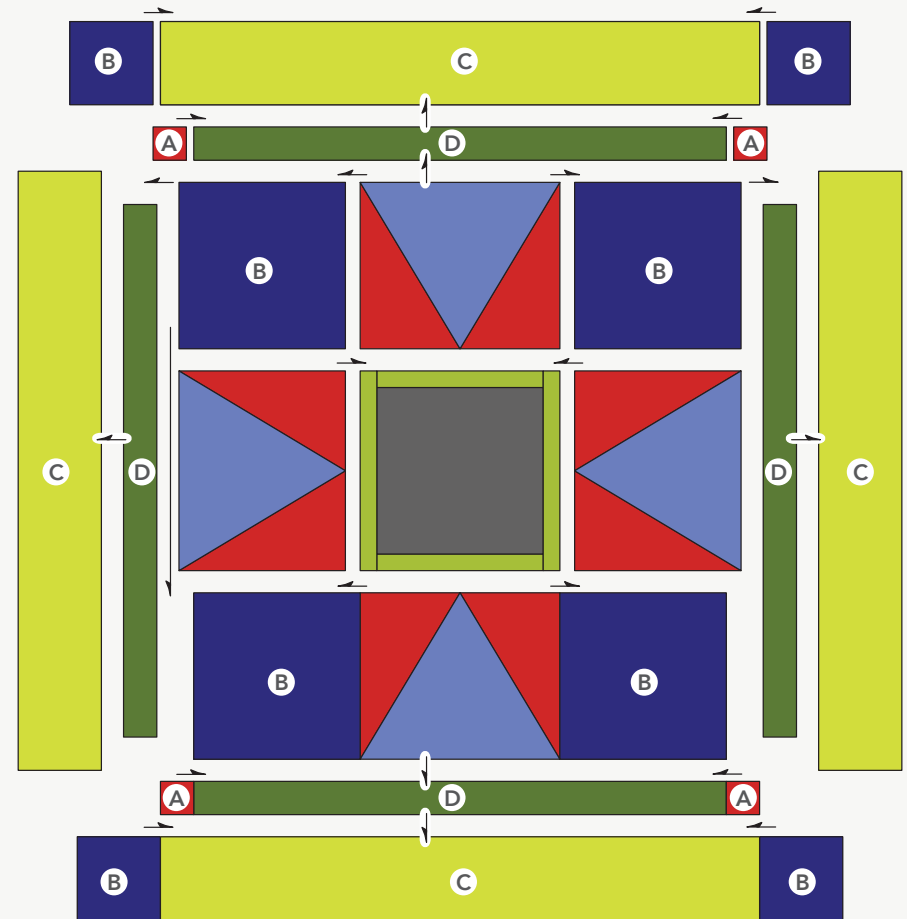
## QUILT TOP ASSEMBLY

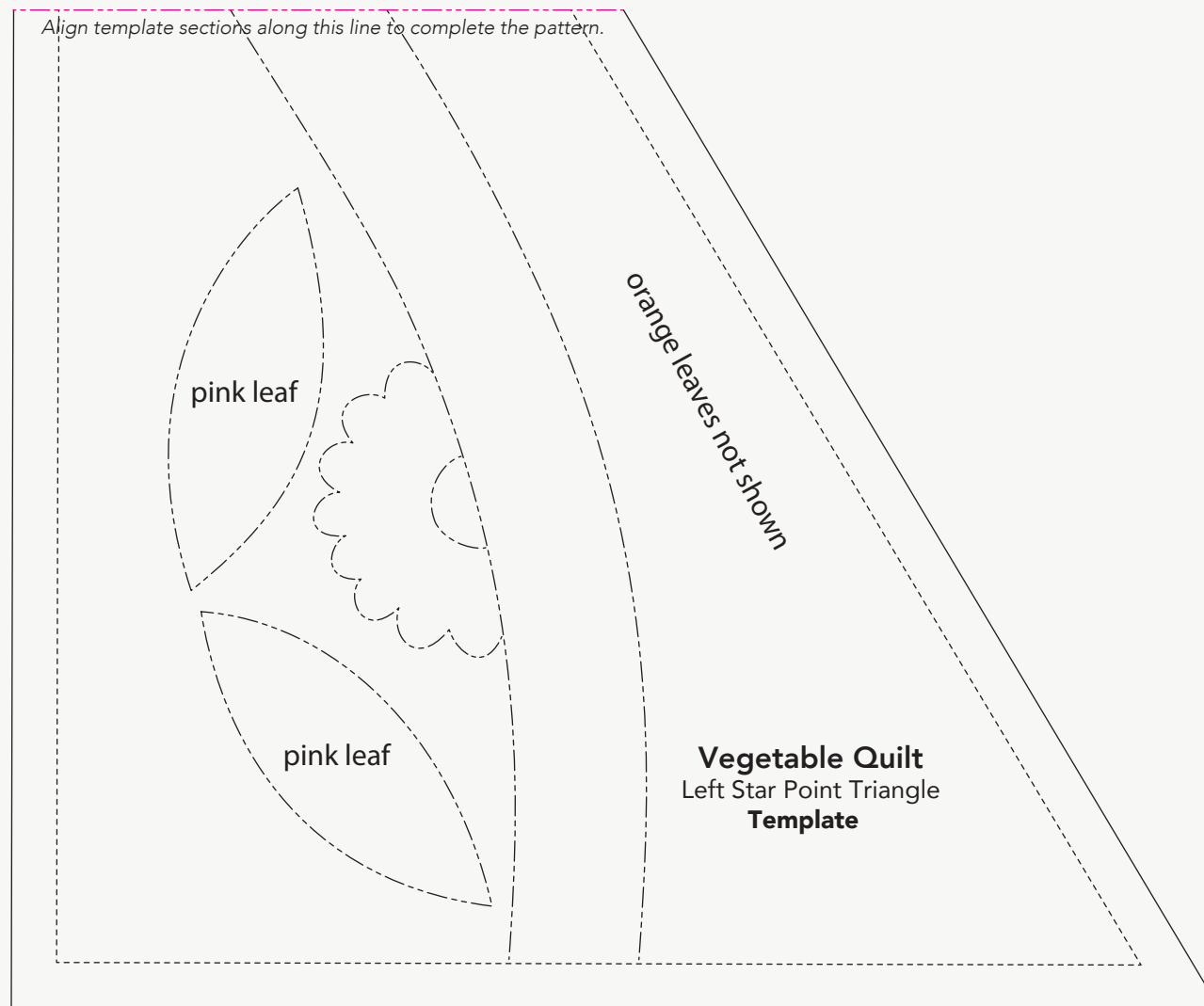
- 4 Referring to the Vegetable quilt image on page 1 and **Quilt Layout** diagram (page 7) for both fabric and block orientation, arrange the fussy-cut **Fabric B** 10½" squares, Star Point Blocks, and the Center Block in (3) rows of (3) elements each.
- 5 Sew the blocks and squares together into rows.
- 6 Sew the rows together, nesting seam allowances. Press all seams in the same direction to complete the quilt center (32½" square including seam allowances).
- 7 Trim each fussy-cut **Fabric D** middle border to 32½" long (or the size of your quilt center). Sew a **Fabric D** middle border to the left and right sides of the quilt center.
- 8 Noting the orientation of the flower motif, sew a **Fabric A** 2½" square to each end of the (2) remaining **Fabric D** middle borders. Press the seam allowances away from the squares. Sew one middle border to the upper edge, and the other to the lower edge of the quilt center. Press the seam allowances toward the borders.
- 9 'Audition' the **Fabric C** outer borders by placing the borders along the outer edges of the quilt center, with the green cabbages toward the center of the quilt. Shift each border as needed to create a pleasing 'frame' around the quilt center. For the sample quilt image, we made sure each outer border started and stopped within a green cabbage motif. When satisfied with the placement, trim each border to 5½" x 36½".
- 10 Sew an outer border to the left and right sides of the quilt center. Press the seam allowances toward the outer borders.
- 11 Noting the orientation of the fabric motifs, sew a **Fabric B** 5½" square to each short end of the remaining outer borders. Press the seam allowances away from the squares. Sew one outer border to the upper edge, and the other to the lower edge of the quilt center to complete the quilt top. Press the seam allowances toward the outer borders.

## FINISHING

- 12** Sew together all the 2½" **Fabric A** binding strips end-to-end using diagonal seams. Press the seams open. Press the binding strip in half wrong sides together.
- 13** Layer the backing (wrong side up), batting, and quilt top (right side up). Baste the layers together and quilt as desired. Trim excess batting and backing even with the quilt top after quilting is completed.
- 14** Leaving an 8" tail of binding, sew binding to top of quilt through all layers matching all raw edges. Miter corners. Stop approximately 12" from where you started. Lay both loose ends of binding flat along quilt edge. Where these two loose ends meet, fold them back on themselves and press to form a crease. Using this crease as your stitching line, sew the two open ends of the binding together right sides together. Trim seam to ¼" and press open. Finish sewing binding to quilt.
- 15** Turn the binding to the back of the quilt and hand stitch in place.

Quilt Layout



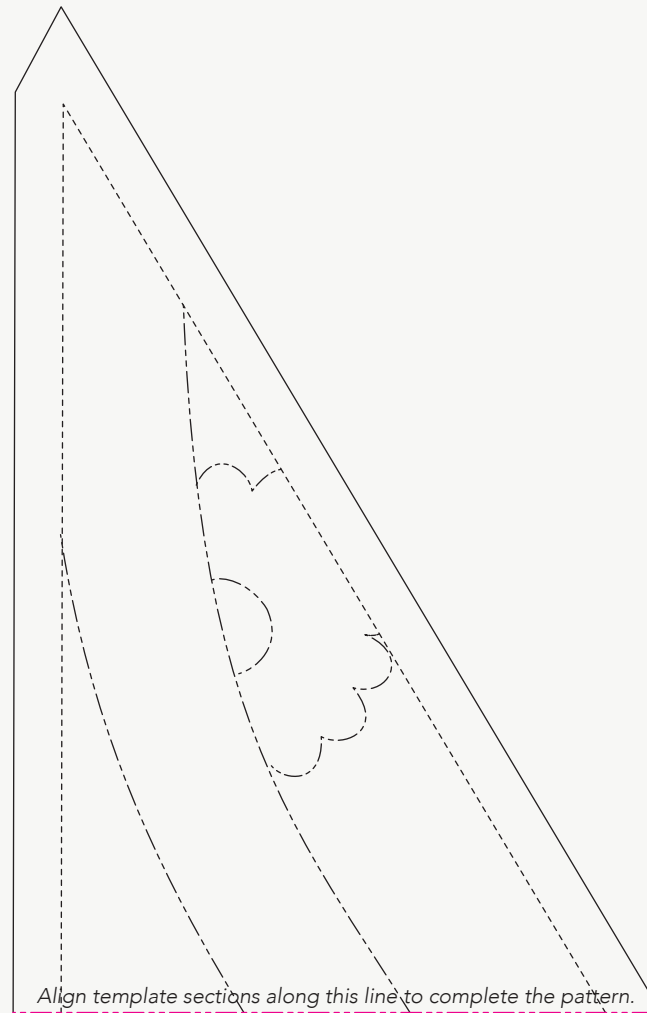


This square should  
measure 1" x 1"  
(2.54cm x 2.54cm)  
when printed.

**\*\*\* Measure templates before cutting to confirm printing at 100%\*\*\***

All possible care has been taken to ensure the accuracy of this pattern. We are not responsible for printing errors or the manner in which individual work varies. Please read the instructions carefully before starting this project. If kitting it is recommended a sample is made to confirm accuracy.

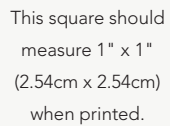




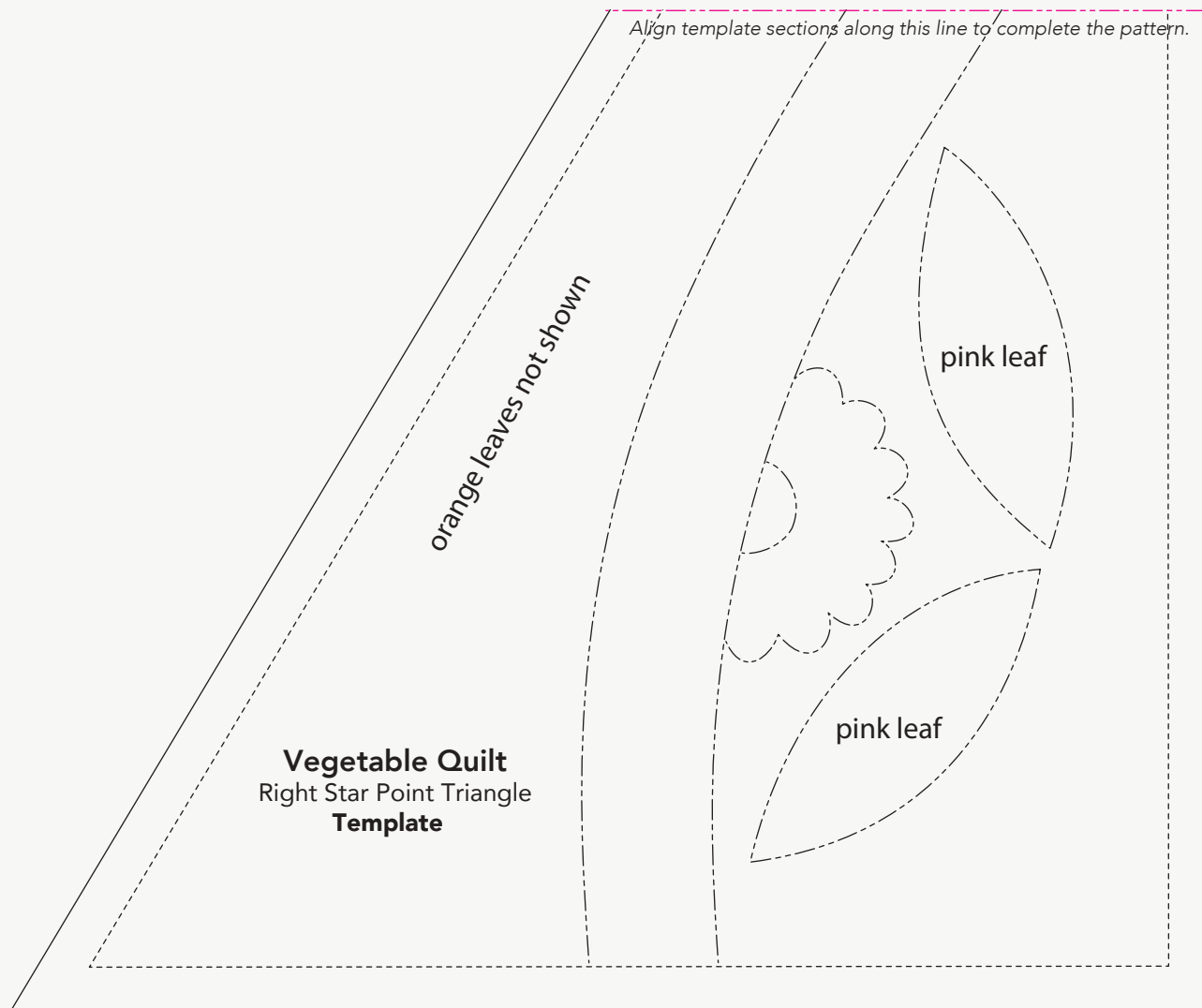
This square should  
measure 1" x 1"  
(2.54cm x 2.54cm)  
when printed.

**\*\*\* Measure templates before cutting to confirm printing at 100%\*\*\***

All possible care has been taken to ensure the accuracy of this pattern. We are not responsible for printing errors or the manner in which individual work varies. Please read the instructions carefully before starting this project. If kitting it is recommended a sample is made to confirm accuracy.



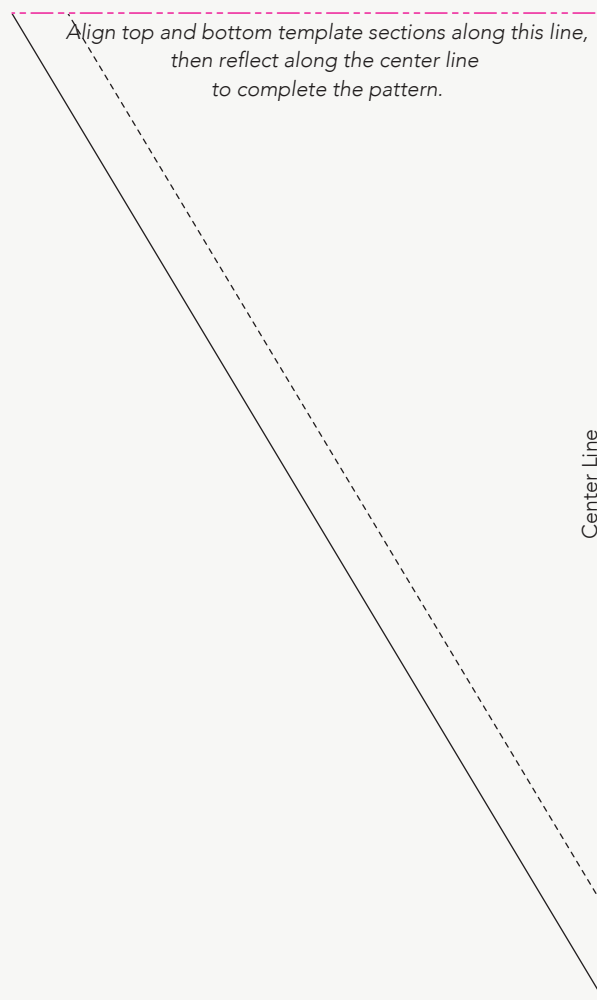
All possible care has been taken to ensure the accuracy of this pattern. We are not responsible for printing errors or the manner in which individual work varies. Please read the instructions carefully before starting this project. If kitting it is recommended a sample is made to confirm accuracy.



This square should  
measure 1" x 1"  
(2.54cm x 2.54cm)  
when printed.

**\*\*\* Measure templates before cutting to confirm printing at 100%\*\*\***

All possible care has been taken to ensure the accuracy of this pattern. We are not responsible for printing errors or the manner in which individual work varies. Please read the instructions carefully before starting this project. If kitting it is recommended a sample is made to confirm accuracy.



This square should  
measure 1" x 1"  
(2.54cm x 2.54cm)  
when printed.

**\*\*\* Measure templates before cutting to confirm printing at 100%\*\*\***

All possible care has been taken to ensure the accuracy of this pattern. We are not responsible for printing errors or the manner in which individual work varies. Please read the instructions carefully before starting this project. If kitting it is recommended a sample is made to confirm accuracy.



This square should  
measure 1" x 1"  
(2.54cm x 2.54cm)  
when printed.

**\*\*\* Measure templates before cutting to confirm printing at 100%\*\*\***

All possible care has been taken to ensure the accuracy of this pattern. We are not responsible for printing errors or the manner in which individual work varies. Please read the instructions carefully before starting this project. If kitting it is recommended a sample is made to confirm accuracy.