

*Free Spirit* 

# Love for All Quilt

Featuring Love in the Wild by Katy Tanis

Technique: Pieced

Skill Level: Beginner

Finished Size: 44" x 58" (1.12m x 1.47m)

Project designed by: Stacey Day

Notes:

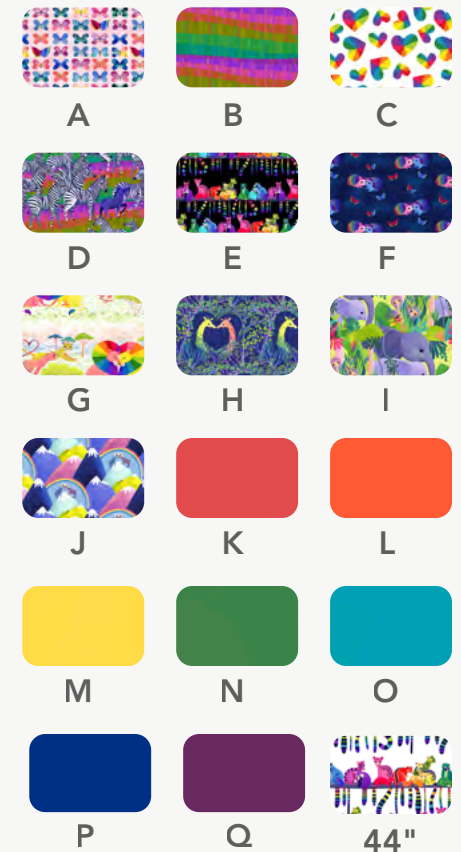
- Due to variations in fussy cutting, finished quilts may not appear identical to the cover quilt image.
- All possible care has been taken to ensure the accuracy of this pattern. We are not responsible for printing errors or the manner in which individual work varies. Please read the instructions carefully before starting this project. If kitting, it is recommended a sample is made to confirm accuracy.

## FABRIC REQUIREMENTS (Tech edited by: Julie Kentner)

	Design	Color	Item ID	Yardage
A	Sweet Wing Love	Pink	PWKT035.XPINK	¼ yards (0.23m)
B	Love Stripe	Multi	PWKT036.XMULTI*	½ yards (0.46m)
C	Love Everywhere	White	PWKT037.XWHITE	⅜ yards (0.34m)
D	Love in the Grasslands	Multi	PWKT038.XMULTI	¼ yards (0.23m)
E	Ringtail Love Night	Black	PWKT039.XBLACK	¼ yards (0.23m)
F	Love Bright	Navy	PWKT041.XNAVY	¼ yards (0.23m)
G	Love in the Savanna	Multi	PWKT042.XMULTI	¼ yards (0.23m)
H	Love in the Trees	Blue	PWKT043.XBLUE	¼ yards (0.23m)
I	Love in the Jungle	Green	PWKT044.XGREEN	¼ yards (0.23m)
J	Love on the Snow Top	Multi	PWKT045.XMULTI	¼ yards (0.23m)
K	Designer Essential Solid	Cajun	CSFSESS.CAJUN	⅛ yards (0.11m)
L	Designer Essential Solid	Snapdragon	CSFSESS.SNAPDRAGON	⅛ yards (0.11m)
M	Designer Essential Solid	Yellow	CSFSESS.YELLO	⅛ yards (0.11m)
N	Designer Essential Solid	Grass	CSFSESS.GRASS	⅛ yards (0.11m)
O	Designer Essential Solid	Parrot Blue	CSFSESS.PARBL	⅛ yards (0.11m)
P	Designer Essential Solid	Sapphire	CSFSESS.SAPPH	⅛ yards (0.11m)
Q	Designer Essential Solid	Tanzanite	CSFSESS.TANZANITE	⅛ yards (0.11m)

\* includes binding

## Swatches



## Backing (Purchased Separately)

**44" (1.12m) wide**

Ringtail Love Day	White	PWKT040.XWHITE	3¼ yards (2.97m)
-------------------	-------	----------------	------------------

## ADDITIONAL REQUIREMENTS

- 100% Cotton Thread
- 52" x 66" (1.32m x 1.68m) Batting

## CUTTING

WOF = Width of Fabric

WOB = Width of Bias

Label cut pieces with fabric letter identifier for easier assembly.

**Fabrics A, D-J, from each, cut:**

(1) 5½" x 40½" fussy cut with the motif centered in the strip

**Fabric B, cut:**

(7) 2½" x WOB, enough to make 214" of bias binding

**Fabric C, cut:**

(5) 2½" x WOF; sew together end to end and cut

(2) 2½" x 44½"

(2) 2½" x 54½"

**Fabrics K-Q, from each, cut:**

(1) 2½" x 40½"

## TOP ASSEMBLY

All seams are sewn with a ¼" (0.64cm) seam allowance, right sides together (RST), with neutral or coordinating thread. Press seams in the direction of arrows show in the **Quilt Layout Diagram** (page 5).

- 1 Fold each 5½" x 40½" **Fabric A, D-J** strip and each 2½" x 40½" **Fabric K-Q** strip in half lengthwise to find the center of each strip. Mark with a pin or by finger pressing gently.
- 2 Referring to the **Quilt Layout Diagram** (page 5), sew the 5½" x 40½" and the 2½" x 40½" strips together in the order shown, matching ends and centers. Take care to not stretch the strips as you sew and that the motifs are all oriented correctly. Press seams towards the 2½" **Fabric K-Q** strips. Quilt top should measure 40½" x 54½".

If the quilt top is shorter than the 2½" x 54½" **Fabric C** strips, trim strips to match the length of your quilt top before moving to the next step.

- 3 Sew (1) 2½" x 54½" **Fabric C** (or your matching length) to the left and right sides of the quilt top, matching ends and centers. Press towards **Fabric C**. Sew (1) **Fabric C** 2½" x 44½" to the top and bottom of the quilt top, matching ends and centers. Press towards **Fabric C**.



## FINISHING

- 4 Sew the (7) 2½" x WOB **Fabric B** binding strips end to end using diagonal seams. Press seams open then press the binding strip in half, wrong sides together, and set aside until quilt is ready for binding.
- 5 Once the top is complete it is ready for quilting! Quilts can be sent out for longarm quilting or you can quilt it yourself. If you are sending the quilt out, it is important to discuss backing and batting requirements with the quilter to ensure they have everything needed to properly finish the quilt.
- 6 If quilting yourself and using 44" fabric for backing, choose your favorite method for piecing (taking time to remove selvages), then layer, baste and quilt. Once finished, trim excess batting and backing and bind according to your favorite method.
- 7 To complete binding by hand, it must first be machine sewn to the quilt top. Leaving an 8" tail of binding, sew binding to top of quilt through all layers, matching raw edges. Miter corners. Stop approximately 12" from where you started. Lay both loose ends of binding flat along quilt edge. Where the two loose ends meet, fold each side back on themselves and press to form a crease. Using this crease as your stitching line, sew the two open ends of the binding together right sides together. Trim seam to ¼" and press seam open. The binding will naturally fold, wrong sides together, and lay along the quilt edge. Finish sewing binding to quilt. Turn and press the binding to the back of the quilt and hand stitch in place.
- 8 If machine binding, complete the steps above only attach the binding to the BACK of the quilt, turn and press to the front of the quilt and machine stitch in place.

## Quilt Layout

