



Featuring Vibrant Botanica by Kitty McCall

# All Heart Quilt

Finished Size: 63" x 72" (1.60m x 1.82m)

Project designed by Lisa Alley - Bear Hug Quiltworks

Purchase pattern at [bearhugquiltworks.com](http://bearhugquiltworks.com)

Technique: Pieced | Skill Level: Advanced Beginner

## Fabric Requirements

DESIGN	COLOR	ITEM ID	YARDAGE
(A) Summer Garden	MULTI	PWKC001.MULTI	¼ yards (0.23m)
(B) A Thousand Flowers	CITRUS	PWKC002.CITRUS	¼ yards (0.23m)
(C) Flower Garden	JUNGLE	PWKC003.JUNGLE	¼ yards (0.23m)
(D) Jungle Leaves	EARTHY	PWKC004.EARTHY	¼ yards (0.23m)
(E) Overgrown	PASTEL	PWKC005.PASTEL	¼ yards (0.23m)
(F) Plumeria	NIGHT	PWKC006.NIGHT	¼ yards (0.23m)
(G) Abstract Prism	SORBET	PWKC007.SORBET	¼ yards (0.23m)
(H) Big Daisies	VERDENT	PWKC008.VERDENT	¼ yards (0.23m)
(I) Island Blooms	SUNSHINE	PWKC009.SUNSHINE	¼ yards (0.23m)
(J) Daisy Foliage	OCEAN	PWKC010.OCEAN	¼ yards (0.23m)
(K) Mini Daisies	SCARLET	PWKC011.SCARLET	¼ yards (0.23m)
(L) Striped Horizon	FRESHMINT	PWKC012.FRESHMINT*	⅝ yards (0.57m)
(M) Designer Essential Solid	WHIMSY	CSFSESS.WHIMSY	3⅓ yards (3.05m)

\* includes binding

## Backing (Purchased Separately)

**44" (1.12m) wide**

A Thousand Flowers	CITRUS	PWKC002.CITRUS	4⅓ yards (3.96m)
--------------------	--------	----------------	------------------



(A)



(B)



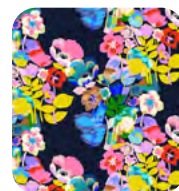
(C)



(D)



(E)



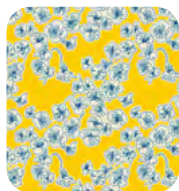
(F)



(G)



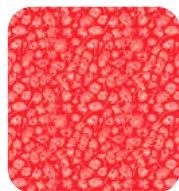
(H)



(I)



(J)



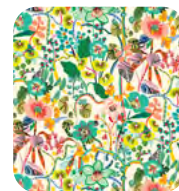
(K)



(L)



(M)



Backing  
44"

*If kitting, refer to the final pattern for yardage amounts,  
it is recommended that a sample is made to confirm accuracy.*