



# Silk Road Quilt

Featuring Nocturnal Creatures by  
Maria Matos

Technique: Pieced

Skill Level: Advanced Beginner

Finished Size of Project:

74 $\frac{1}{2}$ " x 74 $\frac{1}{2}$ " (1.89m x 1.89m)

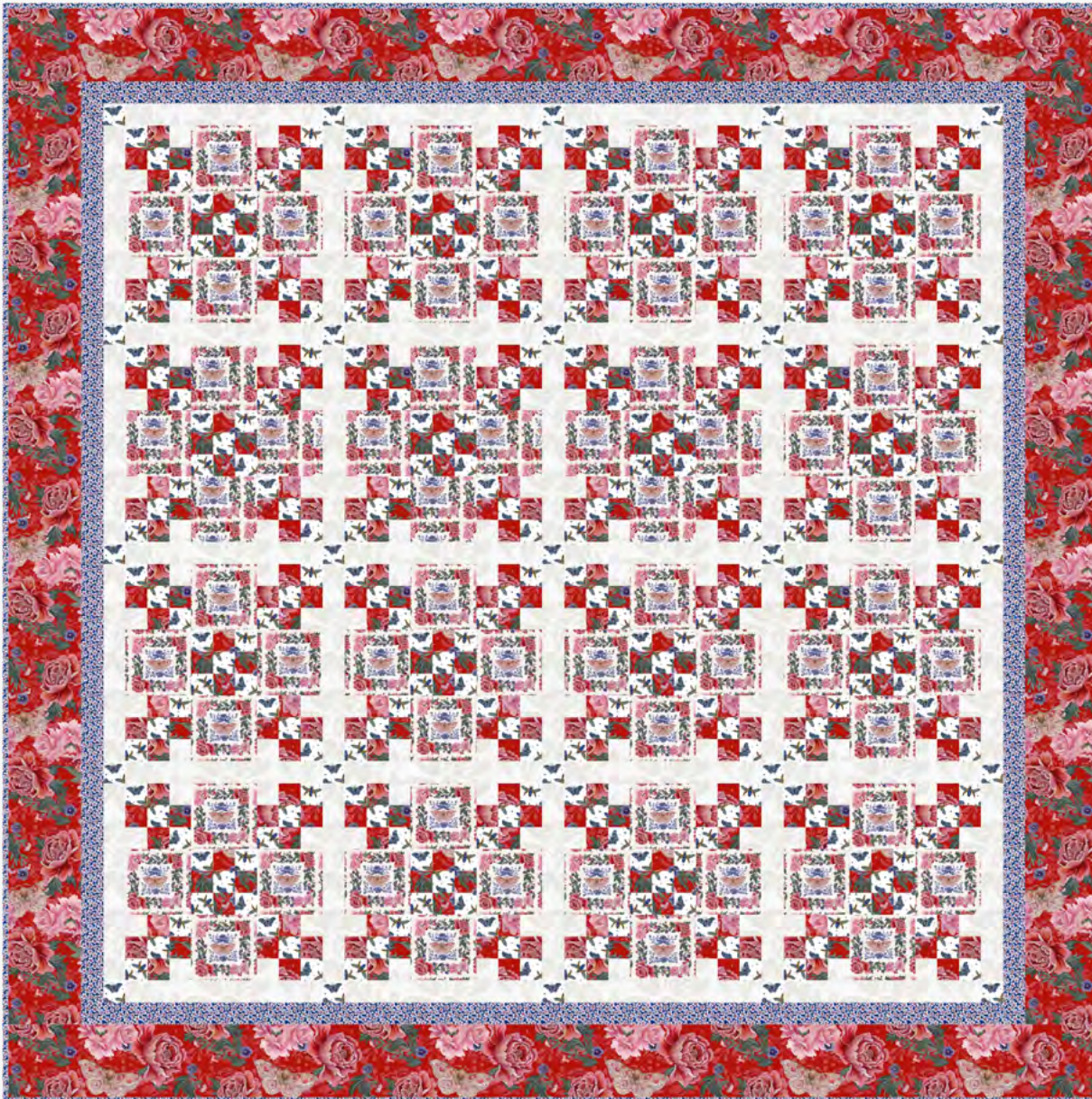
Finished Block Size:

13 $\frac{1}{2}$ " x 13 $\frac{1}{2}$ " (34.29cm x 34.29cm)

Project designed by: Stacey Day

Notes:

- Cover image is a digital rendering. Due to individual cutting styles, finished quilt tops may vary in appearance.
- All possible care has been taken to ensure the accuracy of this pattern. We are not responsible for printing errors or the manner in which individual work varies. Please read the instructions carefully before starting this project. If kitting, it is recommended a sample is made to confirm accuracy.



## FABRIC REQUIREMENTS (Tech edited by: Julie Kentner)

	Design	Color	Item ID	Yardage
A	Blossom Moth	Red	PWMM002.RED	2¼ yards (2.06m)
B	Silk Moth	White	PWMM005.WHITE	4⅝ yards (4.23m)
C	Flying Wonders	Blue	PWMM011.BLUE	1⅞ yards (1.03m)
D	Cherry Blossoms	Blue	PWMM012.BLUE*	1⅞ yards (1.03m)
E	Smooth	Mellow	PWSK031.MELLOW	1⅝ yards (1.49m)

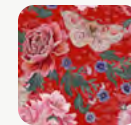
\* includes binding

## Backing (Purchased Separately)

**44" (1.12m) wide**

Spring	White	PWMM009.WHITE	5 yards (4.57m)
--------	-------	---------------	-----------------

## Swatches



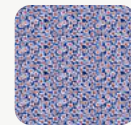
A



B



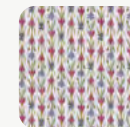
C



D



E



44"

## ADDITIONAL REQUIREMENTS

- 100% cotton thread in colors to match
- 83" x 83" (2.11m x 2.11m) Batting

## CUTTING

### Fabric A, cut:

(17) 2" x WOF

(7) 5½" x WOF; remove selvages and sew together end to end and sub-cut

(2) 5½" x 65"

(2) 5½" x 75"

### Fabric B, cut:

(64) 5" squares, fussy cut around the motif

### Fabric C, cut:

(15) 2" x WOF

(2) 2" x WOF; sub-cut

(25) 2" squares

### Fabric D, cut:

(9) 2½" x WOF (binding)

(7) 2" x WOF; remove selvages and sew together end to end and sub-cut

(2) 2" x 62"

(2) 2" x 65"

### Fabric E, cut:

(7) 2" x WOF

(20) 2" x WOF; sub-cut

(40) 2" x 14"



## SEWING

All seam allowances are  $\frac{1}{4}$ " (0.64cm) and pieces are sewn right sides together (RST) with neutral or coordinating thread. Press seams as directed by pattern arrows.

- 1 Sew (1) each 2" x WOF **Fabric A**, **Fabric C**, and **Fabric E** strip together in **C-A-E** order to make (1) strip set. Repeat to make (7) strip sets. Sub-cut (128) 2" x 5" pieces and set aside as **Unit A**. (Fig. 1)
- 2 Sew (2) 2" x WOF **Fabric A** and (1) 2" x WOF **Fabric C** together in **A-C-A** order to make (1) strip set. Repeat to make (4) strip sets. Sub-cut (80) 2" x 5" pieces and set aside as **Unit B**
- 3 Sew (1) 2" x WOF **Fabric A** and (2) **Fabric C** together in **C-A-C** order to make (1) strip set. Repeat to make (2) strip sets. Sub-cut (32) 2" x 5" pieces and set aside as **Unit C**.
- 4 Sew (1) **Unit A** to either side of (1) **Unit B**, as shown (note orientation) to make **Unit D**. Repeat to make (64) **Unit D**. (Fig. 2)
- 5 Sew (1) **Unit C** to either side of (1) **Unit B** as shown to make **Unit E**. Repeat to make (16) **Unit E**.

Fig. 1

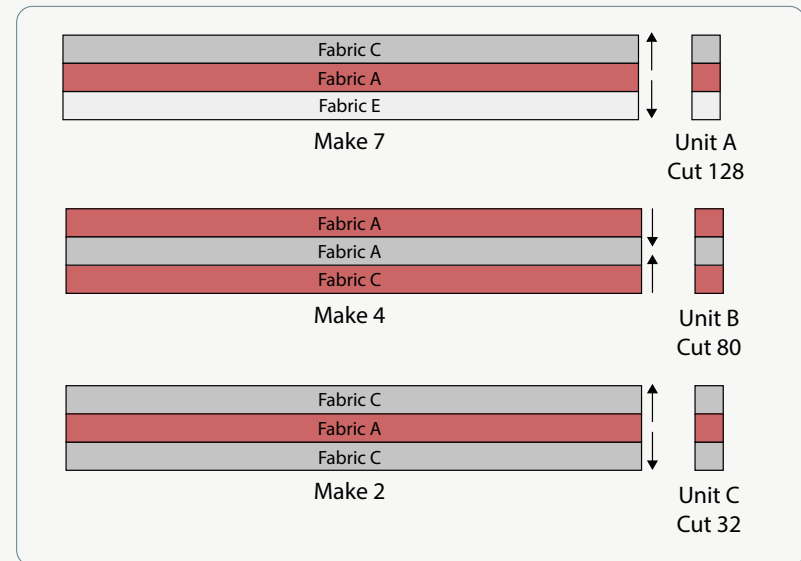
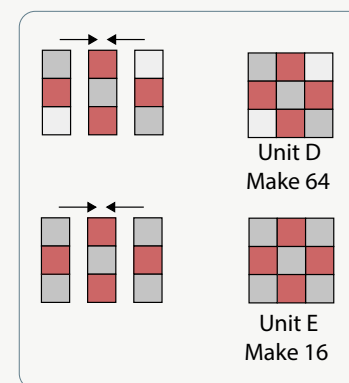


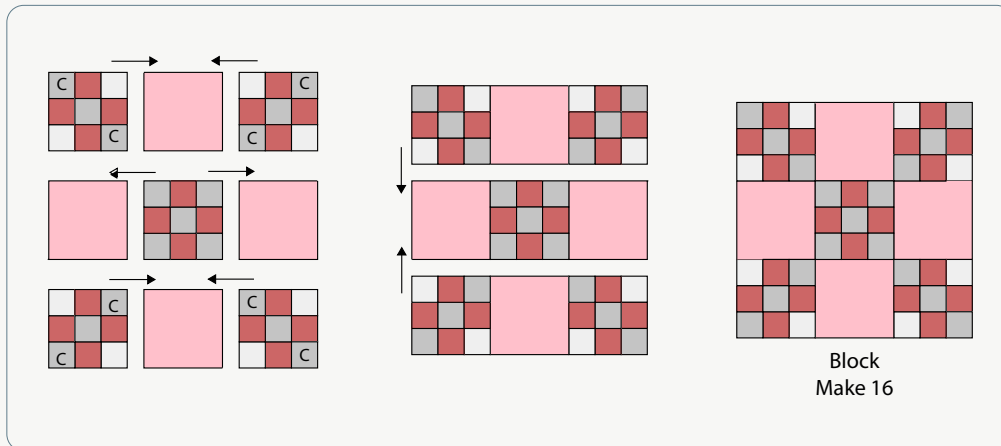
Fig. 2



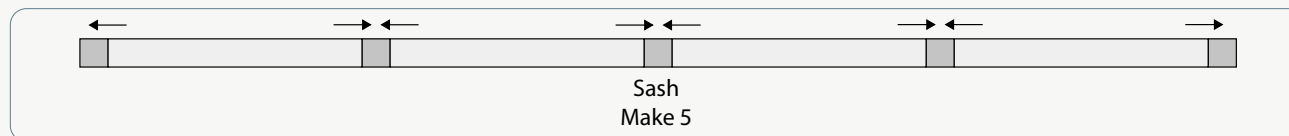
- 6** Sew (4) **Unit D**, (1) **Unit E**, and (4) 5" **Fabric B** squares together as shown (noting orientation of prints) in **Fig. 3** to make (1) Block. Trim and square to 14" x 14". Repeat to make (16) Blocks.

- 7** Prepare Sash Units by sewing (5) 2" **Fabric B** squares and (4) 2" x 14" **Fabric E** rectangles together as shown in **Fig. 4**. Repeat to make (5) Sash Units.

**Fig. 3**



**Fig. 4**



## QUILT TOP ASSEMBLY

**Note:** Follow the **Quilt Layout** diagram (page 7) while assembling the quilt top.

- 8** Sew (4) Blocks together into a row, with (1) 2" x 14" **Fabric E** rectangle between each block, and on either end of the row. Repeat to make (4) rows. Sew rows together with a Sash Unit between rows, and on the top and bottom of the quilt center.
- 9** Sew (1) 2" x 62" **Fabric D** strip to the left and right sides of the quilt top, matching ends and centers. Press. Sew (1) 2" x 65" **Fabric D** strip to the top and bottom of the quilt center. Press.
- 10** Sew (1) 5½" x 65" **Fabric A** to the left and right sides of the quilt top, matching ends and centers. Press. Sew (1) 5½" x 75" **Fabric A** strip to the top and bottom of the quilt center. Press. The quilt top should measure 75" x 75".

## FINISHING

- 11** Sew together (9) 2½" **Fabric D** binding strips end-to-end using diagonal seams. Press seams open. Press the binding strip in half, wrong sides together, and set aside until quilt is ready for binding.
- 12** Once the top is complete it is ready for quilting! Quilts can be sent out for longarm quilting or you can quilt it yourself. If you are sending the quilt out, it is important to discuss backing and batting requirements with the quilter to ensure they have everything needed to properly finish the quilt.
- 13** If quilting yourself and using 44" fabric for backing, choose your favorite method for piecing (taking time to remove selvages), then layer, baste and quilt. Once finished, trim excess batting and backing and bind according to your favorite method.
- 14** To complete binding by hand, it must first be machine sewn to the quilt top. Leaving an 8" tail of binding, sew binding to top of quilt through all layers, matching raw edges. Miter corners. Stop approximately 12" from where you started. Lay both loose ends of binding flat along quilt edge. Where the two loose ends meet, fold each side back on themselves and press to form a crease. Using this crease as your stitching line, sew the two open ends of the binding together right sides together. Trim seam to ¼" and press seam open. The binding will naturally fold, wrong sides together, and lay along the quilt edge. Finish sewing binding to quilt. Turn and press the binding to the back of the quilt and hand stitch in place.
- 15** If machine binding, complete the steps above only attach the binding to the BACK of the quilt, turn and press to the front of the quilt and machine stitch in place.

## Quilt Layout

