

Moment Quilt in Red

Featuring Step by Step - Keiko Goke

Take a moment to enjoy the beautiful prints of Step by Step - Keiko Goke in this simple framed quilt.

Collection:	Step by Step - Keiko Goke
Technique:	Mitered corners, pieced binding
Skill Level:	Advanced Beginner
Finished Size:	65" x 75" (165.10cm x 190.50cm)

Project designed by Kerri Thomson

Tech edited by Alison M. Schmidt

Fabric Requirements

DESIGN	COLOR	ARTICLE CODE	YARDAGE
(A) A Long Way	Red	CPKG009.RED	1 $\frac{3}{8}$ yds (1.26m)
(B) Thick and Thin	Red	CPKG008.RED	2 $\frac{3}{8}$ yds (2.17m)*
(C) I Love Roses	Red	CPKG013.RED	2 $\frac{3}{8}$ yds (2.17m)*

* includes binding

Backing (Purchased Separately)

44" (111.76cm)

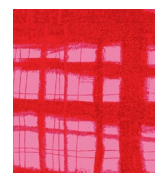
Zinnia	Blue	CPKG011.BLUE	4 $\frac{3}{4}$ yds (4.34m)
--------	------	--------------	-----------------------------

Additional Requirements

- 100% cotton thread in a color to blend
- 73" x 83" (185.42cm x 210.82cm) batting
- **Optional:** Binding Miter Tool from Animas Quilts



(A)



(B)



(C)



Backing
44"
(111.76cm)

Cutting

WOF = Width of Fabric

LOF = Length of Fabric

Fabric A, cut:

- (1) 45½" x WOF (115.57cm x WOF); sub-cut
- (1) 35½" x 45½" (90.17cm x 115.57cm) center panel

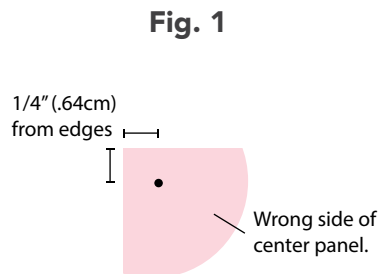
Fabrics B and C, cut from each:

- (2) 15½" x LOF (39.37cm x LOF); sub-cut (1) 15½" x 80" (39.37cm x 203.20cm) and (1) 15½" x 70" (39.37cm x 177.80cm) border strips
- (2) 2½" x LOF (6.35cm x LOF) strips for binding

Instructions

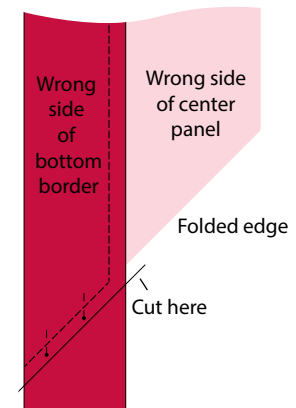
All seam allowances are ¼" (.64cm) and pieces are sewn right sides together. Follow the **Quilt Layout** on page 5 while assembling the quilt.

1. On the wrong side of the **Fabric A** center panel, draw a dot in each corner ¼" (.64cm) from the edges. (**Fig. 1**)



2. Find the center of the left-hand edge of the **Fabric A** panel by folding it in half and marking with a pin. Similarly find the center along the length of the 15½" x 80" (39.37cm x 203.20cm) **Fabric B** border strip and mark.
3. With the center panel on top, pin the **Fabric B** border strip to the left edge, matching the centers (the border will be longer than the quilt center on both ends). Sew along the pinned edge, starting and stopping at the marked dots, and backstitching at each end. Press the seam allowance towards the border.
4. Repeat the processes in Steps 2 and 3 to sew the 15½" x 70" (39.37cm x 177.80cm) **Fabric B** border strip to the bottom edge of the center panel. Press the seam allowance towards the center panel.
5. Fold the bottom of the center panel to meet the left side, right sides together, forming a 45° point at the bottom left corner. Adjust the center panel and left border so they both lay flat and the seam allowances nest, and then pin. Draw a line continuing the 45° fold from the corner of the center panel across the bottom border. Sew on the drawn line, starting at the border/center panel seam, backstitching at each end. (**Fig. 2**) Open the quilt top and check to see the mitered corner lays flat. Then carefully trim the seam allowance to ¼" (.64cm), and press open.

Fig. 2

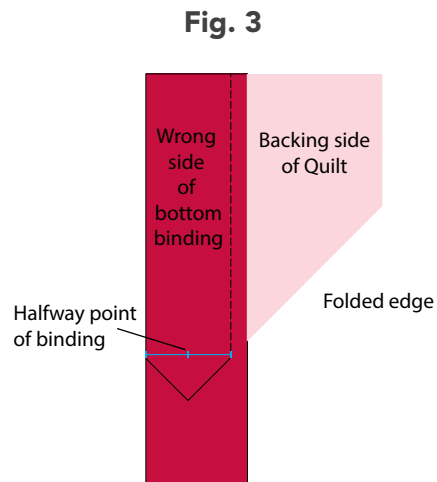


6. Repeat Steps 2 through 5 to attach the **Fabric C** border strips to the right and top of the center panel to complete the Quilt Top (65½" x 75½" (166.37cm x 191.77cm).

Finishing

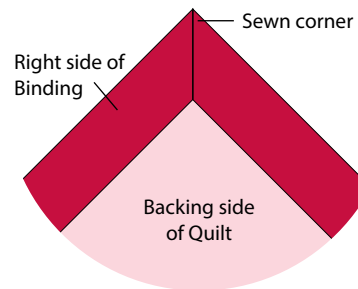
7. Layer backing (wrong side up), batting, and quilt top (right side up). Baste the layers together and quilt as desired. Trim excess batting and backing even with the top after quilting is completed.
Note: The binding is attached 1 side at a time so that the binding and border fabrics can be matched.
8. On the top of the quilt, mark ¼" in on all 4 corners.

9. Starting at the bottom right corner, place one folded **Fabric B** binding strip so that about 3" extends beyond the corner the quilt. Pin the binding across just the bottom edge of the quilt, aligning the raw edges, again leaving a few inches extending past the bottom-right hand corner.
10. Starting exactly $\frac{1}{4}$ " in from the top edge of the quilt, sew the B binding strip across the bottom edge stopping at the bottom right corner at the $\frac{1}{4}$ " mark. Do not overstretch.
11. Repeat steps 10 and 11 to sew the remaining B binding strip to the left-hand side of the quilt, and the 2 C strips to the right-hand side and the top edge of the quilt, stopping and starting at the $\frac{1}{4}$ " corner marks. (**Fig. 3.**)



12. Fold the quilt right sides together through the bottom-left corner, matching the B binding strips at the left-hand side and the bottom as you did when marking the border seam in Step 5. Use the square corner of a ruler or the Binding Miter Tool to mark a line as shown, from where the binding seam stops, continuing in the same angle as the folded quilt halfway across the binding, then turning 90° (a square corner) and continuing the line to the opposite edge of the binding. Pin to keep the binding strips together. (**Fig. 4**)

Fig. 4



13. Sew on the marked line through both binding strips, starting from the corner where the binding and quilt meet, backstitching carefully at the beginning, and pivoting at the marked corner. Backstitch at the end of the seam as well. Carefully trim the excess binding $\frac{1}{4}$ " from the seam, making sure not to cut the quilt. Finger press the mitered seam open.
14. Repeat Steps 12 and 13 to sew the miters on the remaining 3 corners.
15. Turn the binding to the back of quilt, using a point turner if needed so it lays flat. Hand-stitch in place.

Quilt Layout

