



Dappled Pines

Featuring Palette Green by Tim Holtz

The Palette Green fabrics of Tim Holtz shimmer and shine, highlighting the greens of spring among the pines.

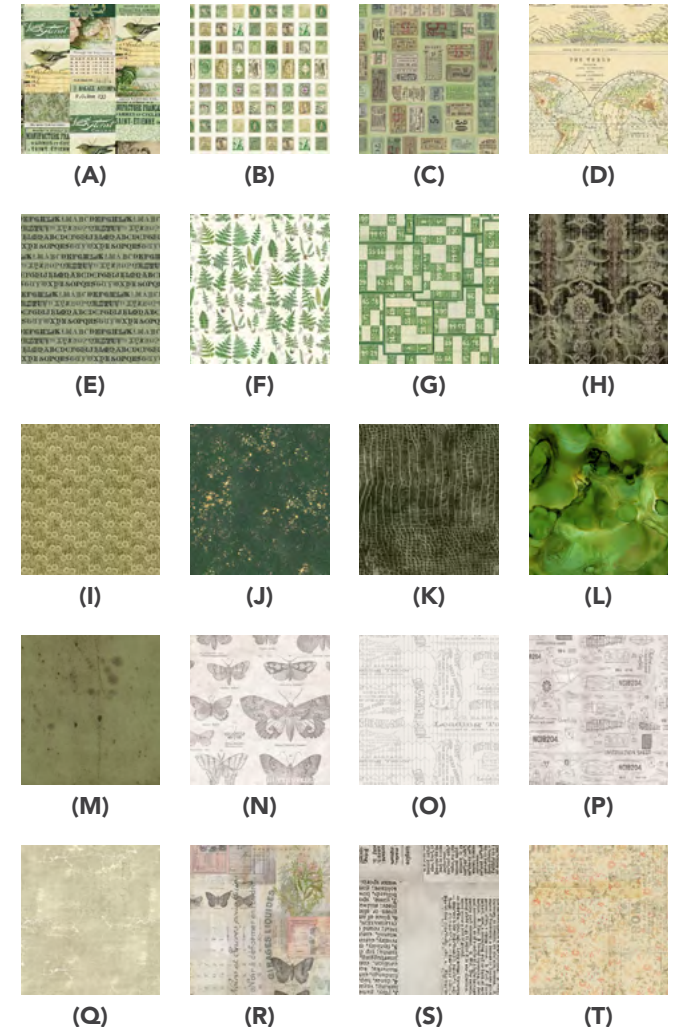
Collection:	Palette Green by Tim Holtz
Technique:	Pieced (8-at-a-time HST method)
Skill Level:	Advanced Beginner
Finished Sizes:	Finished Size: 67 ³ / ₈ " x 84 ³ / ₈ " (1.71m x 2.14m) Finished Block Size: 24" square (60.96cm square)

All possible care has been taken to ensure the accuracy of this pattern. We are not responsible for printing errors or the manner in which individual work varies. Please read the instructions carefully before starting this project. If kitting, it is recommended a sample is made to confirm accuracy.

Project designed by Kerri Thomson | Tech edited by Alison M. Schmidt

Fabric Requirements

DESIGN	COLOR	ITEM ID	YARDAGE
(A) Green Collage	Green	PWTH260.GREEN	$\frac{3}{8}$ yard (0.34m)
(B) Green Stamps	Green	PWTH261.GREEN	$\frac{3}{8}$ yard (0.34m)
(C) Green Tickets	Green	PWTH262.GREEN	$\frac{3}{8}$ yard (0.34m)
(D) Green Map	Green	PWTH263.GREEN	1 $\frac{1}{8}$ yards (1.03m)
(E) Green Typography	Green	PWTH264.GREEN	$\frac{3}{8}$ yard (0.34m)
(F) Green Ferns	Green	PWTH265.GREEN	$\frac{1}{2}$ yard (0.46m)
(G) Green Numbers	Green	PWTH266.GREEN	$\frac{1}{2}$ yard (0.46m)
(H) Green Tapestry	Green	PWTH267.GREEN*	1 $\frac{1}{4}$ yards (1.14m)
(I) Green Tiny Print	Green	PWTH268.GREEN	$\frac{3}{8}$ yard (0.34m)
(J) Green Vintage	Green	PWTH269.GREEN	$\frac{3}{4}$ yard (0.69m)
(K) Worn Croc	Bayou	PWTH020.BAYOU	$\frac{1}{3}$ yard (0.30m)
(L) Alchemy	Elixir	PWTH177.ELIXIR	$\frac{1}{3}$ yard (0.30m)
(M) Provisions	Sage	PWTH115.8SAGE	$\frac{1}{4}$ yard (0.23m)
(N) Butterflies	Parchment	PWTH004.PARCHMENT	$\frac{3}{8}$ yard (0.34m)
(O) Tailored	Linen	PWTH066.LINEN	$\frac{1}{2}$ yard (0.46m)
(P) Model Aeroplanes	Parchment	PWTH174.PARCHMENT	$\frac{3}{8}$ yard (0.34m)
(Q) Cracked Shadow	Quartz	PWTH128.QUARTZ	$\frac{3}{8}$ yard (0.34m)
(R) Botanical	Multi	PWTH028.8MULT	$\frac{1}{2}$ yard (0.46m)
(S) Dictionary	Neutral	PWTH008.NEUTR	$\frac{1}{2}$ yard (0.46m)
(T) From Camden	Multi	PWTH092.MULTI	$\frac{1}{2}$ yard (0.46m)



continued...

Fabric Requirements (continued...)

DESIGN	COLOR	ITEM ID	YARDAGE
(U) Multiplication Table	Parchment	PWTH106.PARCHMENT	½ yard (0.46m)
(V) Horticulture	Aqua	PWTH094.AQUAX	⅝ yard (0.57m)
(W) Rose Parcel	Multi	PWTH035.8MULT	⅝ yard (0.57m)

* includes binding

Backing (Purchased Separately)

44" (1.12m) wide

Green Tiny Print

Green

PWTH268.GREEN

5¼ yards (4.80m)

OR

108" (2.74m) wide

Expedition

Multi

QBTH007.MULTI

2⅞ yards (1.94m)



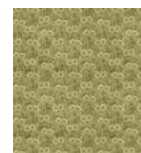
(U)



(V)



(W)



Backing
44"



Backing
108"

Additional Recommendations

- 100% cotton thread in colors to match
- 76" x 93" (1.93m x 2.36m) batting

Cutting:

WOF = Width of Fabric

After cutting pieces listed below, keep the remaining fabric with the project, as some additional pieces will be cut as needed when making the blocks to continue building the scrappy look.

Fabrics A, C, E, N and P, cut from each:

- (1) 8" x WOF; subcut
- (5) 8" squares

Fabric B, cut:

- (1) 8" x WOF; subcut
- (4) 8" squares
- (2) 3½" squares

Fabric D, cut:

- (2) 8" x WOF; subcut
- (9) 8" squares
- (3) 5½" x WOF; subcut
- (16) 5½" squares, cut on both diagonal to make (64) Setting Triangles
- (2) 5½" squares, cut on one diagonal to make
- (4) Corner Triangles
- (4) 3½" squares

Fabrics F and G, cut from each:

- (2) 8" x WOF; subcut
- (6) 8" squares
- (2) 3½" squares

Fabric H, cut:

- (1) 8" x WOF; subcut
- (3) 8" squares
- (1) 7" x WOF; subcut
- (4) 7" squares
- (1) 4¾" x WOF; subcut
- (4) 4¾" x 9" rectangles
- (9) 2½" x WOF for binding

Fabrics I and Q, cut from each:

- (1) 8" x WOF; subcut
- (5) 8" squares
- (1) 3½" x WOF; subcut
- (2) 3½" squares

Fabric J, cut:

- (2) 8" x WOF; subcut
- (10) 8" squares
- (2) 3½" x WOF; subcut
- (20) 3½" squares

Fabric K, cut:

- (1) 9" x WOF; subcut
- (1) 4¾" x 9" rectangle
- (3) 8" squares
- (1) 7" square

Fabric L, cut:

- (1) 8" x WOF; subcut
- (3) 8" squares

Fabric M, cut:

- (1) 8" x WOF; subcut
- (2) 8" squares

Fabrics O and R, cut from each:

- (2) 8" x WOF; subcut
- (6) 8" squares

Fabric S, cut:

- (2) 8" x WOF; subcut
- (7) 8" squares

Fabric T, cut:

- (2) 8" x WOF; subcut
- (8) 8" squares
- (2) 3½" squares

Fabric U, cut:

- (2) 8" x WOF; subcut
- (8) 8" squares

Fabrics V and W, cut from each:

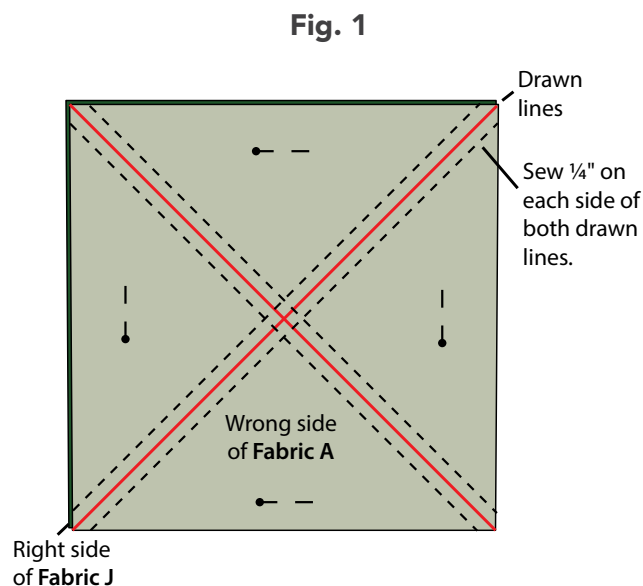
- (2) 8" x WOF; subcut
- (7) 8" squares
- (2) 3½" squares

Instructions

- All seam allowances are $\frac{1}{4}$ " and pieces are sewn right sides together. Press following the arrows in the diagrams, or press open if no pressing direction is given.
- This quilt is designed to have a scrappy vintage feel. Fabrics are assigned for the Pine Branch half square triangle (HST) units and named for the (darker) fabric of the branch, e.g. **Fabric J** Pine Branch HST units. For the Background HST units, select fabric combinations that are pleasing to you for a unique quilt or use the **Quilt Layout** diagram as a guide for fabric placement.

HST Unit Construction

- Select (1) **Fabric A** and (1) **Fabric J** 8" square. On the wrong side of the **Fabric A** square draw a line on both diagonals.
- Place the (2) 8" squares right sides together and pin. Sew $\frac{1}{4}$ " on each side of the drawn lines. (**Fig. 1**)



- Cut the sewn square in half vertically and horizontally. (**Fig. 2a**) Cut along the drawn diagonal lines. Press the HST units open and square to $3\frac{1}{2}$ " to make (8) **Fabric J** Pine Branch HST units. (**Fig. 2b**)

Fig. 2a

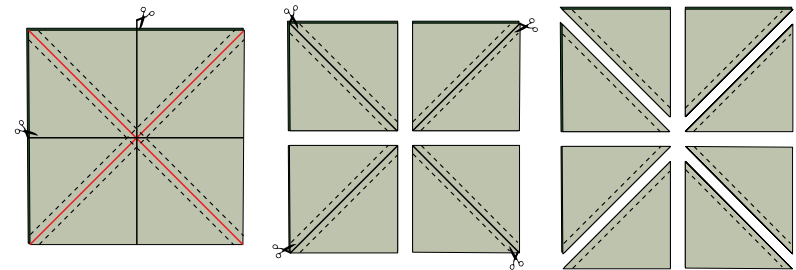
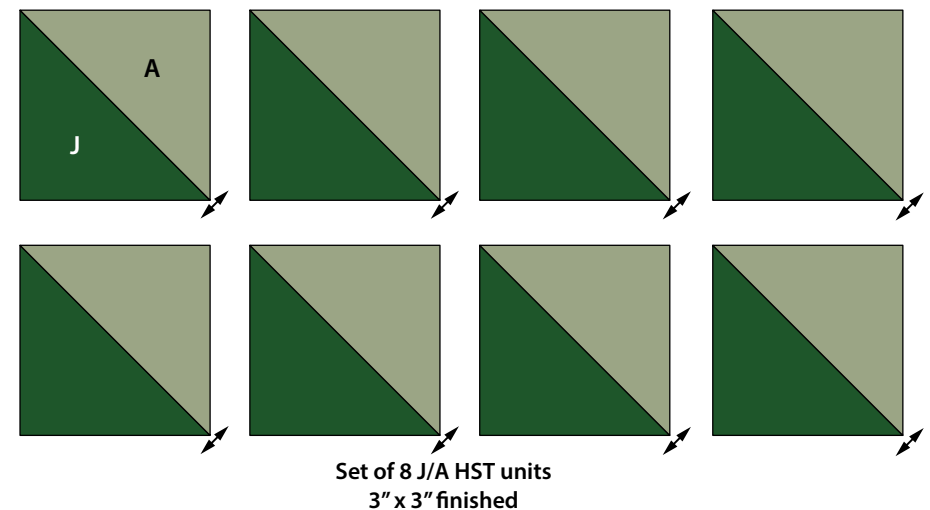


Fig. 2b



4. Repeat the process in Steps 1 to 3 using the fabric pairs listed in the table below to make (80) **Fabric J** (including a second set of 8 with **Fabric A**), (24) **Fabric H**, (32) **Fabric E** and (24) **Fabric K** Pine Branch HST units. (**Fig. 3**)

Fig. 3

Pine Branch HST Units		
Pine Branch Fabric 8" squares	Background Fabric 8" squares	Pine Branch HST units
(2) Fabric J squares	(2) Fabric A squares	(16) Fabric J HST units
(2) Fabric J squares	(2) Fabric C squares	(16) Fabric J HST units
(2) Fabric J squares	(2) Fabric D squares	(16) Fabric J HST units
(2) Fabric J squares	(2) Fabric I squares	(16) Fabric J HST units
(2) Fabric J squares	(2) Fabric R squares	(16) Fabric J HST units
(1) Fabric H square	(1) Fabric G square	(8) Fabric H HST units
(1) Fabric H square	(1) Fabric T square	(8) Fabric H HST units
(1) Fabric H square	(1) Fabric W square	(8) Fabric H HST units
(2) Fabric E squares	(2) Fabric D squares	(16) Fabric E HST units
(1) Fabric E square	(1) Fabric T square	(8) Fabric E HST units
(1) Fabric E square	(1) Fabric W square	(8) Fabric E HST units
(1) Fabric K square	(1) Fabric G square	(8) Fabric K HST units
(1) Fabric K square	(1) Fabric T square	(8) Fabric K HST units
(1) Fabric K square	(1) Fabric W square	(8) Fabric K HST units

5. Select (2) of the remaining 8" squares and repeat the process in Steps 1 to 3 to make (8) Background HST units. Repeat with your preferred remaining 8" squares to make a total of (368) Background HST units – there will be extra 8" squares left over. (**Fig. 4**)

Fig. 4

8-at-a-time HST units



J/assorted: Make 80

E/assorted: Make 32

H/assorted and K/assorted: Make 24 each

Block Construction

Dappled Pine Blocks

6. Select (4) 3½" **Fabric J** squares, (16) **Fabric J**, (6) **Fabric K** and (6) **Fabric E** Pine Branch HST units, (22) Background HST units, (1) 4¾" x 9" **Fabric H** rectangle and (1) 7" **Fabric H** square.
7. Lay out (10) **Fabric J** Pine Branch HST units, (2) Background HST units and the (4) 3½" **Fabric J** squares into (4) rows of (4) elements, centered around the (4) 3½" squares placed on the diagonal. (**Fig. 5**) Position the darker fabric side of the HST units away from the 3½" squares. Sew the pieces into rows. Sew the rows together to complete the Tree Top (12½" square).

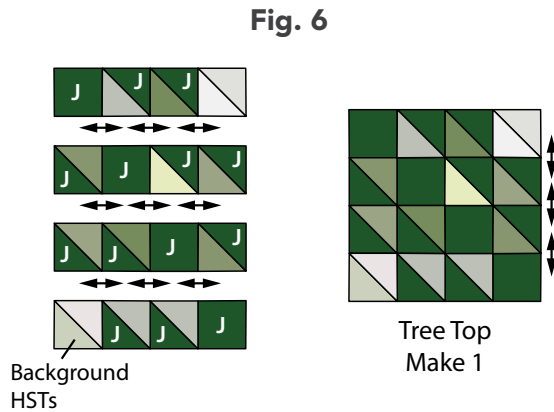
Fig. 5

8-at-a-time Background HST units



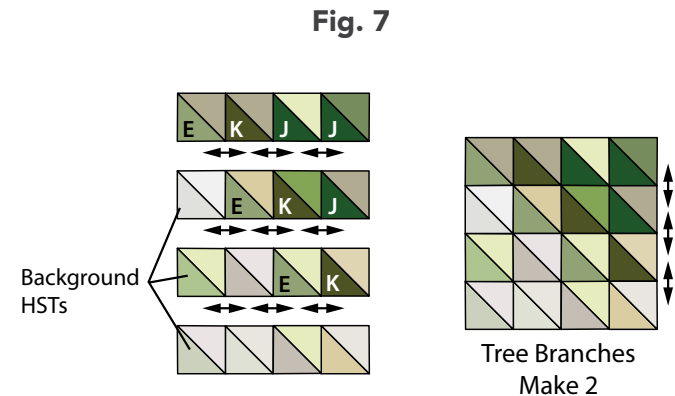
Make 368

8. Lay out (3) each **Fabric J, K** and **E** Pine Branch HST units and (7) Background HST units into (4) rows of (4) HST units. (**Fig. 6**) Position the darker fabric side of all HST units towards the lower left corner. Sew the HST units into rows. Sew the rows together to complete (1) Tree Branch (12½" square). Repeat to make (2) Tree Branches.

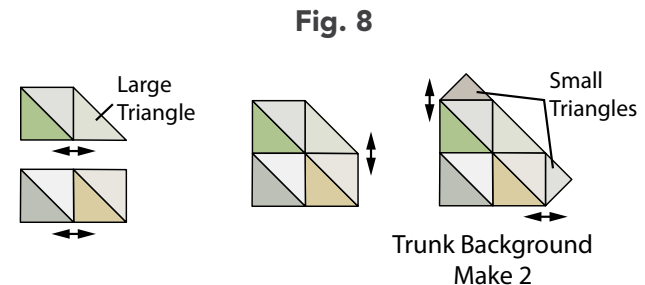


9. From the remaining fabric left after cutting, select three lighter fabrics that will add to the scrappy look of the background and cut (2) 3⅞" squares, then cut in half once diagonally for (4) large triangles, and (2) 4¼" squares, cut in half on both diagonals for (8) small triangles.

10. Lay out (3) Background HST units and (1) large triangle cut in the previous step in (2) rows of (2) pieces. (**Fig. 7**) Position the darker fabric side of the HST units towards the lower left corner. Sew the pieces into rows. Sew the rows together and finally sew small triangles to the top and right-hand edges to complete (1) Trunk Background. Repeat to make (2) Trunk Backgrounds.

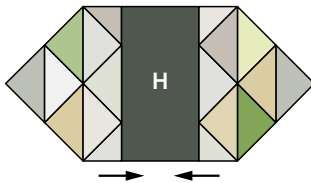


11. Sew a Trunk Background to each side of a 4¾" x 9" **Fabric H** rectangle. (**Fig. 8**)



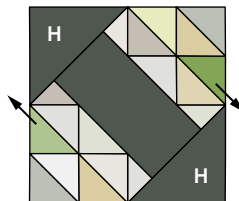
12. Cut the 7" **Fabric H** square in half once diagonally. Center and sew the triangles to the top and bottom of the unit from the previous step. (**Fig. 9**) Trim to 12½" square to complete the Tree Trunk.

Fig. 9



13. Lay out the Tree Top, (2) Tree Branches and the Tree Trunk in a four patch. (**Fig. 10**) Sew the pieces together in rows. Sew the rows together to complete (1) Dappled Pine Block (24½" square).

Fig. 10



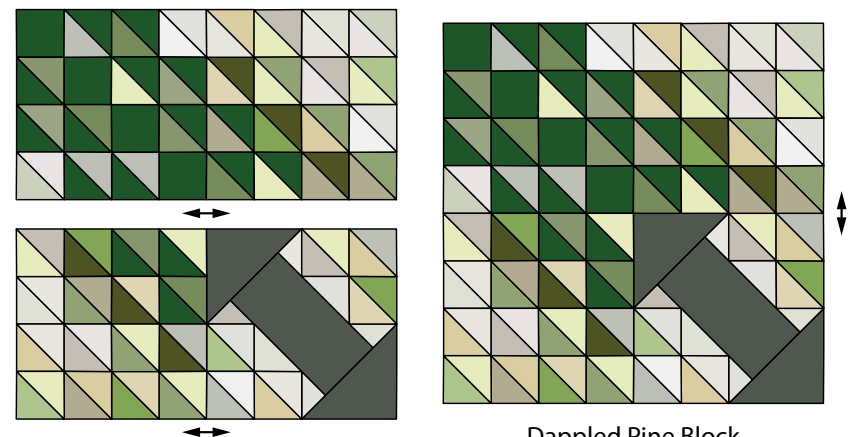
Tree Trunk
Make 1

14. Repeat Steps 6 to 13 to make (4) Dappled Pine Blocks.

Center Pine Block

15. Select (4) 3½" **Fabric J** squares, (16) **Fabric J**, (6) **Fabric H** and (6) **Fabric E** Pine Branch HST units, (22) Background HST units, (1) 4¾" x 9" **Fabric K** rectangle and (1) 7" **Fabric K** square.
16. Repeat the process in Steps 7 to 13 to make (1) Center Pine Block (24½" square), swapping the placement of **Fabrics H** and **K**. (**Fig. 11**)

Fig. 11



Dappled Pine Block
Make 4

Background Units

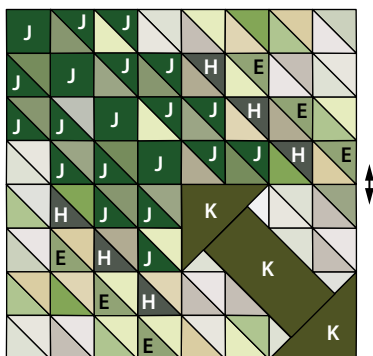
Combine the remaining Tree Branch HST units with the Background HST units and treat them all as Background HST units for the following steps. There will be some extra to allow for variety when piecing together the background units.

From this point on, the $3\frac{1}{2}$ " squares of **Fabrics B, D, F, G, I, Q, T, V** and **W** will all be referred to as $3\frac{1}{2}$ " Background squares.

Background Unit 1

17. Select (2) $3\frac{1}{2}$ " Background squares, (28) Background HST units, (10) **Fabric D** Setting Triangles and (1) **Fabric D** Corner Triangle.
18. Lay out the $3\frac{1}{2}$ " Background squares and Background HST units in (5) rows, consisting of (1) row each of (2), (4), (6), (8) and (10) pieces. (**Fig. 12**) Position the darker fabric side of the HST units away from the $3\frac{1}{2}$ " squares in the bottom 2 rows, and follow the same value placement in all other rows. Place a **Fabric D** Setting Triangle at both ends of each row. Sew the pieces into rows, making sure to keep the square corners of the setting triangles aligned with the bottom of the HST units. Trim off the **Fabric D** dog ears if desired.

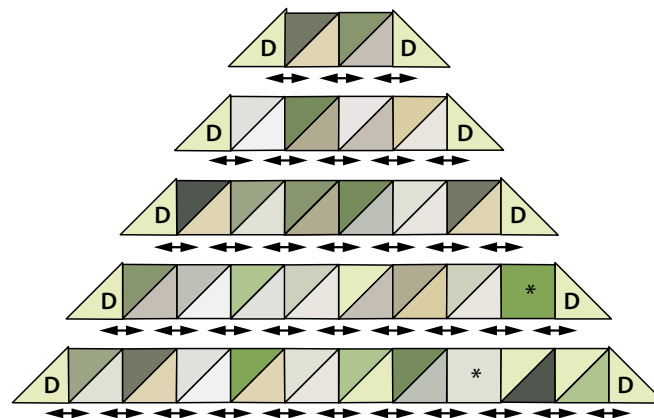
Fig. 12



Center Pine Block
Make 1

19. Sew the rows together, centering them on top of each other, and matching the seam intersections. (**Fig. 13**) Sew the **Fabric D** Corner Triangle to the top to complete (1) Background Unit 1.

Fig. 13



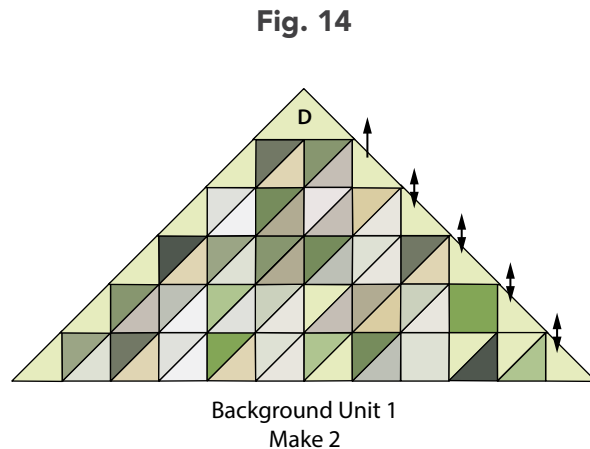
*Note placement of squares in bottom 2 rows.

20. Repeat Steps 17 to 19 to make a second Background Unit 1.

Background Unit 2

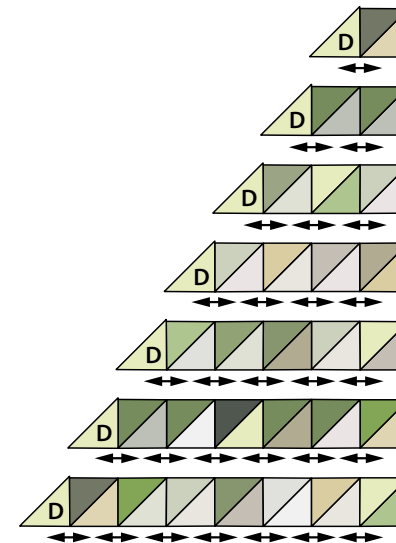
21. Select (28) Background HST units and (8) **Fabric D** Setting Triangles.

22. Lay out the Background HST units in (7) rows, consisting of (1) row each of (1), (2), (3), (4), (5), (6) and (7) HST units. (**Fig. 14**) Position the darker fabric side of the HST units towards the left-hand end of the rows. Place a **Fabric D** Setting Triangle at the left-hand end of each row. Sew the pieces into rows.



23. Sew the rows together, keeping the right-hand ends even. (**Fig. 15**) Sew the remaining **Fabric D** Setting Triangle to the top to complete (1) Background Unit 2.

Fig. 15



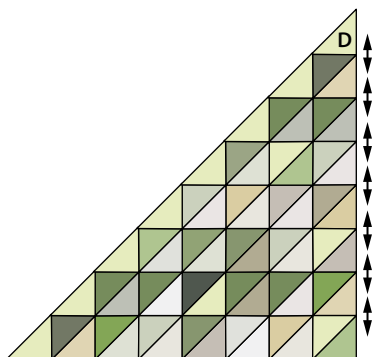
24. Repeat Steps 21 to 23 to make a second Background Unit 2.

Background Unit 3

25. Select (8) $3\frac{1}{2}$ " Background squares, (52) Background HST units and (8) **Fabric D** Setting Triangles.

26. Lay out the $3\frac{1}{2}$ " Background squares and Background HST units in (8) rows, consisting of (1) row each of (4), (5), (6), (7), (8), (9), (10) and (11) elements. (**Fig. 16**) Position the darker fabric side of the HST units towards the diagonal line of (6) $3\frac{1}{2}$ " squares and away from the diagonal line of (2) $3\frac{1}{2}$ " squares. Place a **Fabric D** Setting Triangle at right-hand end of each row. Sew the pieces into rows.

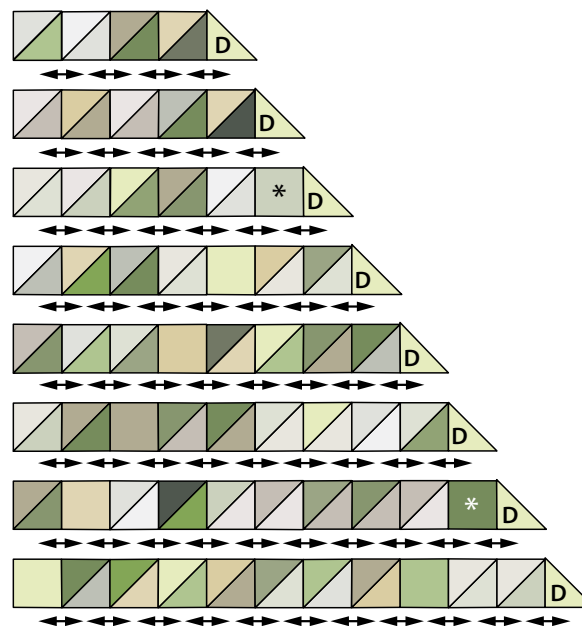
Fig. 16



Background Unit 2
Make 2

27. Sew the rows together, keeping the left-hand ends even, to complete (1) Background Unit 3. (**Fig. 17**)

Fig. 17



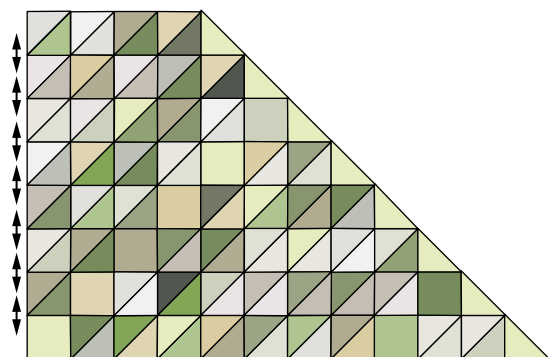
**Note placement of squares in all but top 2 rows.*

28. Repeat Steps 25 to 27 to make a second Background Unit 3.

Background Unit 4

- 29.** Select (24) Background HST units, (6) **Fabric D** Setting Triangles and (1) **Fabric D** Corner Triangle.
- 30.** Lay out the Background HST units in (5) rows, consisting of (1) row each of (2), (4), (5), (6) and (7) HST units. (**Fig. 18**) Position the darker fabric side of the HST units towards the right-hand end of the rows. Place a **Fabric D** Setting Triangle at the right-hand end of each row and at the left-hand end of the top row. Sew the pieces into rows.

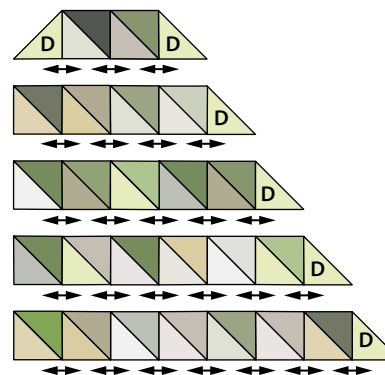
Fig. 18



Background Unit 3
Make 2

- 31.** Sew the rows together, keeping the left-hand ends even. (**Fig. 19**) Sew the **Fabric D** Corner Triangle to the top to complete (1) Background Unit 4.

Fig. 19



- 32.** Repeat Steps 29 to 31 to make a second Background Unit 4. There will be some extra HST units.

Quilt Top Assembly

Note: Follow the **Quilt Layout** diagram (page 14) while assembling the quilt.

- 33.** Sew (1) Dappled Pine Block between (1) Background Unit 2 and (1) Background Unit 3, pinning to match seam intersections, to complete Row 1.
- 34.** Sew the Center Pine Block between (2) Dappled Pine Blocks and (2) Background Unit 4 to complete Row 2.
- 35.** Sew (1) Dappled Pine Block between (1) Background Unit 3 and (1) Background Unit 2 to complete Row 3.
- 36.** Sew the Rows together in numerical order. Sew a Background Unit 1 to the upper left and lower right corners to complete the Quilt Top (68 $\frac{3}{8}$ " x 85 $\frac{3}{8}$ ").

Finishing

- 37.** Sew together the 2 $\frac{1}{2}$ " **Fabric H** binding strips end to end using diagonal seams. Press seams open. Press the binding strip in half wrong sides together.
- 38.** Layer backing (wrong side up), batting, and quilt top (right side up). Baste the layers together and quilt as desired. Trim excess batting and backing even with the top after quilting is completed.
- 39.** Leaving an 8" tail of binding, sew the binding to the top of the quilt through all layers matching all raw edges. Miter corners. Stop approximately 12" from where you started. Lay both loose ends of binding flat along quilt edge. Where the loose ends meet, fold them back on themselves and press to form a crease. Using this crease as your stitching line, sew the two open ends of the binding right sides together. Trim seam to $\frac{1}{4}$ " and press open. Finish sewing binding to quilt.
- 40.** Turn the binding to the back of quilt and hand-stitch in place.

Quilt Layout

