



Burnished Quilt

Featuring Orange Palette by Tim Holtz

Enjoy the warmth of Burnished, featuring Tim Holtz, Palette, Orange.

Collection:	Tim Holtz, Palette, Orange
Technique:	Pieced with fusible machine appliqué
Skill Level:	Advanced Beginner
Finished Sizes:	Finished Size: 70" x 80" (1.77m x 2.03m)
	Finished Block Size: 10" x 20" (25.4cm x 50.8cm)

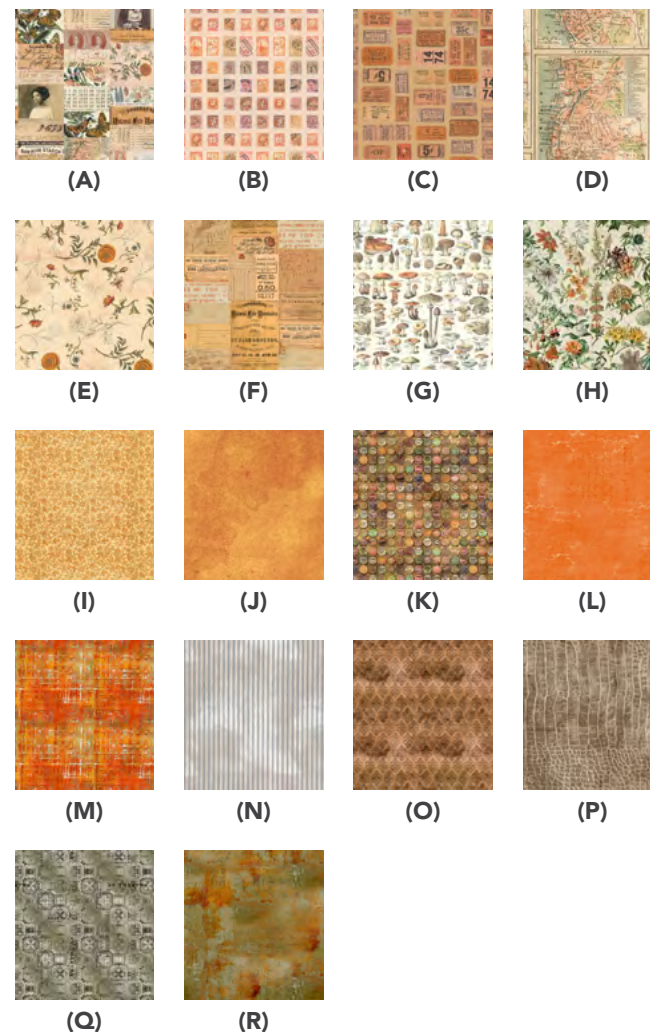
All possible care has been taken to ensure the accuracy of this pattern. We are not responsible for printing errors or the manner in which individual work varies. Please read the instructions carefully before starting this project. If kitting, it is recommended a sample is made to confirm accuracy.

Project designed by Kerri Thomson | Tech edited by Alison M. Schmidt

Fabric Requirements

DESIGN	COLOR	ITEM ID	YARDAGE
(A) Orange Collage	Orange	PWTH230.ORANGE	$\frac{3}{8}$ yard (0.34m)
(B) Orange Stamps	Orange	PWTH231.ORANGE	$\frac{1}{2}$ yard (0.46m)
(C) Orange Tickets	Orange	PWTH232.ORANGE	$\frac{1}{2}$ yard (0.46m)
(D) Orange Map	Orange	PWTH233.ORANGE	$\frac{2}{3}$ yard (0.61m)
(E) Orange Sketchbook	Orange	PWTH234.ORANGE	$\frac{1}{2}$ yard (0.46m)
(F) Orange Ephemera	Orange	PWTH235.ORANGE	$\frac{1}{3}$ yard (0.30m)
(G) Orange Toadstools	Orange	PWTH236.ORANGE	$\frac{3}{8}$ yard (0.34m)
(H) Orange Botanical	Orange	PWTH237.ORANGE	$\frac{2}{3}$ yard (0.61m)
(I) Orange Tiny Print	Orange	PWTH238.ORANGE	$\frac{1}{2}$ yard (0.46m)
(J) Orange Vintage	Orange	PWTH239.ORANGE	$\frac{1}{2}$ yard (0.46m)
(K) Top Shop	Multi	PWTH024.MULTI*	1 yard (0.91m)
(L) Cracked Shadow	Carnelian	PWTH128.CARNELIAN	$\frac{3}{8}$ yard (0.34m)
(M) Scraped Layers	Sienna	PWTH144.SIENNA	$\frac{1}{3}$ yard (0.30m)
(N) Ticking	Neutral	PWTH068.8NEUT	$\frac{1}{3}$ yard (0.30m)
(O) Spellbound	Orange	PWTH148.ORANGE	$\frac{2}{3}$ yard (0.61m)
(P) Worn Croc	Pebble	PWTH020.PEBBLE	$\frac{2}{3}$ yard (0.61m)
(Q) Du Theater	Neutral	PWTH139.NEUTRAL	$\frac{2}{3}$ yard (0.61m)
(R) Writing Specimen	Sienna	PWTH135.SIENNA	$\frac{2}{3}$ yard (0.61m)

* includes binding



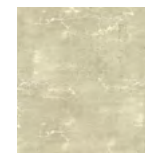
continued...

Fabric Requirements (continued...)

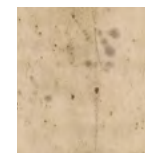
DESIGN	COLOR	ITEM ID	YARDAGE
(S) Expedition	Multi	PWTH016.MULTI	$\frac{2}{3}$ yard (0.61m)
(T) Cracked Shadow	Quartz	PWTH128.QUARTZ	$\frac{3}{8}$ yard (0.34m)
(U) Provisions	Linen	PWTH115.8LINE	$\frac{3}{8}$ yard (0.34m)
(V) Dictionary	Neutral	PWTH008.NEUTR	$\frac{3}{8}$ yard (0.34m)
(W) Eggs & Nest	Multi	PWTH031.8MULT	$\frac{1}{3}$ yard (0.31m)
(X) From Camden	Multi	PWTH092.MULTI	$\frac{2}{3}$ yard (0.61m)
(Y) Melange	Neutral	PWTH001.NEUTR	$\frac{2}{3}$ yard (0.61m)



(S)



(T)



(U)



(V)



(W)



(X)



(Y)

Backing (Purchased Separately)

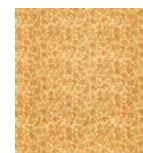
44" (1.12m) wide

Orange Tiny Print Orange PWTH238.ORANGE 5 yards (4.57m)

OR

108" (2.74m) wide

Expedition Multi QBTH007.MULTI $2\frac{1}{3}$ yards (2.13m)



Backing
44"



Backing
108"

Additional Recommendations

- 100% cotton thread in colors to match
- 78" x 88" (1.98m x 2.24m) batting
- $6\frac{3}{4}$ yards (6.17m) 20" (.51m) wide lightweight non-woven fusible interfacing
- Invisible or matching thread for machine appliqué

Cutting:

WOF = Width of Fabric.

Fabric A, cut:

- (1) 10½" x WOF; subcut
- (7) 5½" x 10½" rectangles

Fabrics B, C and J, cut from each:

- (4) 4" x WOF strips; subcut
- (11) 4" x 12½" rectangles

Fabric D, cut:

- (2) 10½" x WOF; subcut
- (9) 5½" x 10½" rectangles

Fabrics E and I, cut from each:

- (4) 4" x WOF; subcut
- (10) 4" x 12½" rectangles

Fabric F, cut:

- (2) 4" x WOF; subcut
- (6) 4" x 12½" rectangles

Fabric G, cut:

- (3) 4" x WOF; subcut
- (9) 4" x 12½" rectangles

Fabric H, cut:

- (2) 10½" x WOF; subcut
- (12) 5½" x 10½" rectangles

Fabric K, cut:

- (3) 4" x WOF; subcut
- (9) 4" x 12½" rectangles
- (8) 2½" x WOF for Binding

Fabric L, cut:

- (3) 4" x WOF; subcut
- (8) 4" x 12½" rectangles

Fabrics M and W, cut from each:

- (2) 4" x WOF; subcut
- (5) 4" x 12½" rectangles

Fabric N, cut:

- (2) 4" x WOF; subcut
- (4) 4" x 12½" rectangles

Fabric O, cut:

- (2) 10½" x WOF; subcut
- (10) 5½" x 10½" rectangles

Fabrics P, Q, R, S, X and Y, cut from each:

- (2) 10½" x WOF; subcut
- (8) 5½" x 10½" rectangles

Fabrics T, U and V, cut from each:

- (1) 10½" x WOF; subcut
- (7) 5½" x 10½" rectangles

Lightweight Fusible Interfacing, cut:

- (19) 12½" x 20"; subcut
- (94) 4" x 12½" rectangles

Instructions

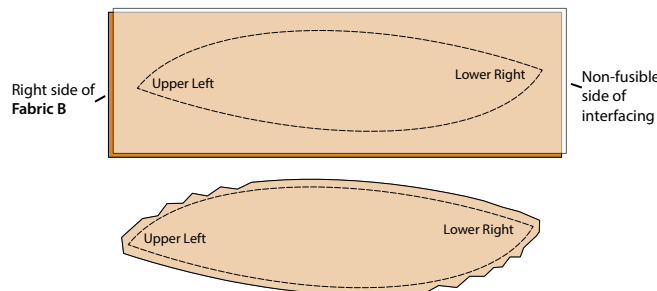
- All seam allowances are $\frac{1}{4}$ " and pieces are sewn right sides together unless otherwise stated.
 - When printing appliqué patterns (page 10-11), measure the 1" square to check that the printed patterns are the correct size.
 - This quilt is pieced for a scrappy vintage feel. Fabrics are assigned for the left and right leaves and backgrounds, however not the leaf/background combinations. Select background and leaf fabric combinations that are pleasing to you for a unique quilt or use the **Quilt Layout** diagram (page 9) as a guide for fabric placement.
- Sort the background $5\frac{1}{2}$ " x $10\frac{1}{2}$ " rectangles into two piles:
 - **Fabrics O, P, Q, R, V, W** and **Y** for the Left Background; and
 - **Fabrics A, D, H, S, T, U** and **X** for the Right Background.

Prepare Leaf Appliqué

Instructions and patterns are provided for finished-edge fusible appliqué. If you wish to use another appliqué technique, make a test block of each leaf to ensure the correct orientation of the leaves.

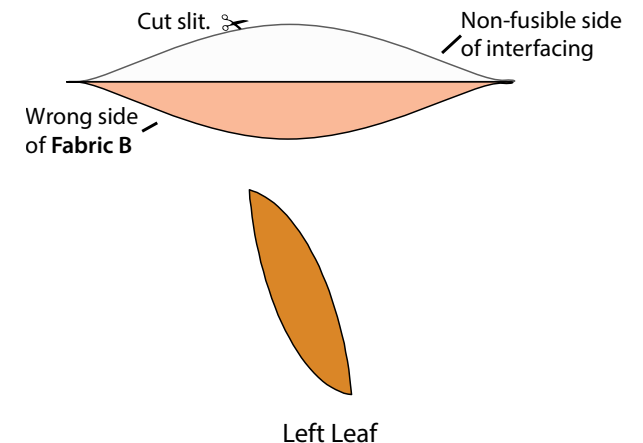
- Center a 4" x $12\frac{1}{2}$ " lightweight fusible interfacing rectangle, non-fusible side up, on top of the Left Leaf template (Page 10). Trace the template and mark the upper left and lower right corners. Repeat to trace (48) Left Leaves.
- Place a traced Left Leaf, non-fusible side up, on top of the right side of a 4" x $12\frac{1}{2}$ " **Fabric B** rectangle, matching the raw edges and pin. Sew along the traced line of the Leaf. (**Fig. 1**) Trim the outer seam allowance to $\frac{1}{4}$ " and clip the curves and corners to reduce the seam allowance bulk, being careful to not cut the seam. DO NOT press with an iron as the glue on the fusible side will be activated.

Fig. 1



- Separate the fusible interfacing from fabric and cut a slit in the center of the interfacing. Turn the Left Leaf right side out through the slit. (**Fig. 2**) Using a point turner or the end of a pair of scissors, gently push the seam allowance out to form the shape of the leaf to complete (1) Left Leaf. **DO NOT** press with an iron as the glue on the fusible side will be activated.

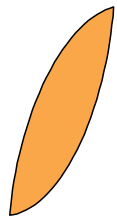
Fig. 2



- Repeat Steps 3 and 4 to make (5) total **Fabric B**, (3) each **Fabric C, J** and **L**, (6) each **Fabric E, G** and **I**, and (4) each **Fabric F, K, M** and **N** Left Leaves.

6. Repeat Step 2 to trace (46) Right Leaf templates (Page 11).
7. Repeat Steps 3 and 4 to make (5) each **Fabric B** and **K**, (8) each **Fabric C**, **J** and **L**, (4) each **Fabric E** and **I**, (2) **Fabric F**, (3) **Fabric G**, and (1) **Fabric M** Right Leaves. (Fig. 3)

Fig. 3



Right Leaf

Burnished Blocks

8. Select (2) 5½" x 10½" Left Background rectangles, (2) Left Leaves, (2) 5½" x 10½" Right Background rectangles and (2) Right Leaves.
9. Mark a dot, ¼" from both raw edges, in the upper left and lower right corners, on the right side of both Left Background rectangles. (Fig. 4)

Fig. 4

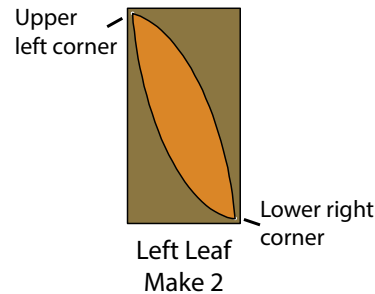
Mark 1/4" from both edges.



Mark Left Background
Make 2

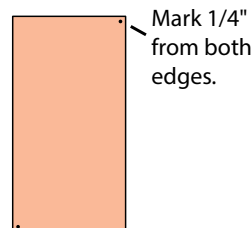
10. Place a Left Leaf, right side up on top of one Left Background rectangle, matching the upper left and lower right points of the leaf with the marked dots. (Fig. 5) Fuse in place. Stitch along the edge of the leaf using invisible thread, or use your favorite appliqué method, to secure to the background. Repeat with the second Left Leaf and Background.

Fig. 5



11. Mark a dot, ¼" from both raw edges, in the upper right and lower left corners, on the right side of both Right Background rectangles. (Fig. 6)

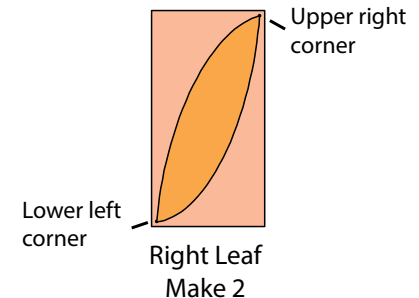
Fig. 6



Mark Right Background
Make 2

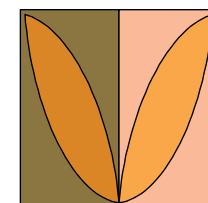
12. Place a Right Leaf, right side up on top of one Right Background rectangle, matching the upper right and lower left points of the leaf with the marked dots. (Fig. 7) Fuse in place. Appliqué the edge using the same applique method as the left leaves in step 10. Repeat with the second Right Leaf and Background.

Fig. 7



13. Sew a Left and Right Leaf together, so the lower corner leaf points are in the center. (Fig. 8) Press seams open. Repeat with the second Left and Right Leaves.

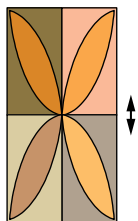
Fig. 8



Make 2

- 14.** Sew the Leaf pairs together, rotating the lower pair so the inner points of all four leaves are toward the center, to complete (1) Burnished Block (10½" x 20½"). (**Fig. 9**) Press seams open.

Fig. 9



Burnished Block
Make 22

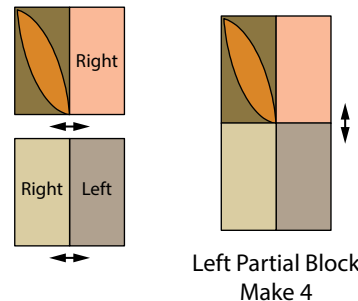
- 15.** Repeat Steps 8 to 14 to make (22) Burnished Blocks.

Partial Blocks

- 16.** Select (1) Left Leaf and (2) each 5½" x 10½" Left and Right Background rectangles.
- 17.** Repeat Steps 9 and 10 to appliqué the Left Leaf to one of the Left Background rectangles.

- 18.** Sew the Left Leaf and a Right Background rectangle together, so the Left Leaf lower corner leaf point is in the center. (**Fig. 10**) Sew together the remaining Left and Right Background rectangles, noting orientation shown. Sew the pairs together to complete (1) Left Partial Block (10½" x 20½"). Press seams open.

Fig. 10

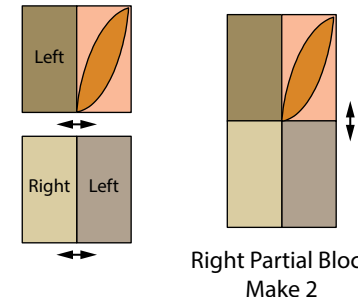


Left Partial Block
Make 4

- 19.** Repeat Steps 16 to 18 to make a total of (4) Left Partial Blocks.
- 20.** Select (1) Right Leaf and (2) each 5½" x 10½" Left and Right Background rectangles.
- 21.** Repeat Steps 11 and 12 to appliqué the Right Leaf to one of the Right Background rectangles.

- 22.** Sew a Left Background rectangle and the Right Leaf together. The Right Leaf lower corner leaf point is in the center. (**Fig. 11**) Sew together the remaining Left and Right Background rectangles, noting orientation shown. Sew the pairs together to complete (1) Right Partial Block (10½" x 20½"). Press seams open.

Fig. 11



Right Partial Block
Make 2

- 23.** Repeat Steps 20 to 22 to make a total of (2) Right Partial Blocks.

Quilt Top

Note: Follow the **Quilt Layout** (page 9) diagram while assembling the quilt.

- 24.** Lay out the Burnished and Partial Blocks, noting the orientation of the Partial Blocks, in (4) Rows of (7) Blocks.
- 25.** Sew the Blocks of each Row together. Press the seams of the odd rows to the left and the even rows to the right.
- 26.** Sew the Rows together to complete the Quilt Top (70½" x 80½").

Finishing

- 27.** Sew together the 2½" **Fabric K** binding strips end to end using diagonal seams. Press seams open. Press the binding strip in half wrong sides together.
- 28.** Layer backing (wrong side up), batting, and quilt top (right side up). Baste the layers together and quilt as desired. Trim excess batting and backing even with the top after quilting is completed.
- 29.** Leaving an 8" tail of binding, sew the binding to the top of the quilt through all layers matching all raw edges. Miter corners. Stop approximately 12" from where you started. Lay both loose ends of binding flat along quilt edge. Where the loose ends meet, fold them back on themselves and press to form a crease. Using this crease as your stitching line, sew the two open ends of the binding right sides together. Trim seam to ¼" and press open. Finish sewing binding to quilt.
- 30.** Turn the binding to the back of quilt and hand-stitch in place.

Quilt Layout



Row 1



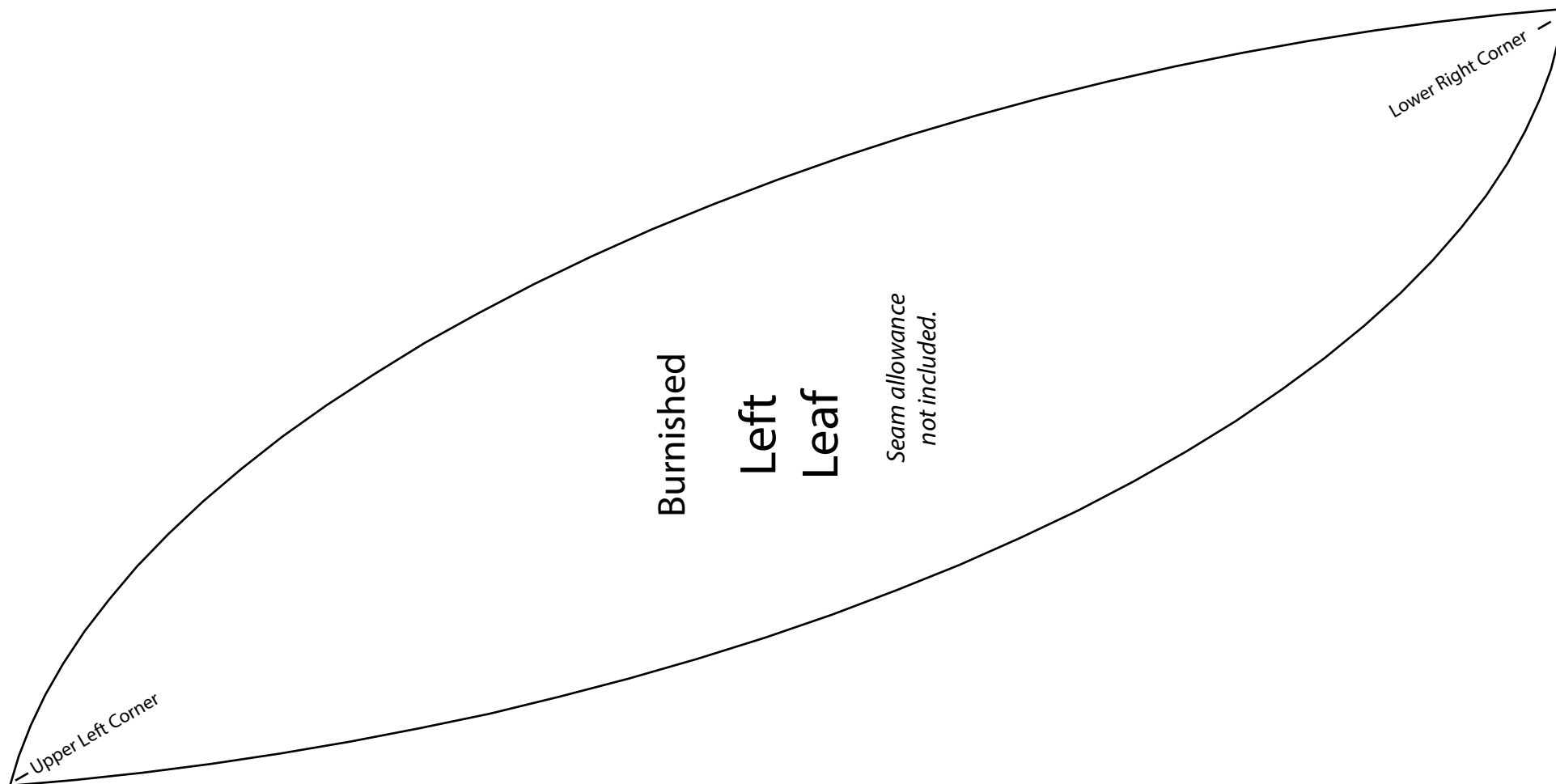
Row 2



Row 3

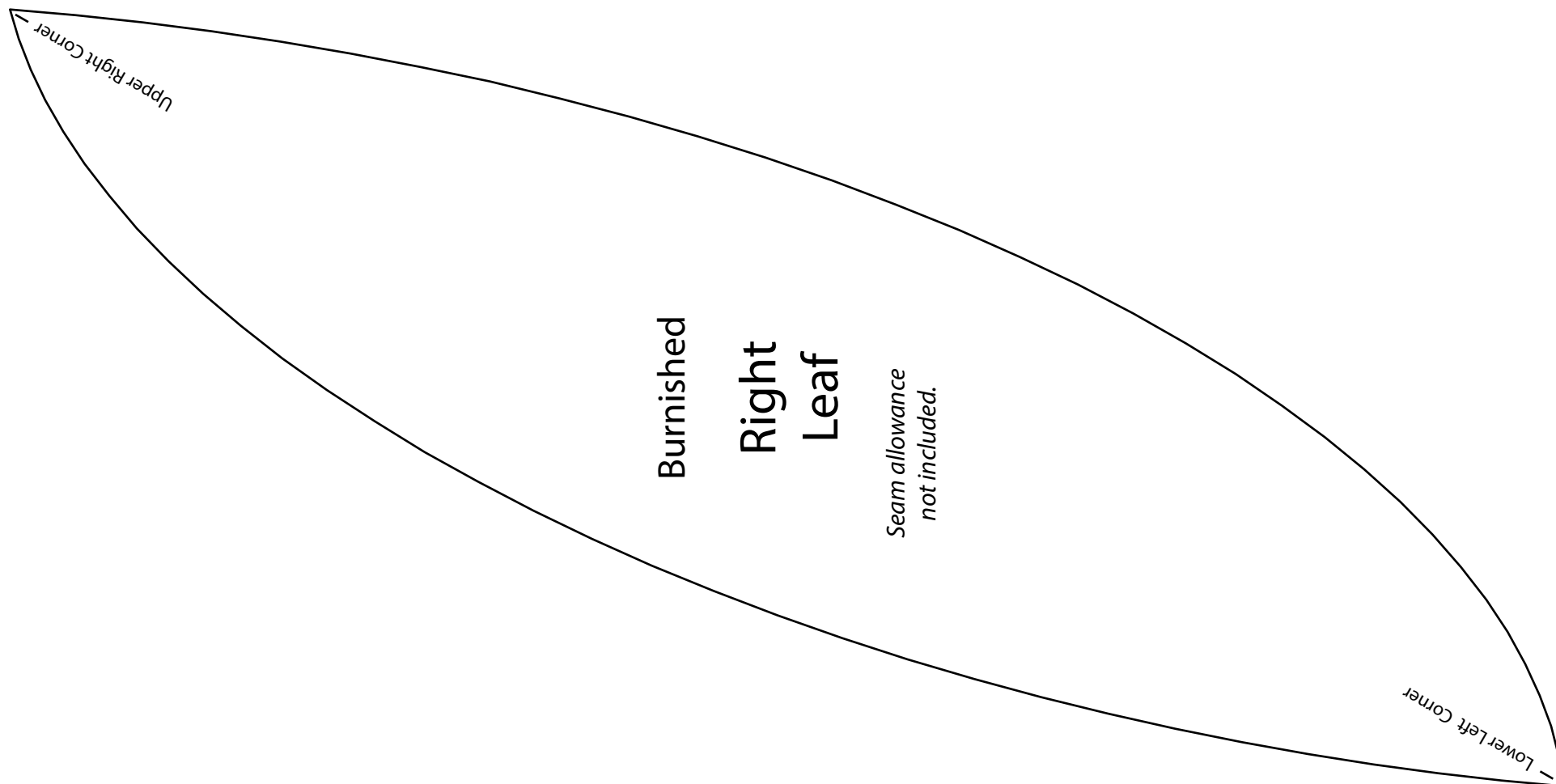


Row 4



This square should
measure 1" x 1"
(2.54cm x 2.54cm)
when printed.

***** Measure templates before cutting to confirm printing at 100%*****



This square should
measure 1" x 1"
(2.54cm x 2.54cm)
when printed.

***** Measure templates before cutting to confirm printing at 100%*****