



Free Spirit 

Fleur Quilt

Featuring Pink Palette by Tim Holtz

Create the feeling of a romantic getaway with the soft floral motif of Fleur, featuring the Pink Palette fabrics of Tim Holtz.

| | |
|------------------------|-----------------------------------------------------------------------------------------------------------------|
| Collection: | Pink Palette by Tim Holtz |
| Technique: | Pieced, Foundation Paper Pieced, and Applique method of your choice |
| Skill Level: | Intermediate |
| Finished Sizes: | Finished Size: 68" x 85" (1.73m x 2.16m) Finished Block Size: 12" square (30.5cm square) |

All possible care has been taken to ensure the accuracy of this pattern. We are not responsible for printing errors or the manner in which individual work varies. Please read the instructions carefully before starting this project. If kitting, it is recommended a sample is made to confirm accuracy.

Project designed by Kerri Thomson | Tech edited by Alison M. Schmidt

Fabric Requirements

| DESIGN | COLOR | ITEM ID | YARDAGE |
|--------------------------|-------------|--------------------|----------------------------|
| (A) Pink Collage | Pink | PWTH210.PINK | $\frac{3}{8}$ yard (0.34m) |
| (B) Pink Stamps | Pink | PWTH211.PINK | $\frac{3}{8}$ yard (0.34m) |
| (C) Pink Tickets | Pink | PWTH212.PINK | $\frac{3}{8}$ yard (0.34m) |
| (D) Pink Map | Pink | PWTH213.PINK | $\frac{1}{2}$ yard (0.46m) |
| (E) Pink Typography | Pink | PWTH214.PINK | $\frac{7}{8}$ yard (0.80m) |
| (F) Pink Ephemera | Pink | PWTH215.PINK | $\frac{1}{4}$ yard (0.23m) |
| (G) Pink Numbers | Pink | PWTH216.PINK | $\frac{1}{2}$ yard (0.46m) |
| (H) Pink Wallpaper | Pink | PWTH217.PINK | $\frac{1}{2}$ yard (0.46m) |
| (I) Pink Toile | Pink | PWTH218.PINK | $\frac{1}{2}$ yard (0.46m) |
| (J) Pink Vintage | Pink | PWTH219.PINK | $\frac{3}{8}$ yard (0.34m) |
| (K) Cracked Shadow | Adventurine | PWTH128.AVENTURINE | $\frac{1}{2}$ yard (0.46m) |
| (L) Cracked Shadow | Quartz | PWTH128.QUARTZ | $\frac{7}{8}$ yard (0.80m) |
| (M) Provisions | Linen | PWTH115.8LINE | $\frac{3}{4}$ yard (0.69m) |
| (N) Multiplication Table | Parchment | PWTH106.PARCHMENT | $\frac{3}{4}$ yard (0.69m) |
| (O) Symphony | Neutral | PWTH022.NEUTR | $\frac{5}{8}$ yard (0.57m) |
| (P) Rose Parcel | Multi | PWTH035.8MULT | $\frac{5}{8}$ yard (0.57m) |
| (Q) Correspondence | Taupe | PWTH021.TAUPE | $\frac{5}{8}$ yard (0.57m) |
| (R) Butterflies | Parchment | PWTH004.PARCHMENT | $\frac{1}{2}$ yard (0.46m) |
| (S) Botanical | Multi | PWTH028.8MULTI | $\frac{3}{8}$ yard (0.34m) |
| (T) Expedition | Multi | PWTH016.MULTI | $\frac{1}{2}$ yard (0.46m) |



(A)



(B)



(C)



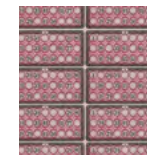
(D)



(E)



(F)



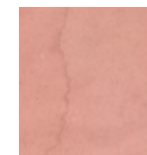
(G)



(H)



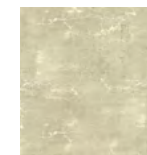
(I)



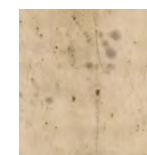
(J)



(K)



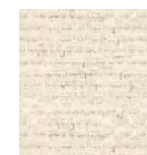
(L)



(M)



(N)



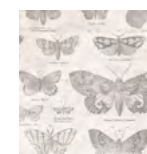
(O)



(P)



(Q)



(R)



(S)



(T)

Continued...

Fabric Requirements (continued...)

| DESIGN | COLOR | ITEM ID | YARDAGE |
|-----------------------|---------|----------------|------------------------------|
| (U) Melange | Neutral | PWTH001.NEUTR | $\frac{3}{8}$ yard (0.34m) |
| (V) Dictionary | Neutral | PWTH008.NEUTR | $\frac{1}{4}$ yard (0.23m) |
| (W) Bouquet | Multi | PWTH014.MULTI | $1\frac{5}{8}$ yards (1.49m) |
| (X) Worn Croc | Bayou | PWTH020.BAYOU* | $\frac{5}{8}$ yard (0.57m) |



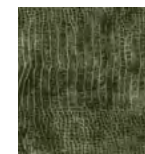
(U)



(V)



(W)



(X)

* includes binding

Backing (Purchased Separately)

44" (1.12m) wide

Pink Ephemera

Pink

PWTH215.PINK

$5\frac{1}{4}$ yards (4.80m)

OR

108" (2.74m) wide

Expedition

Multi

QBTH007.MULTI

$2\frac{1}{8}$ yards (1.94m)



Backing
44"



Backing
108"

Additional Recommendations

- 100% cotton thread in colors to match
- 76" x 93" (1.93m x 2.36m) batting
- (23) 8½" x 11" sheets of foundation paper
- Freezer paper
- Thread for appliqué in a color to blend

Preparation

1. Print 1 copy each of both the Large and Small Petal template patterns (page 8) at 100% and measure to confirm accuracy of printout. Print 23 copies of the Stem foundation pattern (page 9) on your preferred foundation paper.
2. Trace the required number of Large and/or Small Petal templates onto the flat side of the freezer paper and cut out on the drawn line. Transfer the marks and grain line from the templates.
3. To cut petals in quantities listed in Cutting (shown right), on an ironing surface, arrange the templates, shiny side down, on the wrong side of the fabric with the grain line along the width of fabric, leaving room for a ¼" seam allowance between the petals. The templates will need to be placed facing left and right to fit all of them on the yardage. Once the templates are arranged, use a hot dry iron to temporarily adhere the freezer paper in place. Cut around the templates adding a ¼" seam allowance.

Cutting

WOF = Width of Fabric

Group the Large Petals by fabrics into sets of three petals and the Small Petals into sets of four petals.

Fabric A, cut:
(24) Small Petals

Fabric B, cut:
(18) Large Petals

Fabric C, cut:
(20) Small Petals

Fabric D, cut:
(15) Large Petals
(16) Small Petals

Fabric E, cut:
(1) 6½" x WOF; subcut
(4) 6½" squares
(1) 5" x WOF; subcut
(2) 5" x 9½"
rectangles
(12) Large Petals
(24) Small Petals

Fabric F, cut:
(16) Small Petals

Fabric G, cut:
(12) Large Petals
(20) Small Petals

Fabrics H and I, cut from each:
(32) Small Petals

Fabric J, cut:
(12) Large Petals

Fabric K, cut:
(6) 2¼" x WOF; subcut
(23) 2¼" x 10"
rectangles for the
stems

Fabric L, cut:
(4) 6½" x WOF; subcut
(19) 6½" squares
(2) 5" x 9½"
rectangles

Fabric M, cut:
(2) 6½" x WOF; subcut
(9) 6½" squares
(2) 5" x WOF; subcut
(8) 5" x 9½"
rectangles

Fabric N, cut:
(2) 6½" x WOF; subcut
(8) 6½" squares
(2) 5" x WOF; subcut
(6) 5" x 9½"
rectangles

Fabric O, cut:
(2) 6½" x WOF; subcut
(12) 6½" squares
(1) 5" x WOF; subcut
(2) 5" x 9½"
rectangles

Fabrics P and Q, cut from each:
(2) 6½" x WOF; subcut
(9) 6½" squares
(1) 5" x WOF; subcut
(4) 5" x 9½"
rectangles

Fabric R, cut:
(1) 6½" x WOF; subcut
(4) 6½" squares
(2) 5" x WOF; subcut
(8) 5" x 9½"
rectangles

Fabric S, cut:
(1) 6½" x WOF; subcut
(6) 6½" squares
(1) 5" x WOF; subcut
(4) 5" x 9½"
rectangles

Fabric T, cut:
(2) 6½" x WOF; subcut
(8) 6½" squares
(2) 5" x 9½"
rectangles

Fabric U, cut:
(1) 6½" x WOF; subcut
(5) 6½" squares
(1) 5" x WOF; subcut
(4) 5" x 9½" rectangles

Fabric V, cut:
(1) 6½" x WOF; subcut
(4) 6½" squares

Fabric W, cut:
(2) 18¼" x WOF; subcut
(3) 18¼" squares, cut
along both diagonals
for (12*) Setting
Triangles, and (4) 6½"
squares
(1) 17⅞" x WOF; subcut
(2) 17⅞" squares, cut
along one diagonal
for (4) Corner
Triangles

*There will be 2 extra
triangles.

Fabric X, cut:
(9) 2½" x WOF for
binding

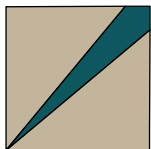
Instructions

- All seam allowances are $\frac{1}{4}$ " and pieces are sewn right sides together unless otherwise stated. This pattern assumes a basic knowledge of foundation piecing and appliqué.
- This quilt is pieced for a scrappy vintage feel. Select background and petal fabric combinations that are pleasing to you for a unique quilt or use the **Quilt Layout** diagram as a guide for fabric placement.

Stem Units

1. Using your preferred method of foundation piecing, piece (23) Stem foundations with **Fabric K** Stems and **Fabrics E** and **K-V** for the background, following the numerical order and fabric sizes on the paper foundation. (**Fig. 1**)

Fig. 1



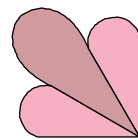
Stem Foundation
Make 23

2. Trim each block to $6\frac{1}{2}$ " square, cutting on the outside line of each paper foundation, and then carefully remove the paper.

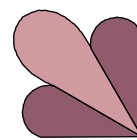
Fleur Blocks

3. Select (3) $6\frac{1}{2}$ " squares, (1) Stem foundation, (1) set of Large Petals and (2) sets of Small Petals per block. Make 23 block sets.
4. Place (1) Large and (1) Small Petal right sides together, matching the raw edges. Starting at the mark on the freezer paper sew down one straight edge. Press the seam allowance open. Repeat to sew a second Small Petal from the same set to the other side of the Large Petal. Repeat to make (2) matching Side Petal fans and (1) Center Petal fan. (**Fig. 2**) There will be (2) Small Petals from one set left over.

Fig. 2



Side Petal Fan
Make 2

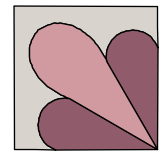
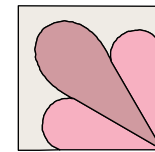
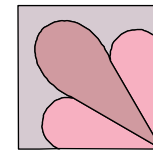


Center Petal Fan
Make 1

5. Lightly starch the outside curved seam allowance of the attached petals. Thread a hand needle with a length of thread and sew a running stitch around one curved end of the petals within the seam allowance, leaving thread tails at the seam between the petals. Pull both ends of the running stitch so that the seam allowance gathers around the freezer paper template. Press the fabric curve to the wrong side. Repeat with all the petals on the fans. Once the starch is set and the fans are dry, remove the running stitches and freezer paper.

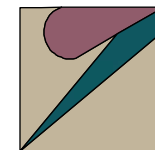
6. Place the fans right side up, on the right side of the $6\frac{1}{2}$ " squares, matching the raw edges. Pin in place. Machine baste along the straight edges within the $\frac{1}{4}$ " seam allowance and then hand or machine appliqué along the curved edges of the petals to secure the fans to the $6\frac{1}{2}$ " squares. (**Fig. 3**)

Fig. 3



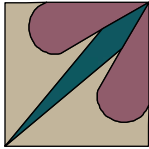
7. Fold under the seam allowance along a straight edge of (1) remaining Small Petal and press. Repeat Step 5 to turn under the curved edge. Place the petal right side up, so the turned straight edge overlaps one wide end of the Stem, aligning the raw edge of the petal with raw edge of the stem unit. (**Fig. 4**) Machine baste along the raw straight edge within the $\frac{1}{4}$ " seam allowance and then hand or machine appliqué along the curved edge and then down the turned straight edge.

Fig. 4



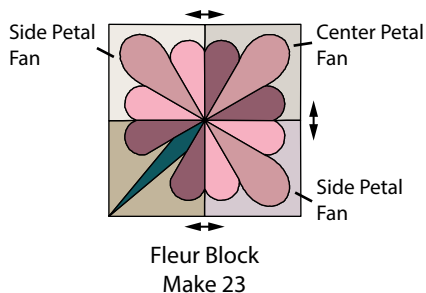
8. Repeat the process in Step 7, folding under the opposite straight edge of the remaining Small Petal and placing it on the opposite side of the wide end of the stem. (**Fig. 5**)

Fig. 5



9. Sew the (3) Petal fans and the Stem together in a four patch, placing the Center Petal fan diagonal to the Stem, to complete (1) Fleur Block (12½" square). (**Fig. 6**) Press the seams open.

Fig. 6

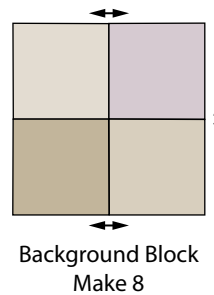


10. Repeat Steps 4 to 9 to make a total of (23) Fleur Blocks. There will be (32) 6½" squares left over for the Background Blocks.

Background Blocks

11. Select 8 sets of (4) of the remaining 6½" squares.
12. Sew sets together into a four-patch to complete (1) Background Block (12½" square). (**Fig. 7**) Press the seams open. Repeat to make (8) Background Blocks.

Fig. 7



Quilt Top Assembly

Note: Follow the **Quilt Layout** diagram (page 7) while assembling the quilt.

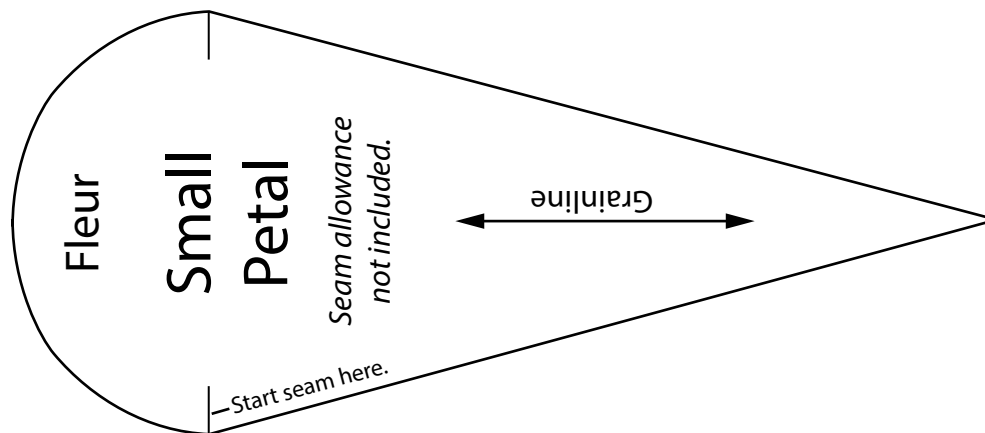
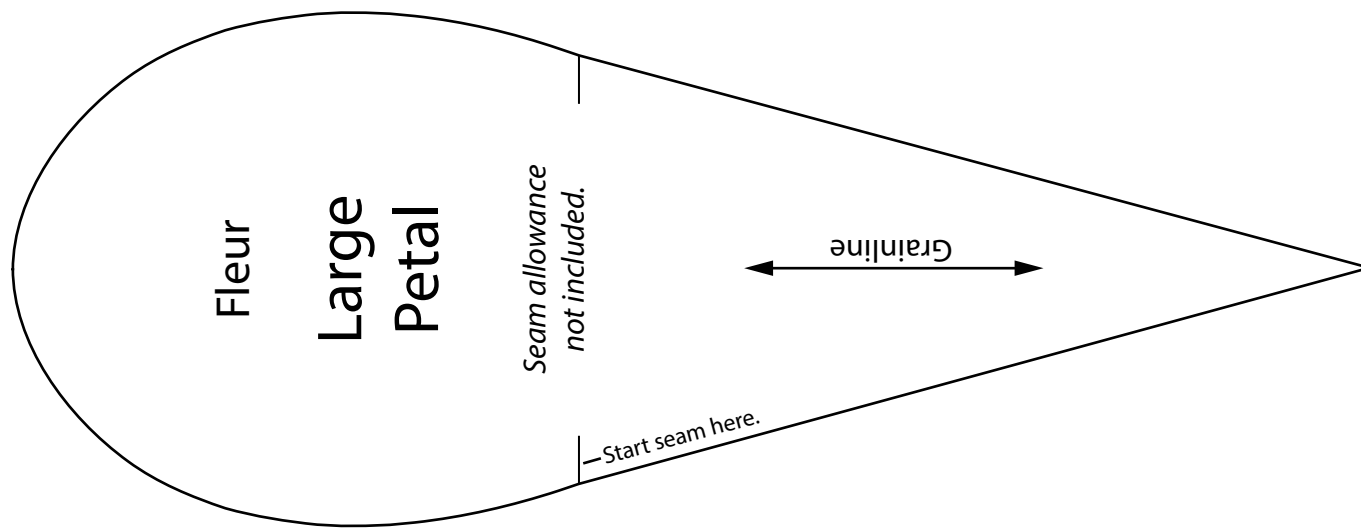
13. Lay out the Fleur and Background Blocks and Setting Triangles.
14. Sew together into diagonal rows.
15. Sew the rows together.
16. Sew the Corner Triangles to the sewn rows to complete the Quilt Top (68" x 85").

Finishing

17. Sew together the 2½" **Fabric X** binding strips end to end using diagonal seams. Press seams open. Press the binding strip in half wrong sides together.
18. Layer backing (wrong side up), batting, and quilt top (right side up). Baste the layers together and quilt as desired. Trim excess batting and backing even with the top after quilting is completed.
19. Leaving an 8" tail of binding, sew the binding to the top of the quilt through all layers matching all raw edges. Miter corners. Stop approximately 12" from where you started. Lay both loose ends of binding flat along quilt edge. Where the loose ends meet, fold them back on themselves and press to form a crease. Using this crease as your stitching line, sew the two open ends of the binding right sides together. Trim seam to ¼" and press open. Finish sewing binding to quilt.
20. Turn the binding to the back of quilt and hand-stitch in place.

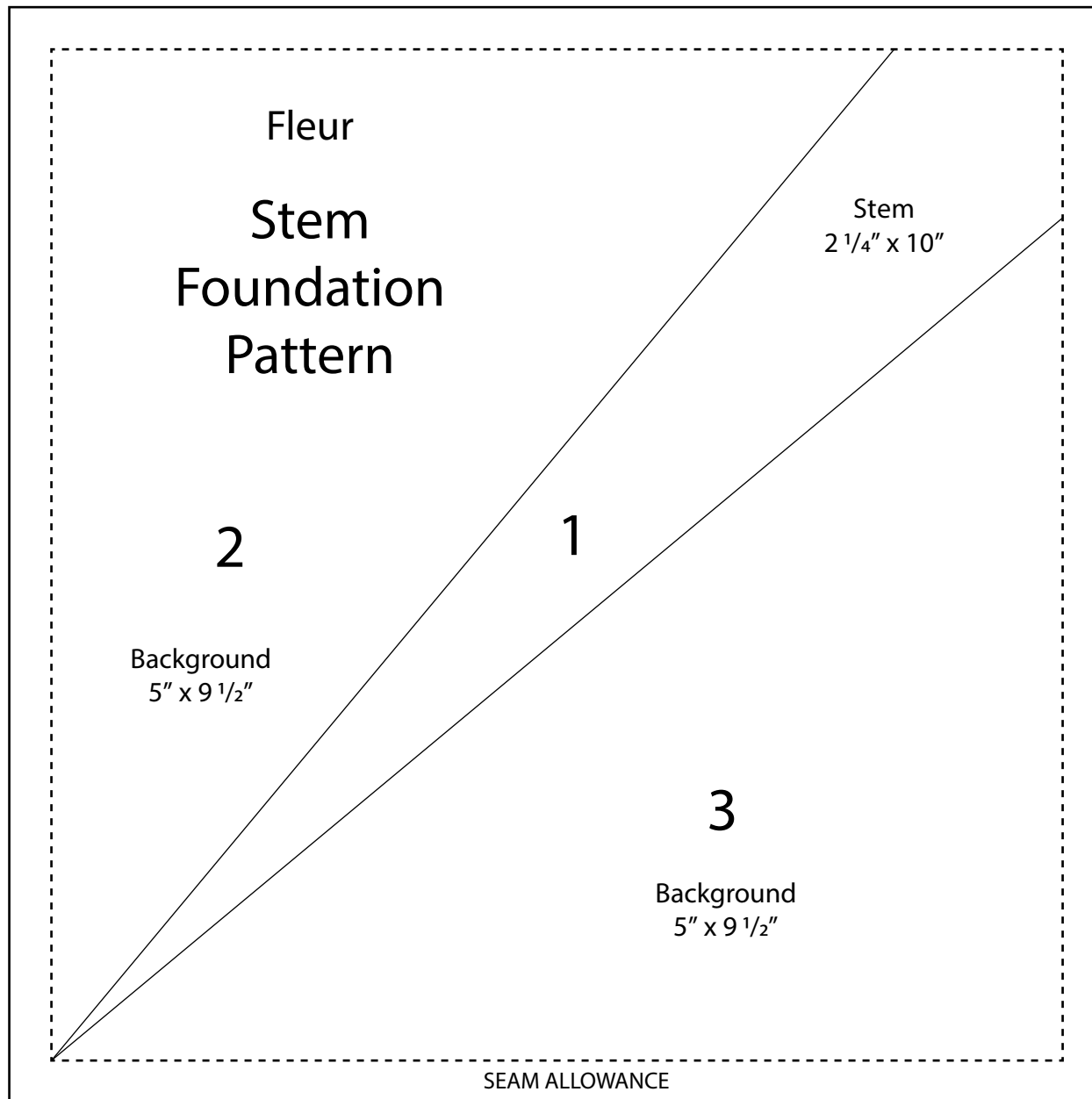
Quilt Layout





This square should
measure 1" x 1"
(2.54cm x 2.54cm)
when printed.

*** Measure templates before cutting to confirm printing at 100%***



This square should
measure 1" x 1"
(2.54cm x 2.54cm)
when printed.

*** Measure templates before cutting to confirm printing at 100%***