



Free Spirit

Ripples Quilt

Featuring Teal Palette by Tim Holtz

Butterflies dance in ripples of teal, featuring the Teal Palette fabrics of Tim Holtz.

Collection: Teal Palette by Tim Holtz

Technique: Curved Piecing

Skill Level: Intermediate

Finished Sizes:

Finished Size:
70" x 80" (1.78m x 2.03m)

Finished Block Size:
14" x 8" (35.56cm x 20.32cm)

All possible care has been taken to ensure the accuracy of this pattern. We are not responsible for printing errors or the manner in which individual work varies. Please read the instructions carefully before starting this project. If kitting, it is recommended a sample is made to confirm accuracy.

Project designed by Kerri Thomson | Tech edited by Alison M. Schmidt

Fabric Requirements

DESIGN	COLOR	ITEM ID	YARDAGE
(A) Teal Collage	Teal	PWTH270.TEAL	$\frac{7}{8}$ yard (0.80m)
(B) Teal Stamps	Teal	PWTH271.TEAL	$\frac{3}{4}$ yard (0.69m)
(C) Teal Tickets	Teal	PWTH272.TEAL	1½ yards (1.37m)
(D) Teal Map	Teal	PWTH273.TEAL	1½ yards (1.03m)
(E) Teal Tiles	Teal	PWTH274.TEAL	$\frac{7}{8}$ yard (0.80m)
(F) Teal Ephemera	Teal	PWTH275.TEAL*	2¼ yards (2.06m)
(G) Teal Butterflies	Teal	PWTH276.TEAL	$\frac{7}{8}$ yard (0.80m)
(H) Teal Wallpaper	Teal	PWTH277.TEAL	1½ yards (1.03m)
(I) Teal Tiny Print	Teal	PWTH278.TEAL	1½ yards (1.03m)
(J) Teal Marble	Teal	PWTH279.TEAL	1 yard (0.91m)
(K) Cracked Shadow	Adventurine	PWTH128.ADVENTURINE	$\frac{5}{8}$ yard (0.57m)
(L) Provisions	Patina	PWTH115.PATINA	$\frac{5}{8}$ yard (0.57m)
(M) Receipt	Aqua	PWTH102.AQUA	$\frac{7}{8}$ yard (0.80m)

* includes binding

Backing (Purchased Separately)

44" (1.12m) wide

Teal Tickets	Teal	PWTH272.TEAL	5 yards (4.57m)
--------------	------	--------------	-----------------

OR

108" (2.74m) wide

Receipt	Aqua	QBTH010.AQUA	2¼ yards (2.06m)
---------	------	--------------	------------------



(A)



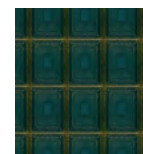
(B)



(C)



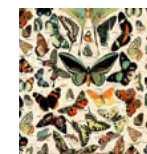
(D)



(E)



(F)



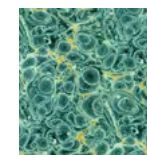
(G)



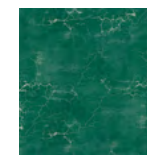
(H)



(I)



(J)



(K)



(L)



(M)



Backing
44"



Backing
108"

Additional Recommendations

- 100% cotton thread in colors to match
- 78" x 88" (1.98m x 2.24m) batting
- **Optional:** (3 - 4) 12" x 18" sheets of template plastic

Preparation

1. Print 1 copy each of all the template patterns (pages 13-17) at 100%. Measure the 1" squares to make sure the templates printed the correct size. Cut out and join the pieces for templates 5, 6, and 7 as noted on the patterns.
2. Trace all the template patterns onto template plastic, copy the markings, and cut out on the outer line.

Cutting

WOF = Width of Fabric

Note: If you have less experience piecing curves, consider making a test block with scraps, making sure to use an accurate $\frac{1}{4}$ " seam allowance.

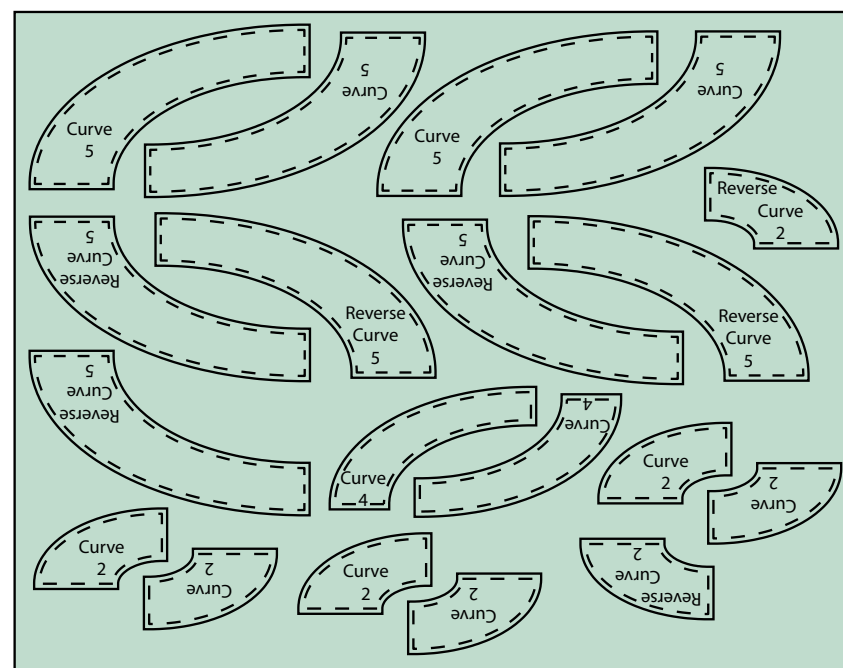
Cutting Curve Templates

- To cut the Curve pieces, place the template right side up on the right side of a single layer of fabric. To cut the Reverse Curve pieces, place the template **wrong** side up on the right side of a single layer of fabric.
- Cutting diagrams are provided as a guide on how to fit the listed Curves on each fabric. Following the cutting diagrams will ensure you have enough fabric to make the quilt as shown. However, this quilt is designed for a scrappy feel, so ultimately what is needed are 34 of each Curve 1-7 and 16 of each Reverse Curve 1-7, plus binding as listed.

Fabric A, cut:

- | | |
|---------------------|---------------------|
| (4) Curve 5 | (6) Curve 2 |
| (5) Reverse Curve 5 | (2) Reverse Curve 2 |
| (2) Curve 4 | |

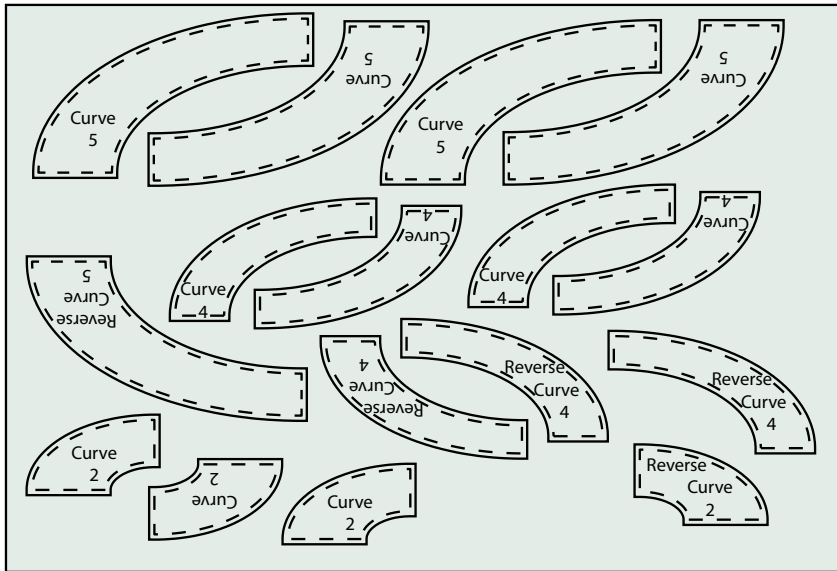
Fabric A Cutting Diagram



Fabric B, cut:

- (4) Curve 5
- (1) Reverse Curve 5
- (4) Curve 4
- (3) Reverse Curve 4
- (3) Curve 2
- (1) Reverse Curve 2

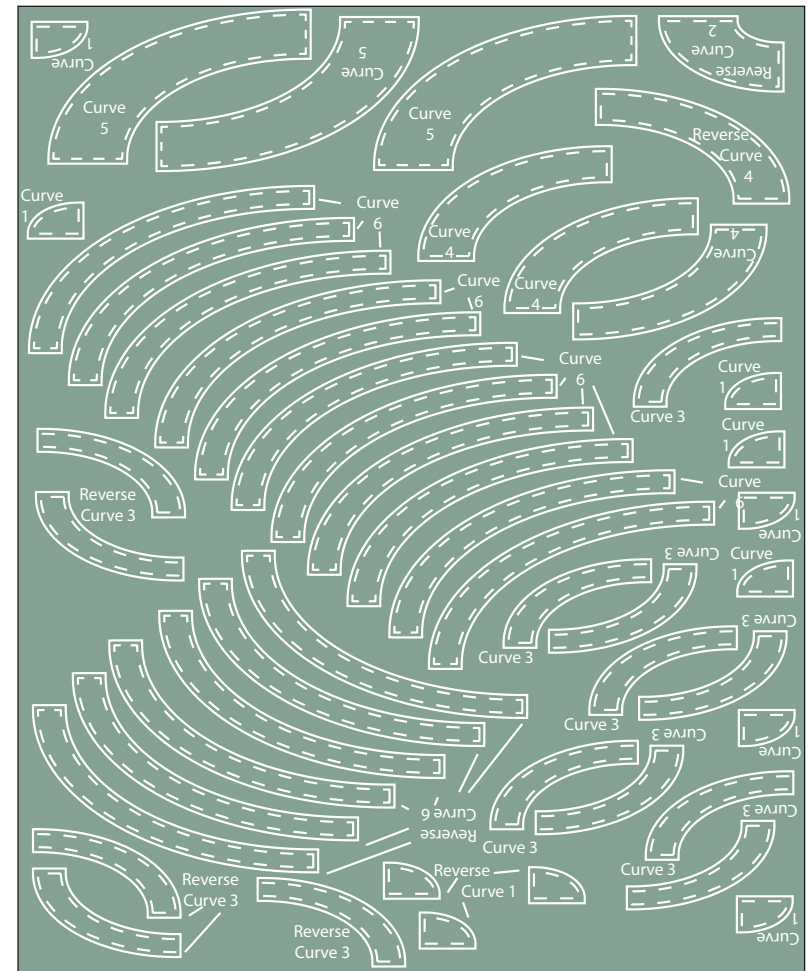
Fabric B Cutting Diagram



Fabric C, Cut:

- (119) Curve 6
- (65) Reverse Curve 6
- (3) Curve 5
- (3) Curve 4
- (1) Reverse Curve 4
- (9) Curve 3
- (5) Reverse Curve 3
- (1) Reverse Curve 2
- (8) Curve 1
- (3) Reverse Curve 1

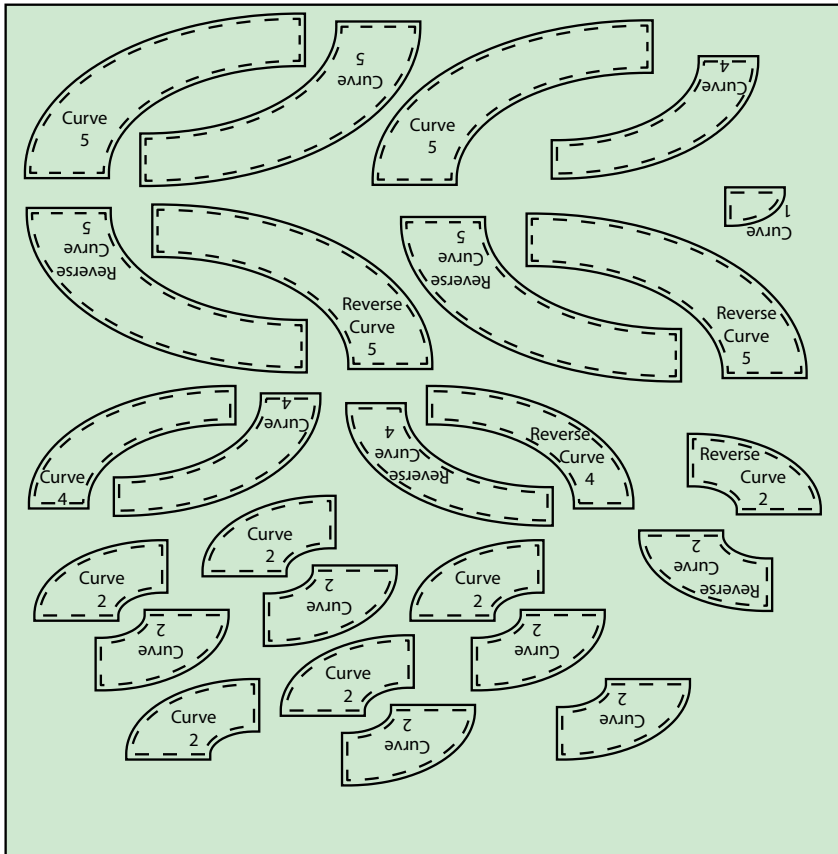
Fabric C Cutting Diagram



Fabric D, cut:

- (3) Curve 5
- (4) Reverse Curve 5
- (3) Curve 4
- (2) Reverse Curve 4
- (10) Curve 2
- (2) Reverse Curve 2
- (1) Curve 1

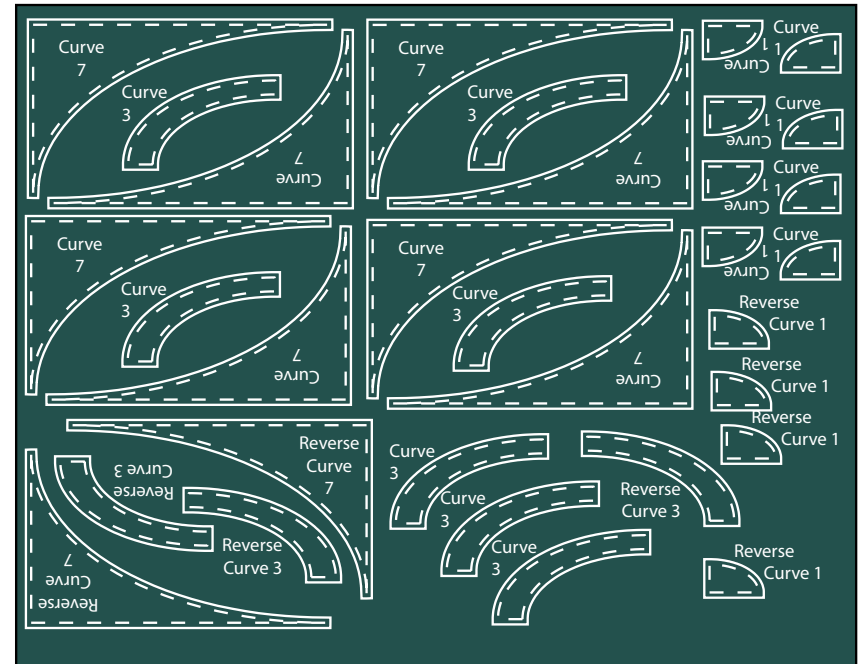
Fabric D Cutting Diagram



Fabric E, cut:

- (8) Curve 7
- (2) Reverse Curve 7
- (7) Curve 3
- (3) Reverse Curve 3
- (8) Curve 1
- (4) Reverse Curve 1

Fabric E Cutting Diagram

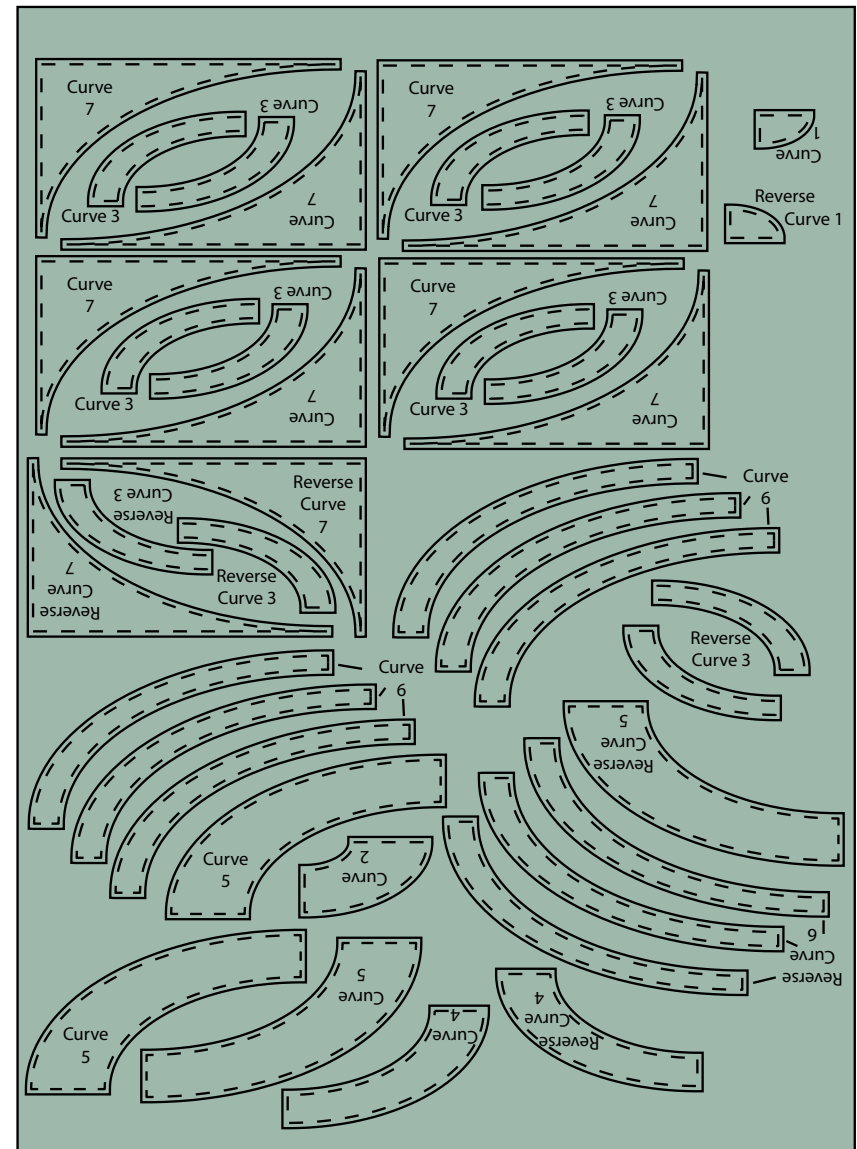


Fabric F, cut:

- | | |
|---------------------------|---------------------|
| (8) 2½" x WOF for binding | (1) Curve 4 |
| (8) Curve 7 | (1) Reverse Curve 4 |
| (2) Reverse Curve 7 | (8) Curve 3 |
| (57) Curve 6 | (4) Reverse Curve 3 |
| (34) Reverse Curve 6 | (1) Curve 2 |
| (3) Curve 5 | (1) Curve 1 |
| (1) Reverse Curve 5 | (1) Reverse Curve 1 |

Fabric F Cutting Diagram

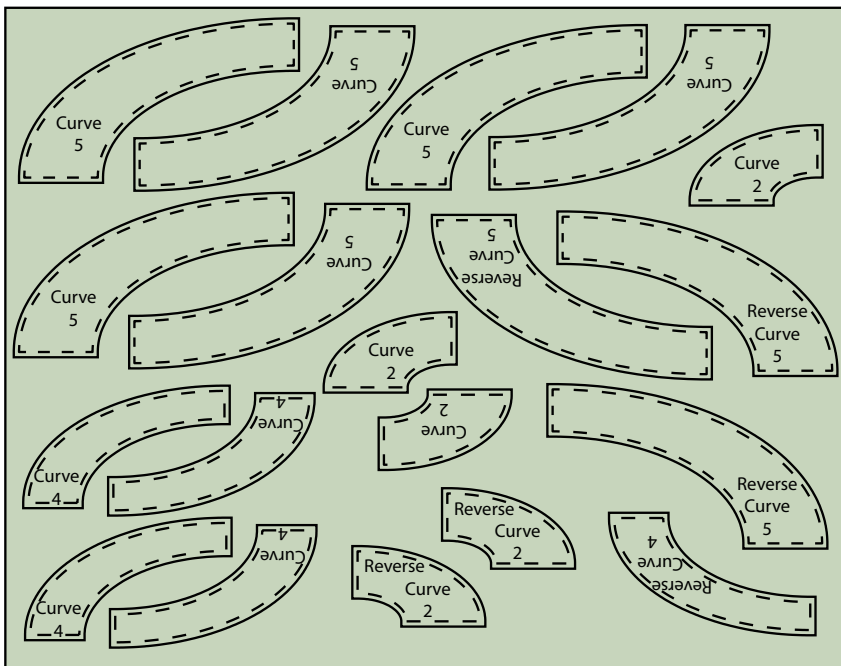
Cut Binding stripes first, then cut Curves.



Fabric G, cut:

- (6) Curve 5
- (3) Reverse Curve 5
- (4) Curve 4
- (1) Reverse Curve 4
- (3) Curve 2
- (2) Reverse Curve 2

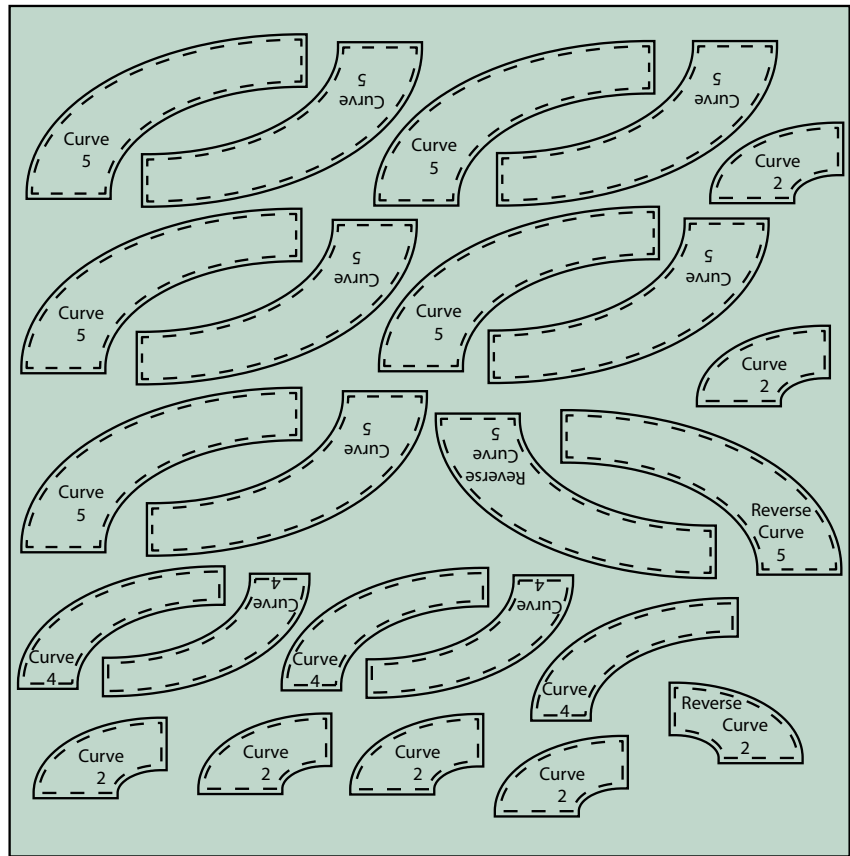
Fabric G Cutting Diagram



Fabric H, cut:

- (10) Curve 5
- (2) Reverse Curve 5
- (5) Curve 4
- (6) Curve 2
- (1) Reverse Curve 2

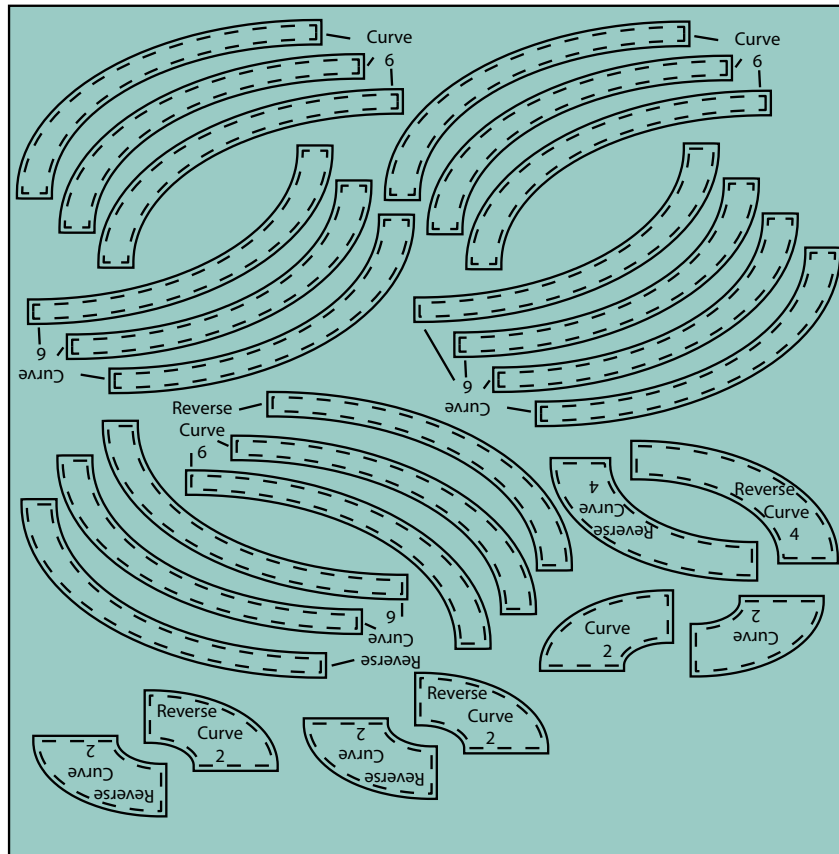
Fabric H Cutting Diagram



Fabric I, cut:

- (13) Curve 6
- (6) Reverse Curve 6
- (2) Reverse Curve 4
- (2) Curve 2
- (4) Reverse Curve 2

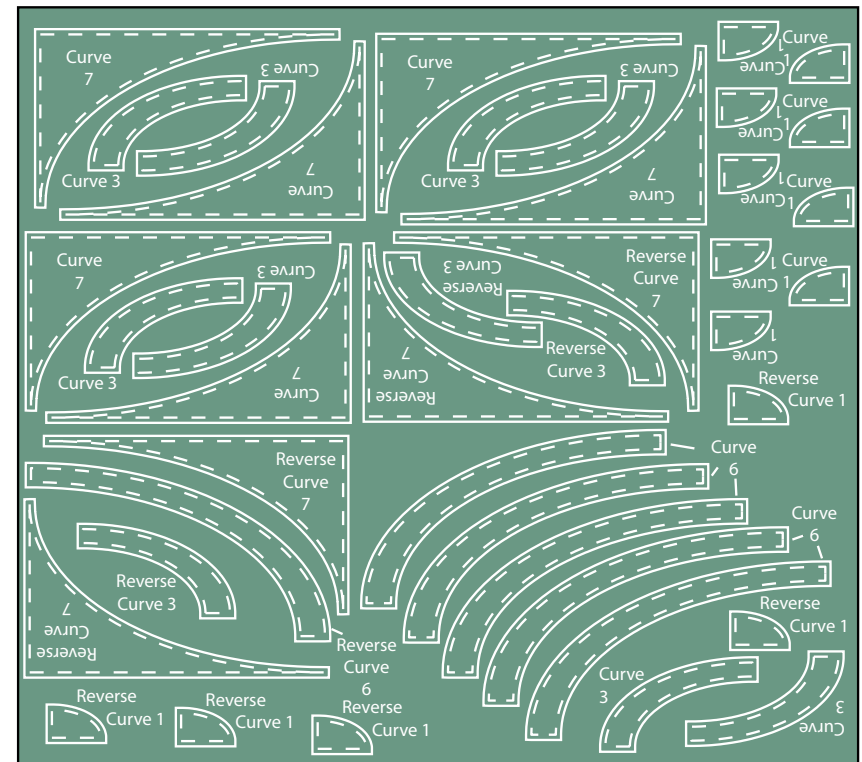
Fabric I Cutting Diagram



Fabric J, cut:

- (6) Curve 7
- (4) Reverse Curve 7
- (5) Curve 6
- (1) Reverse Curve 6
- (8) Curve 3
- (3) Reverse Curve 3
- (9) Curve 1
- (5) Reverse Curve 1

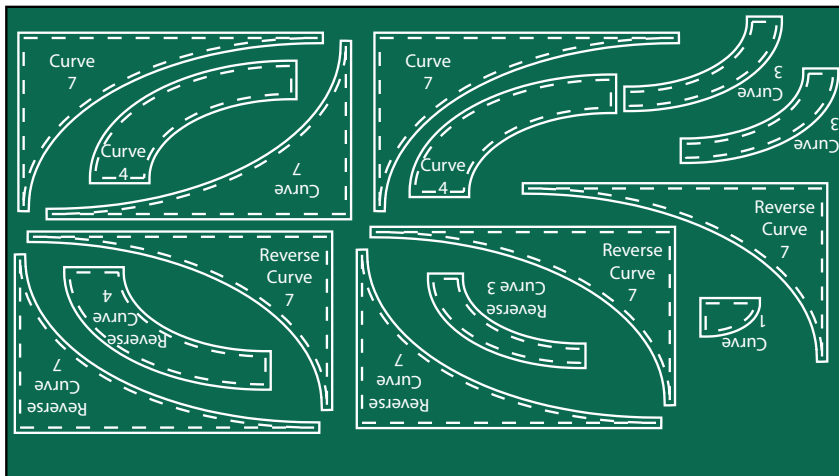
Fabric J Cutting Diagram



Fabric K, cut:

- (3) Curve 7
- (5) Reverse Curve 7
- (2) Curve 4
- (1) Reverse Curve 4
- (2) Curve 3
- (1) Reverse Curve 3
- (1) Curve 1

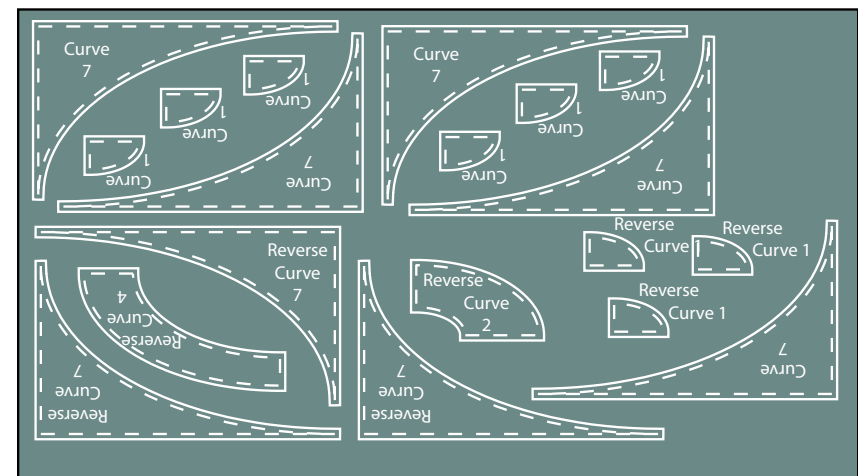
Fabric K Cutting Diagram



Fabric L, cut:

- (5) Curve 7
- (3) Reverse Curve 7
- (1) Reverse Curve 4
- (1) Reverse Curve 2
- (6) Curve 1
- (3) Reverse Curve 1

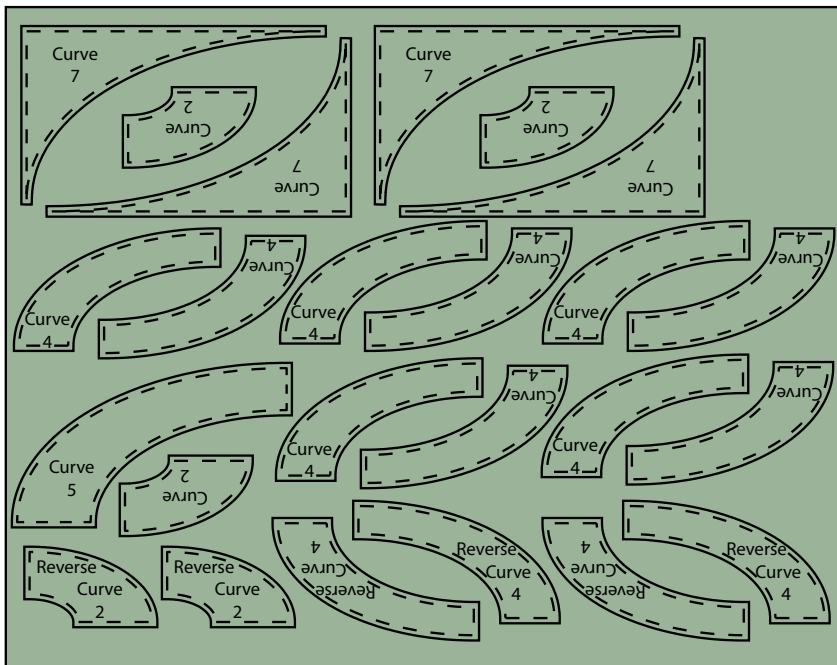
Fabric L Cutting Diagram



Fabric M, cut:

- | | |
|--------------|---------------------|
| (4) Curve 7 | (4) Reverse Curve 4 |
| (1) Curve 5 | (3) Curve 2 |
| (10) Curve 4 | (2) Reverse Curve 2 |

Fabric M Cutting Diagram



Instructions

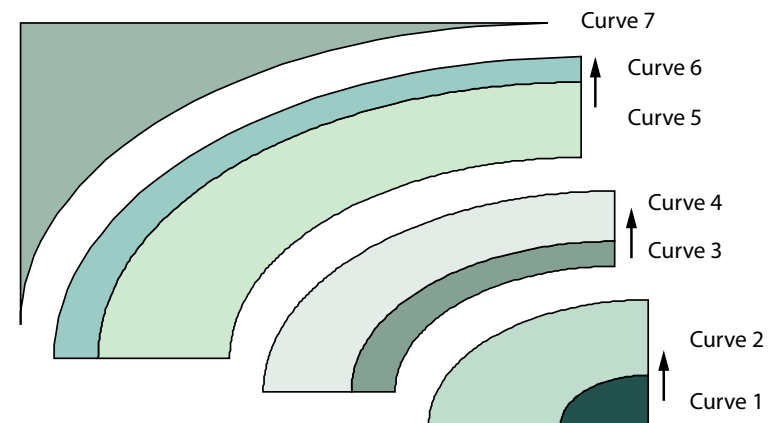
Notes:

- All seam allowances are $\frac{1}{4}$ " and pieces are sewn right sides. Press seams following the arrows in the diagrams. This pattern assumes a basic knowledge of curved piecing.
- This quilt is pieced for a scrappy vintage feel. Select Curve fabric combinations that are pleasing to you for a unique quilt or use the **Quilt Layout** diagram as a guide for fabric placement.

Ripples Blocks

- Select (1) each Curve 1 through 7.
- Sew the Curve 1 to Curve 2, Curve 3 to Curve 4 and Curve 5 to Curve 6. (**Fig. 1**)

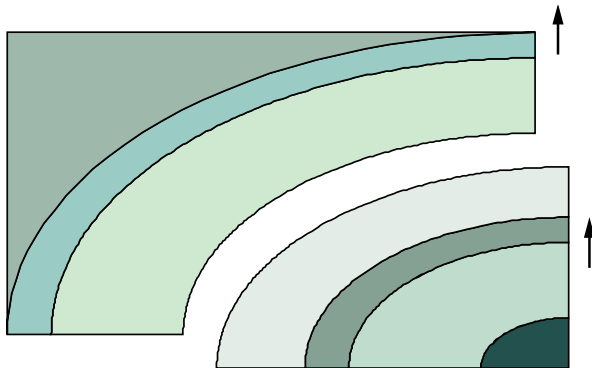
Fig 1



Tip: Sew with the convex (outside) curve, in this case the odd numbered Curve piece, against the bed of the sewing machine, pinning the curves together at the beginning, end, and center, matching the raw edges in between while sewing the seam.

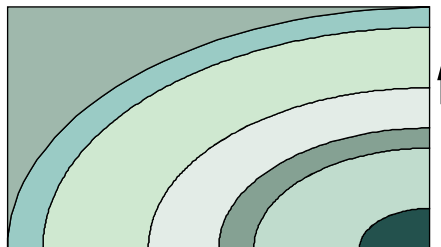
3. Sew the Curve $\frac{1}{2}$ pair to the Curve $\frac{3}{4}$ pair and the Curve $\frac{5}{8}$ pair to the Curve 7. (**Fig. 2**)

Fig. 2



4. Sew the (2) units from the previous step together to complete (1) Ripples Block ($14\frac{1}{2}$ " x $8\frac{1}{2}$ "). (**Fig. 3**)

Fig. 3



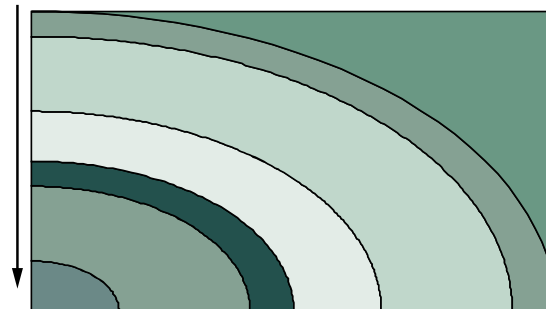
Ripples Block
Make 34

5. Repeat Steps 1 to 4 to make (34) Ripples Blocks.

Reverse Blocks

6. Select (1) each Reverse Curve 1 through 7.
7. Repeat the process in Steps 2 to 4 to complete (1) Reverse Block ($8\frac{1}{2}$ " x $14\frac{1}{2}$ "). (**Fig. 4**)

Fig. 4



Reverse Block
Make 16

8. Repeat Steps 6 and 7 to make (16) Reverse Blocks.

Quilt Top Assembly

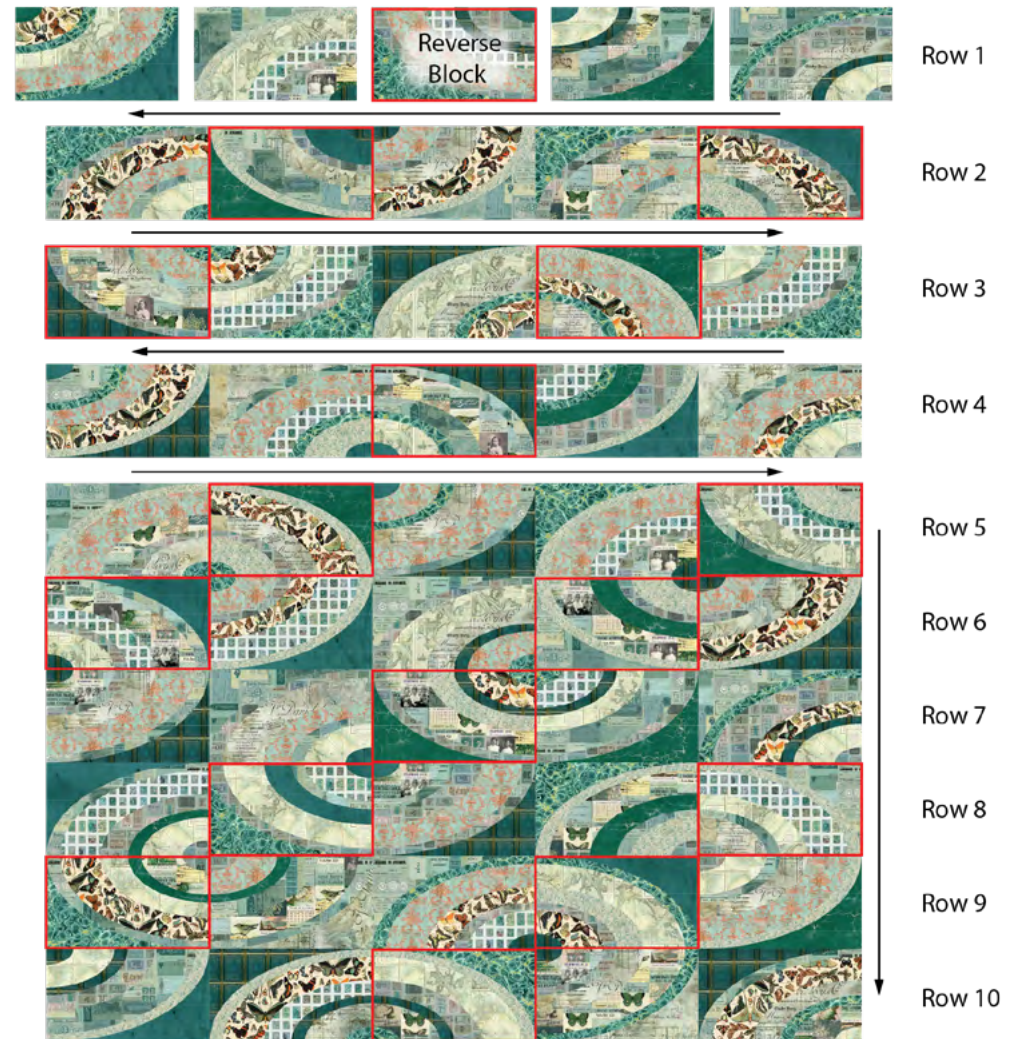
Note: Follow the **Quilt Layout** diagram (page 12) while assembling the quilt.

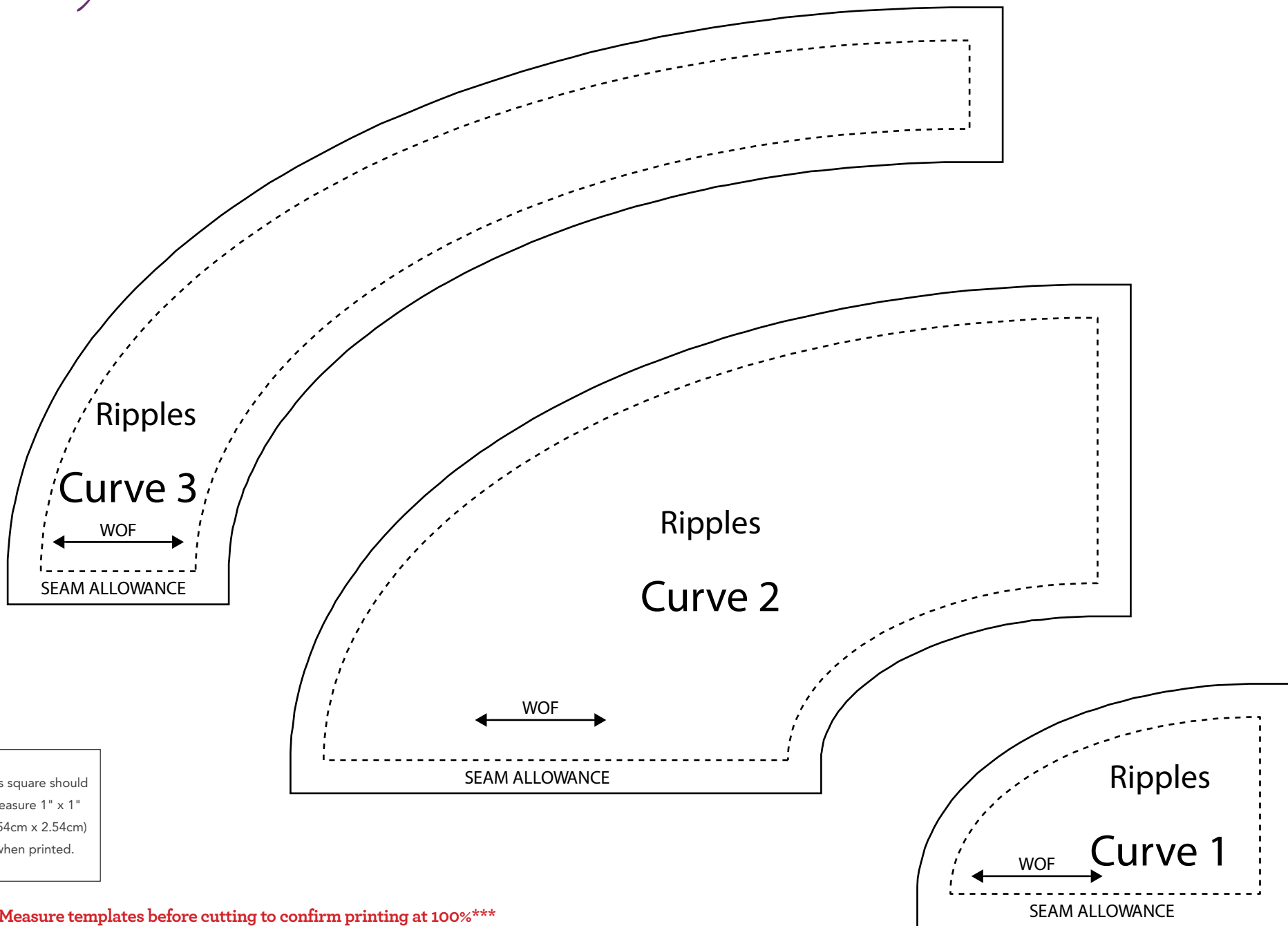
9. Lay out the Ripples and Reverse Blocks, rotating the Blocks to match the orientation shown, in (10) Rows of (5) Blocks. Reverse blocks are designated by a red outline in the layout diagram and will create staggered diagonals from the upper right to lower left side of the quilt top.
10. Sew the Blocks of each Row together. Press the seams of the odd rows to the left and the even rows to the right.
11. Sew the Rows together to complete the Quilt Top (70½" x 80½").

Finishing

12. Sew together the 2½" **Fabric F** binding strips end to end using diagonal seams. Press seams open. Press the binding strip in half wrong sides together.
13. Layer backing (wrong side up), batting, and quilt top (right side up). Baste the layers together and quilt as desired. Trim excess batting and backing even with the top after quilting is completed.
14. Leaving an 8" tail of binding, sew the binding to the top of the quilt through all layers matching all raw edges. Miter corners. Stop approximately 12" from where you started. Lay both loose ends of binding flat along quilt edge. Where the loose ends meet, fold them back on themselves and press to form a crease. Using this crease as your stitching line, sew the two open ends of the binding right sides together. Trim seam to ¼" and press open. Finish sewing binding to quilt.
15. Turn the binding to the back of quilt and hand-stitch in place.

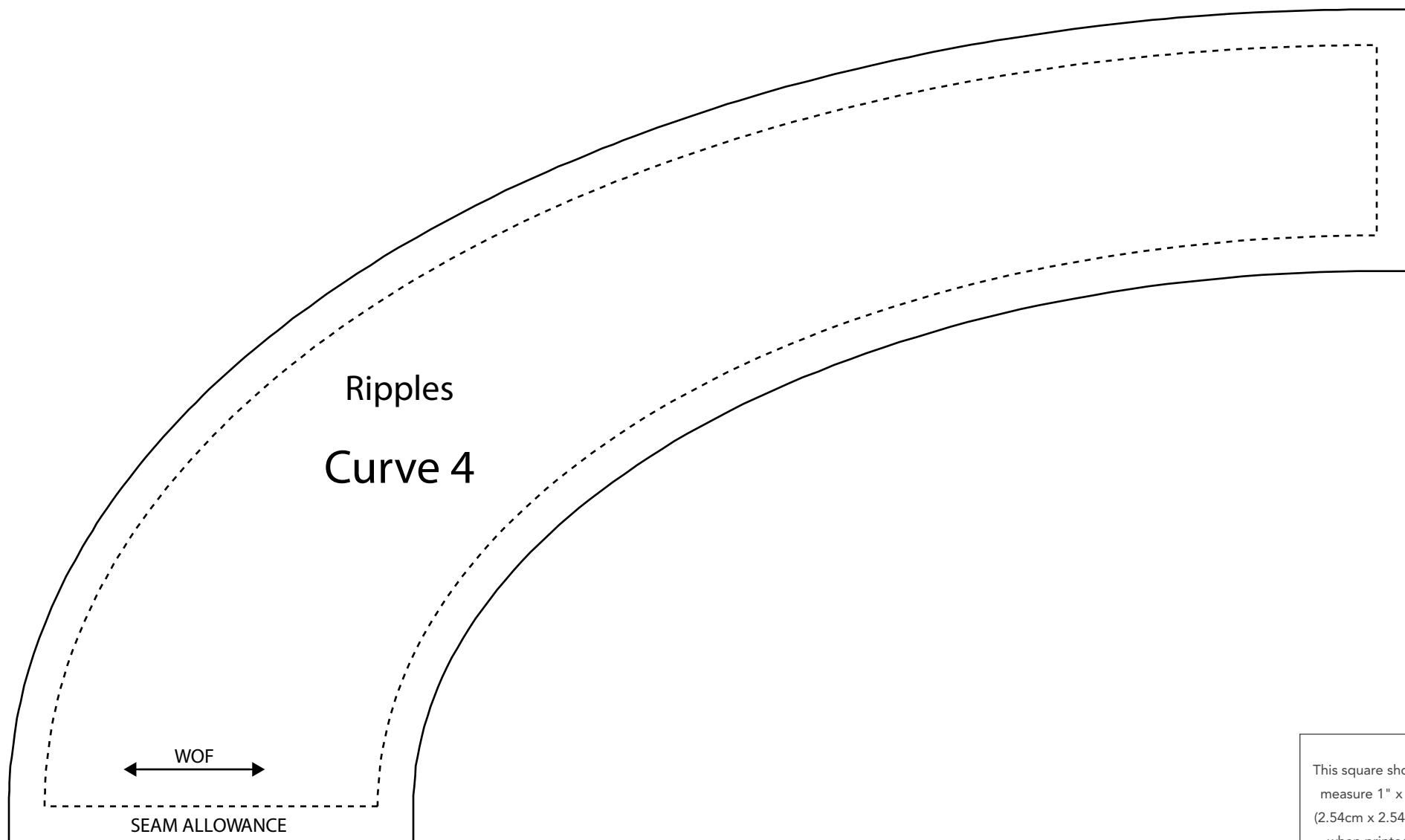
Quilt Layout





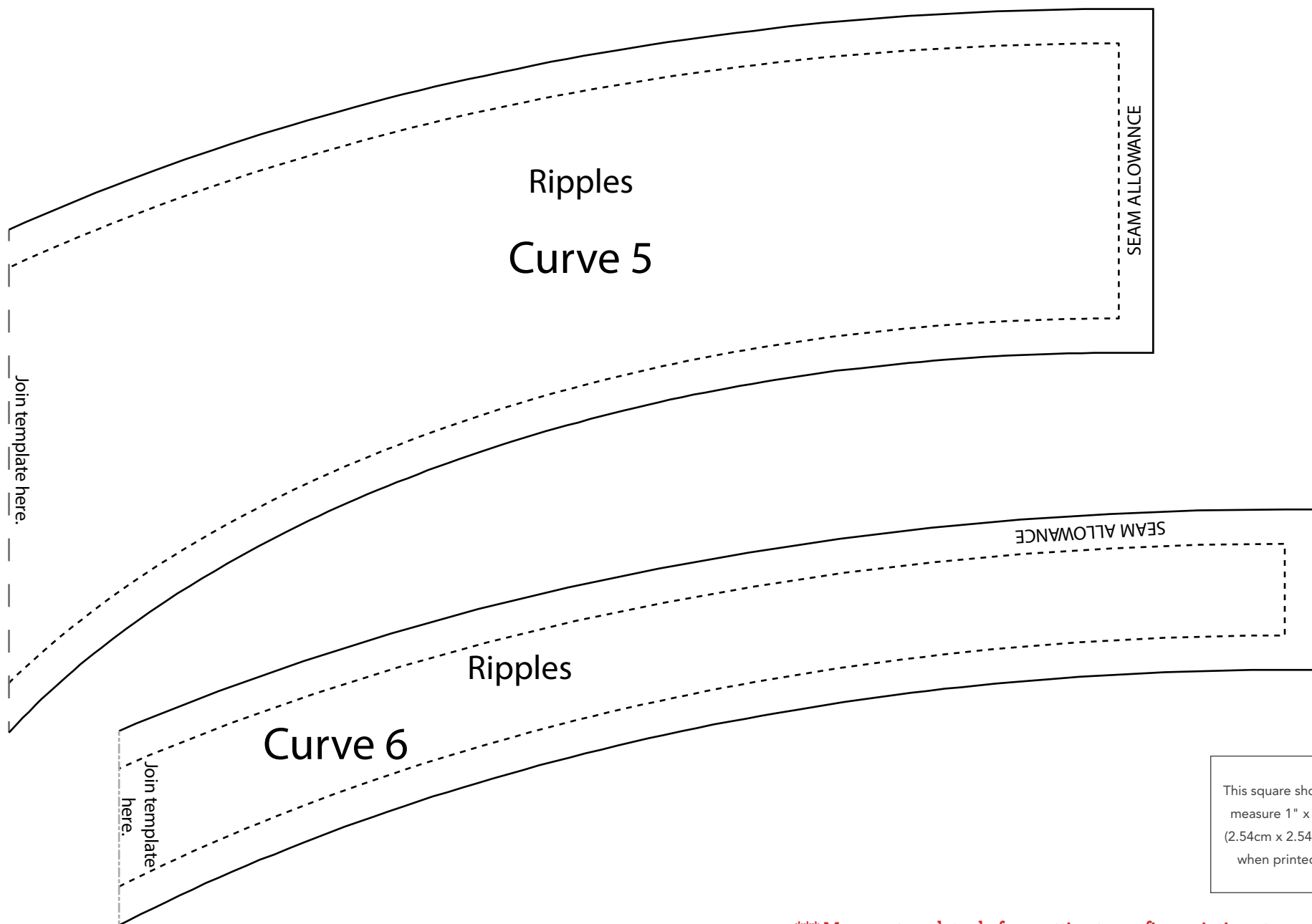
This square should
measure 1" x 1"
(2.54cm x 2.54cm)
when printed.

*** Measure templates before cutting to confirm printing at 100%***

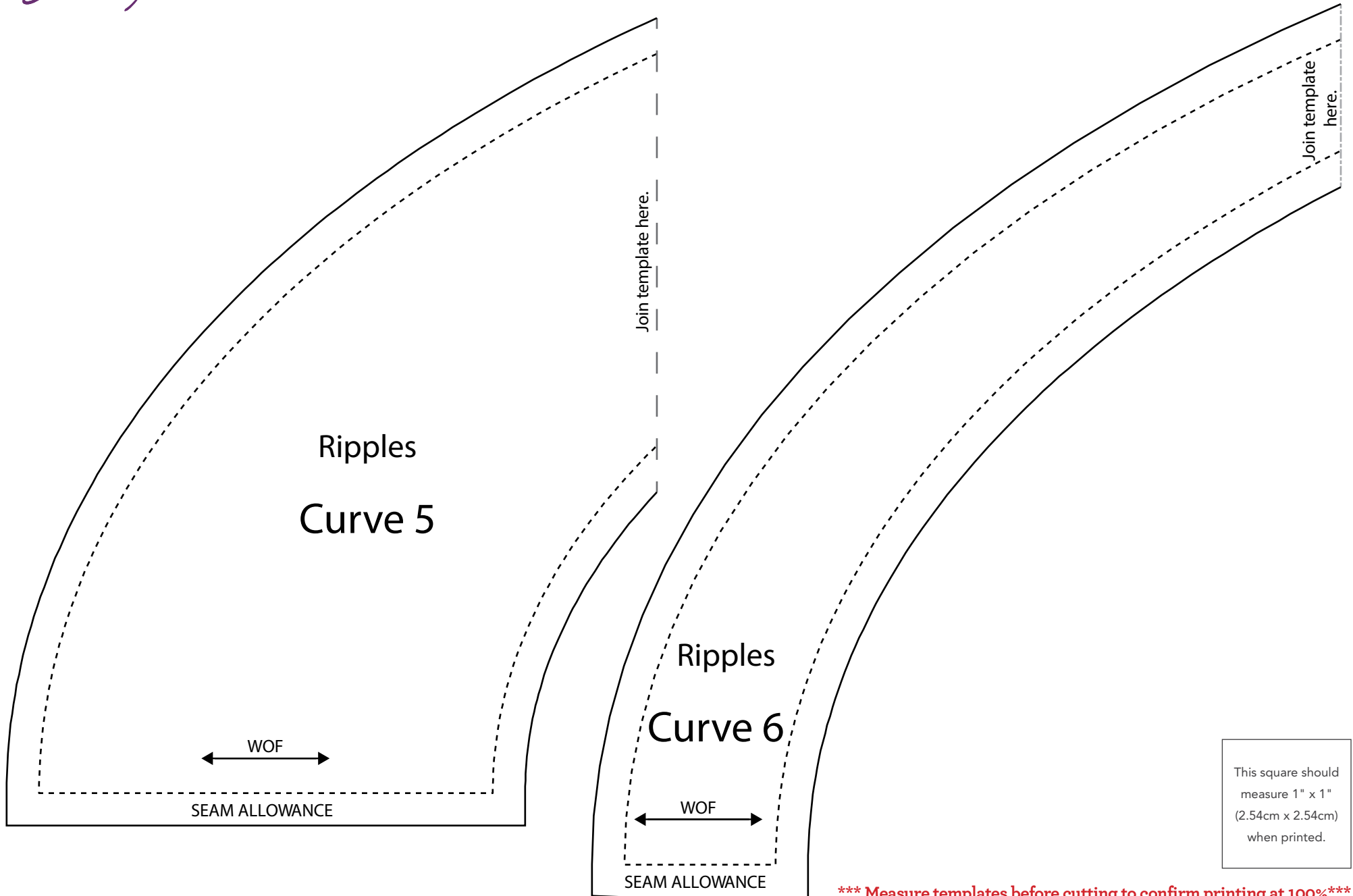


This square should
measure 1" x 1"
(2.54cm x 2.54cm)
when printed.

***** Measure templates before cutting to confirm printing at 100%*****



*** Measure templates before cutting to confirm printing at 100%***



This square should
measure 1" x 1"
(2.54cm x 2.54cm)
when printed.

***** Measure templates before cutting to confirm printing at 100%*****

