



# Cozy Gathering Quilt

Featuring Caspian by Sanderson

Collection:	Caspian by Sanderson
Technique:	Pieced
Skill Level:	Intermediate
Finished Size:	Finished Size of Project: Approximately 77 <sup>3</sup> / <sub>4</sub> " x 77 <sup>3</sup> / <sub>4</sub> " (1.97m x 1.97m)
	Finished Block Size: 22" x 22" (55.88cm x 55.88cm)

All possible care has been taken to ensure the accuracy of this pattern. We are not responsible for printing errors or the manner in which individual work varies. Please read the instructions carefully before starting this project. If kitting, it is recommended a sample is made to confirm accuracy.

**Project designed by Carl Hentsch of 3 Dog Design Company**

Re-colored by FreeSpirit Fabrics

## Fabric Requirements

DESIGN	COLOR	Item I.D.	YARDAGE
(A) Pamir	Forest	PWSA086.FOREST	1½ yards (1.37m)
(B) Newnham	Terracotta	PWSA085.TERRACOTTA	1 yard (.91m)
(C) Flower Power	Mellow	PWSK032.MELLOW	1⅞ yards (1.71m)
(D) Pamir Garden	Stone	PWSA087.STONE	1 yard (.91m)
(E) SM Madurai	Gold	PWSA084.GOLD	¾ yard (68.58cm)
(F) Tonal Cantaloupe	Teal	PWSA081.TEAL	¾ yard (68.58cm)
(G) Zellige	Green	PWSA088.GREEN*	¾ yard (68.58cm)
(H) Zellige	Green	PWSA088.GREEN	½ yard (45.72cm)
(I) Cantaloupe	Forest	PWSA082.FOREST	1½ yards (1.37m)
(J) Anaar	Berry	PWSA080.BERRY	1 yard (.91m)

\*binding listed separately -

(Increase Fabric G to 1 yard if you prefer to make continuous binding from a square.)

## Backing (Purchased Separately)

44" (1.12m)

Cantaloupe Forest PWSA082.FOREST 5 yards (4.57m)

## Additional Requirements

- Thread in colors to match
- 86" x 86" (2.18m x 2.18m) quilt batting
- Basic sewing supplies



(A)



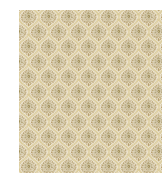
(B)



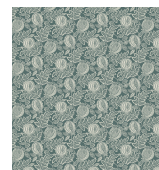
(C)



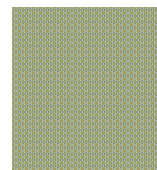
(D)



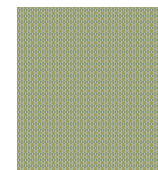
(E)



(F)



(G)



(H)



(I)



(J)



Backing  
44"  
(1.12m)



## Cutting

**Fabrics A and I**, cut from EACH:

- (2) 22½" x WOF strips. Sub-cut
- (16) 3¼" x 22½" strips for the pieced sashing.

**Fabric B**, cut:

- (9) 3¼" x WOF strips. Sub-cut
- (40) 3¼" x 6" rectangles
- (40) 3¼" x 3¼" squares

**Fabric C**, cut:

- (6) 6" x WOF strips. Set aside 2 for strip sets.
- Sub-cut the following from the remaining strips:
  - (40) 3¼" x 6" rectangles.
- (8) 3¼" x WOF strips. Set aside 4 strips for strip sets.
- Sub-cut the following from the remaining strips:
  - (40) 3¼" x 3¼" squares.

**Fabric D**, cut:

- (6) 4⅞" x WOF strips. Sub-cut
- (4) 4⅞" x 16½" rectangles
- (4) 4⅞" x 16" rectangles
- (4) 4⅞" x 12½" rectangles

**Fabrics E and F**, cut from EACH:

- (1) 4" x WOF strip. Sub-cut
- (2) 4" x 4" squares.
- Cut each square in half twice on the diagonal for a total of 8 Piece 1 triangles.
- (6) 3¼" x WOF strips. Set aside 5 strips for making strip sets.
- From the remaining strip, sub-cut
- (4) 3¼" x 3¼" squares for the pieced sashing triangles.

**Fabric G**, cut:

Enough 2½" wide bias strips to make 330" (9.17m) of bias binding

**Fabric H**, cut:

- (1) 12" x WOF strip. Sub-cut
- (1) 12" x 12" square. Cut in half twice on the diagonal for 4 Piece 2 QSTs (quarter-square triangles).
- (2) 6¼" x 6¼" squares. Cut each square in half on the diagonal for 4 Piece 3 HSTs (half-square triangles).

**Fabric J**, cut:

- (1) 23½" x WOF strip. Sub-cut the following strips so the length runs parallel to the selvages:
  - (8) 4⅞" x 23½" strips for the Side and Corner Setting Triangles.
- (2) 4⅞" x WOF strips. Sub-cut
- (4) 4⅞" x 20" strips for the Side Setting Triangles.

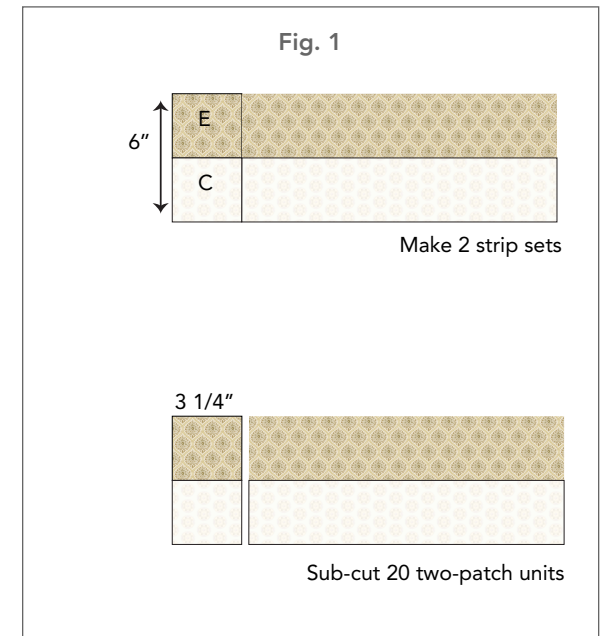
## Sewing Instructions

**Note:** Use a ¼" seam allowance throughout. Sew all pieces with right sides together and raw edges even. Use thread that matches or blends with the fabric colors.

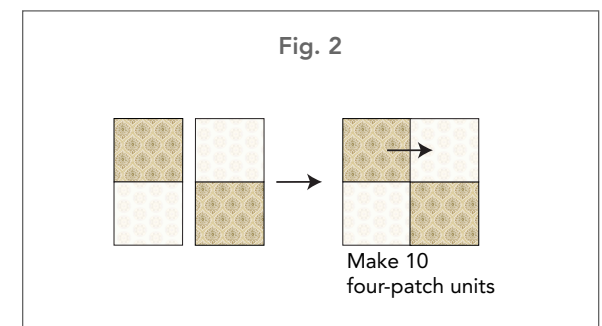
### Block Assembly

1. Sew a **Fabric E** 3¼" x WOF strip to a **Fabric C** 3¼" x WOF strip and press the seam allowances toward **Fabric E**. Make 2 strip sets.

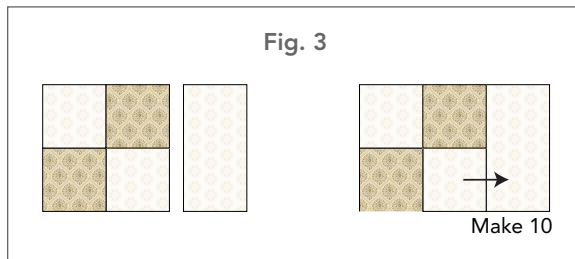
2. From the strip sets, cut a total of (20) 3¼" x 6" two-patch units (Fig. 1).



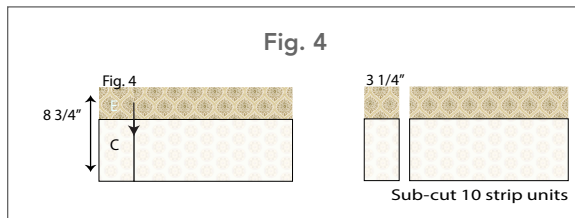
3. Arrange the two-patch units in pairs to make (10) 6"x 6" four-patch units. Press the seam allowances in one direction (Fig. 2).



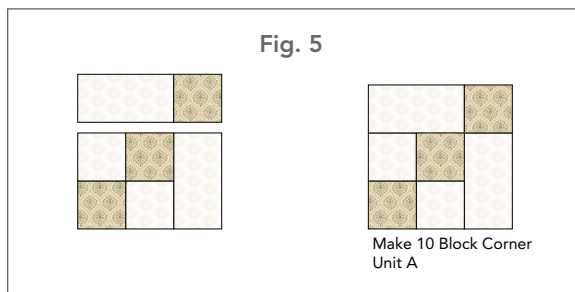
4. Sew a **Fabric C**  $3\frac{1}{4}" \times 6"$  rectangle to one side of each four-patch unit from step 3 and press the seam allowances toward **Fabric C**. Make 10 (Fig. 3).



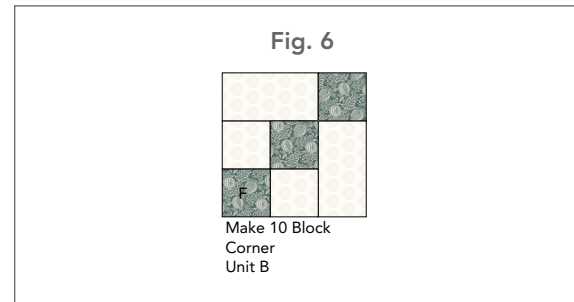
5. Sew a **Fabric E**  $3\frac{1}{4}" \times \text{WOF}$  strip to a **Fabric C**  $6" \times \text{WOF}$  strip. From the strip set, sub-cut (10)  $3\frac{1}{4}" \times 8\frac{3}{4}"$  rectangles (Fig. 4).



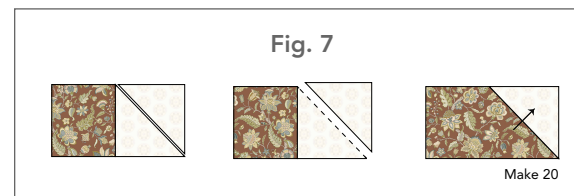
6. Sew one of the step 5 units to a four-patch unit from step 4 to make a unit that measures  $8\frac{3}{4}"$  square. Repeat with the remaining four-patch units to make a total of 10 Block Corner Unit A (Fig. 5).



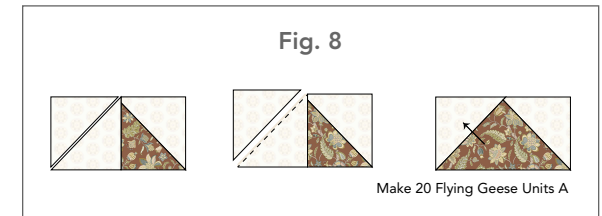
7. Repeat steps 1-5 using a **Fabric F** strip in place of **Fabric E**. Make a total of 10 Block Corner Unit B (Fig. 6).



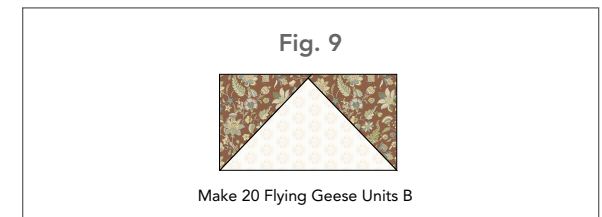
8. Draw a diagonal line on the wrong side of each **Fabric C**  $3\frac{1}{4}" \times 3\frac{1}{4}"$  square. Place a marked **Fabric C** square right sides together at one end of a **Fabric B**  $3\frac{1}{4}" \times 6"$  rectangle and sew on the drawn line. Trim away the corner  $\frac{1}{4}"$  from the stitching. Press the small triangle toward the seam allowances. Repeat to make a total of 20 units (Fig. 7).



9. Repeat step 8 at the opposite end of each unit to complete a total of 20 Flying Geese Unit A (Fig. 8).

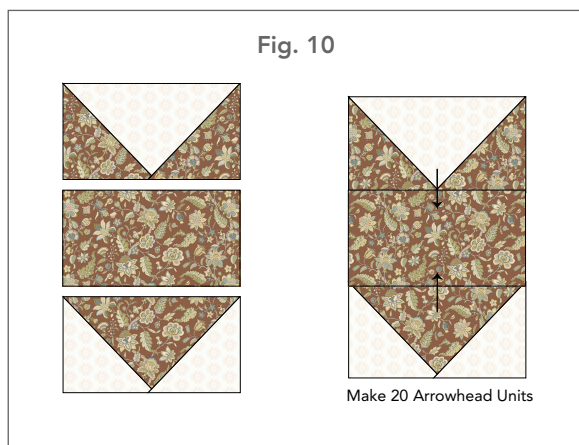


10. Repeat Steps 8-9 with the **Fabric B**  $3\frac{1}{4}" \times 3\frac{1}{4}"$  squares and the **Fabric C**  $3\frac{1}{4}" \times 6"$  rectangles to make a total of 20 Flying Geese Unit B (Fig. 9).

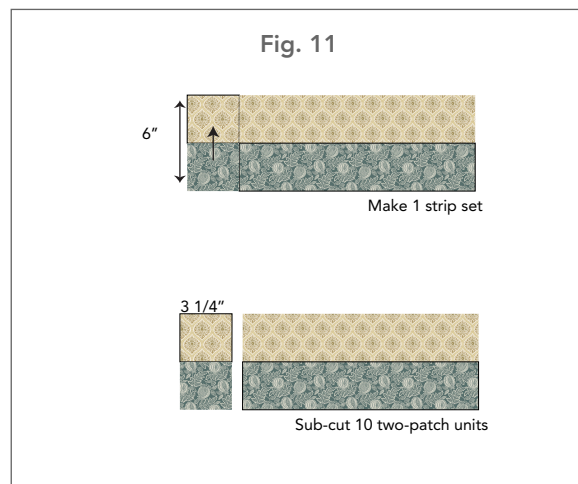




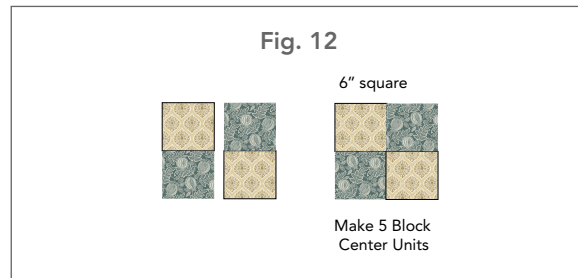
11. Arrange the Flying Geese Units A and B from steps 8-10 with **Fabric B**  $3\frac{1}{4}" \times 6"$  rectangles as shown. Sew together and press the seam allowances toward the center rectangle (**Fig. 10**). Repeat to make 20 Arrowhead Units, 4 for each block.



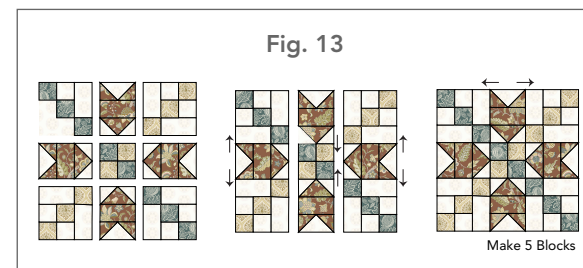
12. Sew a **Fabric E**  $3\frac{1}{4}" \times \text{WOF}$  strip to a **Fabric F**  $3\frac{1}{4}" \times \text{WOF}$  strip. Press the seam allowances toward **Fabric E**. Sub-cut (10)  $3\frac{1}{4}" \times 6"$  two-patch units (**Fig. 11**).



13. Arrange the units in pairs and sew together to make (5)  $6" \times 6"$  Block Center Units (**Fig. 12**).

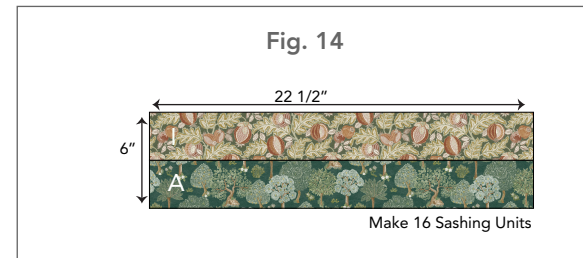


14. Arrange a Block Center Units with (2) each Block Corner A and B Units and (4) Arrowhead Units as shown. Sew the units together in columns and press the seam allowances away from the Arrowhead Units. Sew the columns together to complete each block and press the seam allowances away from the center row, toward the block corners. Make 5 blocks total (**Fig. 13**).

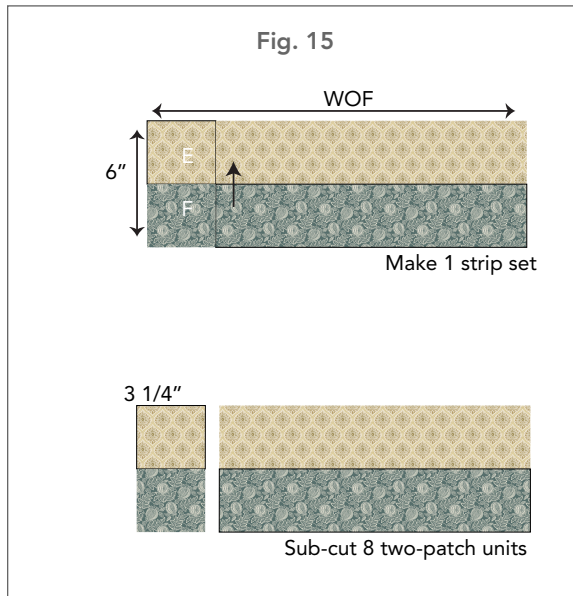


## Pieced Sashing, Cornerstone, and Sashing Triangle Units

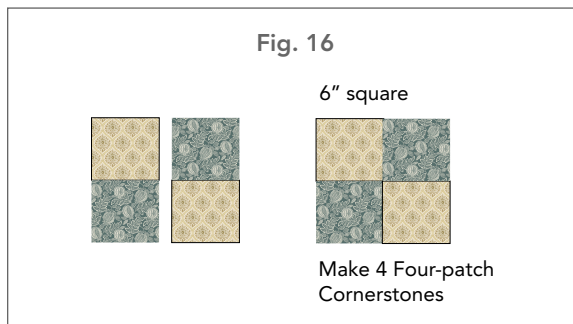
15. Sew the **Fabric A** and **Fabric I**  $3\frac{1}{4}" \times 22\frac{1}{2}"$  strips together to make (16)  $6" \times 22\frac{1}{2}"$  Sashing Units. Press the seam allowances toward **Fabric I** (**Fig. 14**).



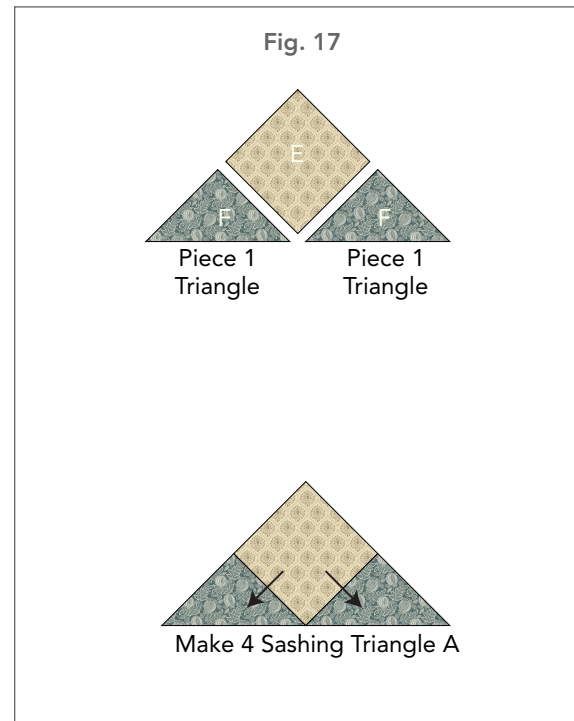
16. Sew a **Fabric E**  $3\frac{1}{4}$ " x WOF strip to a **Fabric F**  $3\frac{1}{4}$ " x WOF strip. Press the seam allowances toward **Fabric E**. From the strip set, sub-cut a total of (8)  $3\frac{1}{4}$ " x 6" Two-patch units (Fig. 15).



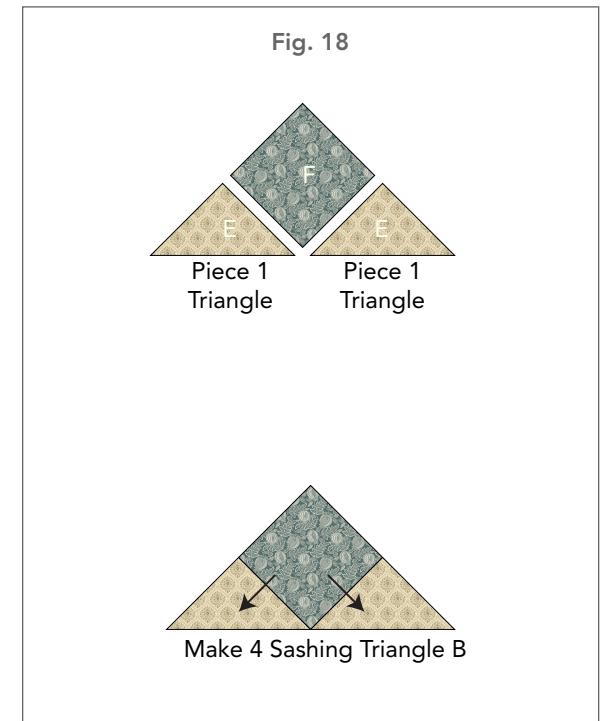
17. Arrange and sew the two-patch units together in pairs to make (4) 6" x 6" Four-patch Cornerstones. Press the seam allowances in one direction (Fig. 16).



18. Sew a **Fabric F** Piece 1 Triangle to (2) adjacent sides of a **Fabric E**  $3\frac{1}{4}$ " x  $3\frac{1}{4}$ " square. Press the seam allowances toward the triangles. Make 4 Sashing Triangle A (Fig. 17).



19. Sew a **Fabric E** Piece 1 Triangle to (2) adjacent sides of a **Fabric F**  $3\frac{1}{4}$ " x  $3\frac{1}{4}$ " square. Press the seam allowances toward the triangles. Make 4 Sashing Triangle B (Fig. 18).

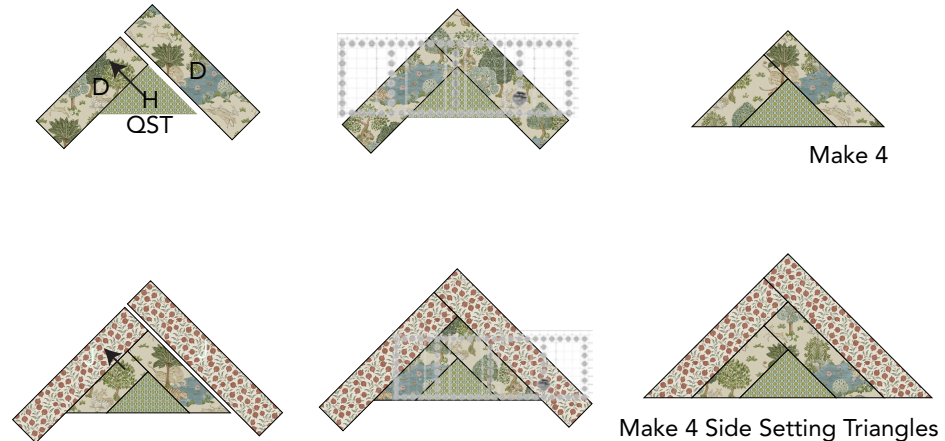


## Pieced Side Setting Triangles

Refer to **Figure 19** for steps 20-22.

20. Sew a  $4\frac{1}{8}$ " x  $12\frac{1}{2}$ " **Fabric D** strip to the left edge of a **Fabric H** Piece 2 QST as shown.  
Line up the edge of the strip with the square corner of the triangle, with a small amount of the strip extending past the bottom edge of the triangle as shown. Press the seam allowances toward the strip.
21. Sew a  $4\frac{1}{8}$ " x 16" **Fabric D** strip to the opposite edge of the triangle and press the seam allowances toward the strip. Align a long ruler along the bottom of the triangle and trim the excess from the **Fabric D** strips. Repeat to make 4 identical units.
22. In the same manner, add the **Fabric J**  $4\frac{1}{8}$ " x 20" and the  $4\frac{1}{8}$ " x  $23\frac{1}{2}$ " strips to the unit from step 21 and press the seam allowances toward the **Fabric J** strip. Trim the excess. Repeat to make 4 Side Setting Triangles (**Fig.19**).

Fig. 19

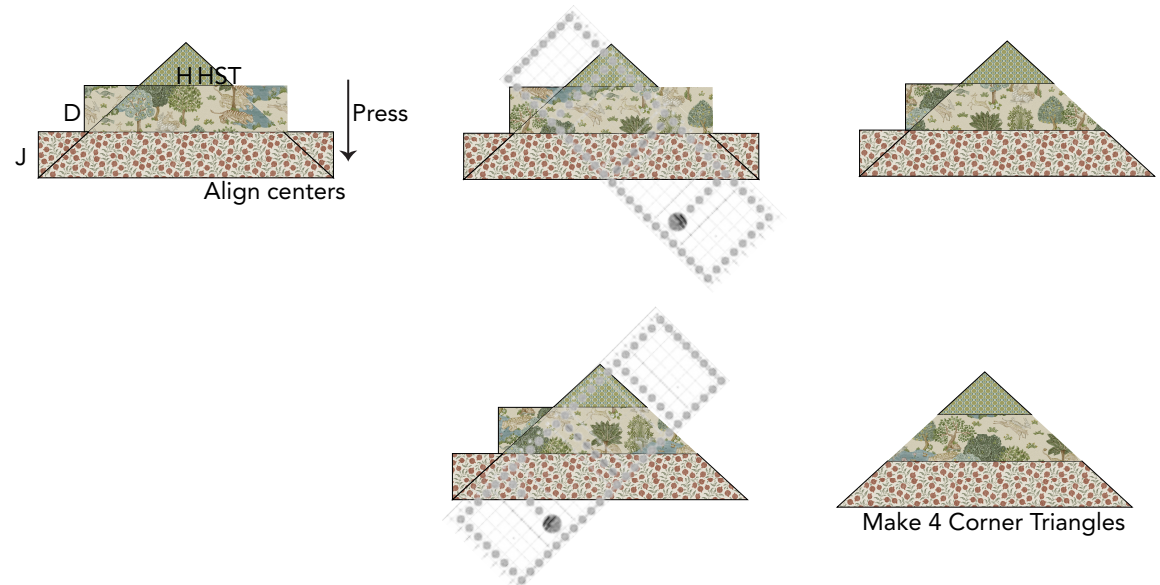


## Pieced Corner Triangles

Refer to **Figure 20** for steps 23-24.

23. Matching the centers, sew a **Fabric D**  $4\frac{1}{8}$ " x  $16\frac{1}{2}$ " strip, **Fabric J**  $4\frac{1}{8}$ " x  $23\frac{1}{2}$ " strip, and the **Fabric H** Piece 3 HST together.  
Press the seam allowances toward the **Fabric J** strip.
24. Align a long ruler with one side of the triangle and trim away the excess **Fabric D** and **Fabric J** strips. Repeat on the opposite side to make 1 Corner Triangle. Repeat to make a total of 4 Corner Triangles (**Fig. 20**).

Fig. 20





## Quilt Top Assembly

Refer to the **Quilt Layout** diagram for steps 25-27.

25. Arrange the blocks with the Sashing Units, Four-patch Cornerstones, Sashing Triangles A and B, and the Side Setting and Corner Triangles in the diagonal setting shown.
26. Sew the pieces together in the diagonal rows and press all seam allowances toward the sashing.
27. Sew the rows together to complete the quilt top and press all seam allowances toward the sashing. If needed, trim to square up 1/4" from the points of the Sashing Triangles A and B. The quilt top should measure approximately 78 1/4" x 78 1/4" (1.99m x 1.99m).

## Finishing

28. Press the backing and quilt top and trim any stray threads.
29. Layer the batting and backing with the quilt top and baste together using your favorite method. Quilt as desired. Trim the excess batting and backing even with the quilt top.
30. Sew the **Fabric G** 2 1/2" bias strips together to make one long strip. Press the seams open. Fold the strip in half lengthwise with wrong sides together and press. Sew the binding to the top of quilt with raw edges even, mitering the corners as you reach them.
31. Turn the binding to the back of quilt and hand-stitch in place.

Quilt Layout

