

Silk Shawls Quilt

Featuring Joyful by Sarah Campbell

Technique: Pieced

Skill Level: Advanced Beginner

Finished Size:

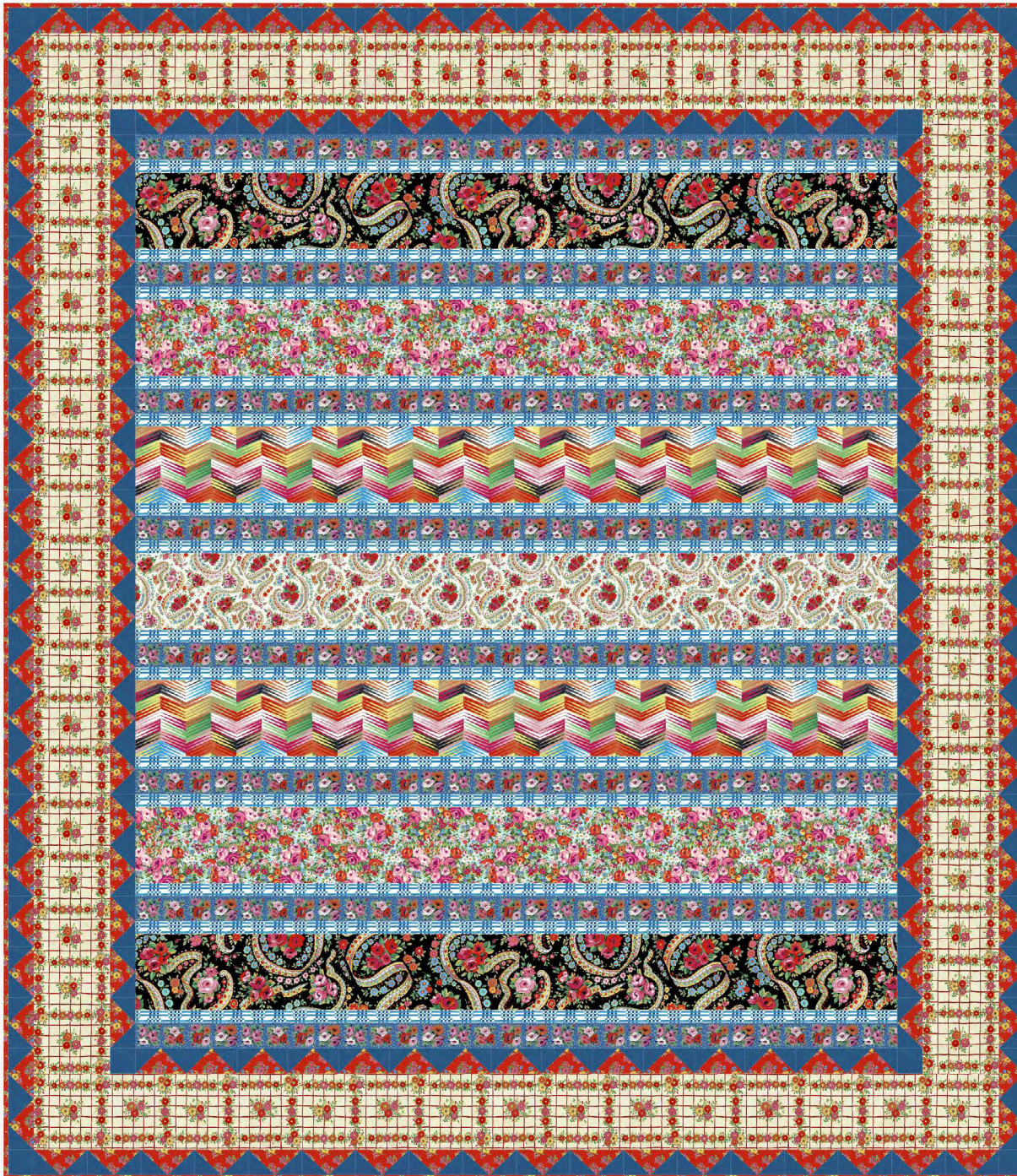
80" x 92" (2.03m x 2.33m)

Finished Flying Geese Size:

2" x 4" (5.08cm x 10.16cm)

Project designed by: Stacey Day

All possible care has been taken to ensure the accuracy of this pattern. We are not responsible for printing errors or the manner in which individual work varies. Please read the instructions carefully before starting this project. If kitting, it is recommended a sample is made to confirm accuracy.



FABRIC REQUIREMENTS (Tech edited by: Alison M. Schmidt)

	Design	Color	Item ID	Yardage
A	Alfredo	Blue	PWSH039.BLUE	1⅛ yards (1.03m)
B	Field Day	Blue	PWSH040.BLUE	1¼ yards (1.14m)
C	Picnic	Cream	PWSH042.CREAM	2¼ yards (2.06m)
D	Gala	Black	PWSH044.BLACK	¾ yard (0.69m)
E	Breeze	Multi	PWSH045.MULTI	½ yard (0.46m)
F	Zest	Multi	PWSH047.MULTI	¾ yard (0.69m)
G	Felicity	Yellow	PWSH048.RED*	1⅝ yards (1.49m)
H	Posy	Multi	PWSH049.MULTI	¾ yard (0.69m)
I	Shot Cotton	Teal	SCGP105.TEAL	1¼ yards (1.14m)

* includes binding

Backing (Purchased Separately)

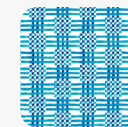
44" (1.12m) wide

Zest Multi PWSH047.MULTI 7 yards (6.40m)

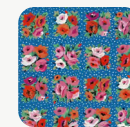
ADDITIONAL REQUIREMENTS

- 100% cotton thread
- 88" x 100" (2.24m x 2.54m) batting

Swatches



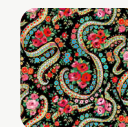
A



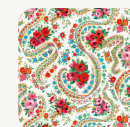
B



C



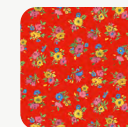
D



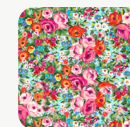
E



F



G



H



I



44"

CUTTING

WOF = Width of Fabric

LOF = Length of Fabric

Note: The WOF strips will be sewn end to end and subcut into their needed lengths for the quilt center. If desired, try to cut the 6½" x WOF strips from a similar place in the pattern repeat so they are easy to piece for a seamless look. The narrow **Fabric A** strips need minimal fussy cutting due to the small repeat. The binding does not require any fussy cutting.

From Fabric A, cut:

(22) 1½" x WOF

From Fabric B, fussy cut:

(13) 2½" x WOF, centered on floral squares

From Fabric C, fussy cut:

(4) 6½" x LOF, centered on the groups of 3 flowers

From Fabric D, F, and H, cut from each:

(3) 6½" x WOF

From Fabric E, cut:

(2) 6½" x WOF

From Fabric I, cut:

(11) 2⅞" x WOF; cut (148) 2⅞" x 2⅞"

(1) 2½" x WOF; cut (8) 2½" x 2½"

From Fabric G:

(5) 5¼" x WOF; cut (37) 5¼" x 5¼"

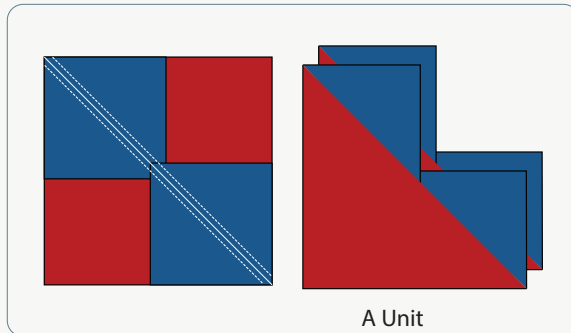
(10) 2½" x WOF for binding

INSTRUCTIONS

All seam allowances are $\frac{1}{4}$ ". Press as directed.

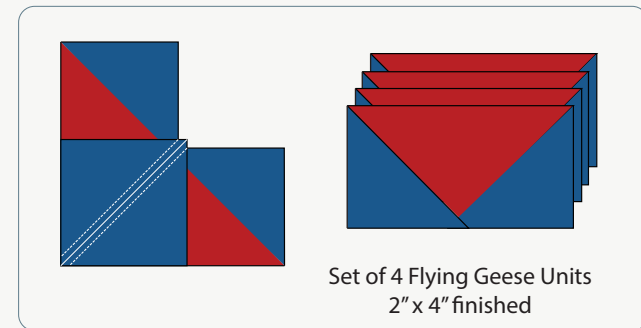
- 1 Draw a diagonal line on the wrong side of each **Fabric I** $2\frac{7}{8}$ " x $2\frac{7}{8}$ " square.
- 2 Pin (2) marked **Fabric I** squares right sides together to a **Fabric G** $5\frac{1}{4}$ " x $5\frac{1}{4}$ " square as shown. The corners of the **Fabric I** squares will overlap in the center. Stitch $\frac{1}{4}$ " from each side of the drawn line. Cut apart on the drawn line. Press towards **Fabric I** to make (2) A Units.

Fig. 1



- 3 Pin a marked **Fabric I** square to the corner of each A Unit as shown, right sides together. Stitch $\frac{1}{4}$ " on each side of the drawn line. Cut apart on the line and press towards **Fabric I**, to make (4) Flying Geese Units. If needed, trim and square to $2\frac{1}{2}$ " x $4\frac{1}{2}$ ", keeping the diagonal seam centered in the corners. Repeat to make a total of (148) Flying Geese Units.

Fig. 2



4 Sew the **Fabric A** strips together end to end, matching up the patterns as much as possible. From this length, cut (14) strips 60½" long. Repeat with **Fabrics B, D, E, F,** and **H** and cut the following:

- **Fabric B** - (8) 2½" x 60½"
- **Fabric D, F,** and **H** - (2) 6½" x 60½" each
- **Fabric E** - (1) 6½" x 60½"

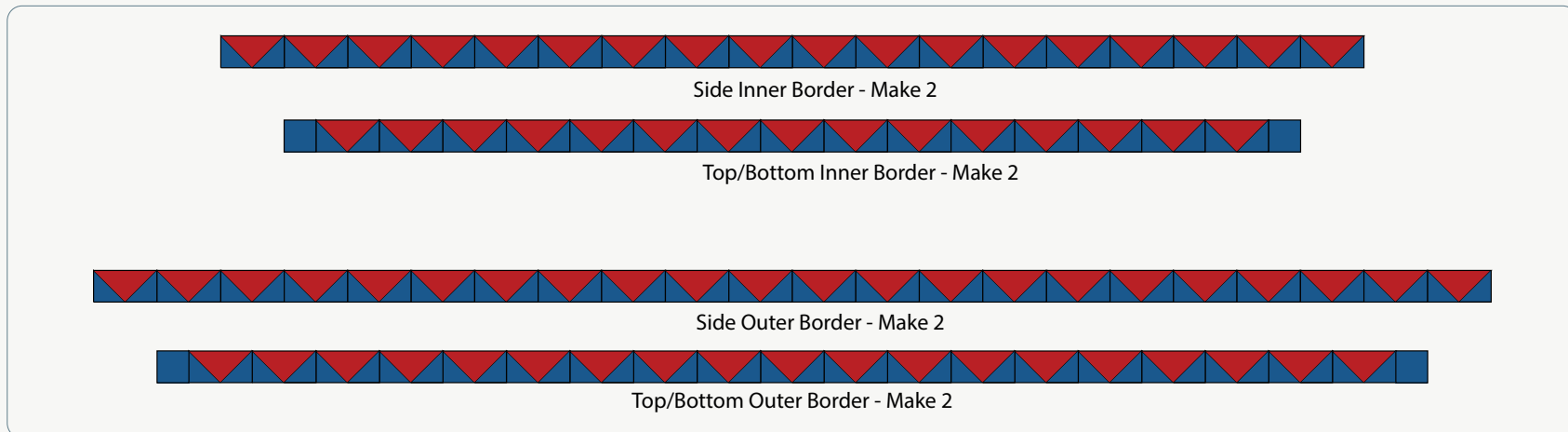
5 Sew (18) Flying Geese Units together to make a Side Inner Border. Make (2). Press seams open.

6 Sew (15) Flying Geese Units and (2) **Fabric I** 2½" x 2½" squares together to make a Top/Bottom Inner Border. Make (2). Press seams open.

7 Sew (22) Flying Geese Units together to make a Side Outer Border. Make (2). Press seams open.

8 Sew (19) Flying Geese Units and (2) **Fabric I** 2½" x 2½" squares together to make a Top/Bottom Outer Border. Make (2). Press seams open.

Fig. 3



- 9 Sew the **Fabric A, B, D,** and **E** strips together in the order shown in the **Quilt Layout** diagram (page 7). **Tip:** You may find it easier to first sew together all the **A** and **B** strips, then join those sections to the wider strips. Press all seams towards **Fabric A**. The finished quilt center should measure 60½" x 72½".
- 10 Sew the Side Inner Borders to the sides of the quilt center, placing the **Fabric I** side of the Flying Geese towards the quilt center. Press towards the quilt center. Then sew the Top/Bottom Inner Borders to the top and bottom, with the same orientation. Press towards the quilt center.
- 11 Trim the fussy-cut **Fabric C** strips down to to 76½" long, so that a line of flowers will be just inside the seam allowance at each short end of the trimmed strips.
- 12 Sew the trimmed **Fabric C** borders to all four sides of the quilt top, starting with the sides, then the top and bottom. Press towards **Fabric C**.
- 13 Sew the Side Outer Borders to the sides, this time making sure the **Fabric G** sides are towards the **Fabric C** border. Press towards **Fabric C**, then sew the Top/Bottom Outer Borders, with the same orientation, to the top and bottom to complete the quilt top. Press towards **Fabric C**.

FINISHING

- 14 Sew together the 2½" **Fabric G** binding strips end-to-end with diagonal seams. Press seams open. Press the binding strip in half wrong sides together.
- 15 Layer backing (wrong side up), batting, and quilt top (right side up). Baste the layers together and quilt as desired. Trim excess batting and backing even with the top after quilting is completed.
- 16 Leaving an 8" tail of binding, sew the binding to the top of the quilt through all layers matching all raw edges. Miter corners. Stop approximately 12" from where you started. Lay both loose ends of binding flat along quilt edge. Where the loose ends meet, fold them back on themselves and press to form a crease. Using this crease as your stitching line, sew the two open ends of the binding right sides together. Trim seam to ¼" and press open. Finish sewing binding to quilt.
- 17 Turn the binding to the back of quilt and hand-stitch in place.

Quilt Layout Diagram

