

Featuring Eclipse by Sarah Szczepanski

Eclipse Sky Quilt

Finished Size: 51" x 71" (1.29m x 1.80m)

Project designed by Joanne Kerton - Canuck Quilter Designs

Purchase pattern at canuckquilterdesigns.com

Technique: Pieced & Raw Edge Applique | Skill Level: Advanced Beginner



Eclipse Sky Quilt

Fabric Requirements

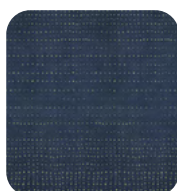
DESIGN	COLOR	ITEM ID	YARDAGE
(A) Constellation	Shadow	PWSS048.SHADOW*	1½ yard (1.37m)
(B) Stellar	Umbra	PWSS049.UMBRA	1¾ yard (1.26m)
(C) Artemis	Solar	PWSS053.SOLAR	1⅞ yard (1.71m)
(D) Designer Essentials Solids	Stormy	CSFSESS.STORMY	1⅞ yard (1.03m)
(E) Threads	Mellow	PWSK037.MELLOW	1 yard (0.91m)

* includes binding

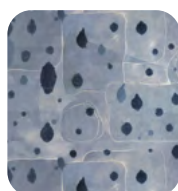
Backing (Purchased Separately)

44" (1.12m) wide

Wavelengths	Solar	PWSS043.SOLAR	4⅝ yards (4.23m)
-------------	-------	---------------	------------------



(A)



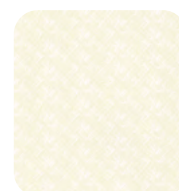
(B)



(C)



(D)



(E)



**Backing
44"**

If kitting, refer to the final pattern for yardage amounts, it is recommended that a sample is made to confirm accuracy.