



Featuring Eclipse by Sarah Szczepanski

# Leading Edge Quilt

Finished Size: 60" x 72" (1.52m x 1.82m)

Project designed by Joanne Kerton - Canuck Quilter Designs

Purchase pattern at [canuckquilterdesigns.com](http://canuckquilterdesigns.com)

Technique: Pieced | Skill Level: Advanced Beginner



# Leading Edge Quilt

## Fabric Requirements

DESIGN	COLOR	ITEM ID	YARDAGE
(A) Celestial	Umbra	PWSS044.UMBRA	1¼ yard (1.14m)
(B) Orbit	Shadow	PWSS046.SHADOW*	1¼ yard (1.14m)
(C) Constellation	Shadow	PWSS048.SHADOW	5⁄8 yards (0.57m)
(D) Stellar	Umbra	PWSS049.UMBRA	7⁄8 yards (0.80m)
(E) Moon Phase	Umbra	PWSS052.UMBRA	1½ yard (1.49m)
(F) Jupiter	Solar	PWSS054.SOLAR	7⁄8 yards (0.80m)

\* includes binding

## Backing (Purchased Separately)

44" (1.12m) wide

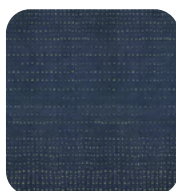
Twilight	Shadow	PWSS047.SHADOW	4½ yards (4.23m)
----------	--------	----------------	------------------



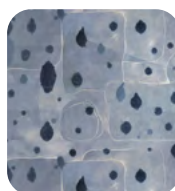
(A)



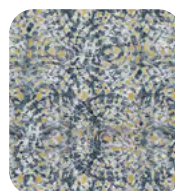
(B)



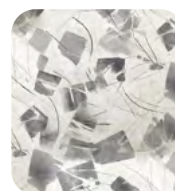
(C)



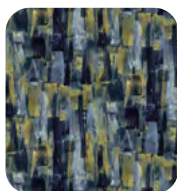
(D)



(E)



(F)



Backing  
44"

*If kitting, refer to the final pattern for yardage amounts, it is recommended that a sample is made to confirm accuracy.*