

Featuring Stamped by Seth Apter

Cabin Fever Quilt

Finished Size: 80" x 80" (2.03m x 2.03m)

Project designed by Kustom Kwilts

Purchase pattern at kustomkwilter.com

Technique: Pieced | Skill Level: Advanced Beginner



Cabin Fever Quilt

Fabric Requirements

DESIGN	COLOR	ITEM ID	YARDAGE
(A) Wordster	Paper	PWSE044.PAPER	1½ yard (1.22m)
(B) Dot Plot	Paper	PWSE045.PAPER	⅓ yards (0.30m)
(C) Spotted	Paper	PWSE046.PAPER	⅓ yards (0.30m)
(D) Orbit	Paper	PWSE047.PAPER	⅔ yards (0.61m)
(E) Sidelined	Paper	PWSE048.PAPER	½ yards (0.46m)
(F) Atomic	Paper	PWSE049.PAPER	½ yards (0.46m)
(G) Edit	Paper	PWSE050.PAPER	⅔ yards (0.61m)
(H) Monochrome	Paper	PWSE051.PAPER	⅔ yards (0.61m)
(I) Polychrome	Paper	PWSE052.PAPER	⅔ yards (0.61m)
(J) Alchemy	Intrigue	PWTH177.INTRIGUE	2½ yards (2.29m)
(K) Alchemy	Smolder	PWTH177.SMOLDER*	¾ yards (0.69m)

* includes binding

Backing (Purchased Separately)

44" (1.12m) wide

Orbit

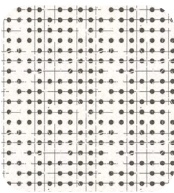
Paper

PWSE047.PAPER

5 yards (4.57m)



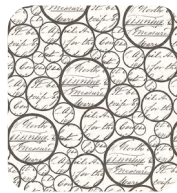
(A)



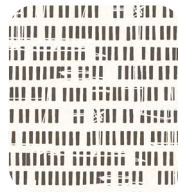
(B)



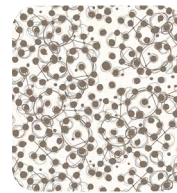
(C)



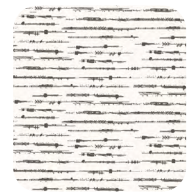
(D)



(E)



(F)



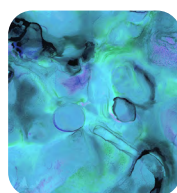
(G)



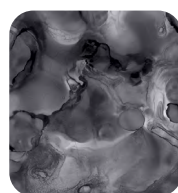
(H)



(I)



(J)



(K)



Backing
44"

If kitting, refer to the final pattern for yardage amounts, it is recommended that a sample is made to confirm accuracy.