

Featuring Sew Kind of Wonderful Primitive Cloth Collection

## Checkers & Chains Quilt

Finished Size: 74" x 74" (1.87m x 1.87m)

*Project designed by Sew Kind of Wonderful*

*Purchase pattern at [sewkindofwonderful.com](http://sewkindofwonderful.com)*

**Technique:** Curved Piecing and Piecing-Wonder Curve Ruler | **Skill Level:** Advanced Beginner



# Checkers & Chains Quilt

## Fabric Requirements

DESIGN	COLOR	ITEM ID	YARDAGE
(A) Banner	Blue	PWSK090.BLUE	⅓ yards (0.30m)
(B) Bright Stars	Blue	PWSK091.BLUE	⅓ yards (0.30m)
(C) Broad Stripes	Cream	PWSK092.CREAM	⅓ yards (0.30m)
(D) Hydrangea	Blue	PWSK093.BLUE	⅔ yards (0.61m)
(E) Wave	Blue	PWSK094.BLUE	⅓ yards (0.30m)
(F) Bursting	Navy	PWSK095.NAVY	¼ yards (0.23m)
(G) Celebrate	Blue	PWSK096.BLUE	¼ yards (0.23m)
(H) Glare	Red	PWSK097.RED*	1⅓ yard (1.22m)
(I) Tile Scape	Mint	PWSK098.MINT	⅓ yards (0.30m)
(J) Brave	Blue	PWSK099.BLUE	¼ yards (0.23m)
(K) Flower Power	White	PWSK032.MELLOW	3½ yards (3.20m)

\* includes binding

## Backing (Purchased Separately)

44" (1.12m) wide

Celebrate

Blue

PWSK096.BLUE

4½ yards (4.11m)



(A)



(B)



(C)



(D)



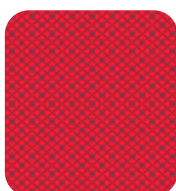
(E)



(F)



(G)



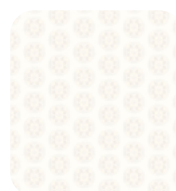
(H)



(I)



(J)



(K)



Backing  
44"

*If kitting, refer to the final pattern for yardage amounts, it is recommended that a sample is made to confirm accuracy.*