



Featuring Daybreak by Shell Rummel

Ingots Quilt

Finished Size: 54½" x 66" (1.37m x 1.67m)

Project designed by Kari Nichols-Quilting Renditions

Purchase pattern at quiltingrenditions.com

Technique: Pieced | **Skill Level:** Advanced Beginner

Fabric Requirements

DESIGN	COLOR	ITEM ID	YARDAGE
(A) Sunrise to Sunset	Firstlight	PWSR058.FIRSTLIGHT	5/8 yards (0.57m)
(B) Nature's Walk	Ink	PWSR096.INK	5/8 yards (0.57m)
(C) Unfolding	Bluehour	PWSR097.BLUEHOUR	1 yard (0.91m)
(D) Arise	Moonshadow	PWSR098.MOONSHADOW	1/4 yards (0.23m)
(E) Meditation	Sunsup	PWSR100.SUNSUP	1/4 yards (0.23m)
(F) SM Jetty	Lilac	PWSR101.LILAC	1/4 yards (0.23m)
(G) Designer Essential Solid	Black	CSFSESS.BLACK*	2 3/8 yards (2.17m)

* includes binding

Backing (Purchased Separately)

44" (1.12m) wide

Horizons

Dawn

PWSR093.DAWN

4 yards (3.66m)

OR

108" (2.74m) wide

LG Nature's Walk

Fog

QBSR004.FOG

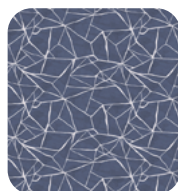
2 1/4 yards (2.06m)



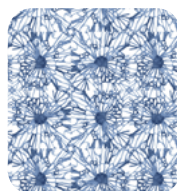
(A)



(B)



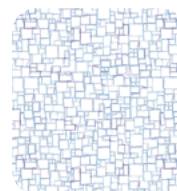
(C)



(D)



(E)



(F)



(G)



Backing
44"



Backing
108"

If kitting, refer to the final pattern for yardage amounts, it is recommended that a sample is made to confirm accuracy.