

Featuring Daybreak by Shell Rummel

Morning Frost Quilt

Finished Size: 60" x 72" (1.52m x 1.82m)

Project designed by Charisma Horton-Charismas Corner

Purchase pattern at charismascorner.com

Technique: Pieced | Skill Level: Advanced Beginner



Morning Frost Quilt

Fabric Requirements

DESIGN	COLOR	ITEM ID	YARDAGE
(A) Dream State	Aurora	PWSR094.AURORA*	2¾ yards (2.51m)
(B) Unfolding	Bluehour	PWSR097.BLUEHOUR	1½ yard (1.37m)
(C) Arise	Moonshadow	PWSR098.MOONSHADOW	¾ yards (0.69m)
(D) SM Jetty	Lilac	PWSR101.LILAC	2 yards (1.83m)

* includes binding

Backing (Purchased Separately)

44" (1.12m) wide

Sunrise to Sunset First Light PWSR058.FIRSTLIGHT 4 yards (3.66m)

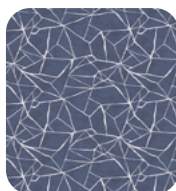
OR

108" (2.74m) wide

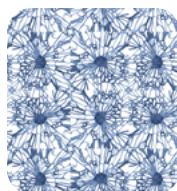
LG Nature's Walk FOG QBSR004.FOG 2 yards (1.83m)



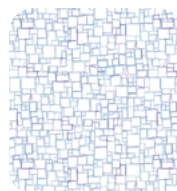
(A)



(B)



(C)



(D)



Backing
44"



Backing
108"

*If kitting, refer to the final pattern for yardage amounts,
it is recommended that a sample is made to confirm accuracy.*