



KAFFE  
FASSETT  
for

*Free Spirit*

# Shot Striped Frames Quilt

Featuring Shot Stripes by Kaffe Fassett

Celebrate Kaffe Fassett's vibrant shot cotton stripe fabrics by framing stripes with stripes and more stripes.

<b>Collection:</b>	Shot Stripes by Kaffe Fassett
<b>Technique:</b>	Piecing, Quilting
<b>Skill Level:</b>	Beginner
<b>Finished Size:</b>	78" x 84" (198.12cm x 213.36cm)

*All possible care has been taken to assure the accuracy of this pattern. We are not responsible for printing errors or the manner in which individual work varies. Please read the instructions carefully before starting this project. If kitting it is recommended a sample is made to confirm accuracy.*





# Shot Striped Frames Quilt

Project designed by Kaffe Fassett

Tech edited by Linda Turner Griepentrog

## Fabric Requirements

DESIGN	COLOR	ARTICLE CODE	YARDAGE
(A) Wide Stripe	Chestnut	SSGP001.CHESTNUT*	$\frac{3}{4}$ yard (0.69m)
(B) Wide Stripe	Kiwi	SSGP001.KIWI	$\frac{1}{3}$ yard (0.30m)
(C) Wide Stripe	Embers	SSGP001.EMBERS	$\frac{1}{2}$ yard (0.46m)
(D) Wide Stripe	Peat	SSGP001.PEAT	$\frac{1}{2}$ yard (0.46m)
(E) Wide Stripe	Aloe	SSGP001.ALOE	$\frac{5}{8}$ yard (0.57m)
(F) Narrow Stripe	Seaweed	SSGP002.SEAWEED	$\frac{3}{4}$ yard (0.69m)
(G) Narrow Stripe	Mallard	SSGP002.MALLARD	$\frac{7}{8}$ yard (0.80m)
(H) Narrow Stripe	Cocoa	SSGP002.COCOA	1 yard (0.91m)
(I) Narrow Stripe	Plaster	SSGP002.PLASTER	1 yard (0.91m)
(J) Wide Stripe	Fjord	SSGP001.FJORD	$1\frac{1}{8}$ yards (1.03m)

\* includes binding

## Backing (Purchased Separately)

44" (111.76cm) wide

OR

108" (274.32cm) wide

Full Blown Red QBGP004.2REDX  $2\frac{5}{8}$  yards (2.40m)

## Additional Requirements

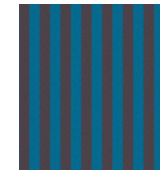
- 86" x 92" (218.44cm x 233.68cm) batting
- The Kaffe Collective Aurifil 100% cotton thread 50wt



(A)



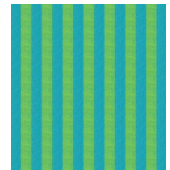
(B)



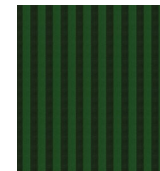
(C)



(D)



(E)



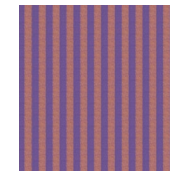
(F)



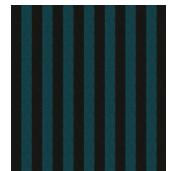
(G)



(H)



(I)



(J)



Backing  
108"  
(274.32cm)



# Shot Striped Frames Quilt

## Cutting

**WOF = Width of Fabric**

*Label pieces with the border numbers as they are cut.*

### Fabric A, cut:

- (1)  $6\frac{1}{2}$ " x WOF (16.51cm x WOF); sub-cut
  - (1)  $6\frac{1}{2}$ " x  $12\frac{1}{2}$ " (13.97cm x 31.75cm) Center Panel and
  - (2)  $2\frac{1}{2}$ " x  $27\frac{1}{2}$ " (6.35cm x 69.85cm) for binding
- (7)  $2\frac{1}{2}$ " x WOF (6.35cm x WOF) for binding

### Fabric B, cut:

- (2)  $4\frac{1}{2}$ " x WOF (11.43cm x WOF); sub-cut
  - (2)  $4\frac{1}{2}$ " x  $20\frac{1}{2}$ " (11.43cm x 52.07cm) Border 1 side strips and
  - (2)  $4\frac{1}{2}$ " x  $6\frac{1}{2}$ " (11.43cm x 16.51cm) Border 1 top/bottom strips

### Fabric C, cut:

- (3)  $4\frac{1}{2}$ " x WOF (11.43cm x WOF); sub-cut
  - (2)  $4\frac{1}{2}$ " x  $28\frac{1}{2}$ " (11.43cm x 72.39cm) Border 2 side strips and
  - (2)  $4\frac{1}{2}$ " x  $14\frac{1}{2}$ " (11.43cm x 36.83cm) Border 2 top/bottom strips

### Fabric D, cut:

- (3)  $4\frac{1}{2}$ " x WOF (11.43cm x WOF) for Border 3

### Fabric E, cut:

- (4)  $4\frac{1}{2}$ " x WOF (11.43cm x WOF) for Border 4

### Fabric F, cut:

- (5)  $4\frac{1}{2}$ " x WOF (11.43cm x WOF) for Border 5

### Fabric G, cut:

- (6)  $4\frac{1}{2}$ " x WOF (11.43cm x WOF) for Border 6

### Fabric H, cut:

- (7)  $4\frac{1}{2}$ " x WOF (11.43cm x WOF) for Border 7

### Fabric I, cut:

- (7)  $4\frac{1}{2}$ " x WOF (11.43cm x WOF) for Border 8

### Fabric J, cut:

- (8)  $4\frac{1}{2}$ " x WOF (11.43cm x WOF) for Border 9

## Instructions

*All seam allowances are  $\frac{1}{4}$ " (.64cm) and pieces are sewn right sides together.*

## Quilt Top Assembly

**Note:** Follow the **Quilt Layout** diagram while assembling the quilt.

1. Sew together the (3)  $4\frac{1}{2}$ " (11.43cm) **Fabric D** Border 3 strips end to end using a straight seam. Press the seam allowances open. Cut (2)  $4\frac{1}{2}$ " x  $36\frac{1}{2}$ " (11.43cm x 92.71cm) Border 3 side strips and (2)  $4\frac{1}{2}$ " x  $22\frac{1}{2}$ " (11.43cm x 57.15cm) Border 3 top/bottom strips.
2. Repeat Step 1 to sew together and cut the remaining border strips listed in the table below.

Border – Fabric	Cut (2) Side Border Strips	Cut (2) Top/Bottom Border Strips
Border 4 – <b>Fabric E</b>	$4\frac{1}{2}$ " x $44\frac{1}{2}$ " (11.43cm x 113.03cm)	$4\frac{1}{2}$ " x $30\frac{1}{2}$ " (11.43cm x 77.47cm)
Border 5 – <b>Fabric F</b>	$4\frac{1}{2}$ " x $52\frac{1}{2}$ " (11.43cm x 133.35cm)	$4\frac{1}{2}$ " x $38\frac{1}{2}$ " (11.43cm x 97.79cm)
Border 6 – <b>Fabric G</b>	$4\frac{1}{2}$ " x $60\frac{1}{2}$ " (11.43cm x 153.67cm)	$4\frac{1}{2}$ " x $46\frac{1}{2}$ " (11.43cm x 118.11cm)
Border 7 – <b>Fabric H</b>	$4\frac{1}{2}$ " x $68\frac{1}{2}$ " (11.43cm x 173.99cm)	$4\frac{1}{2}$ " x $54\frac{1}{2}$ " (11.43cm x 138.43cm)
Border 8 – <b>Fabric I</b>	$4\frac{1}{2}$ " x $76\frac{1}{2}$ " (11.43cm x 194.31cm)	$4\frac{1}{2}$ " x $62\frac{1}{2}$ " (11.43cm x 158.75cm)
Border 9 – <b>Fabric J</b>	$4\frac{1}{2}$ " x $84\frac{1}{2}$ " (11.43cm x 214.63cm)	$4\frac{1}{2}$ " x $70\frac{1}{2}$ " (11.43cm x 179.07cm)



# Shot Striped Frames Quilt

3. Sew the Border 1 top/bottom strips to the top and bottom edges of the **Fabric A** Center Panel. Press the seam allowances toward the borders. Sew the Border 1 side strips to the side edges of the Center Panel to complete Border 1. The Quilt Center measures 14½" x 20½" (36.83cm x 52.07cm).
4. Repeat the process in Step 3 to add the Border 2 top/bottom strips, followed by the side strips to the quilt center.
5. Continue adding the Borders 3 through 9, in numerical order, to complete the quilt top.

## Finishing

6. Sew together the 2½" (6.35cm) **Fabric A** binding strips end to end using straight seams. Press seams open. Press the binding strip in half wrong sides together.
7. Layer backing (wrong side up), batting, and quilt top (right side up). Baste the layers together and quilt as desired. Trim excess batting and backing even with the top after quilting is completed.
8. Leaving an 8" (20.32cm) tail of binding, sew the binding to the top of the quilt through all layers matching all raw edges. Miter corners. Stop approximately 12" (30.48cm) from where you started. Lay both loose ends of binding flat along quilt edge. Where the loose ends meet, fold them back on themselves and press to form a crease. Using this crease as your stitching line, sew the two open ends of the binding right sides together. Trim seam to ¼" (.64cm) and press open. Finish sewing binding to quilt.
9. Turn the binding to the back of quilt and hand-stitch in place.

# Shot Striped Frames Quilt

## Quilt Layout

