

Featuring Birds in Paradise by Catalina Estrada

Sonnet in Paradise Quilt

Finished Size: 72" x 78" (1.83m x 1.98m)

Project designed by Ruth Ann Berry

Purchase pattern at quiltersclinic.com

Technique: Pieced | Skill Level: Advanced Beginner



Sonnet in Paradise Quilt

Fabric Requirements

DESIGN	COLOR	ITEM ID	YARDAGE
(A) Bird's Grace	XMULTI	PWCE001.XMULTI	½ yard (0.46m)
(B) Floral Bloom	XBLUE	PWCE002.XBLUE	1 yard (0.91m)
(C) Botanical Life	XSKY	PWCE003.XSKY	⅓ yard (0.30m)
(D) Beautiful Sonnet	XWHITE	PWCE004.XWHITE	⅓ yard (0.30m)
(E) Morning Dahlias	XWHITE	PWCE005.XWHITE	⅔ yard (0.6m)
(F) Goodnight Dahlias	XROYAL	PWCE006.XROYAL	⅓ yard (0.30m)
(G) Beautiful Daisy	XLILAC	PWCE007.XLILAC	⅓ yard (0.30m)
(H) In Harmony	XRED	PWCE008.XRED	⅓ yard (0.30m)
(I) Ripple	XBLUE	PWCE009.XBLUE*	1¼ yards (1.14m)
(J) White Fern	XOMBRE	PWCE010.XOMBRE	1 yard (0.91m)
(K) Carnation Love	XPANEL	PWCE011.XPANEL	1 Panel
(L) Splendid Bouquet	XBLUE	PWCE012.XBLUE	⅔ yard (0.61m)

* includes binding

Backing (Purchased Separately)

44" (1.12m) wide

Morning Dahlias

XWHITE

PWCE005.XWHITE

4½ yards (4.11m)

OR

108" (2.74m) wide

2¼ yards (2.06m)



(A)



(B)



(C)



(D)



(E)



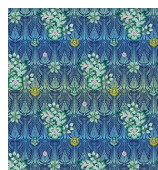
(F)



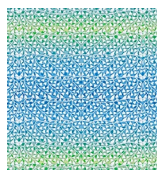
(G)



(H)



(I)



(J)



(K)



(L)



Backing
44"

If kitting, refer to the final pattern for yardage amounts, it is recommended that a sample is made to confirm accuracy.