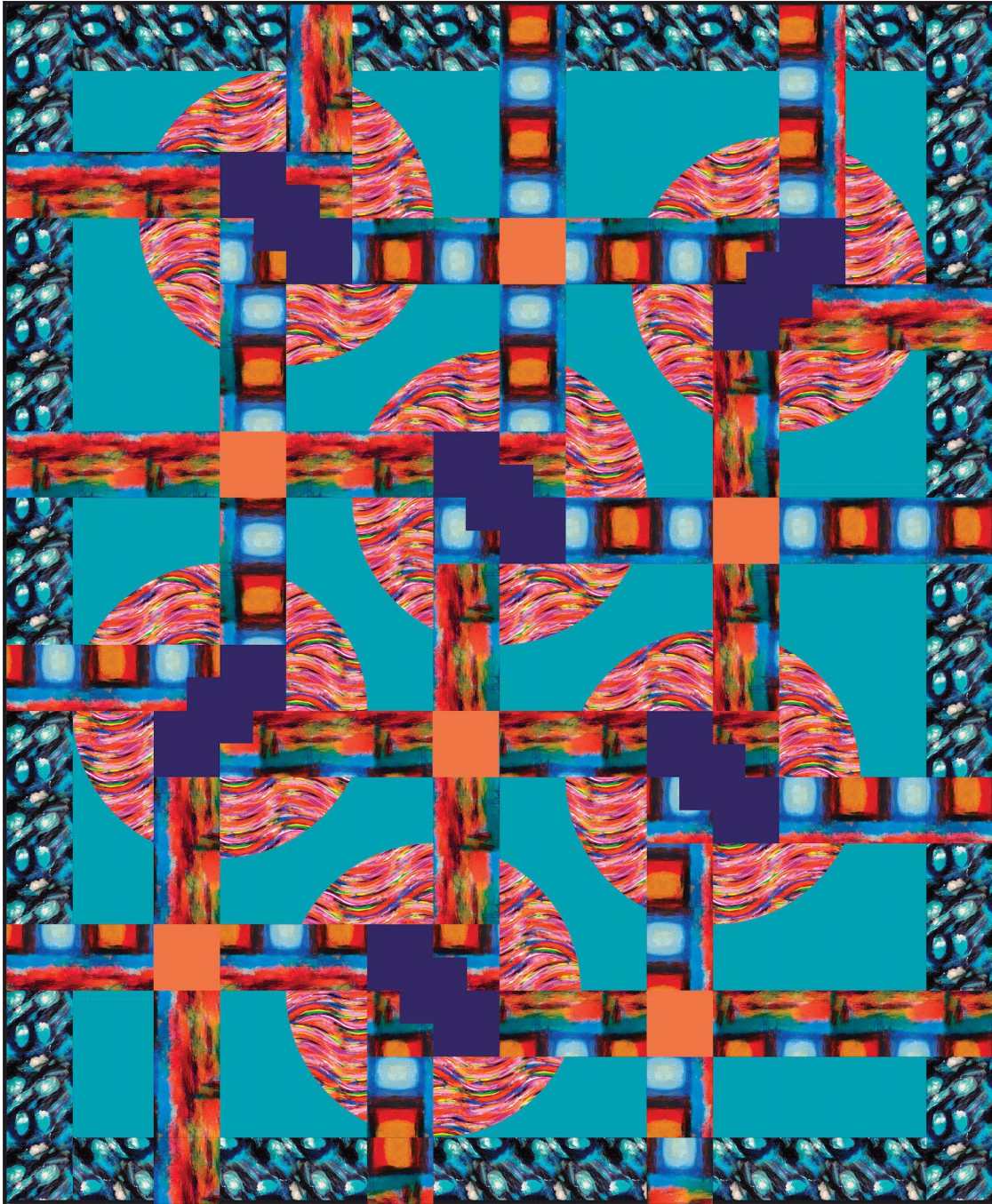


*Free Spirit* 



Featuring Spirit Winds by George Mendoza

## Spin Class Quilt

Finished Size: 67" x 81" (1.70m x 2.06m)

*Project designed by Everyday Stitches*

*Purchase pattern at [everydaystitches.com](http://everydaystitches.com)*

Technique: Pieced | Skill Level: Advanced Beginner

## Fabric Requirements

DESIGN	COLOR	ITEM ID	YARDAGE
(A) Windows to the Soul	KALEIDO	PWGM001.KALEIDO	1 <sup>3</sup> / <sub>4</sub> yards (1.60m)
(B) Star Dust	BLUE	PWGM002.BLUE	1 <sup>1</sup> / <sub>4</sub> yards (1.14m)
(C) Colors of the Wind	KALEIDO	PWGM009.KALEIDO	1 yard (0.91m)
(D) Designer Essential Solids	PARROT BLUE	CSFSESS.PARBL	2 <sup>1</sup> / <sub>2</sub> yards (2.29m)
(E) Designer Essential Solids	DIVA	CSFSESS.DIVAX	<sup>5</sup> / <sub>8</sub> yard (0.57m)
(F) Designer Essential Solids	MESA	CSFSESS.MESAX	<sup>1</sup> / <sub>4</sub> yard (0.23m)
(G) Designer Essential Solids	LICORICE	CSFSESS.LICOR*	<sup>5</sup> / <sub>8</sub> yard (0.57m)

\* includes binding

## Backing (Purchased Separately)

**44" (1.12m) wide**

Reflections

**OR**

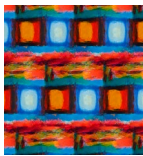
**108" (2.74m) wide**

Kaleido

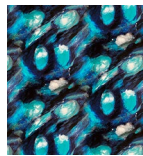
PWGM004.KALEIDO

4<sup>1</sup>/<sub>2</sub> yards (4.11m)

2<sup>1</sup>/<sub>4</sub> yards (2.06m)



(A)



(B)



(C)



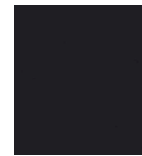
(D)



(E)



(F)



(G)



Backing  
44"

*If kitting, refer to the final pattern for yardage amounts, it is recommended that a sample is made to confirm accuracy.*