

# Spirit Winds Quilt

Featuring Spirit Winds by George Mendoza

Bright and bold Spirit Winds prints are offset by a royal solid for a stunning, yet, easy to make quilt.

<b>Collection:</b>	Spirit Winds by George Mendoza
<b>Technique:</b>	Pieced
<b>Skill Level:</b>	Confident Beginner
<b>Finished Sizes:</b>	<b>Finished Size:</b> 80" x 80" (203.20cm x 203.20cm) <b>Finished Block Size:</b> 15" x 15" (38.10cm x 38.10cm)

*All possible care has been taken to assure the accuracy of this pattern. We are not responsible for printing errors or the manner in which individual work varies. Please read the instructions carefully before starting this project. If kitting, it is recommended a sample is made to confirm accuracy.*

Project designed by Brittney Anderson | Tech edited by Alison M. Schmidt

## Fabric Requirements

DESIGN	COLOR	ITEM ID	YARDAGE
(A) Windows to the Soul	KALEIDO	PWGM001.KALEIDO	½ yard (0.46m)
(B) Star Dust	BLUE	PWGM002.BLUE	½ yard (0.46m)
(C) Maze of Mystery	BLACK	PWGM003.BLACK*	¾ yard (0.69m)
(D) Reflections	KALEIDO	PWGM004.KALEIDO	½ yard (0.46m)
(E) Sun Dancer	BLUE	PWGM005.BLUE	2 yards (1.83m)
(F) Starry, Starry Night	BLUE	PWGM006.BLUE	½ yard (0.46m)
(G) Twilight Dreams	KALEIDO	PWGM007.KALEIDO	½ yard (0.46m)
(H) Painted Bubbles	RED	PWGM008.RED	½ yard (0.46m)
(I) Colors of the Wind	KALEIDO	PWGM009.KALEIDO	½ yard (0.46m)
(J) Little Windows to the Soul	BLUE	PWGM010.BLUE	½ yard (0.46m)
(K) Designer Essential Solids	ROYAL	CSFSESS.ROYAL	1⅞ yards (1.71m)

\* binding

## Backing (Purchased Separately)

44" (1.12m) wide

Maze of Mystery

BLACK

PWGM003.BLACK

7⅝ yards (6.97m)

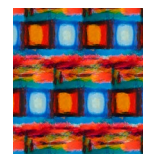
OR

108" (2.74m) wide

2⅝ yards (2.40m)

## Additional Recommendations

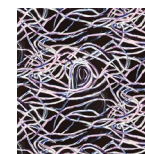
- 100% cotton thread
- 88" x 88" (2.24m x 2.24m) batting



(A)



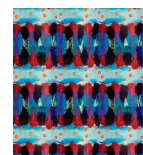
(B)



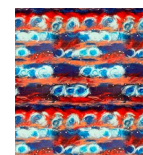
(C)



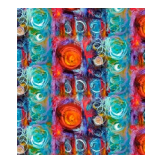
(D)



(E)



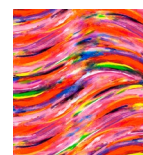
(F)



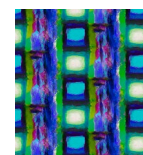
(G)



(H)



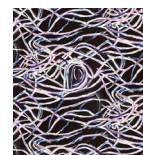
(I)



(J)



(K)



Backing  
44"



## Cutting

**WOF = Width of Fabric**

### Notes:

- Follow **Fabric A Cutting Diagram** to cut **Fabric A**. For all other fabrics except **Fabrics C, E and K**, cut in a similar fashion to **Fabric A**, adjusting the quantity of border pieces as listed.
- All cut sizes are listed as width (horizontal dimension) x height (vertical dimension) in this pattern, to help keep the directional prints oriented as designed.

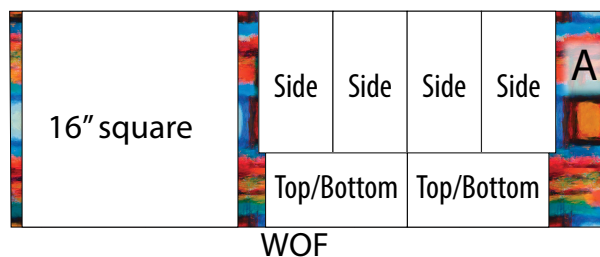
### Fabrics A, B, D, F- J, cut from each:

(1) 16" x WOF; subcut

(1) 16" square

Trim the remaining WOF strip down into (1) each 10½" x WOF and 5½" x WOF. Then follow cutting instructions below for each fabric to sub-cut the needed quantity of border pieces from WOF strips.

**Fabric A Cutting Diagram**



### Fabric A, cut:

- (4) 5½" wide x 10½" high side border pieces  
(2) 10½" x 5½" high top/bottom border pieces

### Fabric B, cut:

- (2) 5½" wide x 10½" high side border pieces  
(2) 10½" x 5½" high top/bottom border pieces

### Fabrics D, F, and G, cut from each:

- (2) 5½" wide x 10½" high side border pieces  
(1) 10½" x 5½" high top/bottom border pieces

### Fabric H, cut:

- (1) 5½" wide x 10½" high side border pieces  
(2) 10½" x 5½" high top/bottom border pieces

### Fabric I, cut:

- (3) 5½" wide x 10½" high side border pieces  
(2) 10½" x 5½" high top/bottom border pieces

### Fabric J, cut:

- (3) 10½" x 5½" high top/bottom border pieces

### Fabric C, cut:

- (9) 2½" x WOF for binding

### Fabric E, fussy cut:

- (8) 5½" x WOF borders with one edge along a red/black stripe

### Fabric K, cut:

- (4) 16" x WOF; subcut  
(8) 16" squares

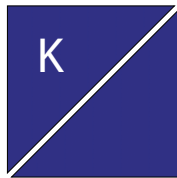
## Sewing

**Note:** Use a  $\frac{1}{4}$ " (.64cm) seam allowance throughout. Sew all pieces with right sides together and raw edges even using matching thread.

### Block Construction

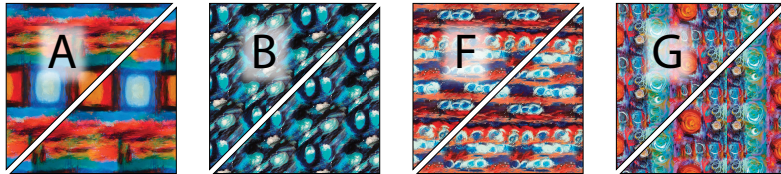
1. Cut all **Fabric K** 16" squares in half diagonally once. **Fig. 1**

**Fig. 1**



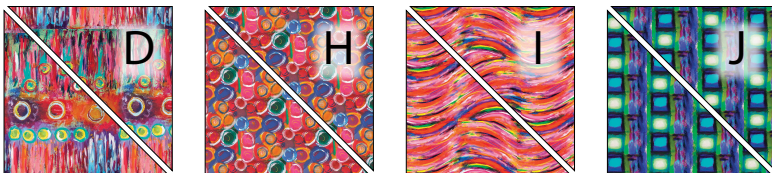
2. Cut each **Fabric A, B, F, and G** 16" square in half diagonally once with the prints oriented as shown and all diagonal cuts from bottom left to top right. **Fig. 2**

**Fig. 2**



3. Cut each **Fabric D, H, I, and J** 16" square in half diagonally once with the prints oriented as shown and all diagonal cuts from bottom right to top left (the opposite of the previous step). **Fig. 3**

**Fig. 3**



4. Sew a **Fabric K** 16" triangle to each of the **Fabric A, B, D, F, G, H, I, and J** 16" triangles along the long sides to create (2) of each block (16 total). Press seam allowances towards **Fabric K**. Then trim each block to 15 $\frac{1}{2}$ " square (unfinished) keeping the diagonal seam centered in the corners. **Fig. 4**

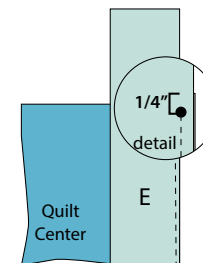
**Fig. 4**



## Quilt Top Assembly

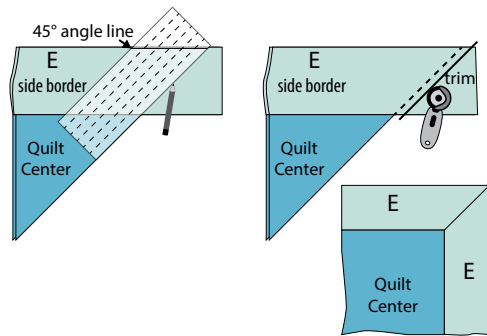
5. Noting **Quilt Layout** (page 6) arrange the blocks in (4) rows of (4) blocks each, rotating the blocks as shown. Sew the blocks into rows. Sew rows together. Quilt center measures 60 $\frac{1}{2}$ " square (unfinished).
6. Sew (2) **Fabric E** 5 $\frac{1}{2}$ " x WOF strips together end-to-end, matching the orientation of the fussy-cut stripes, to make an inner border strip. Make a total of (4) inner border strips.
7. Center a **Fabric E** border on each side of the quilt center making sure the fussy-cut stripes are oriented the same on all sides. Stitch borders to sides, starting and stopping  $\frac{1}{4}$ " from corners of quilt center. Do not trim. Press borders away from the quilt center. **Fig. 5**

**Fig. 5**



8. Working with 1 corner at a time, fold the quilt right sides together so the outside edges of the borders line up. Using a ruler with a 45° line mark from the end of border seams to outer edges of borders. Stitch along marked line. Open up and check from the front that the corner will be lay flat, then trim seam allowance to  $\frac{1}{4}$ ". Press corner seam open. Repeat on remaining corners. **Fig. 6**

**Fig. 6**



9. Arrange (7)  $10\frac{1}{2}$ " wide x  $5\frac{1}{2}$ " high top/bottom border pieces on the top and bottom of quilt. Stitch pieces into borders ( $5\frac{1}{2}$ " x  $70\frac{1}{2}$ " unfinished). Sew borders to the top and bottom of quilt.
10. Arrange (8)  $5\frac{1}{2}$ " wide x  $10\frac{1}{2}$ " high side border pieces along the left and right sides of the quilt. Stitch pieces into borders ( $5\frac{1}{2}$ " x  $80\frac{1}{2}$ " unfinished). Sew borders to the left and right sides of quilt.

## Finishing

11. Layer the backing (right side down), batting, and quilt top (right side up). Quilt or tie as desired.
12. Sew together the  $2\frac{1}{2}$ " **Fabric C** binding strips end-to-end using diagonal seams. Press seams open. Press strip in half lengthwise with wrong sides together.
13. Carefully trim backing and batting even with quilt top.
14. Leaving an 8" tail of binding, sew binding to top of quilt through all layers matching all raw edges. Miter corners. Stop approximately 12" from where you started. Lay both loose ends of binding flat along quilt edge. Where these two loose ends meet, fold them back on themselves and press to form a crease. Using this crease as your stitching line, sew the two open ends of the binding together right sides together. Trim seam to  $\frac{1}{4}$ " and press open. Finish sewing binding to quilt.
15. Turn binding to back of quilt and blind stitch in place.

## Quilt Layout

