

Migration Quilt

**Featuring Wings of Wonder by
Sue Penn**

Technique: Pieced

Skill Level: Advanced Beginner

Finished Project Size:

48" x 48" (1.22m x 1.22m)

Finished Block Size:

12" x 12" (30.48cm x 30.48cm)

Project designed by: Sue Penn

All possible care has been taken to ensure the accuracy of this pattern. We are not responsible for printing errors or the manner in which individual work varies. Please read the instructions carefully before starting this project. If kitting, it is recommended a sample is made to confirm accuracy.

FABRIC REQUIREMENTS (Tech edited by: Alison M. Schmidt)

	Design	Color	Item ID	Yardage
A	Glow	Pink	PWSP004.PINK	1/3 yard (0.30m)
B	Tapestry	Blue	PWSP114.BLUE	3/4 yard (0.69m)
C	Fiesta	Blue	PWSP115.BLUE	1/3 yard (0.30m)
D	Lacey	Red	PWSP117.RED	1/2 yard (0.46m)
E	Pebbles	Multi	PWSP118.MULTI	1/4 yard (0.23m)
F	Circle Pop	Black	PWSP119.BLACK	3/4 yard (0.69m)
G	Medallions	Navy	PWSP016.NAVY	1/4 yard (0.23m)
H	Brushstrokes	Green	PWSP018.GREEN	1/4 yard (0.23m)
I	Splatters*	Bumblebee	PWSP095.BUMBLEBEE*	1 1/8 yards (1.03m)

* includes binding

Backing (Purchased Separately)

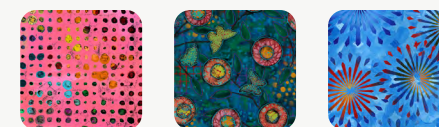
44" (1.12m) wide

Wings	Multi	PWSP120.MULTI	3 1/3 yards (3.05m)
-------	-------	---------------	---------------------

ADDITIONAL REQUIREMENTS

- 100% cotton thread
- 56" x 56" (1.42m x 1.42m) batting

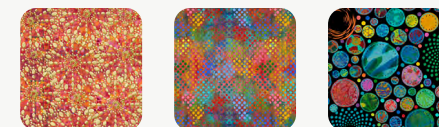
Swatches



A

B

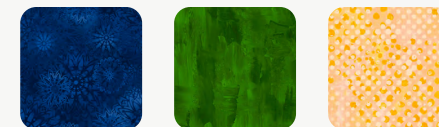
C



D

E

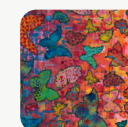
F



G

H

I



44"

CUTTING

WOF = Width of Fabric

Note: Less experienced quilters may wish to cut the **Fabric B** and **I** strips for the half-rectangle units a little wider for easier piecing and trimming. If so, cut all 3" strips/3" x 6" rectangles at either 3¼" or 3½".

From Fabrics A and C, cut from each:

- (3) 2½" x WOF, subcut from 1 strip only
- (1) 2½" x 20" strip

From Fabric B, cut:

- (6) 3" x WOF; subcut
- (36) 3" x 6"
- (4) 2½" squares
- (2) 2½" x WOF; subcut
- (32) 2½" squares (for a total of 36)

From Fabric D, cut:

- (5) 2½" x WOF; subcut from 1 strip only
- (2) 2½" x 20" strips

From Fabric E, cut:

- (4) 1½" x WOF for inner borders

From Fabric F, cut:

- (4) 4½" x WOF for outer borders
- (2) 1½" x WOF; subcut
- (8) 1½" x 3½"
- (8) 1½" x 2½"
- (8) 1½" squares

From Fabric G, cut:

- (2) 2½" x WOF for strip sets

From Fabric H, cut:

- (2) 2½" x WOF for strip sets

From Fabric I, cut:

- (6) 3" x WOF; subcut
- (36) 3" x 6"
- (6) 2½" x WOF for binding
- (1) 1½" x WOF; subcut
- (24) 1½" squares

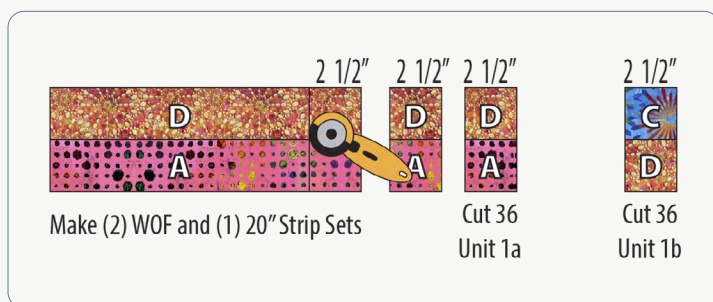
INSTRUCTIONS

Use a $\frac{1}{4}$ " seam allowance throughout. Sew all pieces with right sides together and raw edges even using matching thread. Press after each seam.

Block Construction

- 1 Stitch 1 each **Fabric A** and **D** $2\frac{1}{2}$ " x WOF strips together lengthwise. Press towards **Fabric D**. Measure to make sure the strip set is $4\frac{1}{2}$ " high, including seam allowances. Make 1 more WOF strip set and (1) 20"-long strip set. From these, cut (36) $2\frac{1}{2}$ "-wide Unit 1a ($2\frac{1}{2}$ " x $4\frac{1}{2}$ " unfinished). In the same manner, make 2 and a half strip sets with **Fabric C** and **D** $2\frac{1}{2}$ " strips and cut into (36) $2\frac{1}{2}$ "-wide Unit 1b. **Fig. 1**

Fig. 1



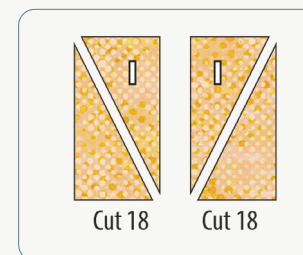
- 2 Sew 1 each Units 1a and 1b together, alternating the **Fabric D** squares. Press open. Make a total of 36 Unit 2 ($4\frac{1}{2}$ " square unfinished). **Fig. 2**

Fig. 2



- 3 Cut each **Fabric I** 3" x 6" piece in half diagonally, 18 in 1 direction and 18 in the opposite direction. **Fig. 3**

Fig. 3



- 4** Cut each **Fabric B** 3" x 6" piece in half diagonally, 18 in 1 direction and 18 in the opposite direction. **Fig. 4**

Fig. 4



- 5** Stitch B and I triangles together as shown to make 36 each Units 3 and 4. Press towards the darker fabric. **Fig. 5**

Fig. 5



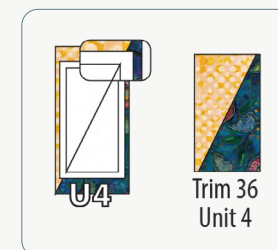
- 6** Place the Unit 3 Trimming Template on a Unit 3, aligning the diagonal line on the trimming template with the seam. Note that when the line is aligned properly with the seam line, the seam will not align with the corners of the template (as shown in the close-up). Trim all Unit 3 (2½" x 4½" unfinished). **Fig. 6**

Fig. 6



- 7** In the same manner, trim all Unit 4. **Fig. 7**

Fig. 7



8 Arrange 1 **Fabric B** 2½" square and 1 each of Units 2, 3, and 4 in 2 rows as shown. Stitch into rows, pressing seam allowances in rows in opposite directions so seams will nest. Press away from Units 3 and 4. Sew rows together. Make a total of 36 Unit 5 (6½" square unfinished). **Fig. 8**

9 Arrange 4 Unit 5 in 2 rows as shown, noting orientation. Stitch into rows, pressing seam allowances in rows in opposite directions so seams will nest. Press towards **Fabric B**. Sew rows together. Press open. Make a total of 9 blocks (12½" square unfinished). **Fig. 9**

Fig. 8

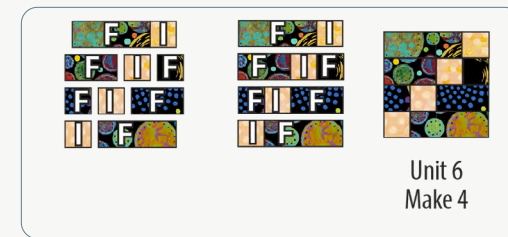


Fig. 9



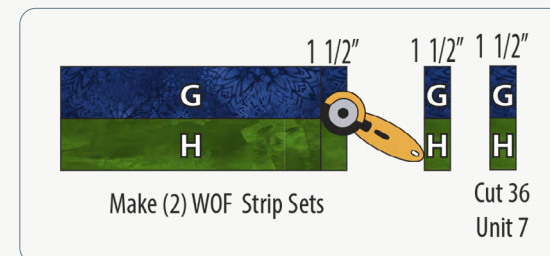
10 Arrange 4 **Fabric I** 1½" squares and 2 each **Fabric F** 1½" x 3½" pieces, 1½" x 2½" pieces, and 1½" squares in 4 rows as shown. Stitch into rows. Press towards **Fabric F**. Sew rows together. Make a total of 4 Unit 6 (4½" square unfinished). **Fig. 10**

Fig. 10



11 Stitch 1 each **Fabric G** and **H** 2½" x WOF strips together lengthwise. Press towards the darker fabric. Measure to make sure the strip set is 4½" high, including seam allowances. Make a second strip set. From these, cut (36) 1½" - wide Unit 7 (1½" x 4½" unfinished). **Fig. 11**

Fig. 11



- 12** Unpick the seam on the leftover second strip set, and cut (4) **Fabric G** 1½" x 2½" rectangles. Set these aside with Unit 7 for the pieced border.

QUILT TOP ASSEMBLY

- 13** Noting **Quilt Layout** diagram (page 8), arrange the blocks in 3 rows of 3. Sew into rows. Press the seams in each row in the same direction, alternating direction from row to row so seams will nest. Sew rows together. Press seams down. Quilt center measures 36½" square (unfinished).
- 14** Measure quilt center width and height. Cut (4) **Fabric E** borders to fit (36½" long). Sew **Fabric E** borders to right and left sides of quilt center. Then sew a **Fabric I** 1½" square to both ends of 2 remaining **Fabric E** borders. Add to top and bottom of quilt.
- 15** Arrange 9 of Unit 7 and 1 **Fabric G** 1½" x 2½" piece each in columns on right and left sides of quilt, noting orientation of **Fabric G** and **H**. Stitch into side borders (1½" x 38½" unfinished). Add to right and left sides of quilt.

- 16** Arrange 2 **Fabric I** 1½" squares, 9 of Unit 7, and 1 **Fabric G** 1½" x 2½" piece each in rows above and below quilt, noting orientation of **Fabric G** and **H**. Stitch into top and bottom borders (1½" x 40½" unfinished). Add to top and bottom of quilt.
- 17** Measure quilt width and height. From **Fabric F** 4½" x WOF strips, cut (4) borders to fit (40½" long). Stitch **Fabric F** borders to right and left sides of quilt center. Sew a Unit 6 to both ends of remaining 2 **Fabric F** borders, noting orientation of **Fabric I** squares. Add to top and bottom of quilt to complete the quilt (48½" x 48½" unfinished).

FINISHING

- 18** Sew together the 2½" **Fabric I** binding strips end-to-end using diagonal seams. Press seams open. Press the binding strip in half wrong sides together.
- 19** Layer backing (wrong side up), batting, and quilt top (right side up). Baste the layers together and quilt as desired. Trim excess batting and backing even with the top after quilting is completed.

20 Leaving an 8" tail of binding, sew the binding to the top of the quilt through all layers matching all raw edges. Miter corners. Stop approximately 12" from where you started. Lay both loose ends of binding flat along quilt edge. Where the loose ends meet, fold them back on themselves and press to form a crease. Using this crease as your stitching line, sew the two open ends of the binding right sides together. Trim seam to ¼" and press open. Finish sewing binding to quilt.

21 Turn the binding to the back of quilt and hand-stitch in place.

Quilt Layout

