

Sunset Boulevard Quilt

Featuring Kaffe Fassett Collective
February 2020

Oranges, reds and purples shine all the time on
Sunset Boulevard!

Collection:	Kaffe Fassett Collective February 2020
Technique:	Piecing, Quilting
Skill Level:	Advanced Beginner
Finished Size:	Finished Size: 68" x 76" (172.72cm x 193.04cm) Finished Block Size: 4" x 4" (10.16cm x 10.16cm)

All possible care has been taken to assure the accuracy of this pattern. We are not responsible for printing errors or the manner in which individual work varies. Please read the instructions carefully before starting this project. If kitting it is recommended a sample is made to confirm accuracy.



Sunset Boulevard Quilt

Project designed by Kaffe Fasset

Tech edited by Alison M. Schmidt

Fabric Requirements

DESIGN	COLOR	ARTICLE CODE	YARDAGE
(A) Geodes	Black	PWPJ099.BLACK	Fat Quarter
(B) Promenade Stripe	Hot	PWGP178.HOT	1 $\frac{1}{8}$ yards (1.03m)
(C) Mad Plaid	Maroon	PWBM037.MAROO	$\frac{3}{8}$ yard (0.34m)
(D) Oranges	Red	PWGP177.RED	1 $\frac{1}{4}$ yards (1.14m)
(E) Oranges	Lime	PWGP177.LIME	1 $\frac{1}{4}$ yards (1.14m)
(F) Oranges	Orange	PWGP177.ORANGE	1 $\frac{1}{4}$ yards (1.14m)
(G) Oranges	Purple	PWGP177.PURPLE	1 $\frac{1}{4}$ yards (1.14m)
(H) Oranges	Blue	PWGP177.BLUE	1 $\frac{1}{4}$ yards (1.14m)
(I) Oranges	Yellow	PWGP177.YELLOW	1 $\frac{1}{4}$ yards (1.14m)
(J) Shot Cotton	Camelia	SCPG109	1 $\frac{3}{4}$ yards (1.60m)
(K) Shot Cotton	Blood Orange	SCPG110	$\frac{1}{2}$ yard (0.46m)
(L) Shot Cotton	Heliotrope	SCPG106	$\frac{1}{2}$ yard (0.46m)
(M) Shot Cotton	Wine	SCPG103	$\frac{1}{2}$ yard (0.46m)
(N) Shot Cotton	Paprika	SCPG101	$\frac{1}{2}$ yard (0.46m)
(O) Shot Cotton	Pimento	SCPG116	$\frac{1}{2}$ yard (0.46m)
(P) Enchanted	Red	PWGP172.REDXX	1 $\frac{1}{4}$ yards (1.14m)
(Q) Spot	Black	GP70.BLACK*	$\frac{5}{8}$ yard (0.57m)

* includes binding

Backing (Purchased Separately)

44" (111.76cm) wide

Oranges Red PWGP177.RED 4 $\frac{7}{8}$ yards (4.46m)

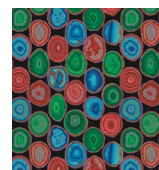
OR

108" (274.32cm) wide

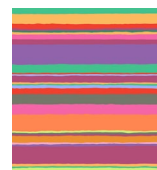
Fruit Mandala Pink QBGP003.2PINK 2 $\frac{1}{4}$ yards (2.06m)

Additional Requirements

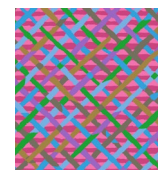
- The Kaffe Collective Aurifil thread 100% cotton
- 76" x 84 (193.04cm x 213.36cm) batting



(A)



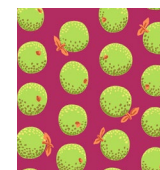
(B)



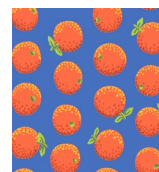
(C)



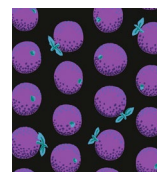
(D)



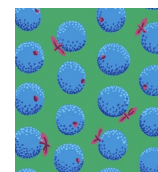
(E)



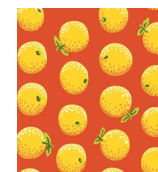
(F)



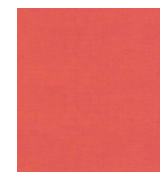
(G)



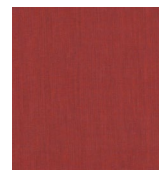
(H)



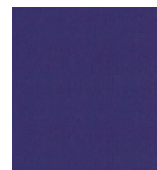
(I)



(J)



(K)



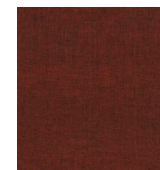
(L)



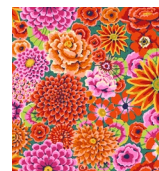
(M)



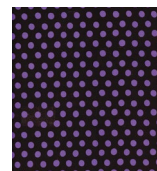
(N)



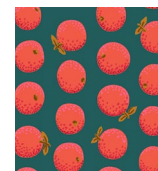
(O)



(P)



(Q)



Backing
44"
(111.76cm)



Backing
108"
(274.32cm)

Cutting:

WOF = Width of Fabric

LOF = Length of Fabric.

Fabric A, fussy cut:

(1) $6\frac{1}{2}$ " x $14\frac{1}{2}$ " (16.51cm x 36.83cm) rectangle, centering over the vertical lines of geodes

Fabric B, cut:

(4) $9\frac{1}{2}$ " x LOF (24.13cm x WOF); sub-cut (2) $9\frac{1}{2}$ " x $36\frac{1}{2}$ " (24.13cm x 92.71cm) and (2) $9\frac{1}{2}$ " x $28\frac{1}{2}$ " (24.13cm x 72.39cm) rectangles

Fabric C, cut:

(4) $2\frac{1}{2}$ " x WOF (6.35cm x WOF); sub-cut (2) $2\frac{1}{2}$ " x $28\frac{1}{2}$ " (6.35cm x 72.39cm) and (2) $2\frac{1}{2}$ " x $32\frac{1}{2}$ " (6.35cm x 82.55cm) rectangles

Fabrics D through I, fussy cut from each:

(32) $4\frac{1}{2}$ " (11.43cm) squares, centering each square over an orange

Fabric J, cut:

(24) $2\frac{1}{2}$ " x WOF (6.35cm x WOF); sub-cut (384) $2\frac{1}{2}$ " (6.35cm) squares

Fabric K, cut:

(5) $2\frac{1}{2}$ " x WOF (6.35cm x WOF); sub-cut (80) $2\frac{1}{2}$ " (6.35cm) squares

Fabrics L through O, cut from each:

(5) $2\frac{1}{2}$ " x WOF (6.35cm x WOF); sub-cut (76) $2\frac{1}{2}$ " (6.35cm) squares

Fabric P, cut:

(8) $4\frac{1}{2}$ " x WOF (11.43cm x WOF) for the border

Fabric Q, cut:

(8) $2\frac{1}{2}$ " x WOF (6.35cm x WOF) for binding

Instructions

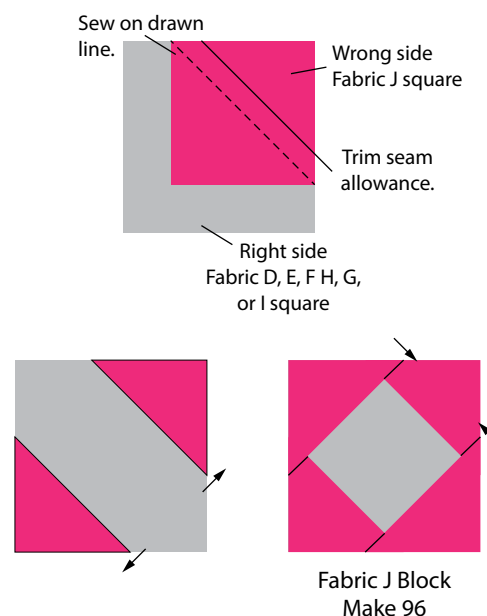
All seam allowances are $\frac{1}{4}$ " (.64cm) and pieces are sewn right sides together.

Blocks

1. Draw a line along one diagonal on the wrong side of the (384) **Fabric J**, (80) **Fabric K** and (76) **Fabric L, M, N** and **O** squares. Alternately, skip marking the lines and place a line of tape on your machine bed marking the center needle position (the stitching line). Keep 2 corners of the small squares aligned with the tape line as you sew in the following step.
2. Randomly select a $4\frac{1}{2}$ " (11.43cm) square of **Fabric D, E, F, G, H** or **I**. Place a **Fabric J** square on the right upper corner of the $4\frac{1}{2}$ " (11.43cm) square, right sides together, matching the raw edges and positioning the drawn line so it runs across the corner. Sew along the drawn line and trim the seam allowance to $\frac{1}{4}$ " (.64cm). Press the seam allowance towards **Fabric J**. (**Fig. 1**) Repeat to sew a **Fabric J** square on the lower left corner. Repeat again to sew a **Fabric J** square to the remaining two corners of the $4\frac{1}{2}$ " (11.43cm) square,

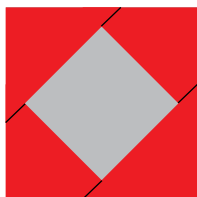
pressing seam allowances towards the center. Trim if needed to square up to $4\frac{1}{2}$ " (11.43cm), to complete a **Fabric J** Block. Repeat to make (96) **Fabric J** Blocks ($4\frac{1}{2}$ " (11.43cm) square).

Fig. 1

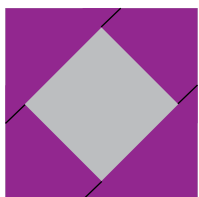


3. Repeat step 2, replacing **Fabric J** with the fabric indicated in the block name to make (20) **Fabric K** Blocks and (19) **Fabric L, M, N** and **O** Blocks (96 total). (**Fig. 2**)

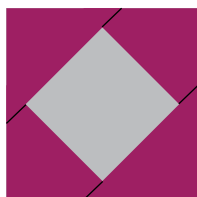
Fig. 2



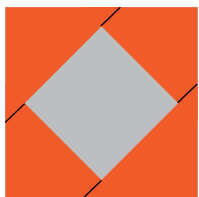
Fabric K Block
Make 20



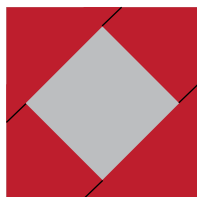
Fabric L Block



Fabric M Block



Fabric N Block



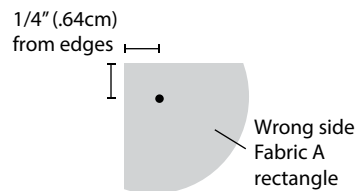
Fabric O Block

Make 19 of each

Center Panel

4. On the wrong side of the **Fabric A** rectangle, draw a dot in each corner $\frac{1}{4}$ " (.64cm) from the edges. (**Fig. 3**)

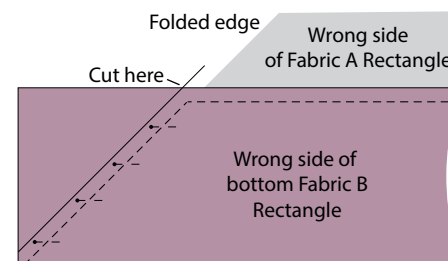
Fig. 3



5. Find the center of the left-hand side of the **Fabric A** rectangle by folding it in half and marking with pins. Similarly find the center along the length of (1) $9\frac{1}{2}$ " x $36\frac{1}{2}$ " (24.13cm x 92.71cm) **Fabric B** inner border rectangle and mark.
6. With the **Fabric A** rectangle on top, pin the **Fabric B** rectangle to the left edge, matching the centers (the **Fabric B** rectangle will be longer than the **Fabric A** rectangle on both ends). Sew along the pinned edge starting and stopping at the marked dots, backstitch at each end. Press the seam allowance towards the border.
7. Repeat the processes in Steps 5 and 6 to sew the remaining $9\frac{1}{2}$ " x $36\frac{1}{2}$ " (24.13cm x 92.71cm) **Fabric B** rectangle to the right-hand side of the **Fabric A** rectangle and a $9\frac{1}{2}$ " x $28\frac{1}{2}$ " (24.13cm x 72.39cm) **Fabric B** rectangle to the top and bottom edges. Press the seam allowances of the top and bottom seams towards the center panel.

8. Fold the quilt top center right sides together through the center **Fabric A** rectangle, so the left-hand **Fabric B** border aligns with the bottom **Fabric B** border, and they form a point at the bottom left corner. Lay flat and adjust the **Fabric A** and **B** rectangles so they lay flat and the seams nest, and pin. Draw a line continuing the 45° fold from the corner of the center panel across the **Fabric B** rectangle. Sew along the draw line starting at the **Fabric A/B** seam. (**Fig. 4**) Open the quilt top and check to see the mitered corner lays flat. Trim the seam allowance to $\frac{1}{4}$ " (.64cm) and press open.

Fig. 4



9. Repeat the process in Step 8 to finish the remaining three mitered corners of the Center Unit ($24\frac{1}{2}$ " x $32\frac{1}{2}$ " (62.23cm x 82.55cm)).



Sunset Boulevard Quilt

10. Sew a $2\frac{1}{2}$ " x $32\frac{1}{2}$ " (6.35cm x 82.55cm) **Fabric C** rectangle to 2 opposite sides of the Center Unit, followed by a $2\frac{1}{2}$ " x $28\frac{1}{2}$ " (6.35cm x 72.39cm) **Fabric C** rectangle to the top and bottom to complete the Quilt Center ($28\frac{1}{2}$ " x $36\frac{1}{2}$ " (72.39cm x 92.71cm)).

Quilt Top Assembly

Note: Follow the **Quilt Layout** diagram while assembling the quilt.

11. Sew (2) **Fabric J** Blocks alternating with (2) Blocks, randomly picked from **Fabric K** through **O** into a Row 1 unit ($4\frac{1}{2}$ " x $16\frac{1}{2}$ " (11.43cm x 41.91cm)). Press the seam allowances towards the **Fabric J** Blocks. Repeat to make a total of (18) Row 1 units.
12. Sew (9) Row 1 units together to make a Side Panel, flipping every other Row so the **Fabric J** Blocks is at the right-hand side ($16\frac{1}{2}$ " x $36\frac{1}{2}$ " (41.19cm x 92.71cm)). Press all the seam allowances in the same direction. Repeat to make a second Side Panel.
13. Sew a Side Panel to 2 opposite sides of the Center Panel, noting the placement of the **Fabric J** Blocks ($36\frac{1}{2}$ " x $60\frac{1}{2}$ " (92.71cm x 153.67cm)) on the upper outer corners. Press the seam allowances towards the Center Panel.
14. Sew (8) **Fabric J** Blocks, alternating with (7) Blocks randomly picked from **Fabric K** through **O** into a Row 2 unit ($4\frac{1}{2}$ " x $60\frac{1}{2}$ " (11.43cm x 153.67cm)). Press seam allowances towards the **Fabric J** Blocks. Repeat to make (4) Row 2 units.
15. Sew (8) Blocks randomly picked from **Fabric K** through **O**, alternating with (7) **Fabric J** Blocks into a Row 3 unit ($4\frac{1}{2}$ " x $60\frac{1}{2}$ " (11.43cm x 153.67cm)). Press the seam allowances towards the **Fabric J** Blocks. Repeat to make (4) Row 3 units.
16. Sew a Row 2 to the top of each Row 3. Sew (2) Row pairs together to complete the Top and Bottom Panels ($16\frac{1}{2}$ " x $60\frac{1}{2}$ " (41.19cm x 153.67cm)). Press all the seam allowances in the same direction.
17. Noting the orientation of the outer J Blocks/Row 2 units, sew the Top and Bottom Panels to the Quilt Center ($60\frac{1}{2}$ " x $68\frac{1}{2}$ " (153.67cm x 173.99cm)).
18. Sew (2) $4\frac{1}{2}$ " (11.43cm) **Fabric P** strips together end to end. Repeat to make (4) strip pairs. Cut (4) $4\frac{1}{2}$ " x $68\frac{1}{2}$ " Border strips.
19. Sew a Border strip to each side of the Quilt Center, followed by one to the top and the bottom to complete the Quilt Top ($68\frac{1}{2}$ " x $76\frac{1}{2}$ " (173.99cm x 194.31cm)).

Finishing

20. Sew together the $2\frac{1}{2}$ " (6.35cm) **Fabric Q** binding strips end to end using diagonal seams. Press seams open. Press the binding strip in half wrong sides together.
21. Layer backing (wrong side up), batting, and quilt top (right side up). Baste the layers together and quilt as desired. Trim excess batting and backing even with the top (square side edges if not completed in Step 5) after quilting is completed.

22. Leaving an 8" (20.32cm) tail of binding, sew the binding to the top of the quilt through all layers matching all raw edges. Miter corners. Stop approximately 12" (30.48cm) from where you started. Lay both loose ends of binding flat along quilt edge. Where the loose ends meet, fold them back on themselves and press to form a crease. Using this crease as your stitching line, sew the two open ends of the binding right sides together. Trim seam to $\frac{1}{4}$ " (.64cm) and press open. Finish sewing binding to quilt.
23. Turn the binding to the back of quilt and hand-stitch in place.

Quilt Layout

