



Featuring Birds in Paradise by Catalina Estrada

Talmadge Quilt

Finished Size: 71" (1.80m) Square

Project designed by Lisa Alley - Bear Hug Quiltworks

Purchase pattern at bearhugquiltworks.com

Technique: Pieced | Skill Level: Advanced Beginner



Talmadge Quilt

Fabric Requirements

DESIGN	COLOR	ITEM ID	YARDAGE
(A) Floral Bloom	XBLUE	PWCE002.XBLUE	$\frac{3}{8}$ yard (0.34m)
(B) Botanical Life	XSKY	PWCE003.XSKY	$\frac{5}{8}$ yard (0.57m)
(C) In Harmony	XRED	PWCE008.XRED	$\frac{5}{8}$ yard (0.57m)
(D) Ripple	XBLUE	PWCE009.XBLUE	$\frac{5}{8}$ yard (0.57m)
(E) White Fern	XOMBRE	PWCE010.XOMBRE*	$\frac{5}{8}$ yard (0.57m)
(F) Carnation Love	XPANEL	PWCE011.XPANEL	1 Panel
(G) Splendid Bouquet	XBLUE	PWCE012.XBLUE	1½ yards (1.37m)
(H) Designer Essential Solids	Whimsy	CSFSESS.WHIMSY	2¾ yards (2.51m)

* includes binding

Backing (Purchased Separately)

44" (1.12m) wide

Beautiful Sonnet

OR

108" (2.74m) wide

XWHITE

PWCE004.XWHITE

4 yards (3.66m)

2 yards (1.83m)



(A)



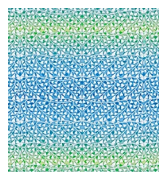
(B)



(C)



(D)



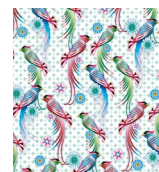
(E)



(F)



(G)



Backing
44"

*If kitting, refer to the final pattern for yardage amounts,
it is recommended that a sample is made to confirm accuracy.*