

*Free Spirit* 



Featuring Natural Affinity by Shell Rummel

## The Eliza Quilt

Finished Size: 57" x 71" (1.45m x 1.80m)

*Project designed by Erica Jackman*

*Purchase pattern at [kitchentablequilting.com](http://kitchentablequilting.com)*

Technique: Pieced

[freespiritfabrics.com](http://freespiritfabrics.com)

## Fabric Requirements

DESIGN	COLOR	ITEM ID	YARDAGE
<b>(A) Shore to Sky</b>	BEACH	PWSR047.BEACH	1/3 yard (0.30m)
<b>(B) I Must Have Flowers</b>	APRICOT	PWSR048.APRICOT	1/2 yard (0.46m)
<b>(C) Glimmer</b>	BUTTERSCOTCH	PWSR049.BUTTERSCOTCH	1/3 yard (0.30m)
<b>(D) Terrain</b>	FOSSIL	PWSR050.FOSSIL	1 1/2 yards (1.37m)
<b>(E) Topography</b>	AZURE	PWSR051.AZURE*	7/8 yard (0.80m)
<b>(F) Watercolor Meadow</b>	CELADON	PWSR053.CELADON	1/3 yard (0.30m)
<b>(G) Marble</b>	OCEAN	PWSR054.OCEAN	1/2 yard (0.46m)
<b>(H) Petals</b>	FOG	PWSR055.FOG	1/2 yard (0.46m)
<b>(I) Parquet</b>	APRICOT	PWSR057.APRICOT	1/2 yard (0.46m)

\* includes binding

## Backing (Purchased Separately)

**44" (1.12m) wide**

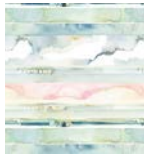
Look Deeper

**OR**

**108" (2.74m) wide**

Sandstone

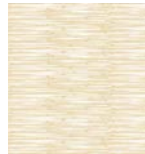
Blush	PWSR045.BLUSH	4 yards (3.66m)
Apricot	QBSR001.APRICOT	2 yards (1.83m)



(A)



(B)



(C)



(D)



(E)



(F)



(G)



(H)



(I)



Backing  
44"



Backing  
108"