

The Parlor Azure L'Oiseau

Featuring New Vintage by Kathy Doughty

The old and new combine in this stunning quilt featuring the beautiful prints of New Vintage by Kathy Doughty.

Collection:	New Vintage by Kathy Doughty
Technique:	Piecing, Quilting
Skill Level:	Experienced Beginner
Finished Size:	Finished Size: 84" x 88" (213.36cm x 223.52cm)
	Finished Block Size: 12" (30.48cm) square

All possible care has been taken to assure the accuracy of this pattern. We are not responsible for printing errors or the manner in which individual work varies. Please read the instructions carefully before starting this project. If kitting it is recommended a sample is made to confirm accuracy.

Project designed by Kathy Doughty
Tech edited by Linda Turner Griepentrog

Fabric Requirements

DESIGN	COLOR	ARTICLE CODE	YARDAGE
(A) L'Oiseau	Azure	PWMO038.AZURE	2½ yards (2.29m)
(B) Plaid	Chartreuse	PWMO039.CHARTREUSE	1¾ yards (1.26m)
(C) Charmed	Jade	PWMO040.JADE	⅓ yard (0.30m)
(D) Charmed	Lilac	PWMO040.LILAC	⅓ yard (0.30m)
(E) Vintage Rose	Macaron	PWMO041.MACARON	4⅛ yards (3.77m)
(F) Mini Charm	Chantilly	PWMO042.CHANTILLY	¼ yard (0.23m)
(G) Mini Charm	Ganache	PWMO042.GANACHE	¼ yard (0.23m)
(H) Tangled	Caramel	PWMO043.CARAMEL	⅜ yard (0.34m)
(I) Tangled	Tangerine	PWMO043.TANGERINE	⅜ yard (0.34m)
(J) Passion Vine	Natural	PWMO044.NATURAL	⅜ yard (0.34m)
(K) Passion Vine	Caribbean	PWMO044.CARIBBEAN	⅜ yard (0.34m)
(L) Tapestry Stripe	Fete	PWMO045.FETE	¼ yard (0.23m)
(M) Tapestry Stripe	Gala	PWMO045.GALA*	1¾ yards (1.26m)

* includes binding

Backing (Purchased Separately)

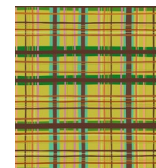
44" (111.76cm) wide			
Plaid	Tiffany	PWMO039.TIFFANY	7⅔ yards (7.01m)
OR			
108" (274.32cm) wide			2⅝ yards (2.40m)

Additional Requirements

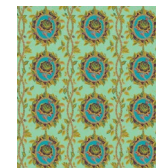
- 100% cotton thread in colors to match
- 92" x 96" (233.68cm x 243.84cm) batting



(A)



(B)



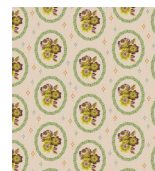
(C)



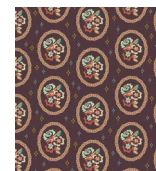
(D)



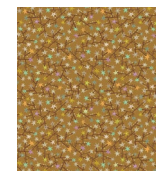
(E)



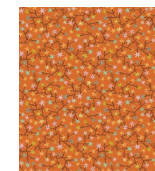
(F)



(G)



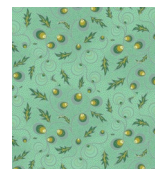
(H)



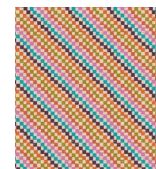
(I)



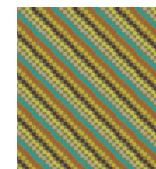
(J)



(K)



(L)



(M)



Backing
44"
(111.76cm)

Cutting

WOF = Width of Fabric

LOF = Length of Fabric

Follow the quilt image for design placement on fussy-cut pieces.

Fabric A, fussy-cut:

(3) 10½" x 68½" (26.67cm x 173.99cm) LOF strips, focusing on the birds

Fabric B, cut:

(2) 18¼" x WOF (46.36cm x WOF); sub-cut
(3) 18¼" (46.36cm) squares, cut twice diagonally to make (12) setting triangles
(1) 9¾" x WOF (23.81cm x WOF); sub-cut
(4) 9¾" (23.81cm) squares, cut once diagonally to make (8) corner triangles

Fabrics C and D, fussy-cut from each:

(4) 4¾" (12.07cm) squares, centered over the floral cameos

Fabric E, fussy-cut:

(2) 10½" x 68½" (26.67cm x 173.99cm) LOF side borders, centering over the floral stripe
(2) 10½" x 64½" (26.67cm x 163.83cm) LOF top/bottom borders, centering over the floral stripe

Fabrics F and G, cut from each:

(2) 3½" x WOF (8.89cm x WOF); sub-cut
(16) 3½" (8.89cm) squares

Fabrics H and I, cut from each:

(3) 3½" x WOF (8.89cm x WOF); sub-cut
(32) 3½" (8.89cm) squares

Fabrics J and K, cut from each:

(3) 3½" x WOF (8.89cm x WOF); sub-cut
(16) 3½" x 6½" (8.89cm x 16.51cm) rectangles

Fabric L, cut:

(1) 4" x WOF (10.16cm x WOF); sub-cut
(8) 4" (10.16cm) squares, cut once diagonally to make (16) half-square triangles (HST)

Fabric M, cut:

(2) 10½" x WOF (26.67cm x WOF); sub-cut
(4) 10½" (26.67cm) squares and
(8) 4" (10.16cm) squares; cut the 4" (10.16cm) squares once diagonally to make (16) HST
(9) 2½" x WOF (6.35cm x WOF) for binding

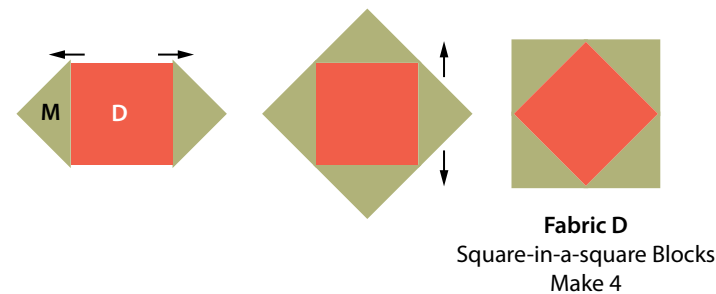
Instructions

All seam allowances are ¼" (.64cm) and pieces are sewn right sides together.

Block Centers

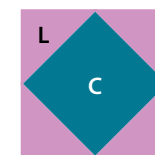
1. Sew a **Fabric M** HST to each side of a 4¾" (12.07cm) **Fabric D** square, centering the triangles on the square. Press the seam allowances toward the triangles. Sew a **Fabric M** HST to the top and another to the bottom of the **Fabric D** square. (**Fig. 1**) Trim to 6½" (16.51cm) square, leaving a ¼" (.64cm) seam allowance from the center square points. Repeat to make a total of (4) **Fabric D** Square-in-a-square Blocks.

Fig. 1



2. Repeat Step 1 using **Fabric L** HST and 4¾" (12.07cm) **Fabric C** squares to make a total of (4) **Fabric C** Square-in-a-square Blocks. (**Fig. 2**)

Fig. 2



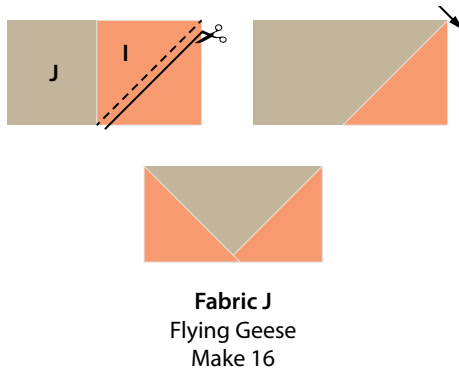
Fabric C
Square-in-a-square Blocks
Make 4

Flying Geese

3. Draw a line along one diagonal on the wrong side of the 3½" (8.89cm) **Fabric H** and **I** squares.
4. Place (1) 3½" (8.89cm) **Fabric I** square on the right end of (1) 3½" x 6½" (8.89cm x 16.51cm) **Fabric J** rectangle, right sides together, with the drawn line

across the corner and the edges matching. Sew on the drawn line. Trim the seam allowance below the stitching to $\frac{1}{4}$ " (.64cm) and press the **Fabric I** triangle away from the **Fabric J** base. Repeat to add a second **Fabric I** square to the left end of the **Fabric J** rectangle. (**Fig. 3**) Repeat to make a total of (16) $3\frac{1}{2}$ " x $6\frac{1}{2}$ " (8.89cm x 16.51cm) **Fabric J** Flying Geese.

Fig. 3



5. Repeat Step 4 using the $3\frac{1}{2}$ " (8.89cm) **Fabric H** squares and $3\frac{1}{2}$ " x $6\frac{1}{2}$ " (8.89cm x 16.51cm) **Fabric K** rectangles to make a total of (16) **Fabric K** Flying Geese. (**Fig. 4**)

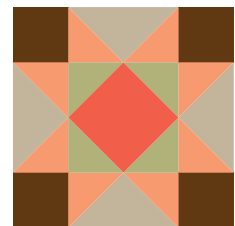
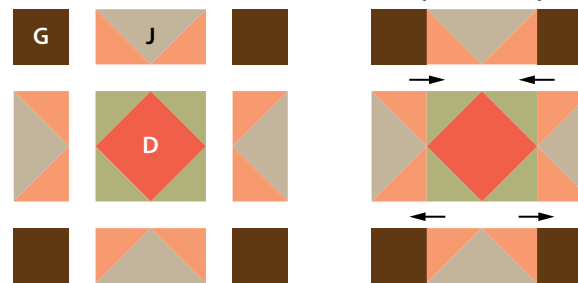
Fig. 4



Blocks

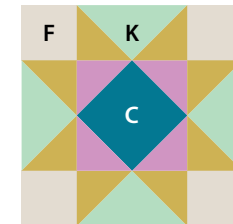
6. Lay out (1) **Fabric D** Square-in-a-square Block, (4) **Fabric J** Flying Geese, and (4) $3\frac{1}{2}$ " (8.89cm) **Fabric G** squares into (3) rows. (**Fig. 5**) Sew the units together in each row. Press the seams in alternate directions for adjacent rows. Sew the rows together to complete a $12\frac{1}{2}$ " (31.75cm) square Block 1. Repeat to make a total of (4) Block 1.

Fig. 5



7. Repeat Step 6 using the **Fabric C** Square-in-a-square Blocks, **Fabric K** Flying Geese and $3\frac{1}{2}$ " (8.89cm) **Fabric F** squares to make a total of (4) Block 2. (**Fig. 6**)

Fig. 6



Block 2
Make 4

Quilt Top Assembly

Note: Follow the **Quilt Layout** diagram on page 6 while assembling the quilt. Pay attention to the direction of one-way prints.

8. Lay out (2) Block 1, (2) Block 2, (6) **Fabric B** setting triangles and (4) **Fabric B** corner triangles into a column. Sew the setting and corner triangles to the blocks in diagonal rows, pressing the seam allowances toward the triangles. Sew the rows together and add the remaining (2) corner triangles to complete a 17½" x 68½" (44.45cm x 173.99cm) Pieced Column. Repeat to make (2) pieced columns, noting the opposite block placement.
9. Noting the orientation of the birds, alternately sew the Pieced Columns between the (3) **Fabric A** panels to complete the quilt center. Press the seam allowances toward the **Fabric A** panels.
10. Sew a 10½" (26.67cm) **Fabric M** square to each end of the (2) 10½" x 64½" (26.67cm x 163.83cm) **Fabric E** top/bottom borders. Press the seam allowances toward the borders.
11. Sew a 10½" x 68½" (26.67cm x 173.99cm) **Fabric E** side border to each side of the quilt center. Sew a pieced top/bottom border to the top and the other to the bottom to complete the quilt top.

Finishing

12. Sew together the 2½" (6.35cm) **Fabric M** binding strips end to end using diagonal seams. Press seams open. Press the binding strip in half wrong sides together.
13. Layer backing (wrong side up), batting, and quilt top (right side up). Baste the layers together and quilt as desired. Trim excess batting and backing even with the top after quilting is completed.
14. Leaving an 8" (20.32cm) tail of binding, sew the binding to the top of the quilt through all layers matching all raw edges. Miter corners. Stop approximately 12" (30.48cm) from where you started. Lay both loose ends of binding flat along quilt edge. Where the loose ends meet, fold them back on themselves and press to form a crease. Using this crease as your stitching line, sew the two open ends of the binding right sides together. Trim seam to ¼" (.64cm) and press open. Finish sewing binding to quilt.
15. Turn the binding to the back of quilt and hand-stitch in place.

Quilt Layout

