

Featuring Vivacious Cotton Lawn by Anna Maria Horner

The Zoe Quilt

Finished Size: 79" x 90" (2.01m x 2.23m)

Project designed by Erica Jackman - Kitchen Table Quilting

Purchase pattern at kitchentablequilting.com

Technique: Pieced | Skill Level: Advanced Beginner

Fabric Requirements

Note: The Cotton Lawn collection is 54" wide; all yardage calculations for **A - L** are assuming a minimum usable width of fabric of 52". **Fabric M** is based on usable width of fabric of 43".

DESIGN	COLOR	ITEM ID	YARDAGE
(A) Tapestry	Lilac	CLAH001.LILAC	½ yard (0.46m)
(B) Tapestry	Meadow	CLAH001.MEADOW	⅓ yard (0.30m)
(C) Buttoned Up	Candy	CLAH002.CANDY	⅓ yard (0.30m)
(D) Buttoned Up	Fresh	CLAH002.FRESH	⅓ yard (0.30m)
(E) Natural Order	Magenta	CLAH003.MAGENTA	⅝ yard (0.57m)
(F) Natural Order	Pine	CLAH003.PINE	⅓ yard (0.30m)
(G) Fan Club	Caramel	CLAH004.CARAMEL	⅓ yard (0.30m)
(H) Fan Club	Plum	CLAH004.PLUM	½ yard (0.46m)
(I) Show Off	Melon	CLAH005.MELON*	1¼ yards (1.14m)
(J) Show Off	Periwinkle	CLAH005.PERIWINKLE	⅝ yard (0.57m)
(K) Spotted	Purr	CLAH006.PURR	⅓ yard (0.30m)
(L) Spotted	Roar	CLAH006.ROAR	⅓ yard (0.30m)
(M) Shot Cottons	Airforce	SCGP104.AIRFORCE	2¼ yards (2.06m)

* includes binding

Backing (Purchased Separately)

54" (1.37m) wide

Tapestry

OR

108" (2.74m) wide

Spotted

Lilac

CLAH001.LILAC

5¼ yards (4.80m)

Blush

QBAH006.BLUSH

2¾ yards (2.51m)



(A)



(B)



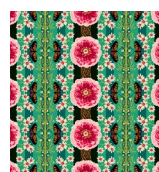
(C)



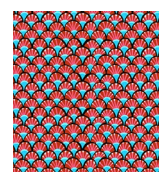
(D)



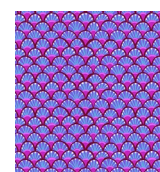
(E)



(F)



(G)



(H)



(I)



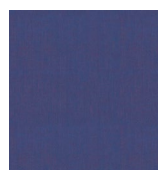
(J)



(K)



(L)



(M)



Backing
54"



Backing
108"

If kitting, refer to the final pattern for yardage amounts, it is recommended that a sample is made to confirm accuracy.