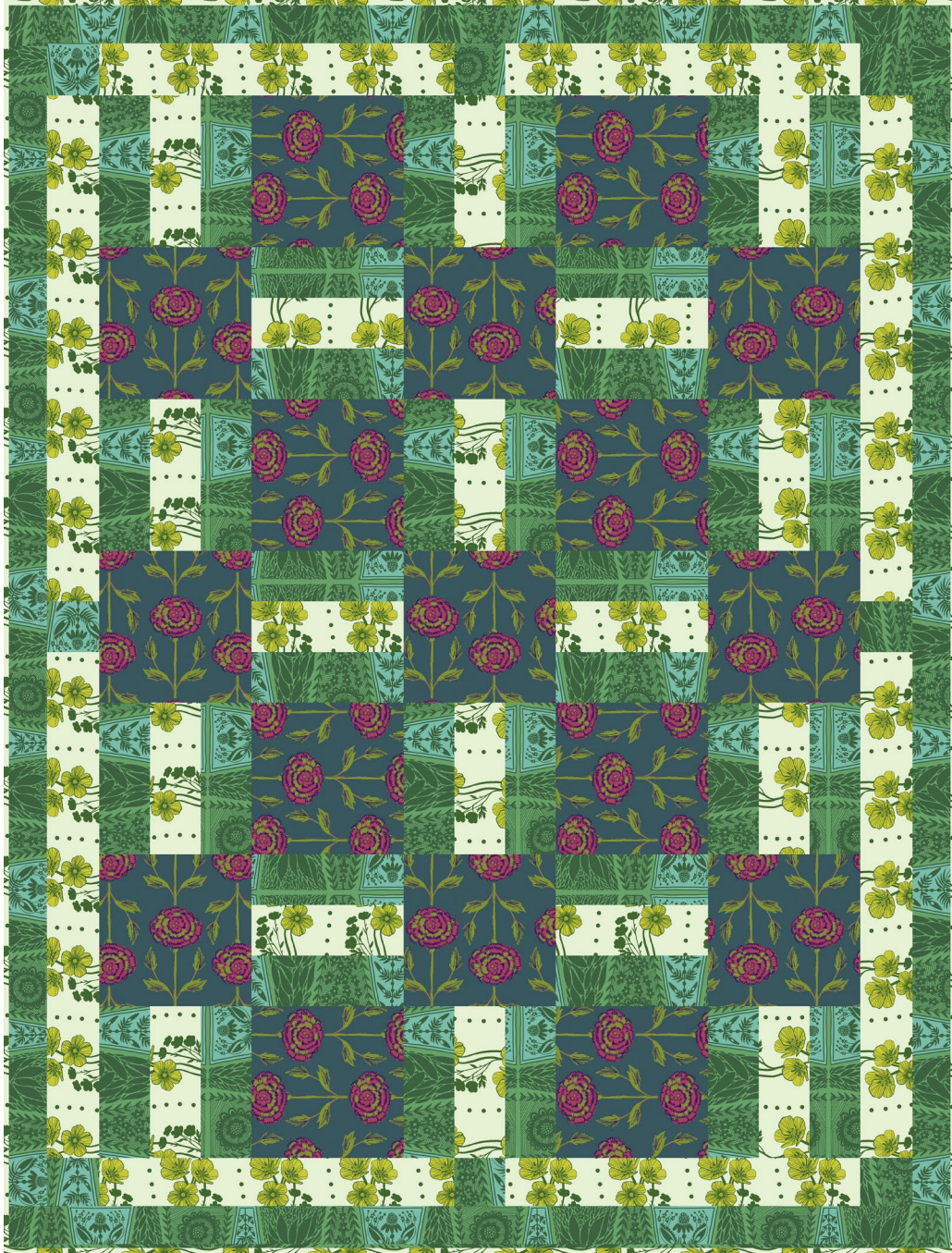


*Free Spirit* 



Featuring Triple Take by Anna Maria & Flower Market by Courtney Cerutti

## Porch Rails Triple Take Quilt

Finished Size: 45½" x 60" (1.16m x 1.52m)

*Project designed by Donna Robertson*

*Purchase pattern at [fabriccafe.com](http://fabriccafe.com)*

Technique: Pieced

[freespiritfabrics.com](http://freespiritfabrics.com)



# Porch Rails Triple Take Quilt

## Fabric Requirements

### DESIGN

**(A) Dresden Lace**

**(B) Buttercups**

**(C) Carnations**

*\* includes binding*

### COLOR

Grass

Lime

Garden

### ITEM ID

PWAM019.GRASS

PWAM020.LIME\*

PWCC008.GARDEN

### YARDAGE

1 yard (0.91m)

1 yard (0.91m)

1 yard (0.91m)

## Backing (Purchased Separately)

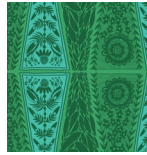
**44" (111.76cm) wide**

New Propagate

Mystery

PWAM017.MYSTERY

3 yards (2.74m)



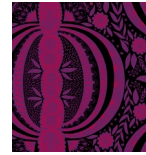
(A)



(B)



(C)



**Backing  
44"  
(111.76cm)**