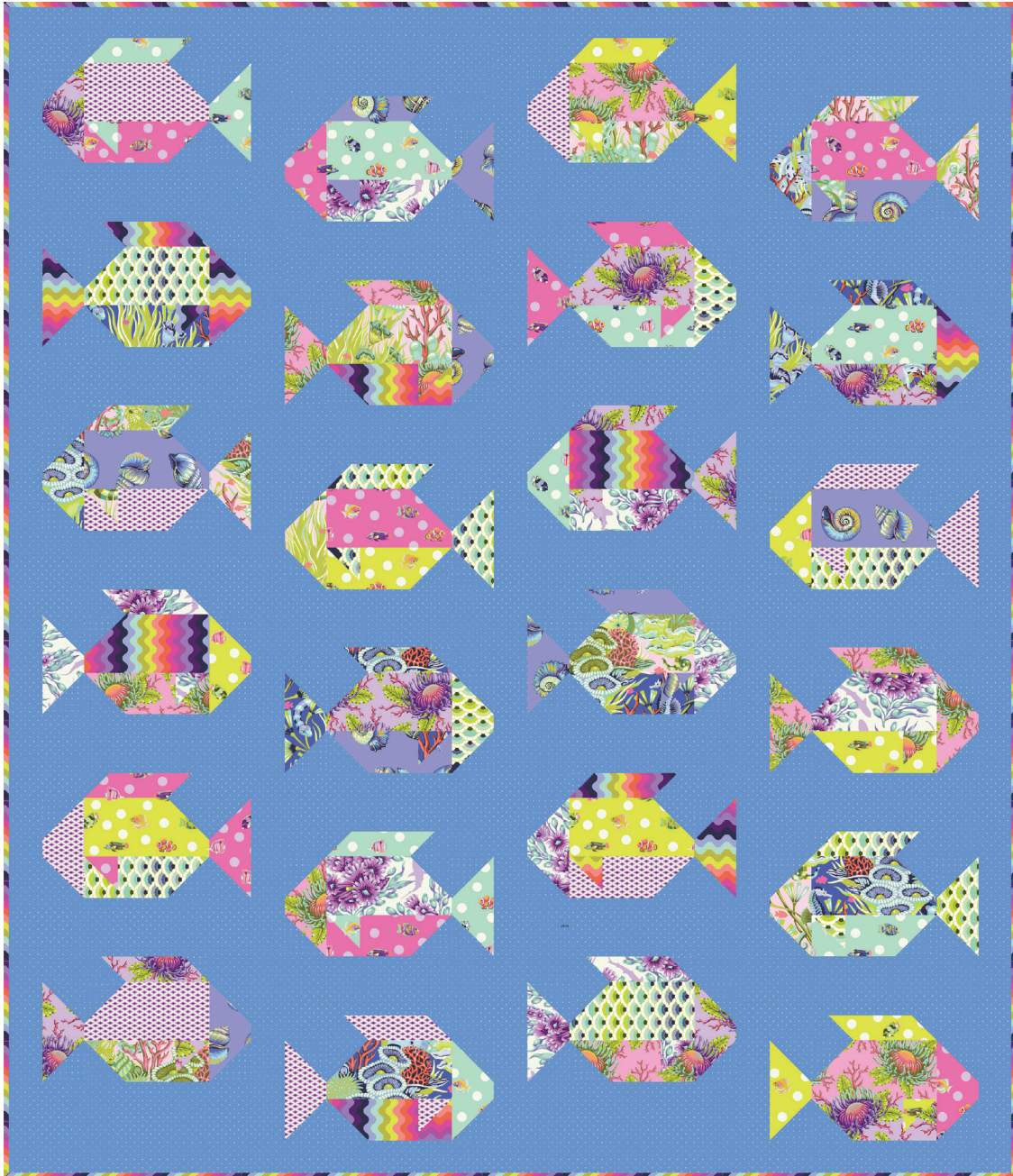


*FreeSpirit* 



Featuring Floral Reef by Tula Pink

# Fish Quilt

Finished Size: 60" x 70" (1.52m x 1.78m)

*Project designed by Cluck Cluck Sew - Re-Colored by FreeSpirit Fabrics*

*Purchase pattern at [cluckclucksew.com](http://cluckclucksew.com)*

Technique: Pieced | Skill Level: Advanced Beginner

[freespiritfabrics.com](http://freespiritfabrics.com)

## Fabric Requirements

DESIGN	COLOR	ITEM ID	YARDAGE
(A) Reef What You Sew	Marine	PWTP264.MARINE	FQ (45.72cm x 53.34cm)
(B) Reef What You Sew	Coralline	PWTP264.CORALLINE	FQ (45.72cm x 53.34cm)
(C) Friends & Anemones	Coralline	PWTP265.CORALLINE	FQ (45.72cm x 53.34cm)
(D) Friends & Anemones	Ultraviolet	PWTP265.ULTRAVIOLET	FQ (45.72cm x 53.34cm)
(E) Lil Shelly	Marine	PWTP266.MARINE	FQ (45.72cm x 53.34cm)
(F) Shadow Sharks	Ultraviolet	PWTP267.ULTRAVIOLET	FQ (45.72cm x 53.34cm)
(G) School Crossing	Seafoam	PWTP268.SEAFOAM	FQ (45.72cm x 53.34cm)
(H) School Crossing	Seagrass	PWTP268.SEAGRASS	FQ (45.72cm x 53.34cm)
(I) School Crossing	Delphine	PWTP268.DELPHINE	FQ (45.72cm x 53.34cm)
(J) Aquatic Lace	Marine	PWTP269.MARINE	FQ (45.72cm x 53.34cm)
(K) Wave Rider	DeepDive	PWTP272.DEEPDUVE*	1 yard (0.91m)
(L) Lighthouse Windows	Ultraviolet	PWTP273.ULTRAVIOLET	FQ (45.72cm x 53.34cm)
(M) Tiny Dots	Bluebell	PWTP185.BLUEBELL	3¾ yards (3.09m)

\* includes binding

## Backing (Purchased Separately)

**44" (1.12m) wide**

Reef What You Sew

Marine

PWTP264.MARINE

4 yards (3.66m)

**OR**

**108" (2.74m) wide**

Big Shelly

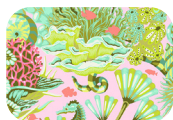
Ultraviolet

QBTP021.ULTRAVIOLET

2 yards (1.83m)



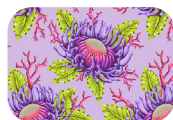
(A)



(B)



(C)



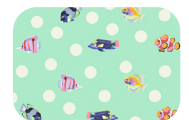
(D)



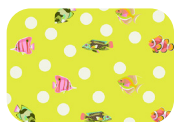
(E)



(F)



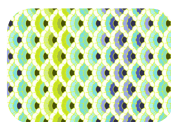
(G)



(H)



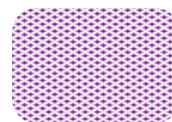
(I)



(J)



(K)



(L)



(M)



Backing  
44"



Backing  
108"

*If kitting, refer to the final pattern for yardage amounts, it is recommended that a sample is made to confirm accuracy.*