

Free Spirit



Featuring Floral Reef by Tula Pink

High Tide Quilt

Finished Size: 42" x 46" (1.07m x 1.17m)

Project designed by Slice of Pi Quilts

Purchase pattern at sliceofpiquilts.etsy.com

Technique: Quilt-as-you-go, bias tape applique | Skill Level: Advanced Beginner

Fabric Requirements

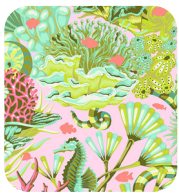
DESIGN	COLOR	ITEM ID	YARDAGE
(A) Reef What You Sew	Coralline	PWTP264.CORALLINE	1/6 yards (0.15m)
(B) Reef What You Sew	Ultraviolet	PWTP264.ULTRAVIOLET	1/6 yards (0.15m)
(C) Friends & Anemones	Coralline	PWTP265.CORALLINE	1/6 yards (0.15m)
(D) Friends & Anemones	Ultraviolet	PWTP265.ULTRAVIOLET	1/6 yards (0.15m)
(E) Lil Shelly	Marine	PWTP266.MARINE	1/6 yards (0.15m)
(F) Lil Shelly	Ultraviolet	PWTP266.ULTRAVIOLET	1/6 yards (0.15m)
(G) Shadow Sharks	Delphine	PWTP267.DELPHINE	1/6 yards (0.15m)
(H) Shadow Sharks	Ultraviolet	PWTP267.ULTRAVIOLET	1/6 yards (0.15m)
(I) School Crossing	Delphine	PWTP268.DELPHINE	1/6 yards (0.15m)
(J) Aquatic Lace	Ultraviolet	PWTP269.ULTRAVIOLET	1/6 yards (0.15m)
(K) Lighthouse Windows	Delphine	PWTP273.DELPHINE	1/6 yards (0.15m)
(L) Lighthouse Windows	Ultraviolet	PWTP273.ULTRAVIOLET	1/6 yards (0.15m)
(M) Mineral	Opal	PWTP148.OPAL*	2 yards (1.83m)

* includes binding

Backing (Purchased Separately)

44" (1.12m) wide

Riptide DeepDive PWTP270.DEEPDIIVE 1 1/2 yard (1.37m)



(A)



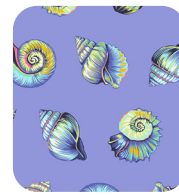
(B)



(C)



(D)



(E)



(F)



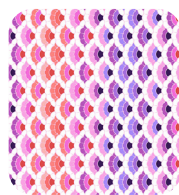
(G)



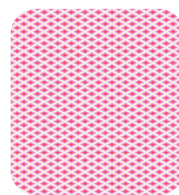
(H)



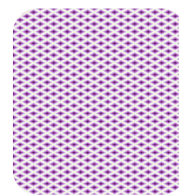
(I)



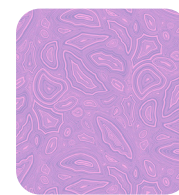
(J)



(K)



(L)



(M)



Backing
44"

If kitting, refer to the final pattern for yardage amounts, it is recommended that a sample is made to confirm accuracy.