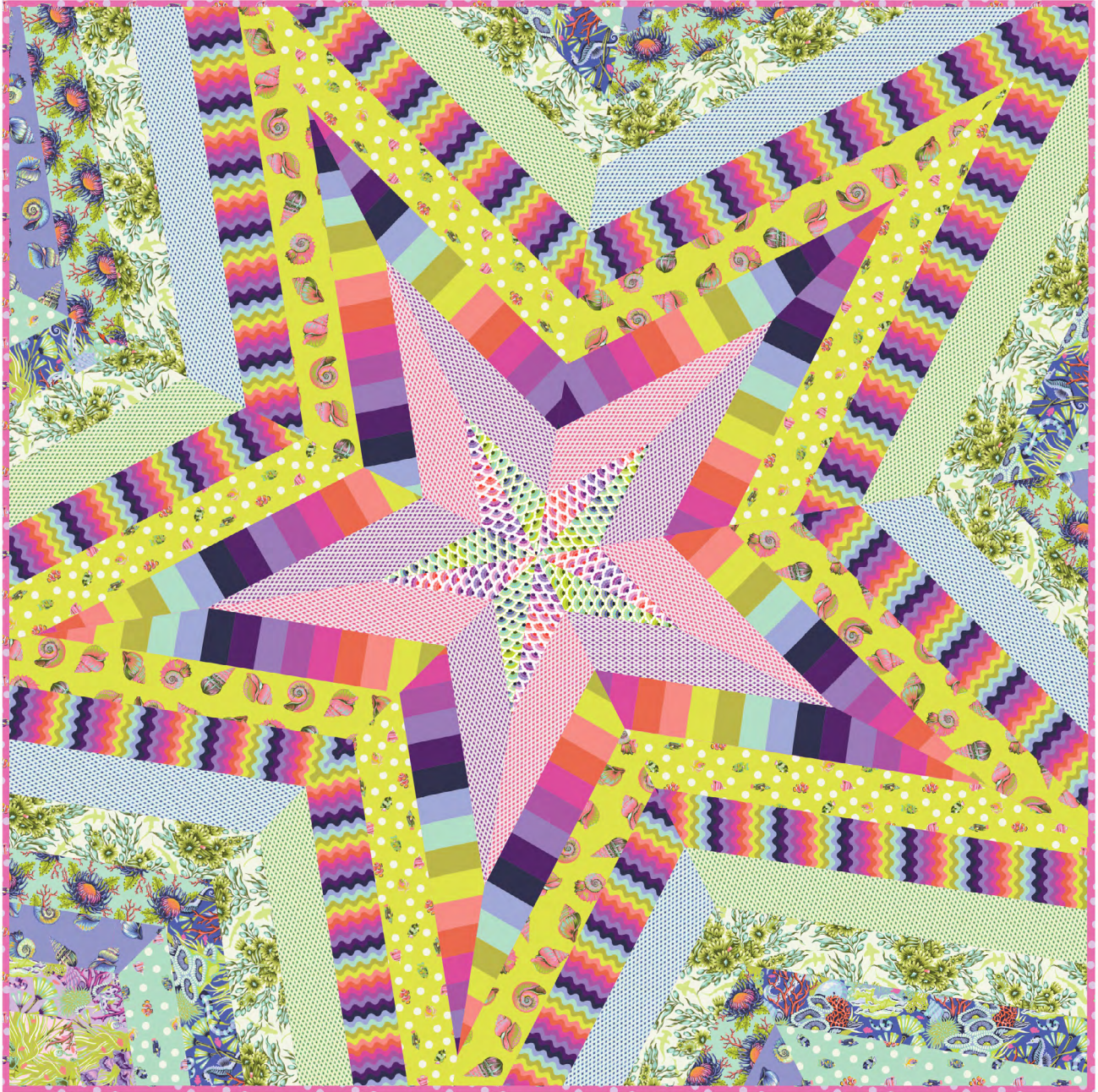


*FreeSpirit*



Featuring Floral Reef by Tula Pink

## Star Storm Quilt

Finished Size: 80" x 80" (2.03m x 2.03m)

Project designed by Victoria Findlay Wolfe - Recolored by FreeSpirit Fabrics

Purchase pattern at [vfwquilts.com](http://vfwquilts.com)

Technique: Pieced | Skill Level: Advanced Beginner

[freespiritfabrics.com](http://freespiritfabrics.com)

## Fabric Requirements

DESIGN	COLOR	ITEM ID	YARDAGE
(A) Reef What You Sew (round G)	Marine	PWTP264.MARINE	½ yards (0.46m)
(B) Reef What You Sew (round J)	Coralline	PWTP264.CORALLINE	¼ yards (0.23m)
(C) Reef What You Sew (round I)	Ultraviolet	PWTP264.ULTRAVIOLET	¼ yards (0.23m)
(D) Friends & Anemones (round G)	Seafoam	PWTP265.SEAFOAM	½ yards (0.46m)
(E) Lil Shelly (round H)	Marine	PWTP266.MARINE	½ yards (0.46m)
(F) Lil Shelly (round C)	Seagrass	PWTP266.SEAGRASS	¾ yards (0.69m)
(G) Shadow Sharks (round F)	Seagrass	PWTP267.SEAGRASS	1 yard (0.91m)
(H) School Crossing (round H)	Seafoam	PWTP268.SEAFOAM	½ yards (0.46m)
(I) School Crossing (round C)	Seagrass	PWTP268.SEAGRASS	¾ yards (0.69m)
(J) School Crossing (binding)*	Delphine	PWTP268.DELPHINE*	¾ yards (0.69m)
(K) Aquatic Lace (inner star)	Marine	PWTP269.MARINE	¼ yards (0.23m)
(L) Aquatic Lace (inner star)	Ultraviolet	PWTP269.ULTRAVIOLET	¼ yards (0.23m)
(M) Smooth Sailing (round B)	DeepDive	PWTP271.DEEP DIVE	1⅜ yard (1.26m)
(N) Wave Rider (round D)	DeepDive	PWTP272.DEEP DIVE	1½ yard (1.37m)
(O) Lighthouse Windows (round E)	Marine	PWTP273.MARINE	¾ yards (0.69m)
(P) Lighthouse Windows (round E)	Seagrass	PWTP273.SEAGRASS	¾ yards (0.69m)
(Q) Lighthouse Windows (round A)	Delphine	PWTP273.DELPHINE	¾ yards (0.69m)
(R) Lighthouse Windows (round A)	Ultraviolet	PWTP273.ULTRAVIOLET	¾ yards (0.69m)

\* includes binding

## Backing (Purchased Separately)

### 44" (1.12m) wide

Shadow Sharks	Seagrass	PWTP267.SEAGRASS	7½ yards (6.86m)
---------------	----------	------------------	------------------

**OR**

### 108" (2.74m) wide

Big Shelly	Marine	QBTP021.MARINE	2⅝ yards (2.40m)
------------	--------	----------------	------------------

Fabric Swatches on next page...

*If kitting, refer to the final pattern for yardage amounts, it is recommended that a sample is made to confirm accuracy.*

## Fabric Swatches



(A)



(B)



(C)



(D)



(E)



(F)



(G)



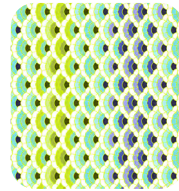
(H)



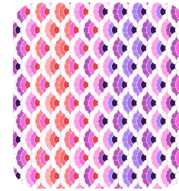
(I)



(J)



(K)



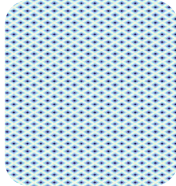
(L)



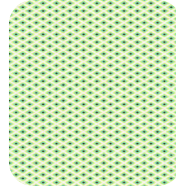
(M)



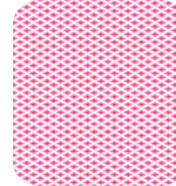
(N)



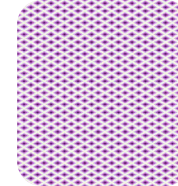
(O)



(P)



(Q)



(R)



Backing  
44"



Backing  
108"