



Featuring Counter by e bond

Counter Balance Quilt

Finished Size: $84\frac{1}{2}'' \times 84\frac{1}{2}''$ (2.14m x 2.14m)

Project designed by Antonie Alexander - The Red Boot Quilt Company

Purchase pattern at redbootquilts.com

Technique: Pieced | Skill Level: Advanced Beginner



Counter Balance Quilt

Fabric Requirements

DESIGN	COLOR	ITEM ID	YARDAGE
(A) Haven	Ember	PWEB064.EMBER	¼ yards (0.23m)
(B) Ambient	Stephaniec	PWEB065.STEPHANIE	⅜ yards (0.34m)
(C) Nest	Kara	PWEB066.KARA	¼ yards (0.23m)
(D) Orbit	Faith	PWEB067.FAITH	⅜ yards (0.34m)
(E) Infinite	Isabella	PWEB068.ISABELLA	2 yards (1.83m)
(F) Counter	Julie	PWEB069.JULIE	⅜ yards (0.34m)
(G) Ethereal	Erin	PWEB070.ERIN	¼ yards (0.23m)
(H) Quiet	Lilliemae	PWEB071.LILLIEMAE	⅜ yards (0.34m)
(I) Expansive	Elle	PWEB072.ELLE	¾ yards (0.69m)
(J) Field	Meca	PWEB073.MECA*	1⅛ yard (1.03m)
(K) Boundless	Jia	PWEB074.JIA	¼ yards (0.23m)
(L) Open	Kate	PWEB075.KATE	¾ yards (0.69m)
(M) Wilderness	Hannahpearl	PWEB076.HANNAHPEARL	1 yard (0.91m)
(N) Area	Patty	PWEB077.PATTY	1½ yard (1.37m)
(O) Margin	Nandi	PWEB078.NANDI	½ yards (0.46m)
(P) Volume	Jenny	PWEB079.JENNY	⅜ yards (0.34m)
(Q) Designer Essential Solid	Parrot Blue	CSFSESS.PARBL	⅜ yards (0.34m)
(R) Designer Essential Solid	Aegean	CSFSESS.AEGEA	¼ yards (0.23m)
(S) Designer Essential Solid	Winter White	CSFSESS.WINTE	½ yards (0.46m)
(T) Designer Essential Solid	Stargazer	CSFSESS.STARGAZER	¼ yards (0.23m)

* includes binding

Backing (Purchased Separately)

44" (1.12m) wide

Open	Kate	PWEB075.KATE	5¼ yards (4.80m)
------	------	--------------	------------------

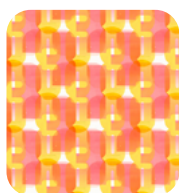
Fabric Swatches on next page...

*If kitting, refer to the final pattern for yardage amounts,
it is recommended that a sample is made to confirm accuracy.*

Fabric Swatches



(A)



(B)



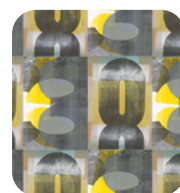
(C)



(D)



(E)



(F)



(G)



(H)



(I)



(J)



(K)



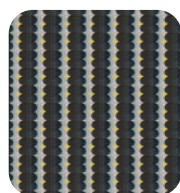
(L)



(M)



(N)



(O)



(P)



(Q)



(R)

(S)



(T)



Backing
44"