

Featuring Counter by e bond

# Crossroads Quilt

Finished Size: 60" x 75" (1.52m x 1.90m)

Project designed by Villa Rosa-Colored by FreeSpirit Fabrics

Purchase pattern at [villarosadesigns.com](http://villarosadesigns.com)

Technique: Pieced | Skill Level: Advanced Beginner

[freespiritfabrics.com](http://freespiritfabrics.com)



# Crossroads Quilt

## Fabric Requirements

DESIGN	COLOR	ITEM ID	YARDAGE
(A) Haven	Ember	PWEB064.EMBER	FQ (45.72cm x 53.34cm)
(B) Ambient	Stephaniec	PWEB065.STEPHANIE	FQ (45.72cm x 53.34cm)
(C) Orbit	Faith	PWEB067.FAITH	FQ (45.72cm x 53.34cm)
(D) Infinite	Isabella	PWEB068.ISABELLA	FQ (45.72cm x 53.34cm)
(E) Counter	Julie	PWEB069.JULIE	FQ (45.72cm x 53.34cm)
(F) Ethereal	Erin	PWEB070.ERIN	FQ (45.72cm x 53.34cm)
(G) Quiet	Lilliemae	PWEB071.LILLIEMAE	FQ (45.72cm x 53.34cm)
(H) Expansive	Elle	PWEB072.ELLE	FQ (45.72cm x 53.34cm)
(I) Field	Meca	PWEB073.MECA	FQ (45.72cm x 53.34cm)
(J) Boundless	Jia	PWEB074.JIA	FQ (45.72cm x 53.34cm)
(K) Open	Kate	PWEB075.KATE	FQ (45.72cm x 53.34cm)
(L) Wilderness	Hannahpearl	PWEB076.HANNAHPEARL	2 yards (1.83m)
(M) Area	Patty	PWEB077.PATTY	FQ (45.72cm x 53.34cm)
(N) Margin	Nandi	PWEB078.NANDI	FQ (45.72cm x 53.34cm)
(O) Volume	Jenny	PWEB079.JENNY	FQ (45.72cm x 53.34cm)
(P) Wilderness	Hannahpearl	PWEB076.HANNAHPEARL*	5/8 yards (0.57m)

\* includes binding

## Backing (Purchased Separately)

### 44" (1.12m) wide

Nest	Kara	PWEB066.KARA	4 yards (3.66m)
------	------	--------------	-----------------

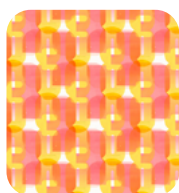
Fabric Swatches on next page...

*If kitting, refer to the final pattern for yardage amounts,  
it is recommended that a sample is made to confirm accuracy.*

## Fabric Swatches



(A)



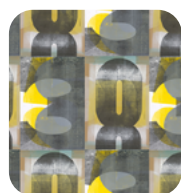
(B)



(C)



(D)



(E)



(F)



(G)



(H)



(I)



(J)



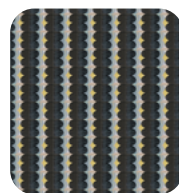
(K)



(L)



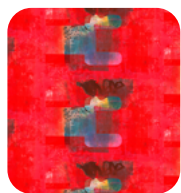
(M)



(N)



(O)



(P)



Backing  
44"