



Tim Holtz
**ECLECTIC
 ELEMENTS**

Let It Snow

Featuring Merriment by Tim Holtz

Tim's unique vintage style lends a soft touch to this whimsical, simple quilt design that is sure to bring joy to your holidays. Easy piecing and fast fusible appliqué make construction a breeze.

Collection:	Merriment by Tim Holtz
Technique:	Piecing, Appliqué
Skill Level:	Confident Beginner
Crafting Time:	Longer Term*
Finished Size:	Finished Size: 82" x 92" (208.28cm x 233.68cm)
	Finished Block Size: 10" x 10" (25.40cm x 25.40cm)

*Crafting time based on Confident Beginner skill level

Let It Snow

Project designed by Cathy Smith – A Quilting Chick

Tech edited by Kathryn Patterson

Fabric Requirements

DESIGN	COLOR	ARTICLE CODE	YARDAGE
(A) Pinstripe	Red	PWTH077.8REDX	2 yards (182.88cm)*
(B) Berries	Multi	PWTH081.8MULT	1¾ yards (125.73cm)
(C) Foulard	Multi	PWTH082.8MULT	1¾ yards (125.73cm)
(D) List	Neutral	PWTH084.8NEUT	1¾ yards (125.73cm)
(E) Type	Neutral	PWTH085.8NEUT	1¾ yards (125.73cm)
(F) Dot	Red	PWTH087.8REDX	1½ yards (137.16cm)
(G) Xmas Stripe	Multi	PWTH086.8MULT	1½ yards (102.87cm)
(H) Dot	Green	PWTH087.8GREE	1½ yards (148.59cm)
(I) Leaf Medallion	Green	PWTH083.8GREE	⅝ yard (57.15cm)

* includes binding

Backing (Purchased Separately)

44" (111.76cm) Wide

Leaf Medallion Green PWTH083.8GREE

OR

108" (274.32cm) Wide

7¾ yards (7.09m)

2½ yards (2.40m)



(A)



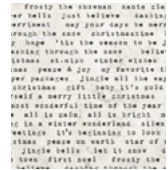
(B)



(C)



(D)



(E)



(F)



(G)



(H)



(I)



**Backing
44"
(111.76cm)**

Additional Requirements

- 100% cotton thread in colors to match
- 7¼ yards (6.63m) lightweight fusible webbing, 17" (43.18cm) wide
- 90" x 100" (228.60cm x 254cm) batting
- Sewing Machine
- Rotary cutter/mat/ruler
- Basic sewing and pressing supplies

Let It Snow

Preparation

Print the snowflake template in 3 sizes:

- Enlarge by 150% for 9" (22.86cm) snowflake
- Enlarge by 300% for 18" (45.72cm) snowflake
- Enlarge by 600% for 36" (91.44cm) snowflake

Trace (8) 9" (22.86cm), (4) 18" (45.72cm), and (1) 36" (91.44cm) snowflakes onto the paper side of the fusible webbing, leaving approximately 1" (2.54cm) between the snowflakes. Rough-cut each snowflake, outside the traced line. Place rough-cut shapes on the wrong side of indicated fabrics and fuse. Cut snowflakes out on the traced lines.

Cutting

WOF = Width of Fabric

Fabric A, cut:

- (9) 2½" x WOF (6.35cm x WOF) strips for binding
- (18) 2½" x WOF (6.35cm x WOF) strips for block piecing

Fabrics B, C, D, and E, cut from each:

- (18) 2½" x WOF (6.35cm x WOF) strips for block piecing

Fabric F, cut:

- (8) 2½" x WOF (6.35cm x WOF) strips for inner border
- (2) 18" (45.72cm) snowflakes
- (2) 9" (22.86cm) snowflakes

Fabric G, cut:

- (8) 4½" x WOF (11.43cm x WOF) strips for outer border

Fabric H, cut:

- (1) 36" (91.44cm) snowflake
- (1) 18" (45.72cm) snowflake
- (4) 9" (22.86cm) snowflakes

Fabric I, cut:

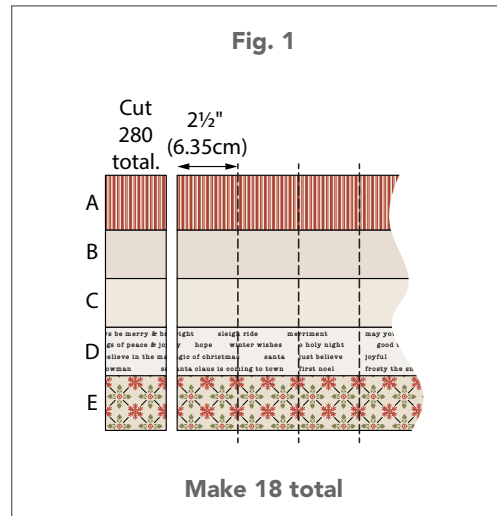
- (1) 18" (45.72cm) snowflake
- (2) 9" (22.86cm) snowflakes

Sewing

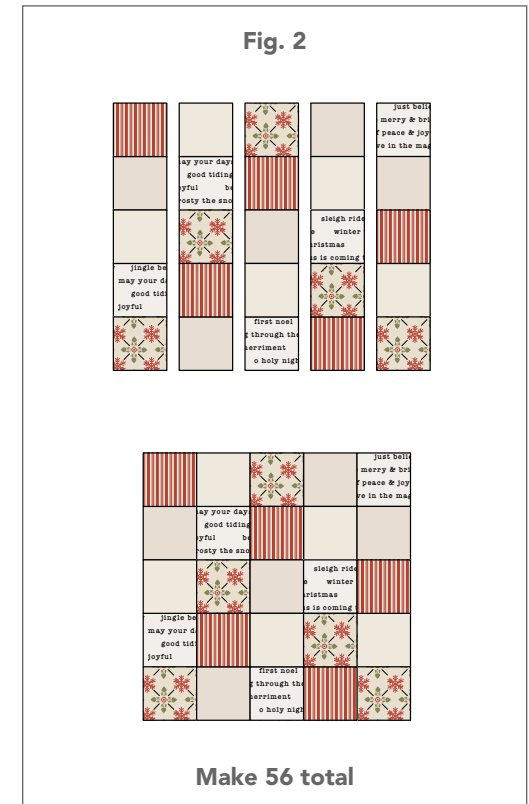
All seams are ¼" (.64cm). Sew pieces right sides together.

25-Patch Blocks

- Using (1) strip each from **Fabrics A, B, C, D, and E**, make a strip set by sewing strips together on long edges in random order. Strip set will measure 10½" x WOF (26.67cm x WOF). Make (18) strip sets total, varying the fabric arrangements (**Fig. 1**).



- Sub-cut strip sets into 2½" (6.35cm) wide pieces. Pieces will measure 2½" x 10½" (6.35cm x 26.67cm). Cut a total of (280) pieces.
- Arrange (5) pieces from Step 2 in a pleasing order to make 25-Patch Block. Sew together and press (**Fig. 2**). Repeat to make (56) total blocks, which should measure 10½" x 10½" (26.67cm x 26.67cm).



Let It Snow

Quilt Top Assembly

4. Following the **Quilt Layout** diagram, arrange 8 rows of 7 blocks each. Sew the blocks together in each row. Press the seam allowances, alternating direction in adjacent rows.
5. Sew the rows together, matching seams, to make the quilt center, which should measure $70\frac{1}{2}" \times 80\frac{1}{2}"$ (179.07cm x 204.47cm). Press.
6. Sew the (8) **Fabric F** strips together end to end to make a continuous strip. Sub-cut (2) $80\frac{1}{2}"$ (204.47cm) pieces and sew to each side of the quilt center. Press.
7. Sub-cut (2) $74\frac{1}{2}"$ (189.23cm) pieces and stitch to the top and bottom of the quilt center. Press.
8. Sew the (8) **Fabric G** strips together end to end to make a continuous strip. Sub-cut (2) $84\frac{1}{2}"$ (214.63cm) pieces and sew to quilt sides. Press.
9. Sub-cut (2) $82\frac{1}{2}"$ (209.55cm) pieces and stitch to the top and bottom of the quilt. Press.

Snowflakes

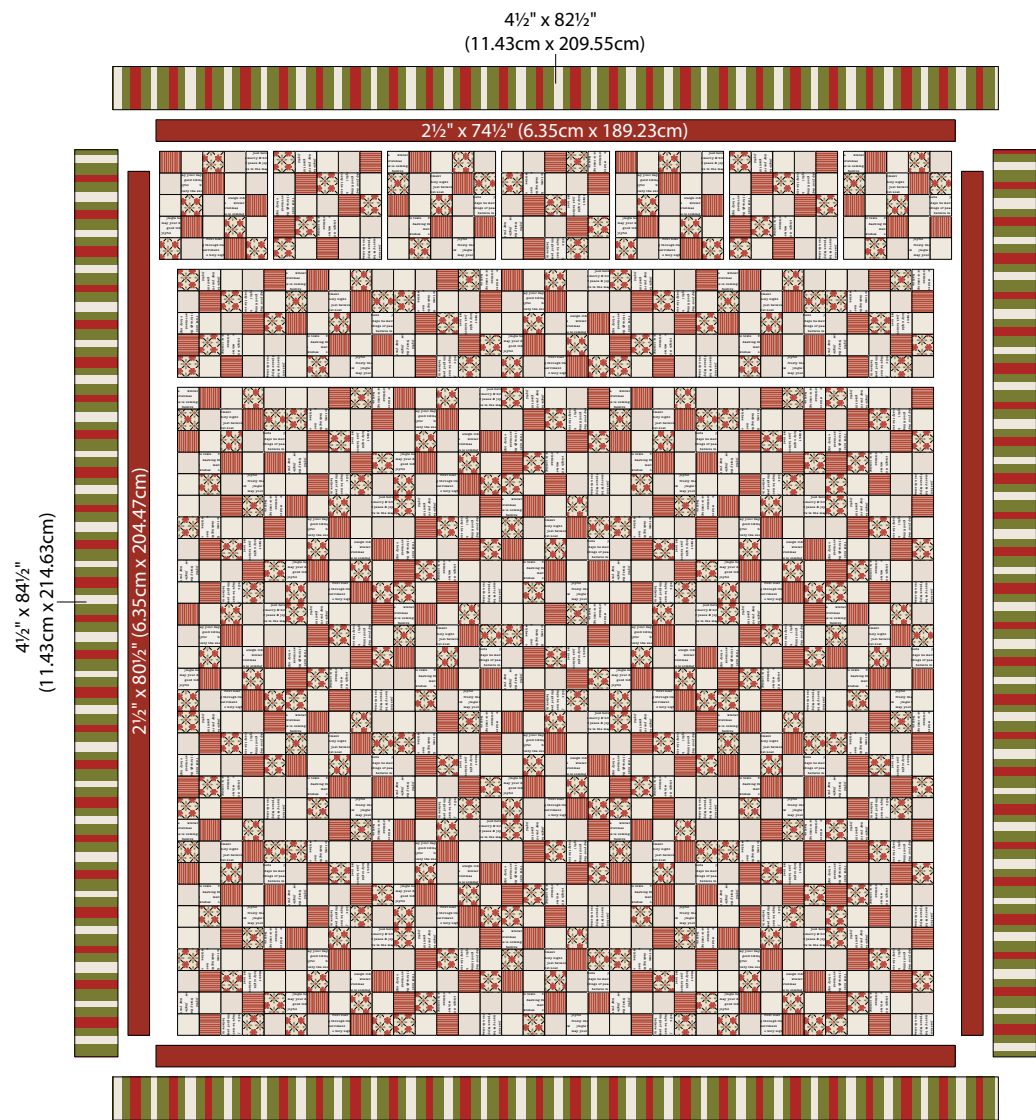
10. Remove the paper backing from the snowflakes and arrange on quilt top, using the **quilt photo** as a guide for placement. Following the manufacturer's instructions, fuse the snowflakes to the quilt top.
11. Using a complementary color thread, edgestitch, zigzag, or decoratively stitch the snowflake edges.

Finishing

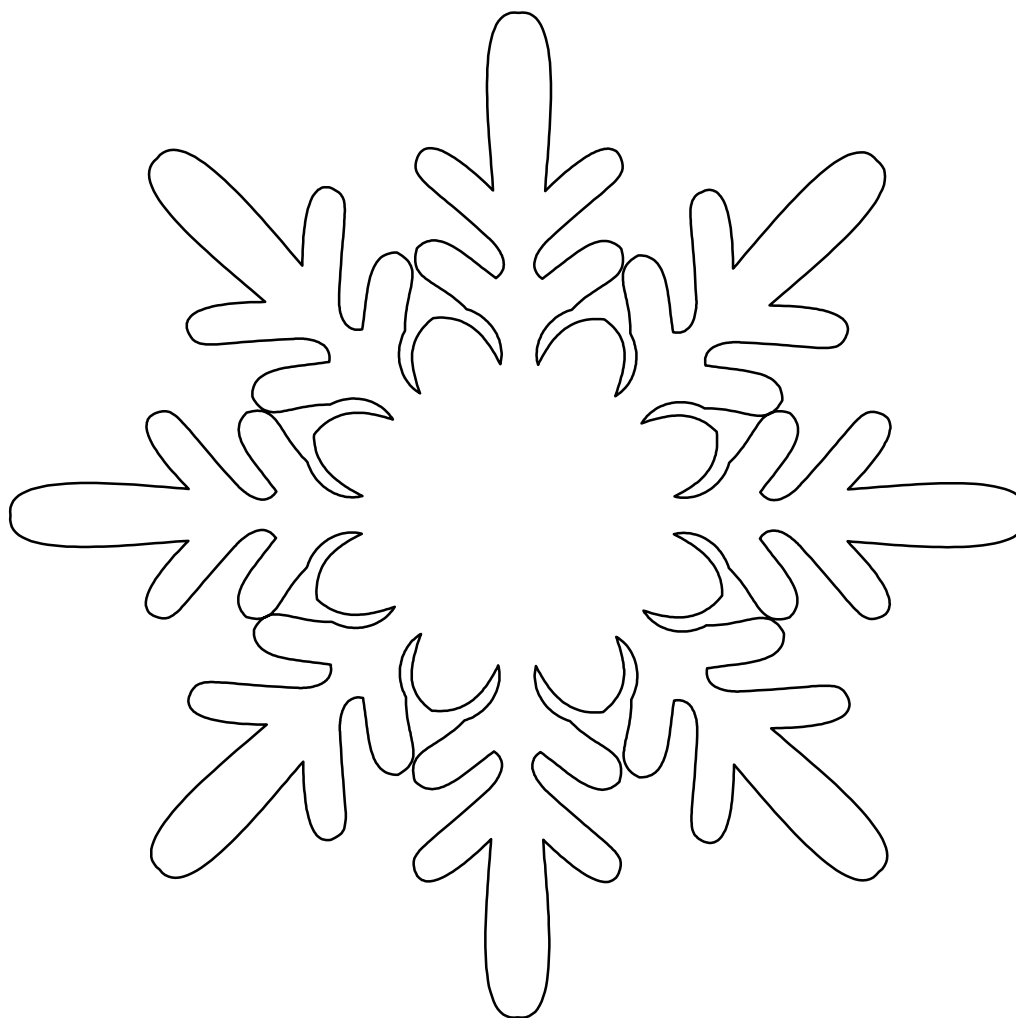
12. Sew together the (9) **Fabric A** binding strips end to end using straight seams. Press the seams open. Press the binding strip in half wrong sides together.
13. Layer the backing (wrong side up), batting, and quilt top (right side up). Baste the layers together and quilt as desired. Trim the excess batting and backing even with the quilt top after quilting is completed.
14. Leaving an 8" (20.22cm) tail of binding, sew binding to top of quilt through all layers matching all raw edges. Miter corners. Stop approximately 12" (30.48cm) from where you started. Lay both loose ends of binding flat along quilt edge. Where these two loose ends meet, fold them back on themselves and press to form a crease. Using this crease as your stitching line, sew the two open ends of the binding right sides together. Trim seam to $\frac{1}{4}"$ (.64cm) and press open. Finish sewing binding to quilt.
15. Turn the binding to the back of the quilt and hand-stitch in place.

Let It Snow

Quilt Layout



Let It Snow



This square should
measure 1" x 1"
(2.54cm x 2.54cm)
when printed.

*** Measure templates before cutting to confirm printing at 100%***